

# GAYLORD COMMUNITY SCHOOLS PROJECT SF3.12

## GHS AUDITORIUM LIGHTING UPGRADES

90 LIVINGSTON BLVD., GAYLORD, MI 49735

### WORK DESCRIPTION

WORK OF THE CONTRACT INCLUDES REPLACEMENT OF EXISTING HOUSE LIGHTING, THEATRICAL LIGHTING, CONTROLS, AND ASSOCIATED ELECTRICAL WORK.

### CODE DATA

APPLICABLE CODES:  
 2021 MICHIGAN BUILDING CODE  
 2021 MICHIGAN REHABILITATION CODE FOR EXISTING BUILDINGS  
 2023 MICHIGAN ELECTRIC CODE AND (NEC BY REFERENCE)  
 2012 LIFE SAFETY CODE

BUILDING USE GROUP:  
 EXISTING E - EDUCATION

CONSTRUCTION TYPE:  
 2021 MBC TYPE IIB  
 NFPA TYPE II(000)

BUILDING PROTECTION:  
 FIRE SPRINKLER SYSTEM THROUGHOUT  
 FIRE ALARM SYSTEM THROUGHOUT

BUILDING AREA:  
 LOWER LEVEL 151,745 sf  
 UPPER LEVEL 61,263 sf

### SHEET INDEX

T TITLE SHEET / PROJECT INFORMATION  
 A0.1 OVERALL FLOOR PLAN - LOWER LEVEL / WALL ASSEMBLY FIRE RATINGS  
 A0.2 OVERALL FLOOR PLAN - UPPER LEVEL / WALL ASSEMBLY FIRE RATINGS  
 ET ELECTRICAL TITLE SHEET  
 E1.1 ELECTRICAL DEMOLITION PLAN - UNIT C  
 E1.2 ELECTRICAL DEMOLITION PLAN - UNIT K  
 E2.1 ELECTRICAL NEW WORK PLAN - UNIT C  
 E2.2 ELECTRICAL NEW WORK PLAN - UNIT K  
 E2.3 ELECTRICAL STAGE LIGHTING NEW WORK PLAN - UNIT K  
 E3.1 ELECTRICAL DETAILS  
 E3.2 ELECTRICAL DETAILS

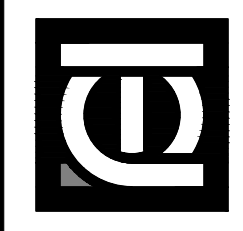
SHEET  
**T**

DATE  
APRIL 30, 2026

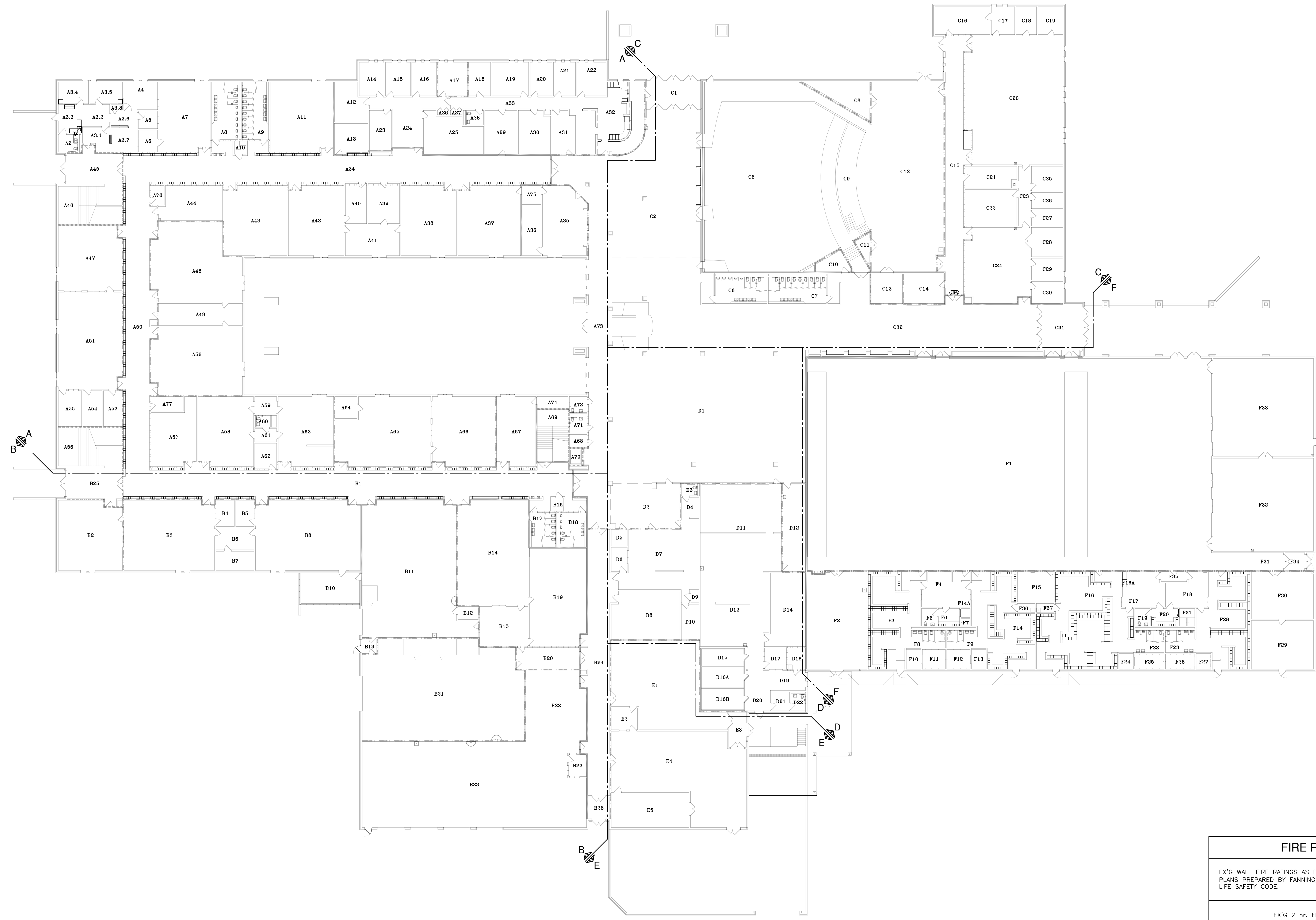
PROJECT NO.  
284-20M

PROJECT TITLE  
GAYLORD COMMUNITY SCHOOLS - SINKGIN FUND PROJECT SF3.12  
GHS AUDITORIUM LIGHTING UPGRADES  
GAYLORD, MICHIGAN

DRAWING TITLE  
TITLE SHEET  
PROJECT INFORMATION

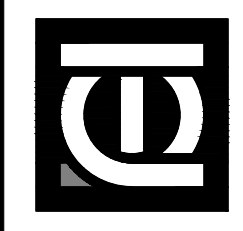


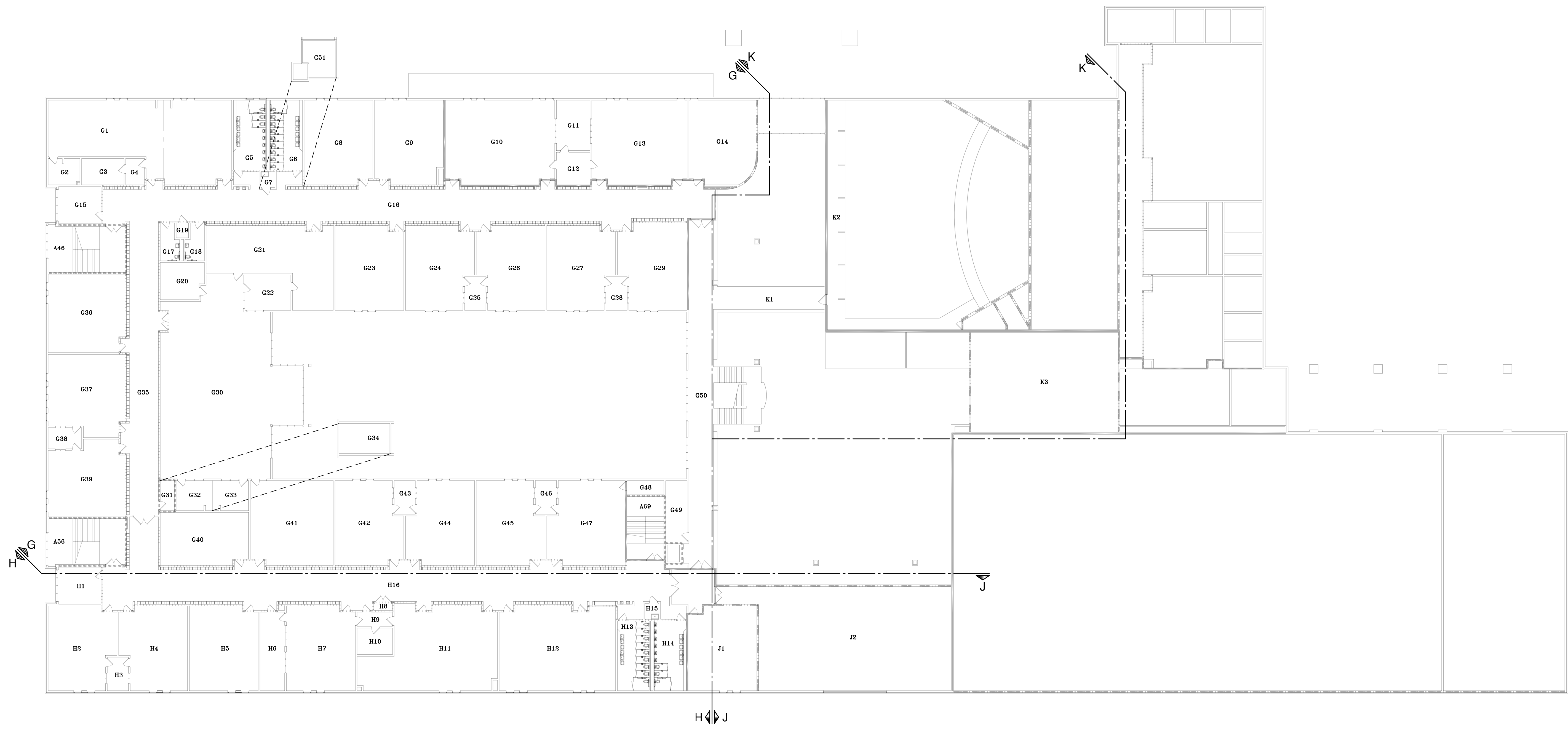
ANTHONY P. ESSON  
ARCHITECT  
PO BOX 479  
GAYLORD, MICHIGAN  
TELEPHONE: (989) 732-0585



**OVERALL FLOOR PLAN - LOWER LEVEL**  
 SCALE: 1" = 20'-0"

FIRE RATING LEGEND	
EX'G WALL FIRE RATINGS AS DESIGNATED ON ORIGINAL CONSTRUCTION PLANS PREPARED BY FANNING/HOWEY ASSOCIATES, INC. BASED ON 1985 LIFE SAFETY CODE.	
	EX'G 2 hr. FIRE RATED SEPARATION WALL/SMOKE BARRIER w/ 90 MIN. "B" LABEL DOOR, FRAME, AND COMBINATION FIRE/SMOKE DAMPERS
	EX'G 1 hr. FIRE RATED FIRE/SMOKE BARRIER w/ 60 MIN. "B" LABEL DOOR, FRAME, AND SMOKE DAMPER ONLY
	EX'G 1 hr. FIRE RATED FIRE/SMOKE BARRIER w/ 45 MIN. DOOR, WIGORE GLASS, FRAME, AND SMOKE DAMPERS
	EX'G 1/2 hr. FIRE RATED FIRE BARRIER 1 3/4" SOLID BOND WOOD CORE DOORS (DAMPERS AND CLOSERS NOT REQUIRED)
	EX'G SMOKE BARRIER - EXTEND TO UNDERSIDE OF ROOF OR FLOOR DECK ABOVE





**OVERALL FLOOR PLAN - UPPER LEVEL**  
 SCALE: 1" = 20'-0"

**ROOM LEGEND - UNIT A**

- A2 TOILET
- A3.1 MEETING
- A3.2 W/./HT.
- A3.3 LAB
- A4 EXAM 1
- A5 EXAM 2
- A6 RECEPTION
- A7 RECEPTION
- A8 OFFICE
- A9 OFFICE
- A10 OFFICE
- A11 OFFICE
- A12 OFFICE
- A13 OFFICE
- A14 OFFICE
- A15 OFFICE
- A16 OFFICE
- A17 OFFICE
- A18 OFFICE
- A19 OFFICE
- A20 OFFICE
- A21 OFFICE
- A22 OFFICE
- A23 OFFICE
- A24 OFFICE
- A25 OFFICE
- A26 OFFICE
- A27 OFFICE
- A28 OFFICE
- A29 OFFICE
- A30 OFFICE
- A31 OFFICE
- A32 OFFICE
- A33 OFFICE
- A34 OFFICE
- A35 OFFICE
- A36 OFFICE
- A37 OFFICE
- A38 OFFICE
- A39 OFFICE
- A40 OFFICE
- A41 OFFICE
- A42 OFFICE
- A43 OFFICE
- A44 OFFICE
- A45 OFFICE
- A46 OFFICE
- A47 OFFICE
- A48 OFFICE
- A49 OFFICE
- A50 OFFICE
- A51 OFFICE
- A52 OFFICE
- A53 OFFICE
- A54 OFFICE
- A55 OFFICE
- A56 OFFICE
- A57 OFFICE
- A58 OFFICE
- A59 OFFICE
- A60 OFFICE
- A61 OFFICE
- A62 OFFICE
- A63 OFFICE
- A64 OFFICE
- A65 OFFICE
- A66 OFFICE
- A67 OFFICE
- A68 OFFICE
- A69 OFFICE
- A70 OFFICE
- A71 OFFICE
- A72 OFFICE
- A73 OFFICE
- A74 OFFICE
- A75 OFFICE
- A76 OFFICE
- A77 OFFICE

**ROOM LEGEND - UNIT B**

- B1 CORRIDOR
- B2 CLASSROOM
- B3 CHEMISTRY
- B4 PREPARED
- B5 PROJECTS
- B6 PREPARATION
- B7 STORAGE
- B8 BIODIVERSITY
- B9 BIOLOGY LABORATORY
- B10 GREENHOUSE
- B11 AGRICULTURE/NATURAL RESOURCES
- B12 STORAGE
- B13 VESTIBULE
- B14 DRAFTING AND DESIGN
- B15 CLASSROOM
- B16 MEN'S TOILET
- B17 WOMEN'S TOILET
- B18 MEN'S TOILET
- B19 WOMEN'S TOILET
- B20 INDUSTRIAL TECHNOLOGY
- B21 CONSTRUCTION TRADES
- B22 TRANSFORMATION SERVICES TECHNOLOGY
- B23 CORRIDOR
- B24 VESTIBULE
- B25 VESTIBULE
- B26 VESTIBULE

**ROOM LEGEND - UNIT C**

- C1 VESTIBULE
- C2 CORRIDOR
- C3 CORRIDOR
- C4 CORRIDOR
- C5 CORRIDOR
- C6 CORRIDOR
- C7 CORRIDOR
- C8 CORRIDOR
- C9 CORRIDOR
- C10 CORRIDOR
- C11 CORRIDOR
- C12 CORRIDOR
- C13 CORRIDOR
- C14 CORRIDOR
- C15 CORRIDOR
- C16 CORRIDOR
- C17 CORRIDOR
- C18 CORRIDOR
- C19 CORRIDOR
- C20 CORRIDOR
- C21 CORRIDOR
- C22 CORRIDOR
- C23 CORRIDOR
- C24 CORRIDOR
- C25 CORRIDOR
- C26 CORRIDOR
- C27 CORRIDOR
- C28 CORRIDOR
- C29 CORRIDOR
- C30 CORRIDOR
- C31 CORRIDOR
- C32 CORRIDOR
- C33 CORRIDOR

**ROOM LEGEND - UNIT D**

- D1 DINING ROOM
- D2 CLASSROOM
- D3 TOILET
- D4 LOCKERS
- D5 STORAGE
- D6 LOCKERS
- D7 LOCKING KITCHEN
- D8 JANITOR
- D9 JANITOR
- D10 STORAGE
- D11 SUEDE AREA
- D12 WAREWASHING
- D13 KITCHEN
- D14 DRY FOOD STORAGE
- D15 KITCHEN
- D16 FREEZER
- D17 FREEZER
- D18 LAUNDRY/JANITOR
- D19 BREAK ROOM
- D20 RECEIVING
- D21 BREAK ROOM
- D22 TOILET

**ROOM LEGEND - UNIT E**

- E1 BUILDING MAINTENANCE AND STORAGE
- E2 OFFICE
- E3 VESTIBULE
- E4 MECHANICAL
- E5 ELECTRICAL

**ROOM LEGEND - UNIT F**

- F1 GYMNASIUM
- F2 PHYSICAL EDUCATION STORAGE
- F3 ORL'S PHYSICAL EDUCATION LOCKER ROOM
- F4 OFFICE
- F5 TOILET
- F6 LOCKERS
- F7 SHOWER/DRYING
- F8 ORL'S PHYSICAL EDUCATION TOILET
- F9 ORL'S ATHLETIC TOILET
- F10 ORL'S PHYSICAL EDUCATION DRYING
- F11 ORL'S PHYSICAL EDUCATION SHOWERS
- F12 ORL'S ATHLETIC SHOWERS
- F13 ORL'S ATHLETIC DRYING ROOM
- F14 ORL'S ATHLETIC LOCKER ROOM
- F15 PRIVATE CHANGING
- F16 TRAINING ROOM
- F17 ORL'S ATHLETIC LOCKER ROOM
- F18 PRIVATE CHANGING
- F19 OFFICE
- F20 LOCKERS
- F21 SHOWER/DRYING
- F22 ORL'S ATHLETIC TOILET
- F23 ORL'S PHYSICAL EDUCATION TOILET
- F24 ORL'S ATHLETIC DRYING ROOM
- F25 ORL'S ATHLETIC SHOWERS
- F26 ORL'S PHYSICAL EDUCATION DRYING
- F27 ORL'S PHYSICAL EDUCATION LOCKER ROOM
- F28 FOOTBALL STORAGE
- F29 ATHLETIC STORAGE
- F30 OFFICE
- F31 NIGHT TRAINING
- F32 VESTIBULE
- F33 WESTBLIND
- F34 VESTIBULE
- F35 JANITOR
- F36 JANITOR
- F37 JANITOR

**ROOM LEGEND - UNIT G**

- G1 HEALTH OCCUPATIONS
- G2 HEALTH OCCUPATIONS LOCKERS
- G3 STORAGE
- G4 OFFICE
- G5 MEN'S TOILET
- G6 WOMEN'S TOILET
- G7 JANITOR
- G8 ENGLISH OFFICE
- G9 BUSINESS TECHNOLOGY
- G10 OFFICE
- G11 COMPUTER ROOM
- G12 ACCOUNTING
- G13 ACCOUNTING
- G14 OFFICE
- G15 OFFICE
- G16 OFFICE
- G17 TOILET
- G18 ELECTRICAL CLOSET
- G19 PERIODICALS
- G20 AUDIO VISUAL STORAGE
- G21 OFFICE/WORK ROOM
- G22 SUSPENSION
- G23 CLASSROOM
- G24 CLASSROOM
- G25 CLASSROOM
- G26 CLASSROOM
- G27 CLASSROOM
- G28 TESTING
- G29 CLASSROOM
- G30 READING/CIRCULATION
- G31 MECHANICAL ACCESS
- G32 CONFERENCE
- G33 CONFERENCE
- G34 CONFERENCE
- G35 MECHANICAL MEZZANINE
- G36 CORRIDOR
- G37 CLASSROOM
- G38 TESTING
- G39 CLASSROOM
- G40 SOCIAL STUDIES OFFICE/STORAGE
- G41 COMPUTER LAB
- G42 CLASSROOM
- G43 CLASSROOM
- G44 CLASSROOM
- G45 CLASSROOM
- G46 TESTING
- G47 CLASSROOM
- G48 ELECTRICAL
- G49 STORAGE
- G50 CORRIDOR
- G51 MECHANICAL MEZZANINE

**ROOM LEGEND - UNIT H**

- H1 CONFERENCE
- H2 CLASSROOM
- H3 TESTING
- H4 CLASSROOM
- H5 CLASSROOM
- H6 JOURNAL
- H7 CLASSROOM
- H8 ELECTRICAL CLOSET
- H9 VESTIBULE
- H10 DARKROOM
- H11 VISUAL IMAGING
- H12 ART
- H13 WOMEN'S TOILET
- H14 MEN'S TOILET
- H15 JANITOR
- H16 CORRIDOR

**ROOM LEGEND - UNIT J**

- J1 CLASSROOM
- J2 MECHANICAL ROOM

**ROOM LEGEND - UNIT K**

- K1 BRIDGE
- K2 SOUND AND LIGHT CONTROL MEZZANINE
- K3 MECHANICAL ROOM

FIRE RATING LEGEND	
	EX'G 2 hr. FIRE RATED SEPARATION WALL/SMOKE BARRIER w/ 90 MIN. "B" LABEL DOOR, FRAME, AND COMBINATION FIRE/SMOKE DAMPERS
	EX'G 1 hr. FIRE RATED FIRE/SMOKE BARRIER w/ 60 MIN. "B" LABEL DOOR, FRAME, AND SMOKE DAMPER ONLY
	EX'G 1 hr. FIRE RATED FIRE/SMOKE BARRIER w/ 45 MIN. DOOR, WIRE GLASS, FRAME, AND SMOKE DAMPERS
	EX'G 1/2 hr. FIRE RATED FIRE BARRIER 1 3/4" SOLID BOND WOOD CORE DOORS (DAMPERS AND CLOSERS NOT REQUIRED)
	EX'G SMOKE BARRIER - EXTEND TO UNDERSIDE OF ROOF OR FLOOR DECK ABOVE

**GENERAL ELECTRICAL DEMOLITION NOTES:**

- THESE DRAWINGS ARE DIAGRAMMATIC AND INDICATE THE GENERAL EXTENT OF THE WORK. THE EXTENT OF DEMOLITION WORK SHALL BE AS REQUIRED BY THE NEW WORK.
- THIS ELECTRICAL/HOUSE&STAGE LIGHTING WORK IS DIVIDED INTO BID CATEGORIES.
  - BID CATEGORY #16: INCLUDES ALL DIVISION 260000 – ELECTRICAL SPECIFICATIONS WORK, OTHER THAN BID CATEGORY #16.3 – THEATRICAL STAGE LIGHTING/CONTROLS WORK, SHALL BE COMPLETED BY THE ELECTRICAL CONTRACTOR (E.C.) INCLUDING DEMOLITION & NEW WORK FOR STAGE LIGHTING POWER & BOX/CONDUIT ROUGH-INS.
  - BID CATEGORY #16.3: INCLUDES DIVISION 265561 – THEATRICAL STAGE LIGHTING & CONTROLS WORK TO BE COMPLETED BY THE STAGE LIGHTING CONTRACTOR (S.L.C.).
- CONTRACTORS SHALL VISIT THE PROJECT SITE AND FAMILIARIZE THEMSELVES WITH THE EXISTING SYSTEMS/EQUIPMENT PRIOR TO ISSUING THEIR BID. ALL EXISTING PANEL/WIRE/LIGHT SIZES AND ROUTINGS SHOWN ARE APPROXIMATE AND SHOULD BE FIELD VERIFIED BY E.C./S.L.C.
- ALL ELECTRICAL/LIGHTING ITEMS TO BE REMOVED SHALL BE REMOVED COMPLETE WITH ALL RELATED ITEMS INCLUDING, BUT NOT LIMITED TO, WIRES, CONDUITS, SUPPORTS, FIXTURES, LAMPS, ETC...REMOVED ITEMS SHALL BE LEGALLY DISPOSED OFF SITE. E.C. SHALL PATCH ANY FASTENER HOLES REMAINING IN EXPOSED TO VIEW, FINISH SURFACES AFTER CONDUIT REMOVAL WITH PAINTABLE LATEX SEALANT.
- ANY INTERRUPTION OF EXISTING SERVICES AND/OR EQUIPMENT SHALL BE PERFORMED AT A TIME APPROVED, BY THE OWNER OR OWNER'S REPRESENTATIVE, AT LEAST FIVE (5) BUSINESS DAYS IN ADVANCE SO AS NOT TO INTERFERE WITH THE PRESENT BUILDING OPERATION.
- WHERE DEMOLITION OF EXISTING SERVICES ARE REQUIRED TO ACCOMMODATE THE PROJECT PHASING/SCHEDULING, AND SERVICES ARE TO BE INTERRUPTED IN AREAS THAT ARE REMAINING OCCUPIED, THE CONTRACTOR SHALL PROVIDE TEMPORARY SERVICES/CONNECTIONS TO THE OCCUPIED AREAS TO MAINTAIN ITS PRESENT OPERATION. IF SYSTEM SHUT DOWNS ARE REQUIRED, THE CONTRACTOR SHALL SCHEDULE WORK TO BE PERFORMED AT UNOCCUPIED HOURS.
- ALL ITEMS TO BE REMOVED AND/OR RELOCATED SHALL BE REMOVED AND/OR RELOCATED TOGETHER WITH ALL RELATED ITEMS AS REQUIRED BY THE NEW WORK TO BE PERFORMED.
- CONTRACTORS SHALL COORDINATE ALL REMOVAL AND/OR RELOCATION WITH THE EXTENT OF THE NEW WORK AND WITH ALL OTHER TRADES INVOLVED (SPECIALTY LIGHTING, CONTROLS, OWNER'S IT GROUP, ETC.).
- DEVICE REMOVAL: AT ALL LOCATIONS WHERE (E) DEVICES (E.G. SWITCHES/DIMMERS, RECEPTACLES, ETC.) BEING REMOVED ARE RECESSED CONCEALED IN CONSTRUCTION – INSTALL STAINLESS STEEL BLANK COVER PLATES. AT ALL LOCATIONS WHERE (E) DEVICES/CONDUIT BEING REMOVED ARE SURFACE MOUNTED/EXPOSED, ALL EMPTY BOXES, RACEWAYS, SUPPORTS, ETC...SHALL BE REMOVED IN ACCORDANCE WITH GENERAL DEMOLITION NOTE 4 ABOVE.

**GENERAL ELECTRICAL NEW WORK NOTES:**

- THESE DRAWINGS ARE DIAGRAMMATIC AND INDICATE THE GENERAL EXTENT OF WORK. THE CONTRACTORS SHALL PROVIDE AND INSTALL ALL MATERIALS (E.G. CONDUIT, WIRE, PULL BOXES, FIXTURES, DEVICES, ETC.) REQUIRED FOR A COMPLETE AND FUNCTIONAL SYSTEM.
- THIS ELECTRICAL/HOUSE&STAGE LIGHTING WORK IS DIVIDED INTO BID CATEGORIES.
  - BID CATEGORY #16: INCLUDES ALL DIVISION 260000 – ELECTRICAL SPECIFICATIONS WORK, OTHER THAN BID CATEGORY #16.3 – THEATRICAL STAGE LIGHTING/CONTROLS WORK, SHALL BE COMPLETED BY THE ELECTRICAL CONTRACTOR (E.C.) INCLUDING DEMOLITION & NEW WORK FOR STAGE LIGHTING POWER & BOX/CONDUIT ROUGH-INS.
  - BID CATEGORY #16.3: INCLUDES DIVISION 265561 – THEATRICAL STAGE LIGHTING & CONTROLS WORK TO BE COMPLETED BY THE STAGE LIGHTING CONTRACTOR (S.L.C.). NOTE THAT ALL DIVISION 265561-STAGE LIGHTING CONTRACTOR (S.L.C.) WORK SHALL ADHERE TO SPECIFICATION 265561 REQUIREMENTS, AS WELL AS ALL DIVISION 26 SPECIFICATION REQUIREMENTS, FOR ELECTRICAL INSTALLATION WORK OF THE STAGE LIGHTING EQUIPMENT/CONTROLS.
  - NOTE THAT ANY SPEC. DIVISION 27 CABLING WORK FOR ANY NEW IT-NETWORK/ETHERNET CABLING WILL BE COMPLETED BY OWNER'S CABLING SUBCONTRACTOR. E.C. & S.L.C. SHALL COORDINATE/PROVIDE ANY BOX/CONDUIT ROUGH-INS NEEDED WITH OWNER'S IT DEPARTMENT PRIOR TO ROUGH-IN.
- ALL ELECTRICAL/LIGHTING SYSTEMS SHALL BE PROVIDED/INSTALLED TO MEET THEN CURRENT APPLICABLE BUILDING CODES: MICHIGAN BUILDING CODE, MICHIGAN ELECTRICAL CODE, N.E.C., ETC.
- VERIFY REQUIREMENTS OF ALL STAGE LIGHTING EQUIPMENT/ARCHITECTURAL EQUIPMENT WITH EQUIPMENT SHOP DRAWING SUBMITTALS PRIOR TO INSTALLATION. NOTIFY THE ARCHITECT/ENGINEER OF ANY CONFLICTS BETWEEN SHOP DRAWINGS AND PLANS.
- COORDINATE LOCATIONS AND MOUNTING HEIGHTS OF ALL RECEPTACLES, DUAL PORT CAT.6 OUTLETS, ETC...NEEDED FOR NEW LIGHT FIXTURES WITH LOCATIONS/HEIGHTS OF FURNITURE, CABINETS, SUPPLEMENTARY SUPPORT STEEL, ETC. & ALSO WITH THE S.L.C. FOR EXACT LOCATIONS OF NEW RECEPTACLES/OUTLETS NEEDED FOR NEW STAGE LIGHTING.
- PROVIDE/INSTALL ALL MISCELLANEOUS STEEL, STRUT, HANGERS, ETC. REQUIRED TO SUPPORT/HANG ELEC. EQUIPMENT, FIXTURES, CONDUIT, BOXES, ETC. NOTE WHERE HANGING EQUIPMENT/FIXTURES FROM STEEL JOISTS – ATTACH STRUT TO TOP CHORD OR BOTTOM CHORD AT PANEL POINTS OF JOIST, OR PROVIDE SUPPLEMENTAL WEB FRAMING IN ACCORDANCE WITH JOIST MANUFACTURERS RECOMMENDATIONS.
- COORDINATE THE INSTALLATION OF ALL ELECTRICAL/LIGHTING WORK WITH ALL OTHER TRADES. CONTRACTOR SHALL VERIFY ALL ELECTRICAL CLEARANCES PRIOR TO FABRICATION OF ANY NEW WORK. ELECTRICAL EQUIPMENT, WIRING, ETC. SHALL NOT INTERFERE WITH OTHER EQUIPMENT CLEARANCE SPACES.
- ALL NEW CIRCUITS FOR NEW POWER, NEW LIGHTING, NEW CONTROLS, ETC. SHALL BE INSTALLED IN CONDUIT AS SPECIFIED. ALL CIRCUITS SHALL BE CONCEALED/FISHED WITHIN WALLS, INCLUDING (E) WALLS. SURFACE MOUNTED RACEWAY (CONDUIT PER SPECS) MAY BE USED WHERE WALLS CANNOT BE FISHED & APPROVAL FROM ARCHITECT/OWNER MUST BE OBTAINED PRIOR TO USING SURFACE MOUNTED CONDUIT.
- EACH SUBCONTRACTOR SHALL BE RESPONSIBLE FOR SEALING ALL NEW PENETRATIONS THROUGH ALL WALLS WITH FIRE CAULK IN ACCORDANCE WITH CURRENT BUILDING CODE REQUIREMENTS. NOTE THAT ALL CORRIDOR WALLS AND WALLS FOR ROOMS C10/C11 ARE 2-HR FIRE RATED.
- COORDINATE EXACT STAGE FIXTURE LOCATIONS WITH SPECIALTY STAGE LIGHTING CONSULTANT.
- ELECTRICAL CONTRACTOR (E.C.) SHALL PROVIDE ALL ROUGH-INS (E.G. BOXES, CONDUIT, ETC.) FOR ALL AUXILIARY ELECTRICAL SYSTEMS (I.E. STAGE & HOUSE LIGHTING CONTROLS, NEW TELECOM/NETWORK, ETC.). COORDINATE REQUIREMENTS WITH AUXILIARY ELECTRICAL SUB-CONTRACTORS & OWNER'S IT GROUP PRIOR TO ISSUE OF BID AND VERIFY ALL WORK REQUIRED PRIOR TO ROUGH-IN. ALL CONDUIT ROUGH-INS SHALL TERMINATE AT ACCESSIBLE LOCATIONS (I.E. ABOVE LAY-IN CEILINGS, UP IN JOIST SPACE, AT IT CLOSETS, AT LIGHTING CONTROL CLOSETS/ROOMS, ETC.). NOTE: CONDUIT INSTALLED WITHIN JOIST SPACE IN EXPOSED LOCATIONS SHALL BE INSTALLED ALONG TOP CHORD OF JOIST.
- IDENTIFY CIRCUIT #S (E.G. "CS-14") AT ALL WIRING DEVICES (E.G. RECEPTACLES, SWITCHES, DIMMERS, ETC.) WITH A SELF-ADHESIVE LABEL STUCK TO THE FRONT OF THE DEVICE COVER PLATE.

**ELECTRICAL ABBREVIATION LIST**

ABBREVIATION	DESCRIPTION
A	AMPS
AFF	ABOVE FINISHED FLOOR
AFG	ABOVE FINISHED GRADE
AIC	AMPS INTERRUPTING CAPACITY
BKR	BREAKER
C	CONDUIT
CB	CIRCUIT BREAKER
CKT	CIRCUIT
COORD	COORDINATE
DISC	DISCONNECT
DP	DISTRIBUTION PANEL
DWG	DRAWING
(E)	EXISTING
E.C.	ELECTRICAL CONTRACTOR
EF	EXHAUST FAN
EML	EMERGENCY LIGHT
EMT	ELECTRICAL METALLIC TUBING
(F)	FUTURE
FLA	FULL LOAD AMPS
FU	FUSE
GFI	GROUND FAULT INTERRUPTER
GBB	GROUND BUSS BAR
GRD	GROUND
GRS	GALVANIZED RIGID STEEL
HP	HORSEPOWER
HZ	HERTZ
I.D.	ISOLATED GROUND
JB	JUNCTION BOX
KVA	KILO VOLT-AMPERES
KW	KILOWATT
KWH	KILOWATT-HOURS
LC	LIGHTING CONTROLLER
MCA	MINIMUM CIRCUIT AMPS
MCB	MAIN CIRCUIT BREAKER
MDP	MAIN DISTRIBUTION PANEL
MFS	MAX FUSE SIZE
MLO	MAIN LUGS ONLY
MTD	MOUNTED
NC	NORMALLY CLOSED
N.E.C.	NATIONAL ELECTRIC CODE
NF	NON-FUSIBLE
NI	NOT IN CONTRACT
NO	NORMALLY OPEN
NTS	NOT TO SCALE
P-A	PANEL "A"
PB	PUSHBUTTON STATION
PRI	PRIOR TO ROUGH-IN
(R)	RELOCATED
RECEPT	RECEPTACLE
SPEC	SPECIFICATION
SS	STAINLESS STEEL
S.L.C.	STAGE LIGHTING CONTRACTOR
SW	SWITCH
SWBD	SWITCHBOARD
T-CL	TRANSFORMER "CL"
TELECOM	TELECOMMUNICATIONS
TYP	TYPICAL
UON	UNLESS OTHERWISE NOTED
V	VOLTS
W	WATTS
WG	WIRE GUARD

**GAYLORD HIGH SCHOOL AUDITORIUM LIGHTING UPGRADE PROJECT DESCRIPTION & GENERAL SCOPES OF WORK FOR BID CATEGORY #16 = DIVISION 260000 ELECTRICAL CONTRACTOR (E.C.) & BID CATEGORY #16.3 = SPECIFICATION 265561 STAGE LIGHTING CONTRACTOR (S.L.C.)**

- AUDITORIUM HOUSE LIGHTING IMPROVEMENTS – NOTE THAT ALL HOUSE LIGHTING IMPROVEMENT WORK WILL BE PROVIDED & INSTALLED BY THIS ELECTRICAL CONTRACTOR (E.C.) INCLUDING, BUT NOT LIMITED TO:
  - REMOVE (31)-OLD PENDANTS (500W QUARTZ), PROVIDE/INSTALL (31)-NEW LED PENDANTS IN SAME LOCATION & RECONNECT TO EXISTING CIRCUITS.
  - REMOVE OLD HOUSE DIMMER (IN C11) & PROVIDE/INSTALL NEW HOUSE DIMMER RACK (HD-N) IN SAME LOCATION, RECONNECT EXISTING CIRCUITS.
  - REMOVE & REPLACE HOUSE LIGHTING CONTROLS, CONTROL STATIONS, CONTROL WIRING, ETC...TO PROVIDE A FULLY FUNCTIONAL HOUSE LIGHTING SYSTEM.
  - THE HOUSE LIGHTING EQUIPMENT SUPPLIER, AND THE S.L.C., SHALL PROVIDE ASSISTANCE TO E.C. FOR ON THE JOB-SITE STARTUP, COMMISSIONING, & OWNER TRAINING OF THE NEW HOUSE LIGHTING FIXTURES, CONTROLS, ETC.
- AUDITORIUM STAGE LIGHTING IMPROVEMENTS – NOTE THAT ALL NEW STAGE LIGHTING IMPROVEMENT WORK WILL BE PROVIDED & INSTALLED BY THE STAGE LIGHTING CONTRACTOR (S.L.C.) IN ACCORDANCE WITH SPECIFICATION SECTION 265561 – STAGE LIGHTING EQUIPMENT AND CONTROLS (INCLUDING BUT NOT NECESSARILY LIMITED TO: NEW STAGE LIGHTING CONTROL CONSOLE; 4 ROWS OF NEW STAGE LIGHT FIXTURES; STAGE LIGHTING DMX DISTRIBUTION; SOFT DMX CONTROL & POWER CABLING FOR THE STAGE LIGHTS) EXCEPT FOR THE FOLLOWING WORK TO BE PERFORMED BY THE ELECTRICAL CONTRACTOR (E.C.):
  - ELECTRICAL CONTRACTOR (E.C.) WORK:
    - E.C. SHALL PROVIDE DEMO OF EXISTING STAGE LIGHTING DIMMER RACK & ALL POWER CIRCUITS/CONTROLS/ETC. FROM OLD STAGE LIGHTING DIMMER RACK OUT TO ALL THE OLD STAGE LIGHTS BEING REMOVED/REPLACED BY S.L.C. DISCONNECT 200A FEEDER & RECONNECT TO NEW SUB-PANEL CS (BY E.C.).
    - E.C. SHALL PROVIDE NEW POWER FOR NEW STAGE LIGHTING VIA NEW PANEL P-CS & NEW RECEPTACLES/CIRCUITS FOR NEW STAGE LIGHT FIXTURES (BY S.L.C.). E.C. SHALL READ SPEC. SECTION 265561 TO FAMILIARIZE THEMSELVES WITH S.L.C.'S SCOPE OF WORK AND E.C.'S SCOPE OF WORK FOR THE STAGE LIGHTING FIXTURES POWER & CONTROLS.
    - ALTHOUGH ALL NEW STAGE LIGHT FIXTURES & CONTROLS SHALL BE PROVIDED & INSTALLED BY THE STAGE LIGHTING CONTRACTOR (S.L.C.) IN ACCORDANCE WITH SPECIFICATION SECTION 265561 – STAGE LIGHTING EQUIPMENT AND CONTROLS, NOTE THAT E.C. SHALL PROVIDE ALL BOX/CONDUIT ROUGH-INS FOR THE S.L.C. AND SHALL COORDINATE LOCATIONS/OTYS/SIZES WITH THE S.L.C. AND ALSO THE OWNER'S STAGE LIGHTING CONSULTANT (NICK REICHERT @ 989-619-1350 & NICK.R.REICHERT@GMAIL.COM) FOR EXACT LOCATIONS OF POWER RECEPTS. & ETHERNET PORTS FOR ALL THE NEW STAGE LIGHTING FIXTURES/CONTROLS.
  - THE STAGE LIGHTING EQUIPMENT SUPPLIER, AND THE S.L.C., SHALL PROVIDE ASSISTANCE TO OWNER FOR ON THE JOB-SITE STARTUP, COMMISSIONING, & OWNER TRAINING OF THE NEW STAGE LIGHTING FIXTURES/CONTROLS & THE NEW HOUSE LIGHTING FIXTURES/CONTROLS FOR A FULLY FUNCTIONING HOUSE/STAGE LIGHTING SYSTEM.
- ROUGH-IN OF BOXES & CONDUIT BY E.C. FOR CONTROL/NETWORK CABLING OTHERS (S.L.C. OR OWNER'S NETWORK CABLE SUB) –
  - ELECTRICAL CONTRACTOR (E.C.) SHALL PROVIDE/INSTALL ALL BOX & CONDUIT ROUGH-INS FOR:
    - ALL NEW HOUSE LIGHTING CONTROLS, TO BE PROVIDED/INSTALLED BY E.C.
    - ALL NEW STAGE LIGHTING CONTROLS, TO BE PROVIDED/INSTALLED BY S.L.C., COORDINATE/CONFIRM WITH OWNER'S STAGE LIGHTING CONSULTANT (NICK REICHERT @ 989-619-1350 & NICK.R.REICHERT@GMAIL.COM) PRIOR TO ROUGH-IN.
    - ALL NEW NETWORK ETHERNET CABLING, TO BE PULLED BY OWNER'S DIRECT HIRE NETWORK CABLE SUBCONTRACTOR. COORDINATE REQUIREMENTS WITH OWNER'S IT DEPARTMENT (TODD OOSTMEYER @ 989-705-3032, OOSTMEYERT@GAYLORD.K12.MI.US) PRIOR TO ROUGH-IN.

**BRANCH CIRCUIT WIRE SIZE/LENGTH SCHEDULE**

MAX BRANCH CIRCUIT (AMPS)	MAX CIRCUIT LENGTH (FEET) TO LAST CONNECTION IN THE CIRCUIT					
	50	75	100	125	150	300
15	#12	#10	#10	#8	#6	#4
20	#10	#10	#8	#6	#6	#3
30	#8	#8	#6	#4	#4	#1

- NOTES:  
 1. REFER TO SPECIFICATIONS FOR WIRE TYPE.  
 2. SCHEDULE IS BASED UPON A MAX 3% VOLTAGE DROP ON 115-120V/1Ø CIRCUITS.  
 3. FOR LENGTHS BETWEEN TABLED VALUES – USE LONGER LENGTH.

**BRANCH CIRCUIT WIRE SIZE/LENGTH SCHEDULE**

MAX BRANCH CIRCUIT (AMPS)	MAX CIRCUIT LENGTH (FEET) TO LAST CONNECTION IN THE CIRCUIT						
	50	75	100	125	150	< 300	< 500
15	#10	#10	#10	#10	#8	#4	#3
20	#10	#10	#8	#8	#6	#4	#2
30	#8	#8	#6	#6	#4	#2	#1/0

- NOTES:  
 1. REFER TO SPECIFICATIONS FOR WIRE TYPE.  
 2. SCHEDULE IS BASED UPON A MAX 3% VOLTAGE DROP ON 208-240V/1Ø CIRCUITS.  
 3. FOR LENGTHS BETWEEN TABLED VALUES – USE LONGER LENGTH.

**ELECTRICAL SYMBOL LIST**

SYMBOL	DESCRIPTION
⊕	JUNCTION BOX
—○—	CONDUIT UP
—○—	CONDUIT DOWN
◀	COMBINATION TELE/DATA OUTLET – ROUGH-IN ONLY, NO CABLE DROP
◀	COMBINATION TELE/DATA OUTLET – 2 CABLE DROPS
◀	COMBINATION TELE/DATA OUTLET – 4 CABLE DROPS
◀	COMBINATION TELE/DATA OUTLET MOUNTED 6" ABOVE COUNTERTOP – ROUGH-IN ONLY NO CABLE DROPS
◀	COMBINATION TELE/DATA OUTLET MOUNTED 6" ABOVE COUNTERTOP – 2 CABLE DROPS
⊕	DUPLEX RECEPTACLE
⊕ 48"	DUPLEX RECEPTACLE MOUNTED AT 48" ABOVE FLOOR (UNLESS NOTED OTHERWISE) – SIMILAR FOR ISOLATED GROUND, EMERGENCY AND GFI RECEPTACLES
⊕	QUAD RECEPTACLE
⊕	DUPLEX RECEPTACLE EMERGENCY POWER
⊕	DUPLEX RECEPTACLE – GROUND FAULT INTERRUPTER
⊕	DUPLEX RECEPTACLE – GROUND FAULT INTERRUPTER – MOUNTED 6" ABOVE COUNTERTOP OR AS REQUIRED TO ACCOMMODATE COUNTERS – REFER TO ARCHITECTURAL ELEVATIONS
⊕	DUPLEX RECEPTACLE ISOLATED GROUND
⊕	QUAD RECEPTACLE ISOLATED GROUND
⊕	SPECIAL RECEPTACLE – NEMA CONFIGURATION AS NOTED
⊕ DMX	DMX NODE – DMX KING 4-PORT DMX NODE (PORTABLE OR PIPE MOUNT W/ CLAMPS)
S	SINGLE POLE TOGGLE SWITCH
S2	TWO POLE TOGGLE SWITCH
S3	3-WAY TOGGLE SWITCH
S4	4-WAY TOGGLE SWITCH

SYMBOL	DESCRIPTION
⊕	CIRCUIT BREAKER
⊕	SWITCH
⊕	FUSE
⊕	TRANSFORMER
⊕	GROUND
⊕	TRANSIENT VOLTAGE SURGE SUPPRESSION
⊕	GROUND BUS BAR
A-3	CIRCUIT HOMERUN TO PANEL "A" CIRCUIT #3
⊕	LIGHTING PANEL (LP = <240V)
⊕	POWER PANEL (PP = >480V)
⊕	DISTRIBUTION PANEL
⊕	TRANSFORMER
⊕	UTILITY METER
⊕	SPEAKER – CEILING MOUNTED
⊕	SPEAKER – WALL MOUNTED
⊕	MICROPHONE
⊕	VOLUME CONTROL
⊕	SINGLE PHASE MOTOR
⊕	THREE PHASE MOTOR
⊕	COMBINATION MOTOR STARTER WITH DISCONNECT SWITCH
VSD	VARIABLE SPEED DRIVE COMBINATION MOTOR STARTER WITH DISCONNECT SWITCH
⊕	NON-FUSABLE DISCONNECT SWITCH
⊕	FUSIBLE DISCONNECT SWITCH
⊕	HORSE POWER RATED SWITCH

**STANDARD MOUNTING HEIGHTS**

CONVENIENCE AND SPECIAL PURPOSE RECEPTACLE OUTLETS, TELE/DATA AND COMMUNICATIONS OUTLETS, NOT OTHERWISE SPECIFIED:  
 • 18" AFF TO THE MIDDLE OF BOX  
 • 16" AFF TO BOTTOM OF BOX IN CMU WALLS

CONVENIENCE AND SPECIAL PURPOSE RECEPTACLE OUTLETS ABOVE COUNTERS, NOT OTHERWISE SPECIFIED:  
 • 6" ABOVE COUNTER TO CENTER OF BOX OR AS REQUIRED TO ACCOMMODATE COUNTERS. (REFER TO ARCHITECTURAL ELEVATIONS.)

LIGHT SWITCHES AND LIGHTING CONTROL DEVICES, NOT OTHERWISE SPECIFIED:  
 • 48" AFF TO THE MIDDLE OF BOX  
 • 48" AFF TO THE TOP OF BOX IN CMU WALLS

LIGHTING AND RECEPTACLE BRANCH CIRCUIT PANELBOARDS AND LIGHTING CONTROLLERS:  
 • 6"-6" AFF TO TOP OF ENCLOSURE.

**METHODS OF NOTATION**

⊕	LIGHT FIXTURE DESIGNATION (I.E. FIXTURE TYPE "FA" – SEE FIXTURE SCHEDULE)
⊕	CONSTRUCTION KEYED NOTE NUMBER
⊕	DEMOLITION KEYED NOTE NUMBER
⊕	EXISTING SYSTEM COMPONENT TO BE REMOVED
⊕	NEW SYSTEM COMPONENT
⊕	EXISTING SYSTEM COMPONENT TO REMAIN
⊕	POINT OF NEW CONNECTION
⊕	CIRCUIT HOMERUN (BACK TO PANEL "CL" – REFER TO PANEL SCHEDULE)

**ELECTRICAL DRAWING INDEX**

- ET ELECTRICAL TITLE SHEET  
 E1.1 ELECTRICAL DEMOLITION PLAN – UNIT C  
 E1.2 ELECTRICAL DEMOLITION PLAN – UNIT K  
 E2.1 ELECTRICAL NEW WORK PLAN – UNIT C  
 E2.2 ELECTRICAL NEW WORK PLAN – UNIT K  
 E2.3 ELECTRICAL STAGE LIGHTING NEW WORK PLAN – UNIT K  
 E3.1 ELECTRICAL DETAILS  
 E3.2 ELECTRICAL DETAILS

JLK Engineering  
 Project Number: AEA 2603-01  
 Mechanical | Electrical | Plumbing  
 5706 Cataract Ct., Gaylord, MI 49735 | P 989.448.4631  
 www.jlkeengineering.com

**ANTHONY P. ESSON**  
 ARCHITECT  
 GAYLORD, MICHIGAN  
 PO BOX 479  
 TELEPHONE: (989) 732-0585

DRAWING TITLE  
**GAYLORD HIGH SCHOOL**  
**AUDITORIUM LIGHTING UPGRADES**  
 ELECTRICAL TITLE SHEET

PROJECT TITLE  
 GAYLORD COMMUNITY SCHOOLS - PROJECT SF03.12  
**GHS AUDITORIUM LIGHTING UPGRADES**  
 GAYLORD, MICHIGAN

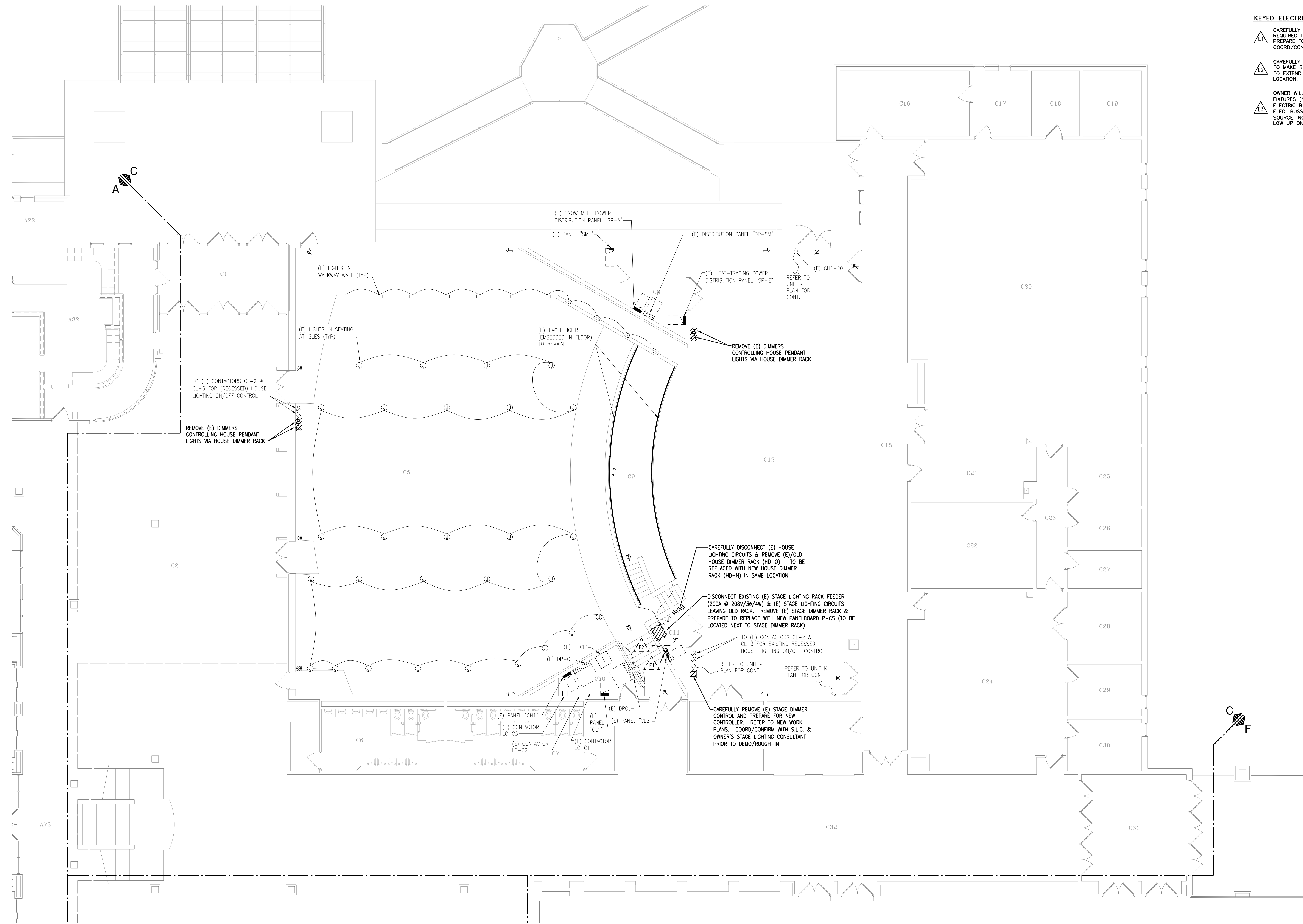
PROJECT NO.  
**284-20M**

DATE  
 APRIL 30, 2026

SHEET  
**ET**

**KEYED ELECTRICAL DEMOLITION NOTES:**

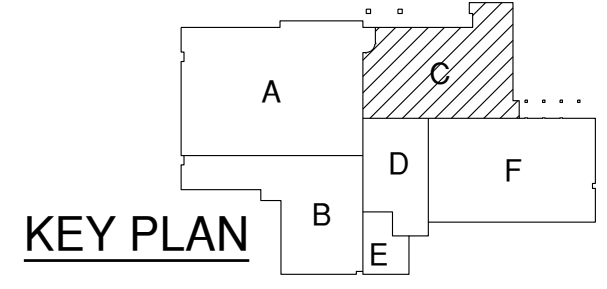
- ⚠️ CAREFULLY REMOVE (E) 50A @ 208V/1Ø RECEPTACLE, AS REQUIRED TO MAKE ROOM FOR NEW PANEL CS, AND PREPARE TO RELOCATE IT TO A NEARBY LOCATION. COORD/CONFIRM LOCATION W/ OWNER PRI.
- ⚠️ CAREFULLY REMOVE (E) EXHAUST FAN SWITCH, AS REQUIRED TO MAKE ROOM FOR NEW NEW PANEL P-CS, AND PREPARE TO EXTEND (E) CKT TO RELOCATED SWITCH AT A NEARBY LOCATION.
- ⚠️ OWNER WILL DISCONNECT/REMOVE EXISTING STAGE LIGHT FIXTURES (NOT SHOWN) CURRENTLY PLUGGED INTO (E) ELECTRIC BUSWAYS, AFTERWARDS, E.C. SHALL REMOVE (E) ELEC. BUSWAYS, J-BOXES, & CONDUIT/WIRE BACK TO SOURCE. NOTE THESE (E) CONDUITS ARE LOCATED DOWN LOW UP ON THE CATWALK.



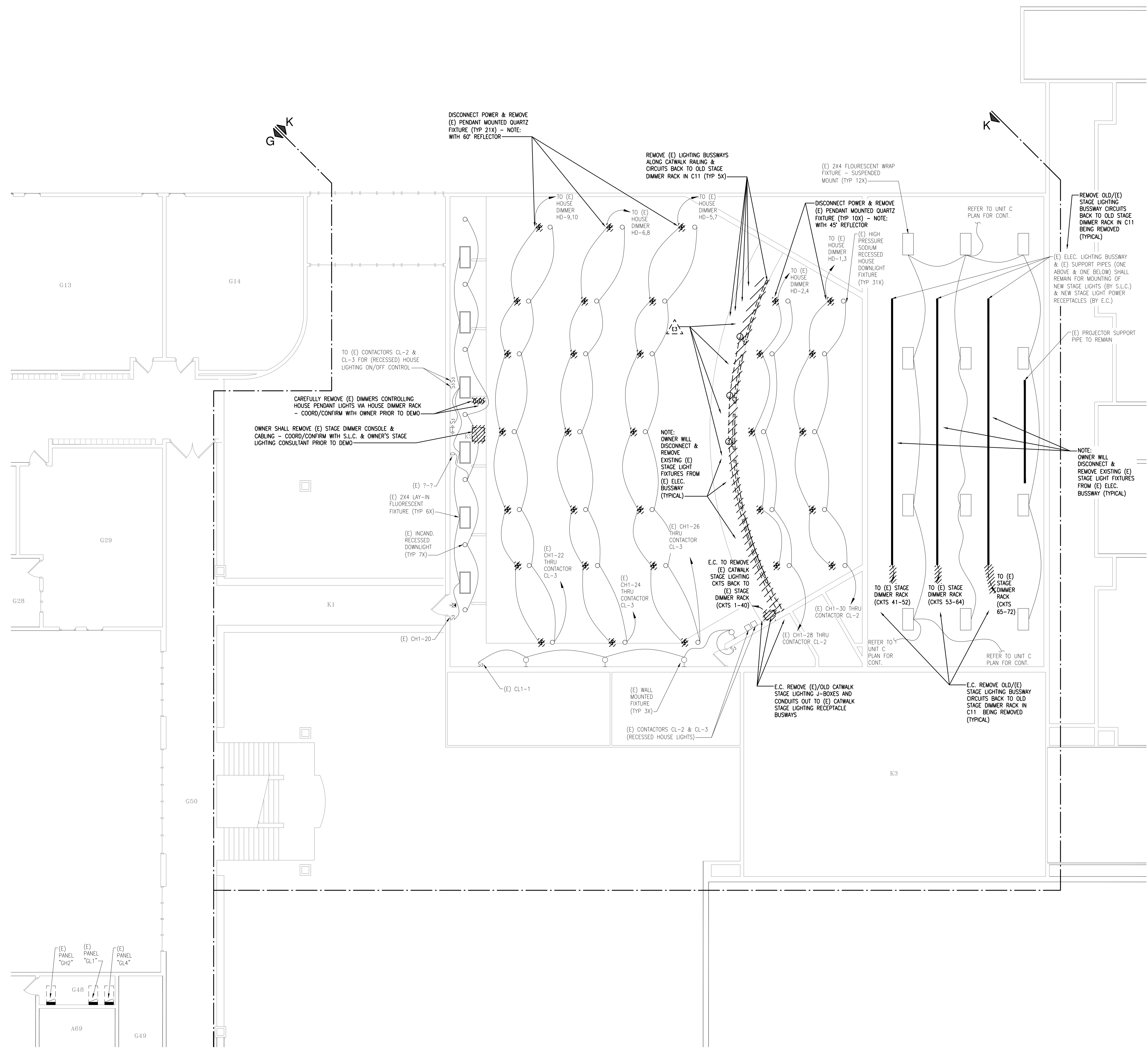
**ROOM LEGEND - UNIT C**

- C1 VESTIBULE
- C2 COMMONS
- C5 AUDITORIUM
- C6 MEN'S TOILET
- C7 WOMEN'S TOILET
- C8 STORAGE
- C9 ORCHESTRA PIT
- C10 STORAGE
- C11 STORAGE
- C12 STAGE
- C13 STORAGE
- C14 CONCESSIONS
- C15 CORRIDOR
- C16 LIBRARY/WORK AREA
- C17 OFFICE
- C18 INSTRUMENT REPAIR
- C19 PERCUSSION STORAGE
- C20 BAND
- C21 UNIFORM STORAGE
- C22 ENSEMBLE
- C23 CORRIDOR
- C24 CHORAL
- C25 PRACTICE
- C26 PRACTICE
- C27 PRACTICE
- C28 RISER STORAGE
- C29 MUSIC LIBRARY
- C30 OFFICE
- C31 VESTIBULE
- C32 CORRIDOR

PLAN NORTH NORTH  
**ELECTRICAL DEMOLITION PLAN**  
 SCALE: 1/8" = 1'-0"

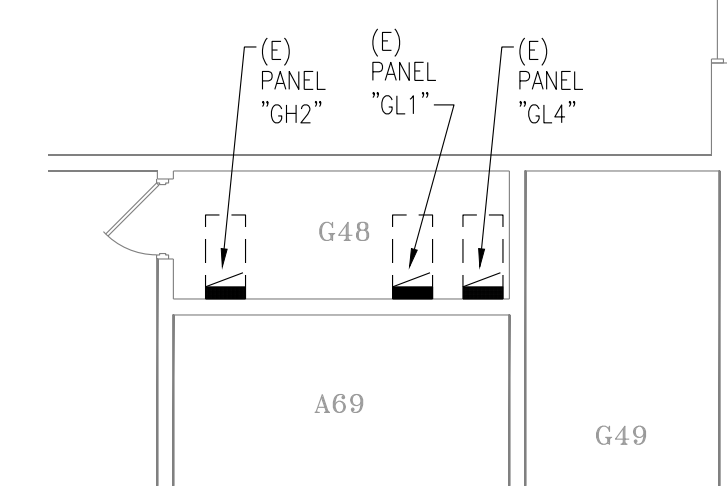


JLK Engineering Project: 284-20M (GHS) - Electrical Demolition Plan - Unit C - 2026-04-30



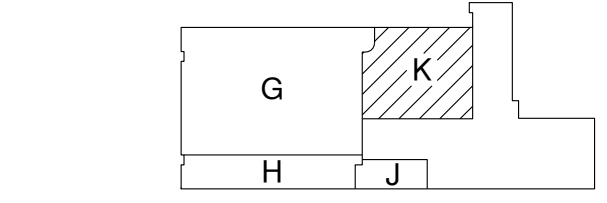
**KEYED ELECTRICAL DEMOLITION NOTES:**

- E1 CAREFULLY REMOVE (E) 50A @ 208V/1Ø RECEPTACLE, AS REQUIRED TO MAKE ROOM FOR NEW PANEL CS, AND PREPARE TO RELOCATE IT TO A NEARBY LOCATION. COORD/CONFIRM LOCATION W/ OWNER PRI.
- E2 CAREFULLY REMOVE (E) EXHAUST FAN SWITCH, AS REQUIRED TO MAKE ROOM FOR NEW NEW PANEL P-CS, AND PREPARE TO EXTEND (E) CKT TO RELOCATED SWITCH AT A NEARBY LOCATION.
- E3 OWNER WILL DISCONNECT/REMOVE EXISTING STAGE LIGHT FIXTURES (NOT SHOWN CURRENTLY PLUGGED INTO (E) ELECTRIC BUSWAYS. AFTERWARDS, E.C. SHALL REMOVE (E) ELEC. BUSWAYS, J-BOXES, & CONDUIT/WIRE BACK TO SOURCE. NOTE THESE (E) CONDUITS ARE LOCATED DOWN LOW UP ON THE CATWALK.



**ROOM LEGEND - UNIT K**

- K1 BRIDGE
- K2 SOUND & LIGHT CONTROL MEZZANINE
- K3 MECHANICAL ROOM



KEY PLAN

PLAN NORTH  
ELECTRICAL DEMOLITION PLAN  
SCALE: 1/8" = 1'-0"

DRAWING TITLE  
GAYLORD HIGH SCHOOL - UNIT K  
ELECTRICAL DEMOLITION PLAN

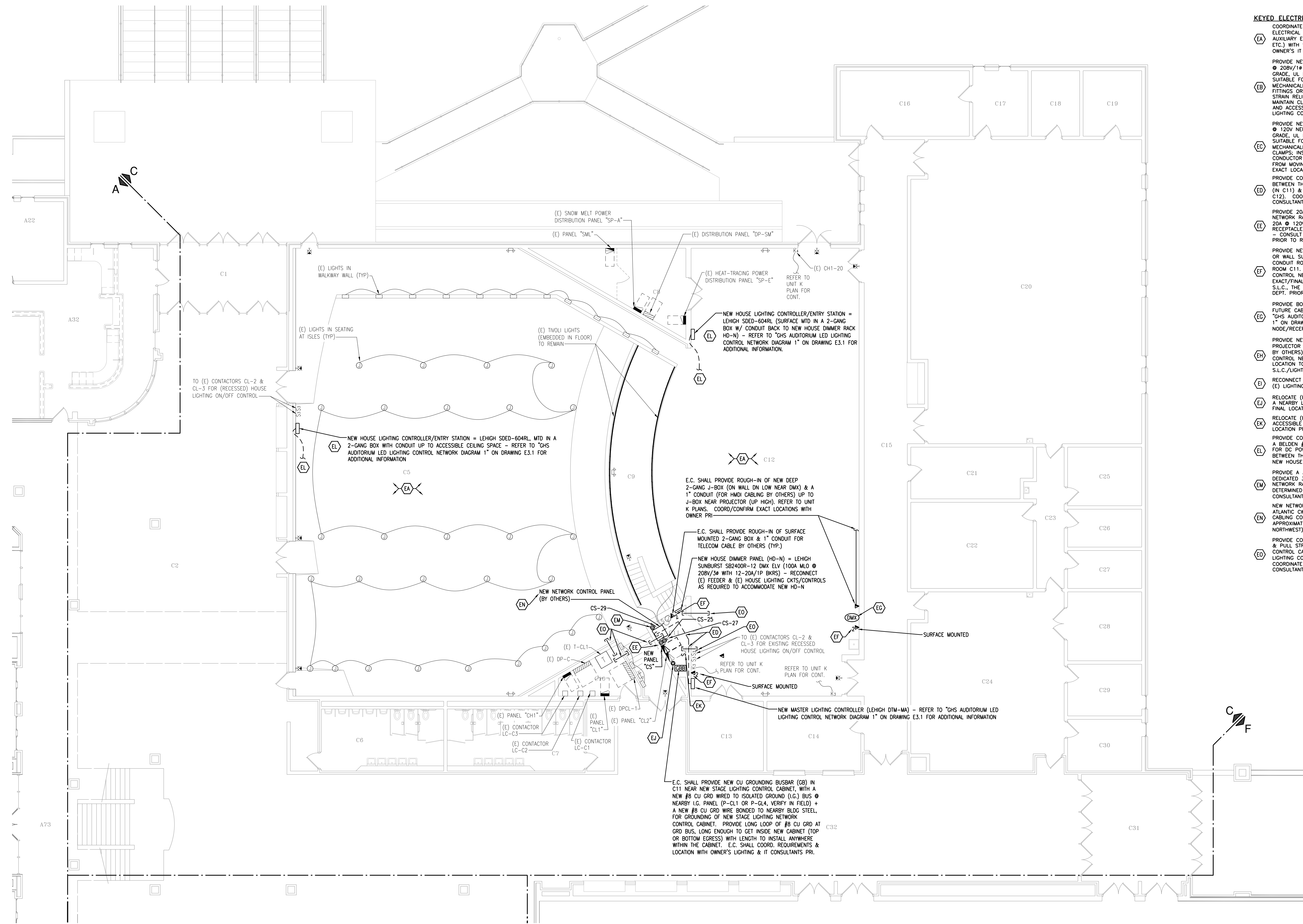
PROJECT TITLE  
GAYLORD COMMUNITY SCHOOLS - PROJECT SF3.12  
GHS AUDITORIUM LIGHTING UPGRADES  
GAYLORD, MICHIGAN

PROJECT NO.  
284-20M

DATE  
APRIL 30, 2026

SHEET  
E1.2

JLK Engineering Project: 284-20M Rev: 01 12/26/2025 10:45:00 AM 10/14/2025 10:45:00 AM 10/14/2025 10:45:00 AM

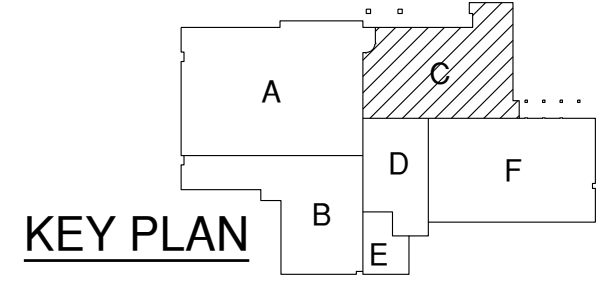


- KEYED ELECTRICAL NOTES:**
- (EA) COORDINATE LOCATION AND MOUNTING HEIGHT OF ALL ELECTRICAL DEVICES, LIGHTING, CONTROLS, SWITCHING, AND AUXILIARY ELECTRICAL DEVICES (I.E. TELECOM, AUDIO/VIDEO, ETC.) WITH S.L.C. OWNER'S LIGHTING CONSULTANT, & OWNER'S IT DEPT. PRIOR TO ROUGH-IN.
  - (EB) PROVIDE NEW RECEPT. & CIRCUIT TO NEW PANEL "CS": 20A @ 208V/1Ø 16-20R TWIST-LOCK RECEPTACLE - INDUSTRIAL GRADE, UL LISTED FOR THEATRICAL/ENTERTAINMENT USE, SUITABLE FOR OVERHEAD MOUNTING LOCATIONS.
  - (EC) MECHANICALLY SECURED TO (E) SUPPORT PIPE USING FITTINGS OR CLAMPS, INSTALLED TO MAINTAIN PROPER STRAIN RELIEF AND CONDUCTOR PROTECTION; INSTALLED TO MAINTAIN CLEARANCES FROM MOVING RIGGING, LUMINAIRES, AND ACCESS PATHS. COORD. EXACT LOCATIONS WITH S.L.C. & LIGHTING CONSULTANT PRI.
  - (ED) PROVIDE NEW RECEPT. & CIRCUIT TO NEW PANEL "CS": 20A @ 120V NEMA 5-20 DUPLEX RECEPTACLE - INDUSTRIAL GRADE, UL LISTED FOR THEATRICAL/ENTERTAINMENT USE, SUITABLE FOR OVERHEAD MOUNTING LOCATIONS.
  - (EE) MECHANICALLY SECURED TO (E) PIPE USING FITTINGS OR CLAMPS, INSTALLED TO MAINTAIN PROPER STRAIN RELIEF AND CONDUCTOR PROTECTION; INSTALLED TO MAINTAIN CLEARANCES FROM MOVING RIGGING/LUMINAIRES/ACCESS PATHS. COORD. EXACT LOCATIONS WITH LIGHTING CONSULTANT PRI.
  - (EF) PROVIDE CONDUIT ROUGH-IN & HOUSE CONTROL CABLING BETWEEN THE NEW NETWORK LIGHTING CONTROL PANEL/RACK (IN C11) & THE NEW MASTER LIGHTING CONTROLLER (IN C12). COORD. REQUIREMENTS W/ S.L.C. & LIGHTING CONSULTANT PRI.
  - (EG) PROVIDE 20A @ 120V QUAD RECEPTACLE FOR LIGHTING NETWORK RACK & UPS, EACH DUPLEX WITH OWN DEDICATED 20A @ 120V CIRCUIT TO PANEL "CS". EXACT LOCATION OF RECEPTACLE TO BE DETERMINED BEHIND HOLES IN CABINETS - CONSULT WITH S.L.C., LIGHTING CONSULTANT, & IT DEPT. PRIOR TO ROUGH-IN.
  - (EH) PROVIDE NEW DUAL PORT CAT6 R45 NETWORK OUTLET (PIPE OR WALL SURFACE MTD AS NOTED), IN 2-GANG BOX WITH 1" CONDUIT ROUTED TO/FROM NEW LIGHTING CONTROLLER IN ROOM C11. REFER TO "GHS AUDITORIUM LED LIGHTING CONTROL NETWORK DIAGRAM 1" ON DRAWING E3.1.
  - (EI) EXACT/FINAL LOCATIONS TO BE COORD/CONFIRMED WITH S.L.C., THE OWNER'S LIGHTING CONSULTANT, & OWNER'S IT DEPT. PRIOR TO ROUGH-IN.
  - (EJ) PROVIDE BOX/CONDUIT ROUGH-IN FOR NEW DMX NODE & FUTURE CABLING (CAT6 OR DMX BY OTHERS). REFER TO "GHS AUDITORIUM LED LIGHTING CONTROL NETWORK DIAGRAM 1" ON DRAWING E3.1. COORD/CONFIRM FINAL LOCATIONS OF NODE/RECEPTACLE WITH THE S.L.C. PRIOR TO ROUGH-IN.
  - (EK) PROVIDE NEW SINGLE-PORT HDMI FEMALE PIPE-MOUNTED PROJECTOR OUTLET & ASSOCIATED CABLING (CAT6 & HDMI BY OTHERS). REFER TO "GHS AUDITORIUM LED LIGHTING CONTROL NETWORK DIAGRAM 1" ON DRAWING E3.1. FINAL LOCATION TO BE DETERMINED - CONSULT WITH S.L.C./LIGHTING CONSULTANT PRIOR TO ROUGH-IN.
  - (EL) RECONNECT NEW HOUSE LIGHTING PENDANT (HP) TO EXISTING (E) LIGHTING CIRCUIT FEEDING OLD QUARTZ PENDANT LIGHT.
  - (EM) RELOCATE (E) 50A @ 208V RECEPTACLE, & EXTEND CKT. TO A NEARBY LOCATION. E.C. SHALL VERIFY WITH OWNER ON FINAL LOCATION PRIOR TO ROUGH-IN.
  - (EN) RELOCATE (E) EF CONTROL SWITCH TO A NEARBY ACCESSIBLE LOCATION. E.C. SHALL VERIFY WITH OWNER FINAL LOCATION PRIOR TO ROUGH-IN.
  - (EO) PROVIDE CONTROL CABLING FOR HOUSE LIGHT CONTROLS = A BELDEN #9842 + (3) #16 GA. THHN STRANDED WIRED FOR DC POWER, TO NEW HOUSE LIGHTING CONTROLS - BETWEEN THE (3) HOUSE LIGHTING CONTROLLERS AND THE NEW HOUSE DIMMER RACK (LOCATED IN C11).
  - (EP) PROVIDE A 30A NEMA L5-30R RECEPTACLE, FROM A NEW DEDICATED 30A BKR IN PANEL "CS" FOR FUTURE LIGHTING NETWORK RACK UPS. LOCATION OF RECEPTACLE TO BE DETERMINED - COORD/CONFIRM WITH LIGHTING CONSULTANT/IT DEPT. PRIOR TO ROUGH-IN.
  - (EQ) NEW NETWORK CABINET PROVIDED BY OTHERS (#MIDDLE ATLANTIC CWR-28-28X) AND INSTALLED BY OWNER'S CABLING CONTRACTOR. NOTE CABINET SHALL BE LOCATED APPROXIMATELY 8" FROM THE WALL TO THE RIGHT (PLAN NORTHWEST) TO PROVIDE ACCESS TO CABINET.
  - (ER) PROVIDE CONDUIT SLEEVES (FIRE CALKED), WITH BUSHINGS & PULL STRINGS, FOR NEW HOUSE & STAGE LIGHTING CONTROL CABLES AS SHOWN ON "GHS AUDITORIUM LED LIGHTING CONTROL NETWORK DIAGRAM 1" ON DRAWING E3.1. COORDINATE PATHWAYS WITH S.L.C. & OWNER'S LIGHTING CONSULTANT PRIOR TO ROUGH-IN.

**ROOM LEGEND - UNIT C**

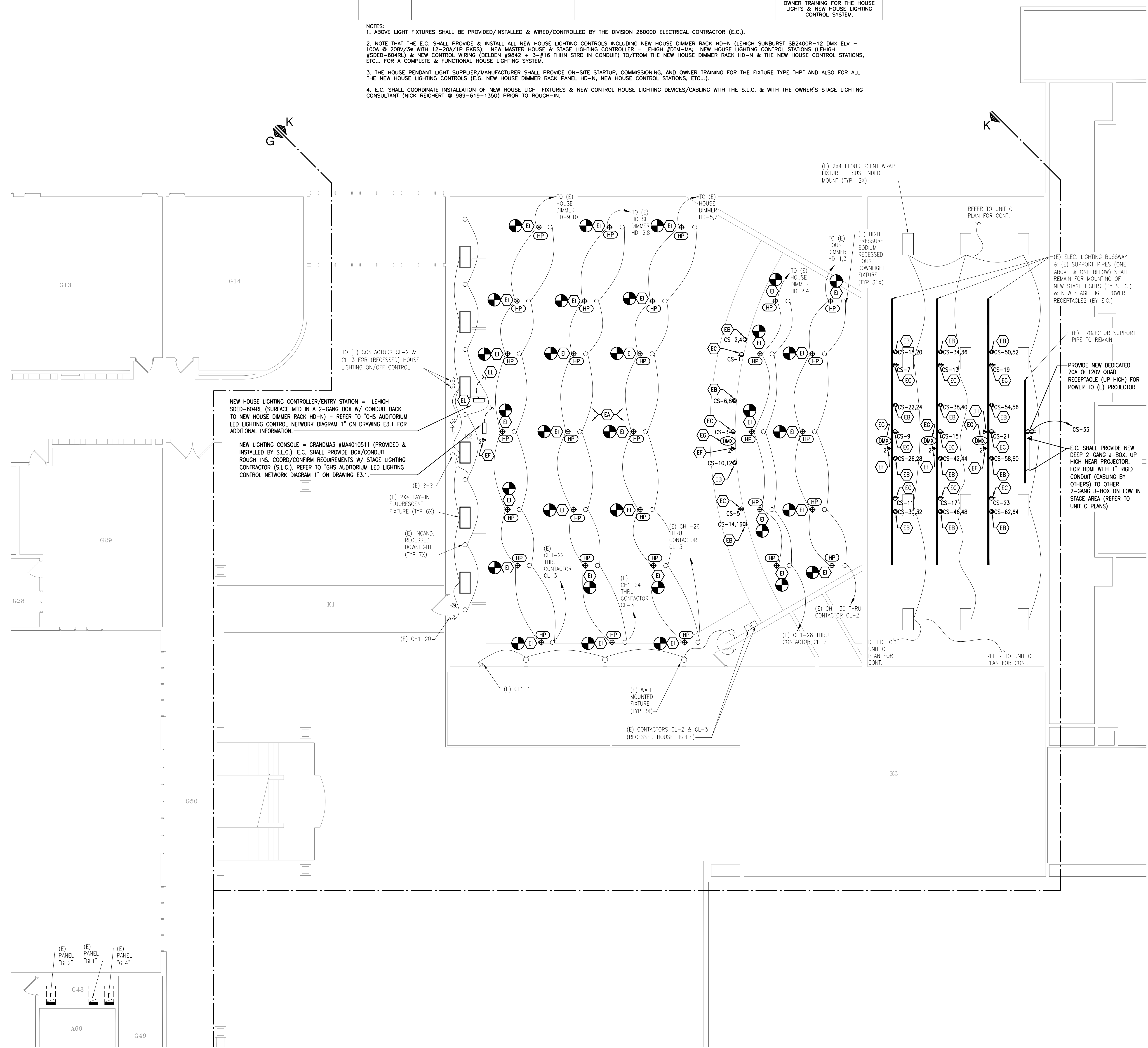
C1	VESTIBULE
C2	COMMONS
C5	AUDITORIUM
C6	MEN'S TOILET
C7	WOMEN'S TOILET
C8	STORAGE
C9	ORCHESTRA PIT
C10	STORAGE
C11	STORAGE
C12	STAGE
C13	STORAGE
C14	CONCESSIONS
C15	CORRIDOR
C16	LIBRARY/WORK AREA
C17	OFFICE
C18	INSTRUMENT REPAIR
C19	PERCUSSION STORAGE
C20	BAND
C21	UNIFORM STORAGE
C22	ENSEMBLE
C23	CORRIDOR
C24	CHORAL
C25	PRACTICE
C26	PRACTICE
C27	PRACTICE
C28	RISER STORAGE
C29	MUSIC LIBRARY
C30	OFFICE
C31	VESTIBULE
C32	CORRIDOR

PLAN NORTH  
ELECTRICAL NEW WORK PLAN  
SCALE: 1/8" = 1'-0"



LIGHTING FIXTURE SCHEDULE						
QUANTITY	TYPE	DESCRIPTION	MANUFACTURERS	LAMPS	VOLTS/WATTS	REMARKS
REFER TO PLANS (31)	HP	NEW 6.6" DIAMETER PENDANT LIGHT FIXTURE, LED WITH 0-10V DIMMING & DMX; 35 DEGREE REFLECTOR; EXTRUDED ALUMINUM WITH WHITE FINISH	1. ALW CORE 6 SERIES: CHPS-100902735NN-NP01-SW-RS36 2. ENGINEER APPROVED EQUAL.	LED 10,063 LUMENS 2,700 K TEMP	120V / 98W	E.C. SHALL PROVIDE/INSTALL THESE NEW HOUSE LED PENDANTS TO REPLACE OLD PENDANTS WITH 500W QUARTZ LAMPS) & CONNECT TO EXISTING LIGHTING CKTS. E.C. SHALL PROVIDE/INSTALL ALL NEW CONTROLS REQUIRED FOR THE HOUSE LIGHTING SYSTEM. HOUSE LIGHTING FIXTURE & CONTROLS MANUFACTURER SHALL PROVIDE STARTUP/COMMISSIONING & OWNER TRAINING FOR THE HOUSE LIGHTS & NEW HOUSE LIGHTING CONTROL SYSTEM.

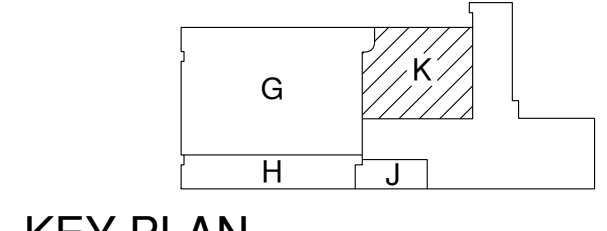
- NOTES:
1. ABOVE LIGHT FIXTURES SHALL BE PROVIDED/INSTALLED & WIRED/CONTROLLED BY THE DIVISION 260000 ELECTRICAL CONTRACTOR (E.C.).
  2. NOTE THAT THE E.C. SHALL PROVIDE & INSTALL ALL NEW HOUSE LIGHTING CONTROLS INCLUDING NEW HOUSE DIMMER RACK HD-N (LEHIGH SUNBURST SB2400R-12 DMX ELY - 100A @ 208V/3Ø WITH 12-20A/1P BKRS); NEW MASTER HOUSE & STAGE LIGHTING CONTROLLER = LEHIGH #DTM-MA; NEW HOUSE LIGHTING CONTROL STATIONS (LEHIGH #SDD-04RL) & NEW CONTROL WIRING (BELDEN #9842 + 3-#16 THIN STRD IN CONDUIT) TO/FROM THE NEW HOUSE DIMMER RACK HD-N & THE NEW HOUSE CONTROL STATIONS, ETC., FOR A COMPLETE & FUNCTIONAL HOUSE LIGHTING SYSTEM.
  3. THE HOUSE PENDANT LIGHT SUPPLIER/MANUFACTURER SHALL PROVIDE ON-SITE STARTUP, COMMISSIONING, AND OWNER TRAINING FOR THE FIXTURE TYPE "HP" AND ALSO FOR ALL THE NEW HOUSE LIGHTING CONTROLS (E.G. NEW HOUSE DIMMER RACK HD-N, NEW HOUSE CONTROL STATIONS, ETC.).
  4. E.C. SHALL COORDINATE INSTALLATION OF NEW HOUSE LIGHT FIXTURES & NEW CONTROL HOUSE LIGHTING DEVICES/CABLING WITH THE S.L.C. & WITH THE OWNER'S STAGE LIGHTING CONSULTANT (NICK REICHERT @ 989-619-1350) PRIOR TO ROUGH-IN.



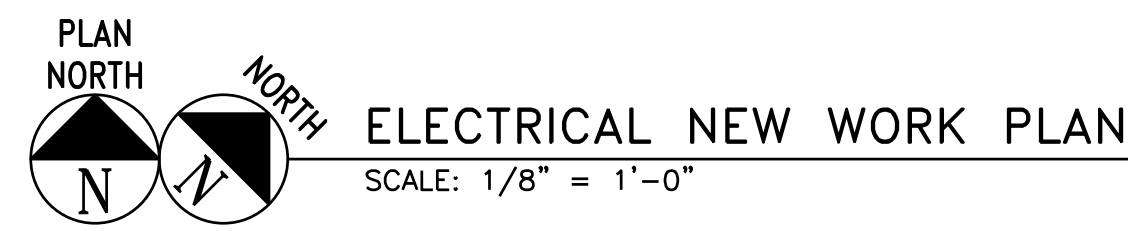
- KEYED ELECTRICAL NOTES:**
- EA COORDINATE LOCATION AND MOUNTING HEIGHT OF ALL ELECTRICAL DEVICES, LIGHTING, CONTROLS/SWITCHING, AND AUXILIARY ELECTRICAL DEVICES (I.E. TELECOM, AUDIO/VIDEO, ETC.) WITH S.L.C. OWNER'S LIGHTING CONSULTANT, & OWNER'S IT DEPT. PRIOR TO ROUGH-IN.
  - EB PROVIDE NEW RECEPT. & CIRCUIT TO NEW PANEL "CS": 20A @ 208V/1Ø L6-20R TWIST-LOCK RECEPTACLE - INDUSTRIAL GRADE, UL LISTED FOR THEATRICAL/ENTERTAINMENT USE, SUITABLE FOR OVERHEAD MOUNTING LOCATIONS.
  - EC MECHANICALLY SECURED TO (E) SUPPORT PIPE USING FITTINGS OR CLAMPS. INSTALLED TO MAINTAIN PROPER STRAIN RELIEF AND CONDUCTOR PROTECTION; INSTALLED TO MAINTAIN CLEARANCES FROM MOVING RIGGING, LUMINAIRES, AND ACCESS PATHS. COORD. EXACT LOCATIONS WITH S.L.C. & LIGHTING CONSULTANT PRI.
  - ED PROVIDE NEW RECEPT. & CIRCUIT TO NEW PANEL "CS": 20A @ 120V NEMA 5-20 DUPLEX RECEPTACLE - INDUSTRIAL GRADE, UL LISTED FOR THEATRICAL/ENTERTAINMENT USE, SUITABLE FOR OVERHEAD MOUNTING LOCATIONS; MECHANICALLY SECURED TO (E) PIPE USING FITTINGS OR CLAMPS; INSTALLED TO MAINTAIN PROPER STRAIN RELIEF AND CONDUCTOR PROTECTION; INSTALLED TO MAINTAIN CLEARANCES FROM MOVING RIGGING/LUMINAIRES/ACCESS PATHS. COORD. EXACT LOCATIONS WITH LIGHTING CONSULTANT PRI.
  - EE PROVIDE CONDUIT ROUGH-IN & HOUSE CONTROL CABLING BETWEEN THE NEW NETWORK LIGHTING CONTROL PANEL/RACK (IN C11) & THE NEW MASTER LIGHTING CONTROLLER (IN C12). COORD. REQUIREMENTS W/ S.L.C. & LIGHTING CONSULTANT PRI.
  - EF PROVIDE 20A @ 120V QUAD RECEPTACLE FOR LIGHTING NETWORK RACK & UPS. EACH DUPLEX WITH OWN DEDICATED 20A @ 120V CIRCUIT TO PANEL "CS". EXACT LOCATION OF RECEPTACLE TO BE DETERMINED BEHIND HOLES IN CABINET - CONSULT WITH S.L.C., LIGHTING CONSULTANT, & IT DEPT. PRIOR TO ROUGH-IN.
  - EG PROVIDE NEW DUAL PORT CAT6 R4S NETWORK OUTLET (PIPE OR WALL SURFACE MTD AS NOTED), IN 2-GANG BOX WITH 1" CONDUIT ROUTED TO/FROM NEW LIGHTING CONTROLLER IN ROOM C11. REFER TO "GHS AUDITORIUM LED LIGHTING CONTROL NETWORK DIAGRAM 1" ON DRAWING E3.1.
  - EH EXACT/FINAL LOCATIONS TO BE COORD/CONFIRMED WITH S.L.C., THE OWNER'S LIGHTING CONSULTANT, & OWNER'S IT DEPT. PRIOR TO ROUGH-IN.
  - EI PROVIDE BOX/CONDUIT ROUGH-IN FOR NEW DMX NODE & FUTURE CABLING (CAT6 OR DMX BY OTHERS). REFER TO "GHS AUDITORIUM LED LIGHTING CONTROL NETWORK DIAGRAM 1" ON DRAWING E3.1. FINAL LOCATION TO BE DETERMINED - CONSULT WITH S.L.C./LIGHTING CONSULTANT PRIOR TO ROUGH-IN.
  - EJ RECONNECT NEW HOUSE LIGHTING PENDANT (HP) TO EXISTING (E) OTHER LIGHTING CIRCUIT FEEDING OLD QUARTZ PENDANT LIGHT.
  - EK RELOCATE (E) 50A @ 208V RECEPTACLE, & EXTEND CKT. TO A NEARBY LOCATION. E.C. SHALL VERIFY WITH OWNER ON FINAL LOCATION PRIOR TO ROUGH-IN.
  - EL PROVIDE CONTROL CABLING FOR HOUSE LIGHT CONTROLS = A BELDEN #9842 + (3) #16 GA. THIN STRANDED WIRED FOR DC POWER, TO NEW HOUSE LIGHTING CONTROLS - BETWEEN THE (3) HOUSE LIGHTING CONTROLLERS AND THE NEW HOUSE DIMMER RACK (LOCATED IN C11).
  - EM PROVIDE A 30A NEMA L5-30R RECEPTACLE, FROM A NEW DEDICATED 30A BKR IN PANEL "CS" FOR FUTURE LIGHTING NETWORK RACK UPS. LOCATION OF RECEPTACLE TO BE DETERMINED - COORD/CONFIRM WITH LIGHTING CONSULTANT/IT DEPT. PRIOR TO ROUGH-IN.
  - EN NEW NETWORK CABINET PROVIDED BY OTHERS (#MIDDLE ATLANTIC CWR-26-26XK) AND INSTALLED BY OWNER'S CABLING CONTRACTOR. NOTE CABINET SHALL BE LOCATED APPROXIMATELY 8' FROM THE WALL TO THE RIGHT (PLAN NORTHWEST) TO PROVIDE ACCESS TO CABINET.
  - EO PROVIDE CONDUIT SLEEVES (FIRE CALULKED), WITH BUSHINGS & PULL STRINGS, FOR NEW HOUSE & STAGE LIGHTING CONTROL CABLES AS SHOWN ON "GHS AUDITORIUM LED LIGHTING CONTROL NETWORK DIAGRAM 1" ON DRAWING E3.1. COORDINATE PATHWAYS WITH S.L.C. & OWNER'S LIGHTING CONSULTANT PRIOR TO ROUGH-IN.

**ROOM LEGEND - UNIT K**

- K1 BRIDGE
- K2 SOUND & LIGHT CONTROL MEZZANINE
- K3 MECHANICAL ROOM



KEY PLAN



**ELECTRICAL NEW WORK PLAN**

JLK ENGINEERING  
Mechanical | Electrical | Plumbing  
5706 Chathamwood Ct., | Gaylord, MI 49735 | P 989.448.4631  
www.jlkeengineering.com

JLK Engineering  
Project Number:  
AEA 2603-01  
The Drawing is Copyright  
© J.L.K. Engineering, PLLC

**ANTHONY P. ESSON**  
ARCHITECT  
PO BOX 479  
GAYLORD, MICHIGAN  
TELEPHONE: (989) 735-0585

DRAWING TITLE  
**GAYLORD HIGH SCHOOL - UNIT K**  
**ELECTRICAL NEW WORK PLAN**

PROJECT TITLE  
GAYLORD COMMUNITY SCHOOLS - PROJECT SF3.12  
**GHS AUDITORIUM LIGHTING UPGRADES**  
GAYLORD, MICHIGAN

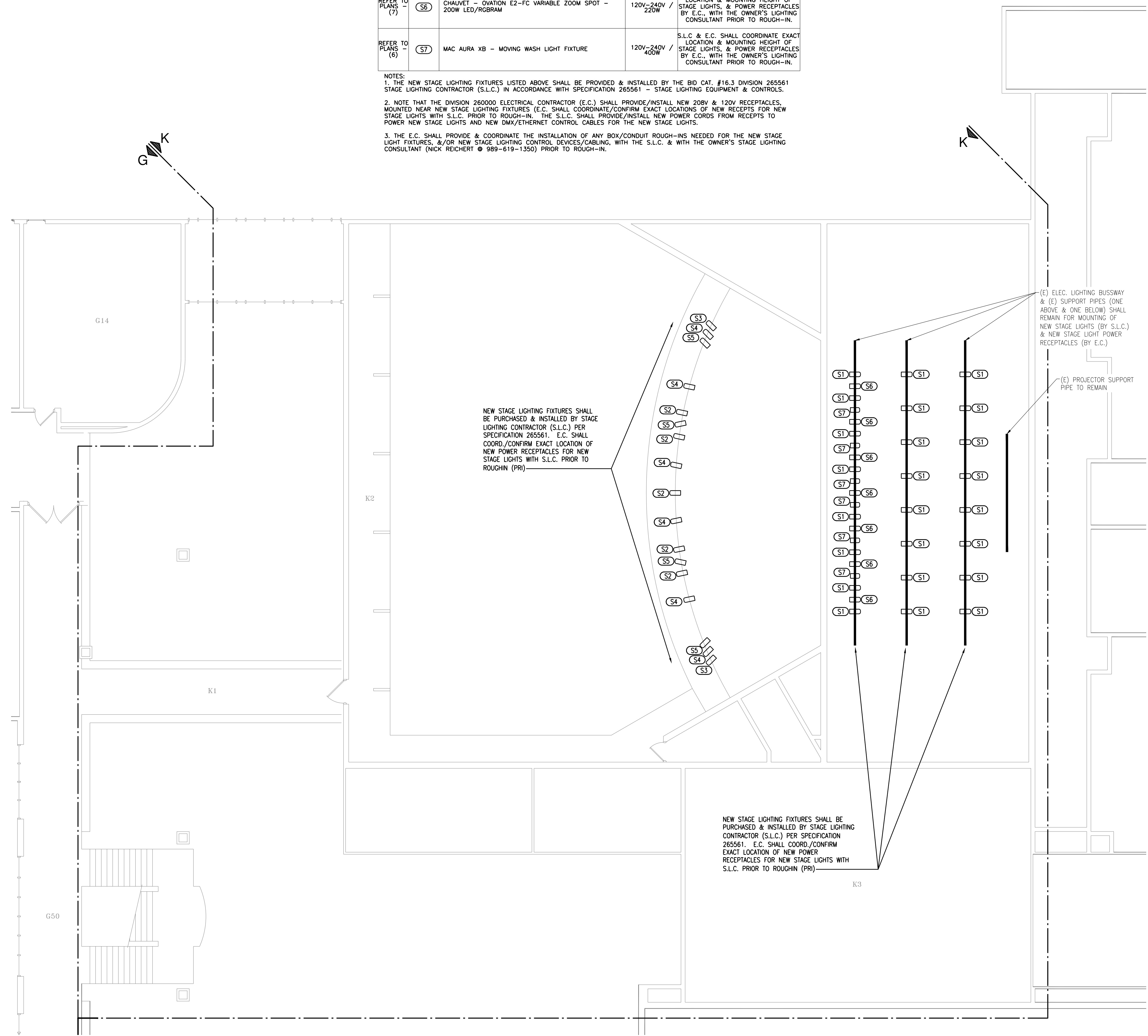
PROJECT NO.  
284-20M

DATE  
APRIL 30, 2026

SHEET  
**E2.2**

QTY	TYPE	DESCRIPTION	VOLTS/WATTS	REMARKS
REFER TO PLANS (24)	(S1)	CHALUVET - OVATION P-56FC LED PAR WASH WITH LENS KIT - 180W LED RGBAL	120V-240V / 180W	S.L.C. & E.C. SHALL COORDINATE EXACT LOCATION & MOUNTING HEIGHT OF STAGE LIGHTS, & POWER RECEPTACLES BY E.C., WITH THE OWNER'S LIGHTING CONSULTANT PRIOR TO ROUGH-IN.
REFER TO PLANS (5)	(S2)	CHALUVET - OVATION REVE E-3 BLK 15-30 DEG ZOOM WITH 6" ELLIPSOIDAL - 360W LED/RGBAM	120V-240V / 360W	S.L.C. & E.C. SHALL COORDINATE EXACT LOCATION & MOUNTING HEIGHT OF STAGE LIGHTS, & POWER RECEPTACLES BY E.C., WITH THE OWNER'S LIGHTING CONSULTANT PRIOR TO ROUGH-IN.
REFER TO PLANS (2)	(S3)	CHALUVET - OVATION REVE E-3, 36 DEGREE ELLIPSOIDAL - 360W LED/RGBAM	120V-240V / 360W	S.L.C. & E.C. SHALL COORDINATE EXACT LOCATION & MOUNTING HEIGHT OF STAGE LIGHTS, & POWER RECEPTACLES BY E.C., WITH THE OWNER'S LIGHTING CONSULTANT PRIOR TO ROUGH-IN.
REFER TO PLANS (6)	(S4)	CHALUVET - OVATION REVE E-3, 26 DEGREE ELLIPSOIDAL - 360W LED/RGBAM	120V-240V / 360W	S.L.C. & E.C. SHALL COORDINATE EXACT LOCATION & MOUNTING HEIGHT OF STAGE LIGHTS, & POWER RECEPTACLES BY E.C., WITH THE OWNER'S LIGHTING CONSULTANT PRIOR TO ROUGH-IN.
REFER TO PLANS (4)	(S5)	CHALUVET - OVATION REVE E-3, 19 DEGREE ELLIPSOIDAL - 360W LED/RGBAM	120V-240V / 360W	S.L.C. & E.C. SHALL COORDINATE EXACT LOCATION & MOUNTING HEIGHT OF STAGE LIGHTS, & POWER RECEPTACLES BY E.C., WITH THE OWNER'S LIGHTING CONSULTANT PRIOR TO ROUGH-IN.
REFER TO PLANS (7)	(S6)	CHALUVET - OVATION E2-FC VARIABLE ZOOM SPOT - 200W LED/RGBAM	120V-240V / 220W	S.L.C. & E.C. SHALL COORDINATE EXACT LOCATION & MOUNTING HEIGHT OF STAGE LIGHTS, & POWER RECEPTACLES BY E.C., WITH THE OWNER'S LIGHTING CONSULTANT PRIOR TO ROUGH-IN.
REFER TO PLANS (6)	(S7)	MAC AURA XB - MOVING WASH LIGHT FIXTURE	120V-240V / 400W	S.L.C. & E.C. SHALL COORDINATE EXACT LOCATION & MOUNTING HEIGHT OF STAGE LIGHTS, & POWER RECEPTACLES BY E.C., WITH THE OWNER'S LIGHTING CONSULTANT PRIOR TO ROUGH-IN.

NOTES:  
1. THE NEW STAGE LIGHTING FIXTURES LISTED ABOVE SHALL BE PROVIDED & INSTALLED BY THE BID CAT. #16.3 DIVISION 265561 STAGE LIGHTING CONTRACTOR (S.L.C.) IN ACCORDANCE WITH SPECIFICATION 265561 - STAGE LIGHTING EQUIPMENT & CONTROLS.  
2. NOTE THAT THE DIVISION 260000 ELECTRICAL CONTRACTOR (E.C.) SHALL PROVIDE/INSTALL NEW 208V & 120V RECEPTACLES MOUNTED NEAR NEW STAGE LIGHTING FIXTURES (E.C. SHALL COORDINATE/CONFIRM EXACT LOCATIONS OF NEW RECEPTS FOR NEW STAGE LIGHTS WITH S.L.C. PRIOR TO ROUGH-IN. THE S.L.C. SHALL PROVIDE/INSTALL NEW POWER CORDS FROM RECEPTS TO POWER NEW STAGE LIGHTS AND NEW DMX/ETHERNET CONTROL CABLES FOR THE NEW STAGE LIGHTS.  
3. THE E.C. SHALL PROVIDE & COORDINATE THE INSTALLATION OF ANY BOX/CONDUIT ROUGH-INS NEEDED FOR THE NEW STAGE LIGHT FIXTURES, &/OR NEW STAGE LIGHTING CONTROL DEVICES/CABLING, WITH THE S.L.C. & WITH THE OWNER'S STAGE LIGHTING CONSULTANT (NICK REICHERT ☎ 989-619-1350) PRIOR TO ROUGH-IN.

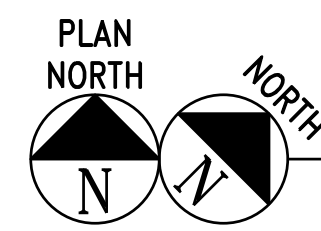


NEW STAGE LIGHTING FIXTURES SHALL BE PURCHASED & INSTALLED BY STAGE LIGHTING CONTRACTOR (S.L.C.) PER SPECIFICATION 265561. E.C. SHALL COORD./CONFIRM EXACT LOCATION OF NEW POWER RECEPTACLES FOR NEW STAGE LIGHTS WITH S.L.C. PRIOR TO ROUGHIN (PRI)

NEW STAGE LIGHTING FIXTURES SHALL BE PURCHASED & INSTALLED BY STAGE LIGHTING CONTRACTOR (S.L.C.) PER SPECIFICATION 265561. E.C. SHALL COORD./CONFIRM EXACT LOCATION OF NEW POWER RECEPTACLES FOR NEW STAGE LIGHTS WITH S.L.C. PRIOR TO ROUGHIN (PRI)

(E) ELEC. LIGHTING BUSWAY & (E) SUPPORT PIPES (ONE ABOVE & ONE BELOW) SHALL REMAIN FOR MOUNTING OF NEW STAGE LIGHTS (BY S.L.C.) & NEW STAGE LIGHT POWER RECEPTACLES (BY E.C.)

(E) PROJECTOR SUPPORT PIPE TO REMAIN

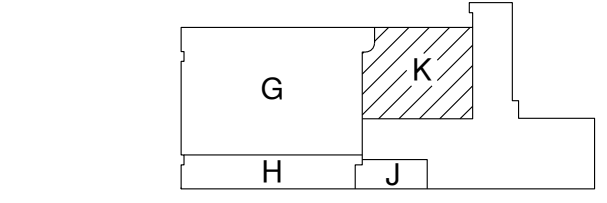


ELECTRICAL STAGE LIGHTING NEW WORK PLAN

SCALE: 1/8" = 1'-0"

ROOM LEGEND - UNIT K

- K1 BRIDGE
- K2 SOUND & LIGHT CONTROL MEZZANINE
- K3 MECHANICAL ROOM



KEY PLAN

JLK ENGINEERING  
Mechanical | Electrical | Plumbing  
5706 Charlevoix Ct. | Gaylord, MI 49735 | P 989-448-4631  
www.jlkengeering.com

The Drawing is Copyright  
© J.L.K. Engineering, PLLC  
AEA 2603-01

**ANTHONY P. ESSON**  
ARCHITECT  
GAYLORD, MICHIGAN  
PO BOX 479  
TELEPHONE: (869) 732-0585

DRAWING TITLE  
**GAYLORD HIGH SCHOOL - UNIT K**  
**ELECTRICAL STAGE LIGHTING NEW WORK PLAN**

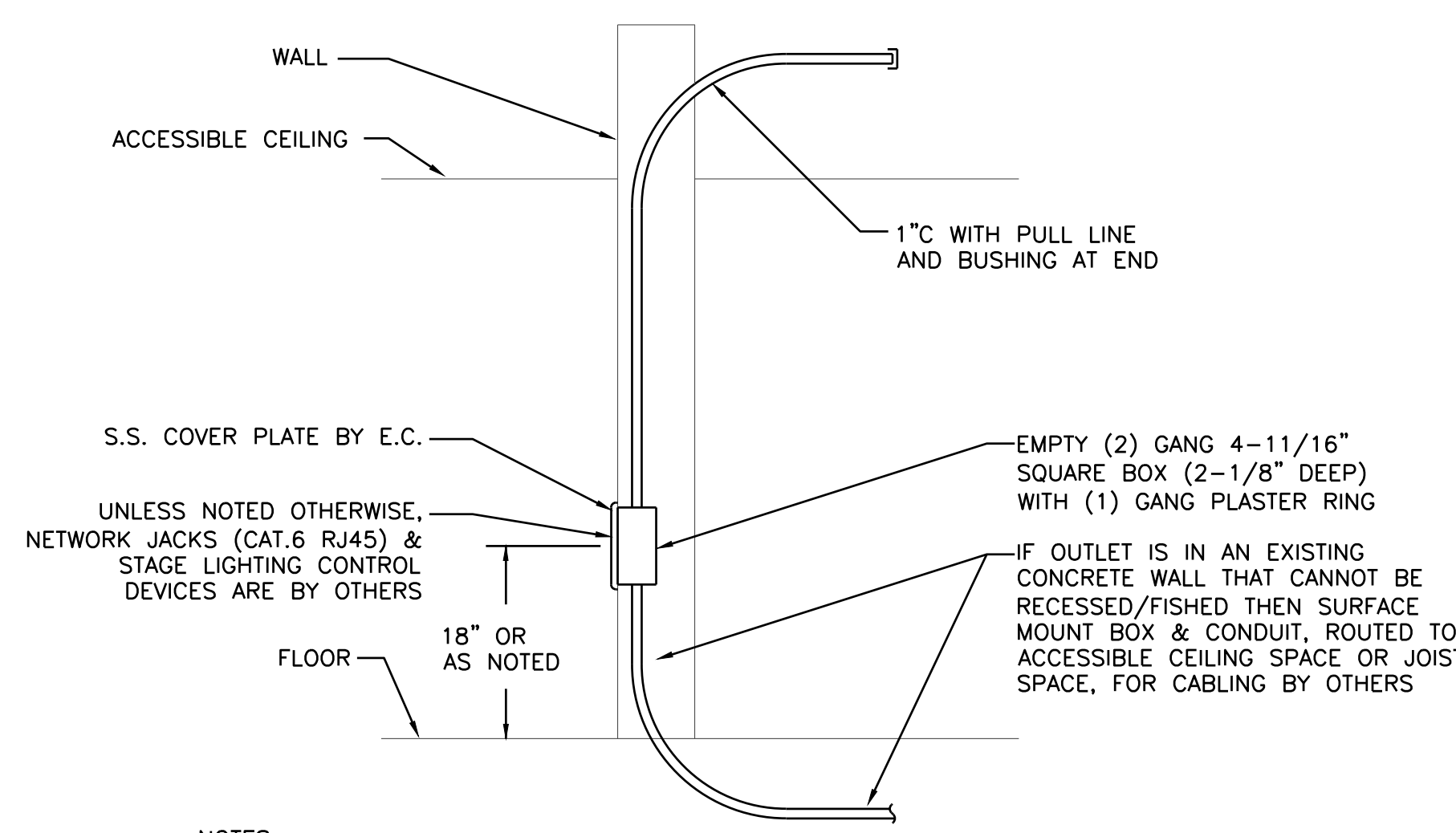
PROJECT TITLE  
**GHS AUDITORIUM LIGHTING UPGRADES**  
GAYLORD, MICHIGAN

PROJECT NO.  
**284-20M**

DATE  
APRIL 30, 2026

SHEET  
**E2.3**

J:\12\pwworkspace\20260426\260426.dwg - AutoCAD 2026 (PLOT) Plot: 04/30/2026, 04:41:57 PM, 2007, 10, 10, 10



NOTES:  
1. E.C. SHALL PROVIDE ROUGH-IN ONLY - UNLESS NOTED OTHERWISE, NETWORK JACKS (CAT.6 RJ45) & STAGE LIGHTING CONTROL DEVICES ARE BY OTHERS  
2. PROVIDE LABEL ON CONDUIT STATING OUTLET BOX LOCATION (E.G. ROOM NAME & NUMBER).  
3) WHERE OUTLETS ARE SHOWN IN ON EXISTING CONCRETE WALLS THAT CANNOT BE RECESSED/FISHED; SURFACE MOUNT 4\"/>

TELECOM & STAGE LIGHTING CONTROLS OUTLET DETAIL  
NO SCALE

PANEL	CS	225A MLO	BUSING SIZE:	225A	FED FROM:	(E) DPCL-1	
# OF POLES:	72	VOLTS: 120-208/3PH4W	NEUTRAL BUS:	225A	MOUNTING:	SURFACE	
PHASE:	3	GROUND BUS:	YES	TVSS:	NO	AIC RMS AMPS:	22,000
HERTZ:	60	ISOLATED GROUND:	YES	NEW PANEL TO REPLACE OLD STAGE DIMMER			
LOCATION:	ELECTRICAL CLOSET C11						
		REMARKS: RACK-200A @ 208V/3P MLO w/ (72)-20A/1P BKRS					
CIRCUIT	BREAKER	DESCRIPTION	A	B	C		
1	20	DEDICATED RECEPT - CATWALK NORTH	180				
3	20	DEDICATED RECEPT - CATWALK CENTER		180			
5	20	DEDICATED RECEPT - CATWALK SOUTH			180		
7	20	DEDICATED RECEPT - FRONT STAGE LIGHT BAR NORTH	180				
9	20	DEDICATED RECEPT - FRONT STAGE LIGHT BAR CENTER		180			
11	20	DEDICATED RECEPT - FRONT STAGE LIGHT BAR SOUTH			180		
13	20	DEDICATED RECEPT - MIDDLE STAGE LIGHT BAR NORTH	180				
15	20	DEDICATED RECEPT - MIDDLE STAGE LIGHT BAR CENTER		180			
17	20	DEDICATED RECEPT - MIDDLE STAGE LIGHT BAR SOUTH			180		
19	20	DEDICATED RECEPT - BACK STAGE LIGHT BAR NORTH	180				
21	20	DEDICATED RECEPT - BACK STAGE LIGHT BAR CENTER		180			
23	20	DEDICATED RECEPT - BACK STAGE LIGHT BAR SOUTH			180		
25	20	DEDICATED RECEPT IN C11 FOR NETWORK PANEL	180				
27	20	DEDICATED RECEPT IN C11 FOR UPS	180				
29	30	SPARE	0				
31	20	PROJECTOR RECEPT (UP HIGH)		500			
35	20	SPACE	0		0		
37	20	SPACE	0		0		
39	20	SPACE	0		0		
41	20	SPACE	0		0		
43	20	SPACE	0		0		
45	20	SPACE	0		0		
47	20	SPACE	0		0		
49	20	SPACE	0		0		
51	20	SPACE	0		0		
53	20	SPACE	0		0		
55	20	SPACE	0		0		
57	20	SPACE	0		0		
59	20	SPACE	0		0		
61	20	SPACE	0		0		
63	20	SPACE	0		0		
65	20	SPACE	0		0		
67	20	SPACE	0		0		
69	20	SPACE	0		0		
71	20	SPACE	0		0		
2	20	L6-20 RECEPT - CATWALK NORTH	550.5				
4	-	L6-20 RECEPT - CATWALK CENTER-NORTH		550.5			
6	20	L6-20 RECEPT - CATWALK CENTER-SOUTH			917.5		
8	-	L6-20 RECEPT - CATWALK SOUTH	917.5				
10	20	L6-20 RECEPT - FRONT STAGE LIGHT BAR NORTH		1101			
12	-	L6-20 RECEPT - FRONT STAGE LIGHT BAR CENTER-NORTH			1101		
14	20	L6-20 RECEPT - FRONT STAGE LIGHT BAR CENTER-SOUTH	550.5				
16	-	L6-20 RECEPT - FRONT STAGE LIGHT BAR SOUTH		550.5			
18	20	L6-20 RECEPT - MIDDLE STAGE LIGHT BAR NORTH	600				
20	-	L6-20 RECEPT - MIDDLE STAGE LIGHT BAR CENTER-NORTH			600		
22	20	L6-20 RECEPT - MIDDLE STAGE LIGHT BAR CENTER-SOUTH	600				
24	-	L6-20 RECEPT - MIDDLE STAGE LIGHT BAR SOUTH		600			
26	20	L6-20 RECEPT - BACK STAGE LIGHT BAR NORTH	180				
28	-	L6-20 RECEPT - BACK STAGE LIGHT BAR CENTER-NORTH		180			
30	20	L6-20 RECEPT - BACK STAGE LIGHT BAR CENTER-SOUTH	180				
32	-	L6-20 RECEPT - BACK STAGE LIGHT BAR SOUTH		180			
34	20	L6-20 RECEPT - BACK STAGE LIGHT BAR NORTH	180				
36	-	L6-20 RECEPT - BACK STAGE LIGHT BAR CENTER-NORTH		180			
38	20	L6-20 RECEPT - BACK STAGE LIGHT BAR CENTER-SOUTH	180				
40	-	L6-20 RECEPT - BACK STAGE LIGHT BAR SOUTH		180			
42	20	L6-20 RECEPT - BACK STAGE LIGHT BAR NORTH	180				
44	-	L6-20 RECEPT - BACK STAGE LIGHT BAR CENTER-NORTH		180			
46	20	L6-20 RECEPT - BACK STAGE LIGHT BAR CENTER-SOUTH	180				
48	-	L6-20 RECEPT - BACK STAGE LIGHT BAR SOUTH		180			
50	20	L6-20 RECEPT - BACK STAGE LIGHT BAR NORTH	180				
52	-	L6-20 RECEPT - BACK STAGE LIGHT BAR CENTER-NORTH		180			
54	20	L6-20 RECEPT - BACK STAGE LIGHT BAR CENTER-SOUTH	180				
56	-	L6-20 RECEPT - BACK STAGE LIGHT BAR SOUTH		180			
58	20	L6-20 RECEPT - BACK STAGE LIGHT BAR NORTH	180				
60	-	L6-20 RECEPT - BACK STAGE LIGHT BAR CENTER-NORTH		180			
62	20	L6-20 RECEPT - BACK STAGE LIGHT BAR CENTER-SOUTH	180				
64	-	L6-20 RECEPT - BACK STAGE LIGHT BAR SOUTH		180			
66	20	SPACE	0		0		
68	20	SPACE	0		0		
70	20	SPACE	0		0		
72	20	SPACE	0		0		
KVA:	18	CONNECTED AMPS:	49.1	PHASE WATTS:	5,819	6,172	5,708

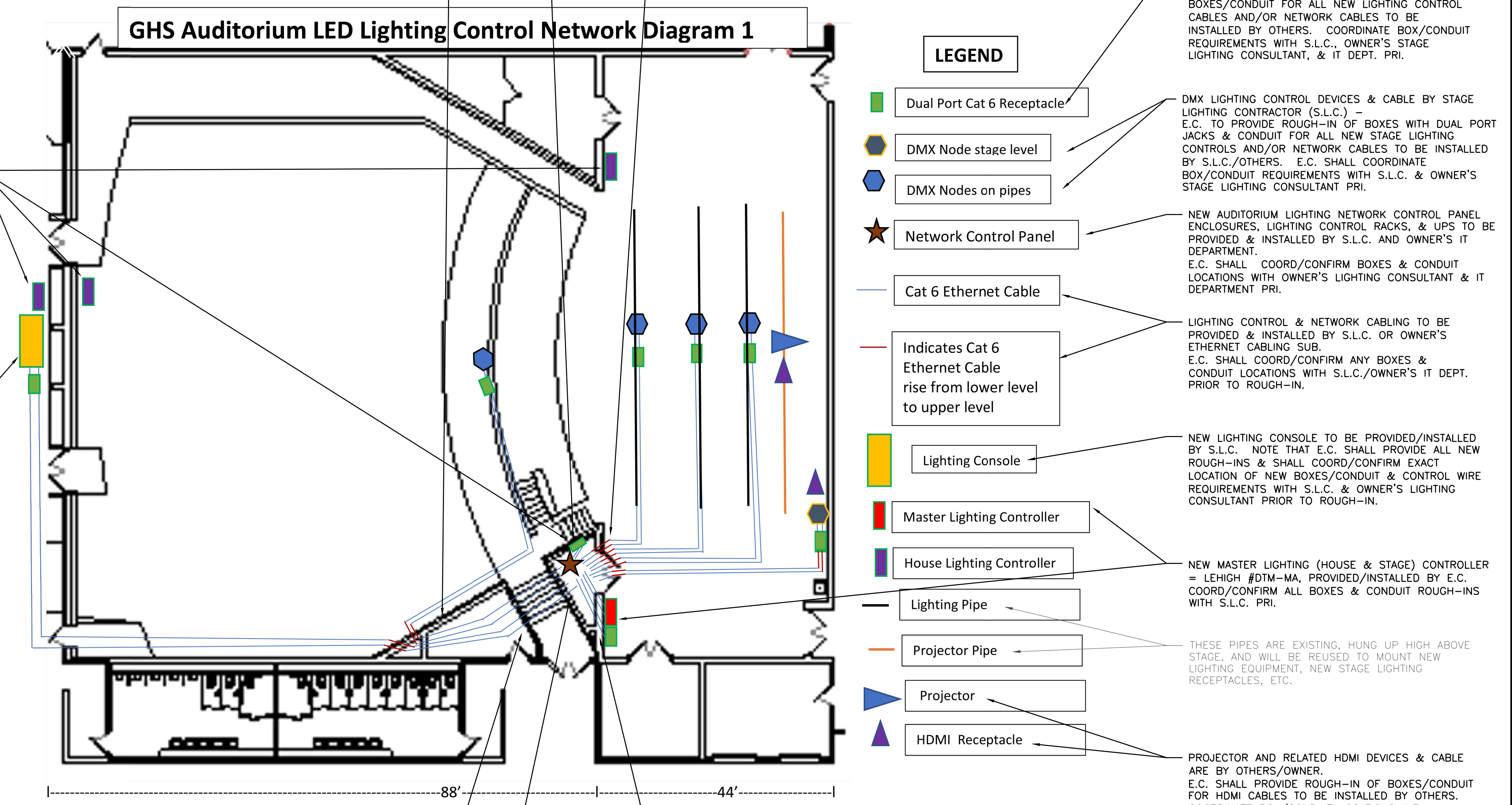
HOUSE LIGHTING IMPROVEMENTS:  
E.C. SHALL PROVIDE/INSTALL ALL NEW HOUSE LIGHTING FIXTURES "HP" AND HOUSE LIGHTING CONTROLS INCLUDING NEW HOUSE DIMMER RACK HD-N (LEHIGH SUNBURST SB2400R-12 DMX ELV - 100A @ 208V/3Ø WITH 12-20A/1P BKRS); NEW MASTER HOUSE & STAGE LIGHTING CONTROLLER = LEHIGH #DTM-MA; NEW HOUSE LIGHTING CONTROL STATIONS (LEHIGH #SDED-604RL) & NEW CONTROL WIRING (BELDEN #9842 + 3-#16 THHN STRD IN CONDUIT) TO/FROM THE NEW HOUSE DIMMER RACK HD-N & THE NEW HOUSE CONTROL STATIONS, ETC... E.C. SHALL COORD/CONFIRM EXACT LOCATION OF NEW BOXES/CONDUIT & CONTROL WIRE REQUIREMENTS WITH S.L.C. & OWNER'S STAGE LIGHTING CONSULTANT PRIOR TO ROUGH-IN.

NEW LIGHTING CONTROL CONSOLE = GRANDMA3 #MA4010511 (PROVIDED/INSTALLED BY S.L.C.). PROVIDE ALL BOX/CONDUIT ROUGH-INS, COORD/CONFIRM REQUIREMENTS WITH S.L.C. & OWNER'S LIGHTING CONSULTANT PRIOR TO ROUGH-IN.

E.C. SHALL PROVIDE TWO (2)-2" CONDUITS (EMT WITH BUSHINGS ON ENDS), SLEEVED THRU WALL OF ROOM C10, FOR LIGHTING CONTROL CABLES. COORDINATE CONDUIT SIZES/LOCATIONS WITH S.L.C. & WITH OWNER'S STAGE LIGHTING CONSULTANTS PRIOR TO ROUGH-IN.

E.C. SHALL PROVIDE TWO (2)-2" CONDUITS (EMT WITH BUSHINGS ON ENDS), SLEEVED THRU WALL OF ROOM C11, FOR LIGHTING CONTROL CABLES TO BE INSTALLED BY OTHERS. COORDINATE CONDUIT SIZES/LOCATIONS WITH S.L.C. & OWNER'S IT DEPT. PRIOR TO ROUGH-IN.

E.C. SHALL PROVIDE FOUR (4)-2" CONDUITS (EMT WITH BUSHINGS ON ENDS), SLEEVED THRU WALL OF ROOM C11, FOR LIGHTING CONTROL CABLES TO BE INSTALLED BY OTHERS. COORDINATE CONDUIT SIZES/LOCATIONS WITH S.L.C. & OWNER'S IT DEPT. PRIOR TO ROUGH-IN.



E.C. SHALL PROVIDE TWO (2)-2" CONDUITS (EMT WITH BUSHINGS ON ENDS), SLEEVED THRU WALL OF ROOM C10, FOR LIGHTING CONTROL CABLES TO BE INSTALLED BY OTHERS. COORDINATE CONDUIT SIZES/LOCATIONS WITH S.L.C. & OWNER'S LIGHTING CONSULTANT PRIOR TO ROUGH-IN.

E.C. SHALL PROVIDE TWO (2)-2" CONDUITS (EMT WITH BUSHINGS ON ENDS), SLEEVED THRU WALL OF ROOM C11, FOR LIGHTING CONTROL CABLES TO BE INSTALLED BY OTHERS. COORDINATE CONDUIT SIZES/LOCATIONS WITH S.L.C. & OWNER'S IT DEPT. PRIOR TO ROUGH-IN.

