

Addendum No. 2
Merrill Virtual Learning Center
Berrien Springs Public Schools

29 December 2020

This addendum forms a part of the Contract Documents and modifies the original Bidding Documents (PROJECT MANUAL dated **07 December 2020**). Please acknowledge receipt of this Addendum when submitting your bid. This Addendum has been distributed to the plan holders of record only. It is the bidder's responsibility to distribute Addendum information to subcontractors and material suppliers. This Addendum reflects modifications from the Owner, Architect, and Bidders.

ATTACHMENTS

1. Updated Pre-Bid Sign-In Sheet / Plan Holders List
2. Revised Bid Form
3. Pre-Bid Meeting Agenda
4. Spec section 081213 Hollow Metal Frames
5. Spec section 081416 Flush Wood Doors
6. Drawing sheet A1.1
7. Drawing sheet A1.2
8. Drawing sheet E1.0

GENERAL / CLARIFICATION

1. Bids may be submitted electronically, via email. Bids must be received no later than 11:00 AM on January 5, 2021. To allow time for processing and printing, please email bids as early as possible. A PDF containing all required bid documents may be emailed to Ellen Hasse at ehasse@homeoftheshamrocks.org. Please combine individual PDFs into one document.
2. Bidders are required to submit the revised Bid Form (attached).
3. Alternate A-1 has been added: bidders are required to provide costs for 2" painted hollow metal door and interior window frames in lieu of wood frames, and pre-finished solid wood flush doors in lieu of painted solid wood 6-panel doors at the following rooms: 101, 102, 103, 105 (frame only), 106, 107, 108, and 109. Door frame 109 requires a 4" head. Refer to door and frame specifications.
4. The restroom exhaust fans should be interlocked with the light switches.
5. All new stud walls will be constructed with 16 gage metal studs.
6. All new walls shall be rated per the detail on sheet A1.1.
7. All floors in the building are concrete slab.
8. Hallway 104 and Storage 109 have concrete floors that will receive an epoxy resin finish. Refer to specification section 096723.
9. An on-site temporary shower is not required for this project.
10. An engineering survey is not required for the two new door openings in the existing CMU walls.

11. The ceiling in Classroom 100 is a 2 x 4 lay-in system with USG Radar Illusion panels; refer to Reflected Ceiling Plan sheet A1.2, and Room Finish Legend sheet A1.3. Lighting in this room will be suspended from the underside of the roof deck (approximately 12'-0" A.F.F.).
12. All mechanical and roof work will be performed under separate contracts. The awarded bidder will be required to coordinate their work with the HVAC and roof contractors.
13. The existing 200amp electrical panel (LRP-A) should be reused unless a new one is required per the current electrical code.
14. Any existing electrical equipment not needed for this project shall be removed by the electrical contractor.
15. MC cable (metal clad cable as defined by the National Electrical Code) may be used for branch circuits. Armored cable is not acceptable.
16. Conference Room 103 contains an existing 12" x 12" return in the concrete floor, as noted on sheet M1.0. This return is functional; there will not be a ceiling return in this room.
17. The awarded bidder will be required to supply one (1) 60" x 36" full color vinyl (banner style) job sign to be hung in the large windows on Midland Street. The architect will provide a layout after the project has been awarded.

DRAWINGS

1. Sheet A1.1 Demolition and Construction Plans:
 - a. The new door at Storage 109 should be marked with Construction Keynote #7; 8 x 8 masonry lintel, (2) #5 @ bottom.
 - b. The east wall of the Kitchenette will be furred out with 3-5/8" metal studs (16 ga.) and 5/8" type "X" drywall to accommodate recessed electrical boxes.
2. Sheet A1.2 Reflected Ceiling Plan and Toilet Room Plans: Install five (5) ceiling mounted smoke detectors in locations shown on plan. Detectors must be hardwired with battery backup and interconnected to produce a building-wide alarm. Mfr.: First Alert or equal. A fire alarm system is not required.
3. E1.0 Electrical Power Plan:
 - a. The electrical panel box should be labeled LRP-A as shown on the riser diagram, sheet A2.0.
 - b. The electrical outlet for the wall-mounted TV in Classroom 100 should be surface mounted.
 - c. Power Key Note #4 should appear in Toilet Rooms 106 and 107 at the exhaust fans (EF-1).
 - d. Classroom 100 power poles should be aluminum and divided to separate power and low voltage wiring: Hubbell/Bryant or equal. Electrical contractor shall provide and install power poles and run electrical wiring. Low voltage wiring will be installed by others.
 - e. Power/data raceway for Classroom 100 walls shall be Wiremold 4000 Series, provided and installed by electrical contractor. Low voltage wiring will be installed by others.
 - f. Electrical contractor is responsible for installing flexible conduit and power/data boxes at computer tables. Owner is responsible for running data cable to tables. Table mfr./model: National Business Furniture, model number 46289 (nationalbusinessfurniture.com)

END OF ADDENDUM NO. 2

Updated 12/28/20



NAME	COMPANY	PHONE	EMAIL
Tony Leininger	CARMI Design Group	269-663-5073	tony@carmi.biz
Jim Crowe	Servico Contracting	248-318-6429	jim@servicocontracting.com
Daniel Emmenecker	J.R. Heineman	989-753-8483	dan@jrheineman.com
Duane Berney	Cre8tive Construction	810-263-0074	dberney@creative-construction.us (not bidding)
Greg Vasold	Wobig Construction	989-752-1294	gvasold_wobig@aol.com
Garth Bergman	Gerald Bergman, Inc.	989-754-6545	geraldbergmaninc@sbcglobal.net
Tom Van Paris	Smillie Plumbing & Heating	989-737-5678	tomvanparis@smillie.us
Brett Fales	TRC (G.C.)	989-513-7528	bfales@trccompany.com
Jon Robinette	TRC (Plumbing)	989-513-2570	jrobinette@trccompany.com
Kevin Mann	Mann's Painting	989-330-5850	mannspainting@frontier.com
Steve Lashuay	Lashuay Refrigeration	989-859-9798	lashuayrefrigeration@gmail.com
Tom Neuenfeldt	O'Keefe Electric	989-832-5338	okeefeelectrictom@yahoo.com
Jason Swincicki	AC Klopf	989-754-0403	jswincicki@acklopf.com
Jeremy Snyder	Great Lakes Bay Construction	989-294-9949	jeremy@glbconstructioninc.com
Nick Batterbee	Master Electric, Inc.	989-426-9860	nickb@masterelectricinc.net
Ryan Gnatkowski	Standard Tile	989-792-0341	pat@standardtile1.com
Trevette Cochran-Moore	Industrial Demolition Services	810-449-5655	trevettecmoore@yahoo.com
Jeremy Smith	JE Johnson	989-835-6671	jeremys@jejohnson.com

BID FORM

PROJECT: **Merrill Virtual Learning Center** OWNER: **Berrien Springs Public Schools**
One Sylvester Avenue
Berrien Springs, MI 49103

PROPOSAL FROM: _____
Company Name

Address

City, State, ZIP

CONTRACT NO. 1 – Merrill Virtual Learning Center

Base Bid

_____ \$ _____ Base Bid
Written Amount

Alternate A-1 (hollow metal interior door / window frames, solid wood flush doors)

_____ \$ _____ (Add/Deduct)
Written Amount

Voluntary Alternate (if provided)

Description

_____ \$ _____ (Add/Deduct)
Written Amount

- | | | | | | | |
|---|-----|--------------------------|-----|--------------------------|-------|--------------------------|
| 5% BID BOND: | YES | <input type="checkbox"/> | NO | <input type="checkbox"/> | | |
| List of warranted projects: | YES | <input type="checkbox"/> | NO | <input type="checkbox"/> | | |
| Iran Economic Sanctions Act Certification | YES | <input type="checkbox"/> | NO | <input type="checkbox"/> | | |
| Familial Disclosure Statement | YES | <input type="checkbox"/> | NO | <input type="checkbox"/> | | |
| Written Narrative for Inclusions / Exclusions | YES | <input type="checkbox"/> | NO | <input type="checkbox"/> | | |
| Summary Schedule | YES | <input type="checkbox"/> | NO | <input type="checkbox"/> | | |
| Acknowledge Receipt of
ADDENDUM NO.: | ONE | <input type="checkbox"/> | TWO | <input type="checkbox"/> | THREE | <input type="checkbox"/> |

SUBMITTED BY:

Signature

Date: _____, 2021

Printed

Title

MA

Meeting Agenda

Berrien Springs Public Schools
Merrill Virtual Learning Center
Pre-Bid Meeting
12.15.2020 @ 11:00 AM

1. Introductions
 - Kristi Teall, Executive Director, Success Virtual Learning
 - Tony Leininger, CARMI

2. Bidding Schedule
 - Addendum 1 Release Friday, 12.11.20
 - Addendum 2 Deadline Tuesday, 12.29.20 [end of day]
 - Addendum 2 Release Wednesday, 12.30.20
 - Bids Due Tuesday 1.5.21 @ 11:00 AM

3. Construction Schedule
 - Work is scheduled to commence by January 15, 2021 and be 100% complete by April 15, 2021.
 - Will be under separate contract; the successful bidder for this contract will be responsible to coordinate separate contracts

4. Summary of Work:
 - Renovations to an existing 4,250 SF building include selective demolition, new interior partition walls, interior windows and doors, ceiling systems, lighting, painting, vinyl, epoxy, and carpet flooring, and mechanical, plumbing, and electrical work.

5. Instructions to Bidders
 - Comparable experience and ability to adhere to schedule
 - Project is not tax exempt
 - Bid Bond, Payment and Performance bonds required if bid exceeds \$50,000.00
 - This is not a prevailing wage scale project
 - AIA contract and related documents to be generated by CARMI.
 - Project plan Township Code Authority; received verbal approval

6. Bid Form
 - Single contract
 - Base bid
 - Voluntary alternates
 - 5% bid bond
 - Familial Relationship Statement
 - Iran Disclosure Statement
 - Addendum acknowledgement

7. Corrections / Addendum Discussion
 - Discuss known addendum questions

8. Owner Requirements

9. Document Distribution (Electronic)

**SECTION 081213
HOLLOW METAL FRAMES**

PART 1 - GENERAL

1.1 SUMMARY

- A. Section includes:
 - 1. Interior standard steel frames.
 - 2. Interior custom hollow-metal frames.

1.2 DEFINITIONS

- A. Minimum Thickness: Minimum thickness of base metal without coatings according to NAAMM-HMMA 803 or SDI A250.8.

1.3 ACTION SUBMITTALS

- A. Product Data: For each type of product.
- B. Shop Drawings: Include elevations, frame profiles, metal thicknesses, and wall opening conditions.
- C. Schedule: Prepared by or under the supervision of supplier, using same reference numbers for details and openings as those on Drawings.

1.4 INFORMATIONAL SUBMITTALS

- A. Product test reports.

PART 2 - PRODUCTS

2.1 MANUFACTURERS

- A. Available Manufacturers: Subject to compliance with requirements, manufacturers offering products that may be incorporated into the Work include, but are not limited to, the following:
 - 1. Ceco Door Products; an ASSA ABLOY Group Company.
 - 2. CURRIES Company; an ASSA ABLOY Group Company.
 - 3. Republic Doors and Frames, an Allegion Company.
 - 4. Steelcraft; an Allegion Company.

2.2 PERFORMANCE REQUIREMENTS

- A. Fire-Rated Assemblies: Complying with NFPA 80 and listed and labeled by a qualified testing agency acceptable to authorities having jurisdiction for fire-protection ratings indicated, based on testing at positive pressure according to NFPA 252 or UL 10C.

1. Smoke- and Draft-Control Assemblies: Provide assemblies with gaskets listed and labeled for smoke and draft control by a qualified testing agency acceptable to authorities having jurisdiction, based on testing according to UL 1784 and installed in compliance with NFPA 105.
- B. Fire-Rated, Borrowed-Lite Assemblies: Complying with NFPA 80 and listed and labeled by a qualified testing agency acceptable to authorities having jurisdiction, for fire-protection ratings indicated, based on testing according to NFPA 257 or UL 9.

2.3 STANDARD STEEL FRAMES

- A. Construct hollow-metal frames to comply with standards indicated for materials, fabrication, hardware locations, hardware reinforcement, tolerances, and clearances, and as specified.
- B. Interior Frames: SDI A250.8. At locations indicated in the Door and Frame Schedule.
 1. Materials: Uncoated steel sheet, minimum thickness of 0.042 inch
 2. Sidelite and Transom Frames: Fabricated from same thickness material as adjacent door frame.
 3. Construction: Face welded
 4. Exposed Finish: Prime.

2.4 FRAME ANCHORS

- A. Jamb Anchors:
 1. Type: Anchors of minimum size and type required by applicable door and frame standard, and suitable for performance level indicated.
 2. Quantity: Minimum of three anchors per jamb, with one additional anchor for frames with no floor anchor. Provide one additional anchor for each 24 inches (610 mm) of frame height above 7 feet (2.1 m).
 3. Postinstalled Expansion Anchor: Minimum 3/8-inch- (9.5-mm-) diameter bolts with expansion shields or inserts, with manufacturer's standard pipe spacer.
- B. Floor Anchors: Provide floor anchors for each jamb and mullion that extends to floor.
- C. Floor Anchors for Concrete Slabs with Underlayment: Adjustable-type anchors with extension clips, allowing not less than 2-inch (51-mm) height adjustment. Terminate bottom of frames at top of underlayment.
- D. Material: ASTM A 879/A 879M, Commercial Steel (CS), 04Z (12G) coating designation; mill phosphatized.

2.5 MATERIALS

- A. Cold-Rolled Steel Sheet: ASTM A 1008/A 1008M, Commercial Steel (CS), Type B; suitable for exposed applications.
- B. Hot-Rolled Steel Sheet: ASTM A 1011/A 1011M, Commercial Steel (CS), Type B; free of scale, pitting, or surface defects; pickled and oiled.
- C. Metallic-Coated Steel Sheet: ASTM A 653/A 653M, Commercial Steel (CS), Type B.

- D. Inserts, Bolts, and Fasteners: Hot-dip galvanized according to ASTM A 153/A 153M.
- E. Power-Actuated Fasteners in Concrete: Fabricated from corrosion-resistant materials.
- F. Glazing: Comply with requirements in Section 088000 "Glazing."

2.6 FABRICATION

- A. Hollow-Metal Frames: Fabricate in one piece except where handling and shipping limitations require multiple sections. Where frames are fabricated in sections, provide alignment plates or angles at each joint, fabricated of metal of same or greater thickness as frames.
 - 1. Sidelite and Transom Bar Frames: Provide closed tubular members with no visible face seams or joints, fabricated from same material as door frame. Fasten members at crossings and to jambs by welding.
 - 2. Provide countersunk, flat- or oval-head exposed screws and bolts for exposed fasteners unless otherwise indicated.
 - 3. Door Silencers: Except on weather-stripped frames, drill stops to receive door silencers as follows. Keep holes clear during construction.
 - a. Single-Door Frames: Drill stop in strike jamb to receive three door silencers.
 - b. Double-Door Frames: Drill stop in head jamb to receive two door silencers.
- B. Hardware Preparation: Factory prepare hollow-metal frames to receive templated mortised hardware, and electrical wiring; include cutouts, reinforcement, mortising, drilling, and tapping according to SDI A250.6, the Door Hardware Schedule, and templates.
 - 1. Reinforce frames to receive nontemplated, mortised, and surface-mounted door hardware.
 - 2. Comply with BHMA A156.115 for preparing hollow-metal frames for hardware.
- C. Glazed Lites: Provide stops and moldings around glazed lites where indicated. Form corners of stops and moldings with butted hairline joints.
 - 1. Multiple Glazed Lites: Provide fixed and removable stops and moldings so that each glazed lite is capable of being removed independently.
 - 2. Provide fixed frame moldings on outside of exterior and on secure side of interior frames. Provide loose stops and moldings on inside of hollow-metal frames.
 - 3. Coordinate rabbet width between fixed and removable stops with glazing and installation types indicated.
 - 4. Provide stops for installation with countersunk flat- or oval-head machine screws spaced uniformly not more than 9 inches (230 mm) o.c. and not more than 2 inches (51 mm) o.c. from each corner.

2.7 STEEL FINISHES

- A. Prime Finish: Clean, pretreat, and apply manufacturer's standard primer.
 - 1. Shop Primer: SDI A250.10.

PART 3 - EXECUTION

3.1 INSTALLATION

- A. General: Install hollow-metal frames plumb, rigid, properly aligned, and securely fastened in place. Comply with approved Shop Drawings and with manufacturer's written instructions. Comply with SDI A250.11.
- B. Set frames accurately in position; plumbed, aligned, and braced securely until permanent anchors are set. After wall construction is complete, remove temporary braces without damage to completed Work.
 - 1. Where frames are fabricated in sections, field splice at approved locations by welding face joint continuously; grind, fill, dress, and make splice smooth, flush, and invisible on exposed faces. Touch-up finishes.
 - 2. Install frames with removable stops located on secure side of opening.
- C. Fire-Rated Openings: Install frames according to NFPA 80.
- D. Floor Anchors: Secure with postinstalled expansion anchors.
 - 1. Floor anchors may be set with power-actuated fasteners instead of postinstalled expansion anchors if so indicated and approved on Shop Drawings.
- E. Solidly pack mineral-fiber insulation inside frames.
- F. Masonry Walls: Coordinate installation of frames to allow for solidly filling space between frames and masonry with grout or mortar.
- G. In-Place Concrete or Masonry Construction: Secure frames in place with postinstalled expansion anchors. Countersink anchors, and fill and make smooth, flush, and invisible on exposed faces.
- H. Installation Tolerances: Adjust hollow-metal frames to the following tolerances:
 - 1. Squareness: Plus or minus 1/16 inch (1.6 mm), measured at door rabbet on a line 90 degrees from jamb perpendicular to frame head.
 - 2. Alignment: Plus or minus 1/16 inch (1.6 mm), measured at jambs on a horizontal line parallel to plane of wall.
 - 3. Twist: Plus or minus 1/16 inch (1.6 mm), measured at opposite face corners of jambs on parallel lines, and perpendicular to plane of wall.
 - 4. Plumbness: Plus or minus 1/16 inch (1.6 mm), measured at jambs at floor.
- I. Glazing: Comply with installation requirements in Section 088000 "Glazing" and with hollow-metal manufacturer's written instructions.

3.2 CLEANING AND TOUCHUP

- A. Prime-Coat Touchup: Immediately after erection, sand smooth rusted or damaged areas of prime coat and apply touchup of compatible air-drying, rust-inhibitive primer.
- B. Metallic-Coated Surface Touchup: Clean abraded areas and repair with galvanizing repair paint according to manufacturer's written instructions.

- C. Factory-Finish Touchup: Clean abraded areas and repair with same material used for factory finish according to manufacturer's written instructions.
- D. Touchup Painting: Cleaning and touchup painting of abraded areas of paint are specified in painting Sections.

END OF SECTION 081213

**SECTION 081416
FLUSH WOOD DOORS**

PART 1 - GENERAL

1.1 SUMMARY

- A. This Section includes solid-core doors as follows:
 - 1. Doors with wood-veneer faces.
 - 2. Factory machining for hardware.
- B. See Division 8 Section "Glazing" for glass view panels in flush wood doors.

1.2 SUBMITTALS

- A. Product Data: For each type of door.
- B. Shop Drawings: Indicate location, size, and hand of each door; elevation of each kind of door; construction details; location and extent of hardware blocking; mortises, holes, and cutouts; fire ratings; and other pertinent data.
- C. Samples: For each face material and finish.

1.3 QUALITY ASSURANCE

- A. Quality Standard: Comply with AWI's "Architectural Woodwork Quality Standards Illustrated."
- B. Fire-Rated Wood Doors: Doors that are listed and labeled by a testing and inspecting agency acceptable to authorities having jurisdiction, for fire ratings indicated.
 - 1. Test Pressure: After 5 minutes into the test, neutral pressure level in furnace shall be established at 40 inches or less above the sill.

PART 2 - PRODUCTS

2.1 MANUFACTURERS

- A. Available Manufacturers: Subject to compliance with requirements, manufacturers offering products that may be incorporated into the Work include, but are not limited to, the following:
 - 1. Eggers Industries; Architectural Door Division.
 - 2. Oshkosh Architectural Door Co.
 - 3. VT Industries Inc.

2.2 DOOR CONSTRUCTION

- A. Adhesives: Do not use adhesives containing urea formaldehyde.
- B. Particleboard: Do not use particleboard made with binder containing urea-formaldehyde resin.
- C. Doors for Transparent Finish:
 - 1. Grade: Premium, with Grade AA faces.
 - 2. Species and Cut: Red Oak, rotary cut.
 - 3. Match between Veneer Leaves: Book match.

4. Assembly of Veneer Leaves on Door Faces: Balance match.
5. Pair and Set Match: Provide for doors hung in same opening or separated only by mullions.

D. Interior Veneer-Faced Solid-Core Doors:

1. Core: Either glued block or structural composite lumber.
2. Construction: Five or seven plies with stiles and rails bonded to core, then entire unit abrasive planed before veneering.

E. Fire-Rated Doors:

1. Construction: Construction and core specified above for type of face indicated or manufacturer's standard mineral-core construction as needed to provide fire rating indicated.
2. Edge Construction: Intumescent seals concealed by outer stile matching face veneer, and laminated backing for improved screw-holding capability and split resistance.

F. Wood-Veneered Beads for Light Openings in Fire Doors: Manufacturer's standard wood-veneered noncombustible beads matching veneer species of door faces and approved for use in doors of fire rating indicated.

2.3 FACTORY FINISHING

A. Comply with referenced quality standard for factory finishing.

1. Complete fabrication, including fitting doors for openings and machining for hardware that is not surface applied, before finishing.
2. Finish faces, all four edges, edges of cutouts, and mortises.
3. Stains and fillers may be omitted on top and bottom edges, edges of cutouts, and mortises.

B. Factory finish doors.

C. Transparent Finish:

1. Finish: transparent conversion varnish AWI TR-4; WDMA #3 or transparent catalyzed polyurethane AWI TR-6; WDMA #5 System. Finish shall be:
 - a. Manufacturer's standard finish stain.
2. Effect: Filled finish.
3. Sheen: Satin.

2.4 FABRICATION

G. Fabricate doors in sizes indicated for Project-site fitting.

H. Factory machine doors for hardware that is not surface applied.

I. Openings: Cut and trim openings through doors to comply with applicable requirements of referenced standards for kind(s) of door(s) required.

1. Light Openings: Trim openings with moldings of material and profile indicated.

PART 3 - EXECUTION

3.1 INSTALLATION

- A. Install doors to comply with manufacturer's written instructions, referenced quality standard, and as indicated.

1. Install fire-rated doors in corresponding fire-rated frames according to NFPA 80.

- B. Job-Fitted Doors: Align and fit doors in frames with uniform clearances and bevels; do not trim stiles and rails in excess of limits set by manufacturer or permitted for fire-rated doors. Machine doors for hardware. Seal cut surfaces after fitting and machining.

1. Comply with NFPA 80 for fire-rated doors.

END OF SECTION 08211

GENERAL NOTES:

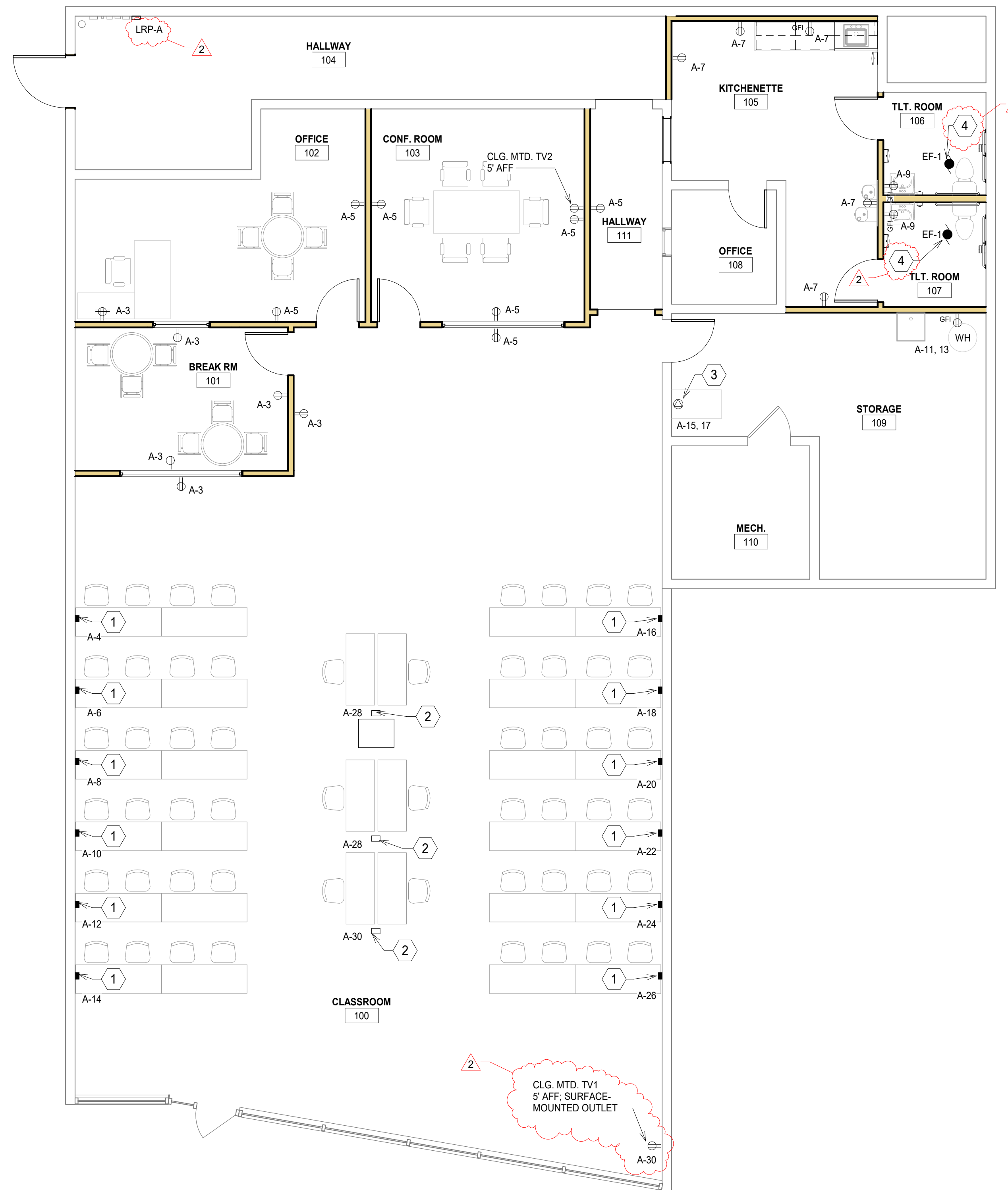
1. ANY PENETRATIONS THROUGH THE ROOF MUST BE FLASHED AND SEALED ACCORDING TO THE WARRANTED MANUFACTURER'S REQUIREMENTS.

GENERAL POWER NOTES:

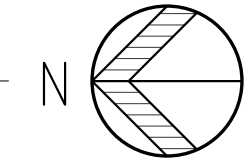
1. ALL ELECTRICAL DEVICES AND ASSOCIATED OUTLET BOXES SHALL BE FLUSH MOUNTED UNLESS OTHERWISE NOTED. ALL CONDUIT AND WIRING SHALL BE CONCEALED WHERE PHYSICALLY POSSIBLE. SURFACE RACEWAY SHALL ONLY BE PERMITTED WHERE NOTED.
2. PROVIDE (1) NO. 10 AWG NEUTRAL CONDUCTOR FOR ANY 20 AMP SINGLE PHASE CIRCUITS SHARING A NEUTRAL IN A SINGLE CONDUIT. WHERE MULTIWIRE BRANCH CIRCUITS ARE USED, PROVIDE SIMULTANEOUS DISCONNECTING MEANS IN PLACE OF SINGLE POLE BREAKERS.
3. PROVIDE AN EQUIPMENT GROUNDING CONDUCTOR WITHIN THE RACEWAYS ALONG WITH PHASE CONDUCTORS FOR ALL FEEDERS AND BRANCH CIRCUITS. CONDUIT IS NOT PERMITTED TO ACT AS AN EQUIPMENT GROUNDING CONDUCTOR UNLESS NOTED. AN ISOLATED GROUND CONDUCTOR (GREEN/WHITE) IS REQUIRED FOR ALL ISOLATED GROUND CIRCUITS.
4. WHEREVER 4 OR MORE CURRENT CARRYING CONDUCTORS ARE INSTALLED IN A SINGLE RACEWAY, E.C. SHALL INCREASE CONDUCTOR SIZE AS REQUIRED FOR DERATING PER NEC 315.B.2.9.
5. GROUND FAULT INTERRUPTING DEVICES SHALL BE INSTALLED IN ACCESSIBLE LOCATIONS AND NOT ALLOWED BEHIND FIXED IN PLACE OR UNMOVABLE EQUIPMENT. REMOTE DEVICES MAY BE REQUIRED.
6. ALL CIRCUITS SHALL USE A MINIMUM OF 12 AWG FOR 20 AMP CIRCUITS UNLESS OTHERWISE NOTED. ELECTRICAL CONTRACTOR SHALL CONFIRM CONDUCTOR AND CONDUIT SIZES FOR VOLTAGE DROP, A MAXIMUM OF 3% FOR BRANCH AND FEEDER, AND 5% OVERALL.
7. COORDINATE WITH OTHER TRADES FOR ANY ELECTRICAL DEVICE LOCATIONS PRIOR TO ROUGH-IN. COMPLY WITH ALL APPLICABLE CODES FOR PROPER MOUNTING HEIGHTS, NFPA, NEC, ADA, ETC.
8. WHERE LOW VOLTAGE DEVICES AND RECEPTACLES ARE SHOWN NEXT TO EACH OTHER, INTALL AS CLOSE AS POSSIBLE; DO NOT SCALE DRAWINGS.
9. ALL "SPECIAL SYSTEMS" WIRING AND DEVICES (IE. TELEPHONE, DATA, TV) SHALL BE PROVIDED AND INSTALLED BY OTHERS UNLESS NOTED ON PLANS OR SPECIFICATIONS. E.C. TO PROVIDE BOXES AND RACEWAYS PER LEGEND AND SPECIFICATIONS. COORDINATE EXACT REQUIREMENTS WITH MANUFACTURER/SUPPLIER.
10. ALL DISCREPANCIES WITH THESE DOCUMENTS SHALL BE BROUGHT TO THE ATTENTION OF THE ENGINEER FOR CLARIFICATION PRIOR TO BIDS. IN OTHERWISE DOING SO, THE ELECTRICAL CONTRACTOR SHALL BE LIABLE FOR ANY REQUIRED REVISIONS.
11. E.C. TO COORDINATE EXACT EQUIPMENTS OF ALL OTHER SYSTEMS WITH MANUFACTURER AND OTHER TRADES PRIOR TO ROUGH-IN AND PURCHASE OF ANY ELECTRICAL EQUIPMENT ASSOCIATED WITH SYSTEM. ANY DISCREPANCIES WITH THIS PLAN AND MANUFACTURER REQUIREMENTS SHALL BE BROUGHT TO THE ATTENTION OF THE ARCHITECT/ENGINEER PRIOR TO PURCHASE OR ELECTRICAL ROUGH-IN OF THIS EQUIPMENT.
12. ALL ITEMS SHOWN ON PLAN ARE NEW UNLESS MARKED AS (E) FOR EXISTING OR (R) FOR RELOCATED.

POWER KEY NOTES:

1. SURFACE MOUNTED POWER/DATA DIVIDED RACEWAY WITH HARDWIRED POWER CONNECTION TO FURNITURE. CONNECT TO CIRCUITS SHOWN.
2. ALUMINUM POWER/DATA DIVIDED POWER POLE, HUBBELL/BRYANT OR EQUAL. CONNECT TO CIRCUIT SHOWN.
3. NEMA L5-30P
4. CONNECT TO LIGHT SWITCH



1 ELECTRICAL POWER PLAN
3/16" = 1'-0"



THE INFORMATION ON THIS SHEET IS THE PROPERTY OF CARMi design group inc. AND MAY NOT BE REPRODUCED WITHOUT WRITTEN CONSENT FROM CARMi design group inc.
Copyright 2020 ©

BERRIEN SPRINGS PUBLIC SCHOOLS

MERRILL VIRTUAL LEARNING CENTER

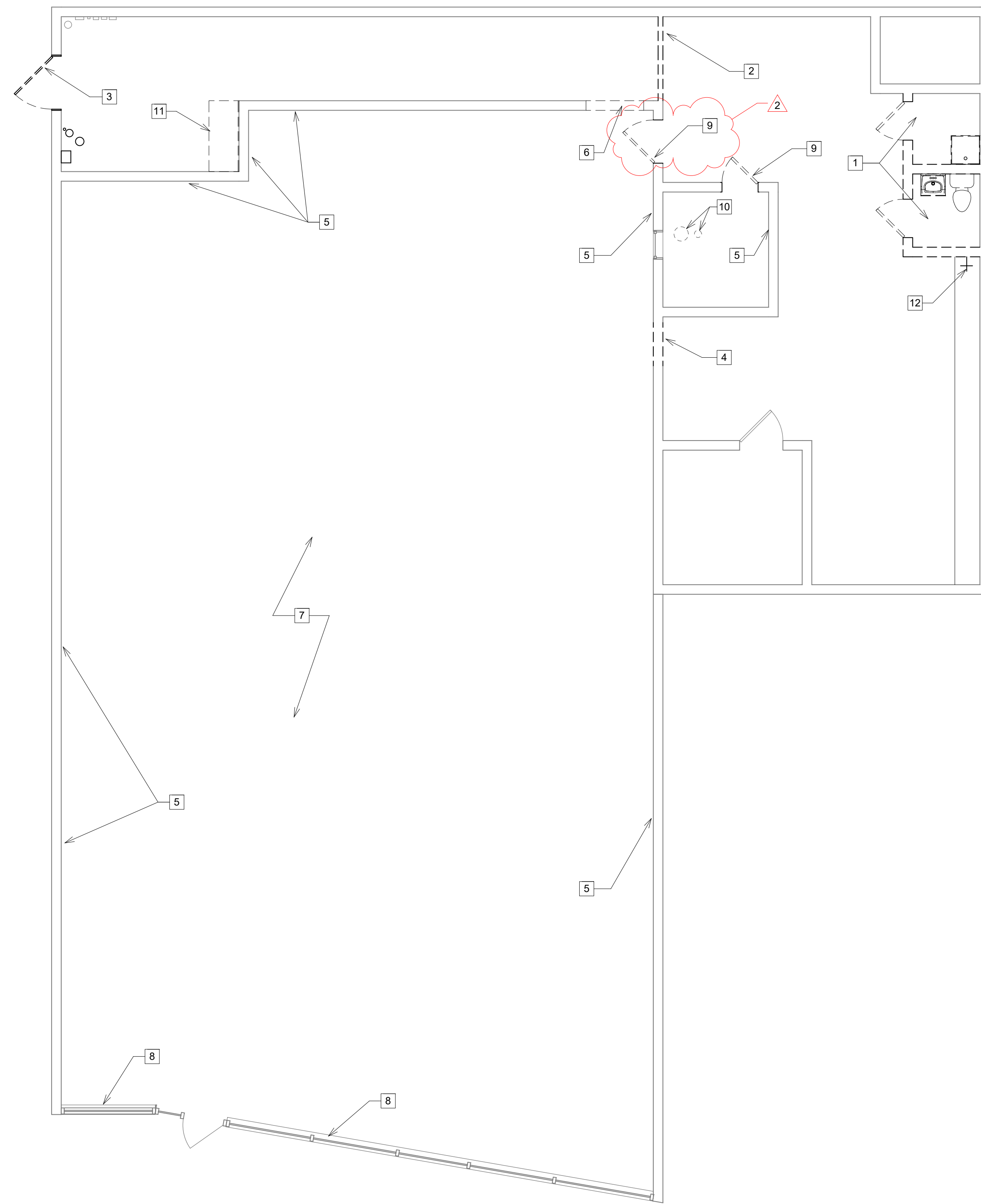
148 N. MIDLAND ST
MERRILL, MICHIGAN

NO.	ISSUED	DATE
2	ADDENDUM 2	12-29-2020

DATE	7 DECEMBER 2020
PROJECT #	2020.007
DRAWN BY	CHECKED BY
Author	Checker

ELECTRICAL POWER PLAN

E1.0



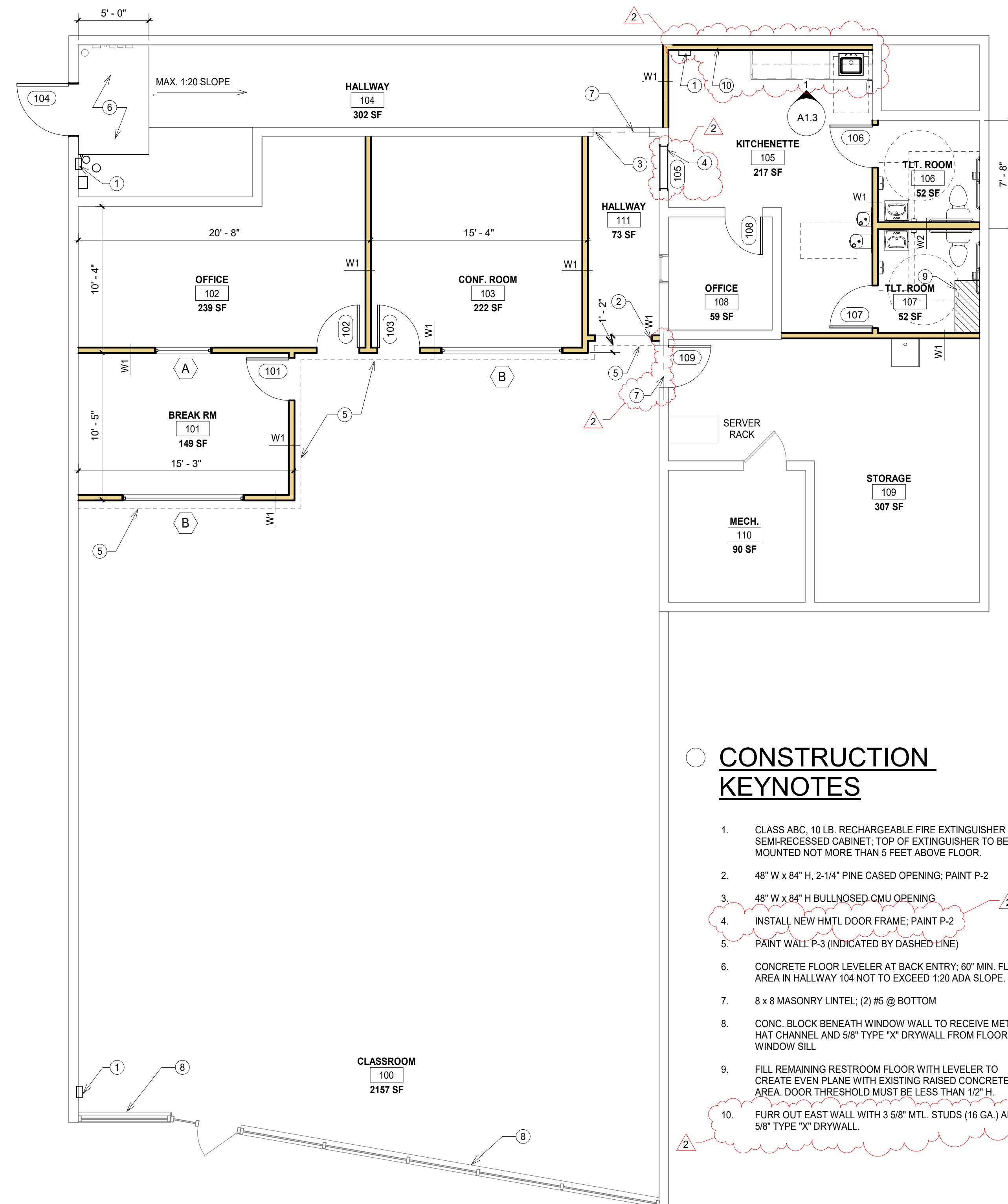
2 DEMOLITION PLAN
3/16" = 1'-0"

GENERAL DEMOLITION NOTES

- VERIFY FIELD CONDITIONS PRIOR TO START OF DEMOLITION / CONSTRUCTION, AND NOTIFY THE ARCHITECT OF ANY DISCREPANCIES. CONFORM TO ALL BUILDING CODES AND EXECUTE WORK ONLY WHICH IS IN CONFORMANCE.
- CONTRACTORS SHALL BE RESPONSIBLE FOR ALL DEMOLITION REQUIRED FOR THE INSTALLATION OF NEW CONSTRUCTION AND AS NECESSARY TO FULFILL THE PURPOSE AND INTENT OF THE FINISHED WORK, WHETHER OR NOT IT IS SPECIFICALLY SHOWN OR NOTED IN THESE DOCUMENTS. THE CONTRACTOR SHALL BE RESPONSIBLE FOR ALL ITEMS CALLED TO BE REMOVED THROUGHOUT THE ENTIRE SET OF DOCUMENTS.
- CONTRACTOR SHALL FIELD INSPECT ALL DEMOLITION WORK PRIOR TO REMOVAL TO INSURE SUCH REMOVAL DOES NOT IMPAIR STRUCTURAL INTEGRITY OF THE EXISTING BUILDING. IF THE INSPECTION INDICATES THAT THE STRUCTURAL INTEGRITY MAY BE IMPAIRED, NOTIFY THE ARCHITECT IMMEDIATELY.
- PROTECT ALL PORTIONS OF THE EXISTING BUILDING TO REMAIN DURING DEMOLITION / CONSTRUCTION. THE GENERAL CONTRACTOR IS RESPONSIBLE FOR ANY AND ALL DAMAGES HE OR HIS SUB-CONTRACTORS CAUSE.
- ALL CONSTRUCTION AREAS, REMOVAL TRAFFIC PATTERN AREAS AND ASSOCIATED WORK AREAS SHALL BE KEPT CLEAN OF DEBRIS BY THE CONTRACTORS DAILY.
- UNLESS NOTED OTHERWISE, ALL DEMOLITION MATERIAL BECOMES THE PROPERTY OF THE CONTRACTORS AND IS TO BE REMOVED FROM THE PROPERTY, IN A LEGAL MANNER. THE OWNER RESERVES THE RIGHT AND SHALL BE GIVEN THE OPPORTUNITY TO CLAIM ITEMS WHETHER OR NOT THOSE ITEMS WERE SPECIFICALLY NOTED FOR REMOVAL OR RELOCATION.
- GENERAL CONTRACTOR RESPONSIBLE FOR PATCHING ALL REMOVED ELECTRICAL OUTLETS. ELECTRICAL CONTRACTOR TO PROVIDE GENERAL CONTRACTOR WITH QUANTITIES.
- REMOVE EXISTING FINISHES AS REQUIRED TO INSTALL NEW FINISHES. PREPARE SURFACES TO RECEIVE NEW FINISH AS PER MANUFACTURER'S PRINTED INSTRUCTIONS. SEE FINISH SCHEDULE FOR NEW FINISHES.
- SEE PLUMBING PLANS FOR NECESSARY CONCRETE SLAB REMOVAL TO FACILITATE NEW UNDER-FLOOR SANITARY PIPING.

DEMOLITION KEYNOTES

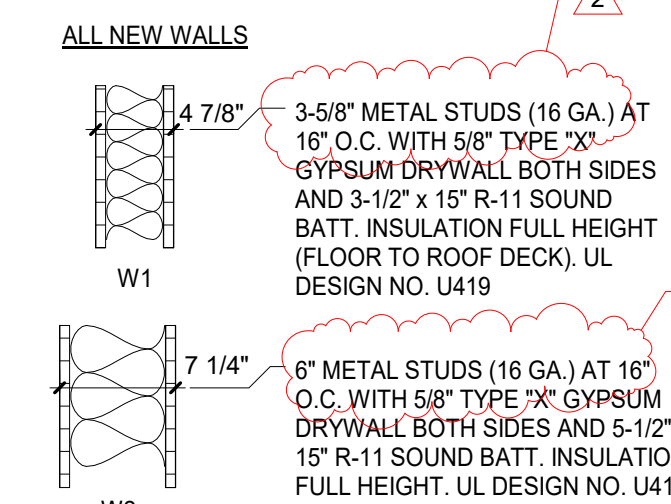
- REMOVE CMU PARTITIONS, DOORS, CEILING, FLOORING, PLUMBING FIXTURES AND RELATED ITEMS.
- REMOVE STUD WALL, DOOR / FRAME, AND TRANSOM
- REMOVE EXISTING DOOR; LEAVE FRAME IN PLACE.
- REMOVE PORTION OF CMU WALL TO CREATE OPENING FOR NEW 36" x 84" DOOR / FRAME; SEE LINTEL UNDER CONSTRUCTION NOTES.
- REMOVE WOOD FURRING STRIPS AND ANY MATERIAL ATTACHED TO STRIPS. FILL HOLES IN CMU AND PREPARE WALLS FOR PAINTING.
- REMOVE PORTION OF CMU WALL TO CREATE OPENING FOR NEW 48" x 84" DOOR / FRAME; SEE LINTEL UNDER CONSTRUCTION NOTES.
- REMOVE EXISTING FLOORING, LIGHTING, AND CEILING SYSTEM. PREPARE SUB-FLOOR TO RECEIVE NEW FLOORING.
- REMOVE PEG BOARD COVERING LOWER WINDOWS AND PLYWOOD COVERING UPPER WINDOWS.
- REMOVE EXISTING DOOR AND FRAME
- REMOVE EXHAUST FAN AND LIGHT FIXTURE.
- REMOVE BUILT-IN COUNTER/WORK BENCH
- REMOVE HOSE BIB, DISCONNECT, AND CAP



1 CONSTRUCTION PLAN
3/16" = 1'-0"

GENERAL CONSTRUCTION NOTES

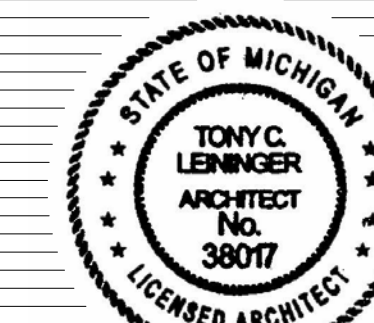
- TOP OF SLAB ELEVATION 100.0'
- DIMENSIONS SHOWN ARE, UNLESS NOTED OTHERWISE,
 - TO FACE OF MASONRY
 - TO FACE OF FRAME WALLS
- TYPICAL WALL CONSTRUCTION:
 - INTERIOR WALLS (U.N.O.):
 - 3-5/8" METAL STUD AT 16" O.C. WITH 1/2" GYPSUM BOARD EACH SIDE (TYPICAL); 6" METAL STUD WHERE SHOWN
 - SOUND INSULATION - FULL HEIGHT
- UNLESS NOTED OTHERWISE, ALL INTERIOR PARTITION FRAMING AND INSULATION SHALL EXTEND TO ROOF DECK.
- PROVIDE ADEQUATE BLOCKING WHERE REQUIRED FOR ANCHORAGE OF SHELVING, GRAB BARS, HANDRAIL, COUNTERTOPS, SINK, ETC.
- ALL SIGNAGE TO BE FURNISHED AND INSTALLED BY OWNER UNLESS NOTED OTHERWISE.
- ALL NEW DRYWALL TO RECEIVE LEVEL 5 FINISH.
- G.C. RESPONSIBLE FOR VERIFYING EXISTING OVERALL DIMENSIONS; NOTIFY ARCHITECT OF DISCREPANCIES
- SECURITY SYSTEM AND FIRE ALARM SYSTEM BY OWNER.



PARTITION TYPES
NOT TO SCALE

CONSTRUCTION KEYNOTES

- CLASS ABC, 10 LB. RECHARGEABLE FIRE EXTINGUISHER IN SEMI-RECESSED CABINET; TOP OF EXTINGUISHER TO BE MOUNTED NOT MORE THAN 5 FEET ABOVE FLOOR.
- 48" W x 84" H, 2-1/4" PINE CASED OPENING; PAINT P-2
- 48" W x 84" H BULLNOSED CMU OPENING
- INSTALL NEW HMTL DOOR FRAME, PAINT P-2
- PAINT WALL P-3 (INDICATED BY DASHED LINE)
- CONCRETE FLOOR LEVELER AT BACK ENTRY; 60" MIN. FLAT AREA IN HALLWAY 104 NOT TO EXCEED 1:20 ADA SLOPE.
- 8 x 8 MASONRY LINTEL; (2) #5 @ BOTTOM
- CONC. BLOCK BENEATH WINDOW WALL TO RECEIVE METAL HAT CHANNEL AND 5/8" TYPE "X" DRYWALL FROM FLOOR TO WINDOW SILL
- FILL REMAINING RESTROOM FLOOR WITH LEVELER TO CREATE EVEN PLANE WITH EXISTING RAISED CONCRETE AREA. DOOR THRESHOLD MUST BE LESS THAN 1/2" H.
- FURR OUT EAST WALL WITH 3 5/8" MTL. STUDS (16 GA.) AND 5/8" TYPE "X" DRYWALL.



THE INFORMATION ON THIS SHEET IS THE PROPERTY OF CARMi design group inc. AND MAY NOT BE REPRODUCED WITHOUT WRITTEN CONSENT FROM CARMi design group inc.
Copyright 2020 ©

BERRIEN SPRINGS PUBLIC SCHOOLS

MERRILL VIRTUAL LEARNING CENTER

148 N. MIDLAND ST
MERRILL, MICHIGAN

NO.	ISSUED	DATE
2	ADDENDUM 2	12-29-2020

DATE	7 DECEMBER 2020
PROJECT #	2020.007
DRAWN BY	CEDG
CHECKED BY	TCL

DEMO & CONST. PLANS

A1.1



THE INFORMATION ON THIS SHEET IS THE PROPERTY OF CARMI design group inc. AND MAY NOT BE REPRODUCED WITHOUT WRITTEN CONSENT FROM CARMI design group inc.
 Copyright 2020 ©

BERRIEN SPRINGS PUBLIC SCHOOLS

MERRILL VIRTUAL LEARNING CENTER

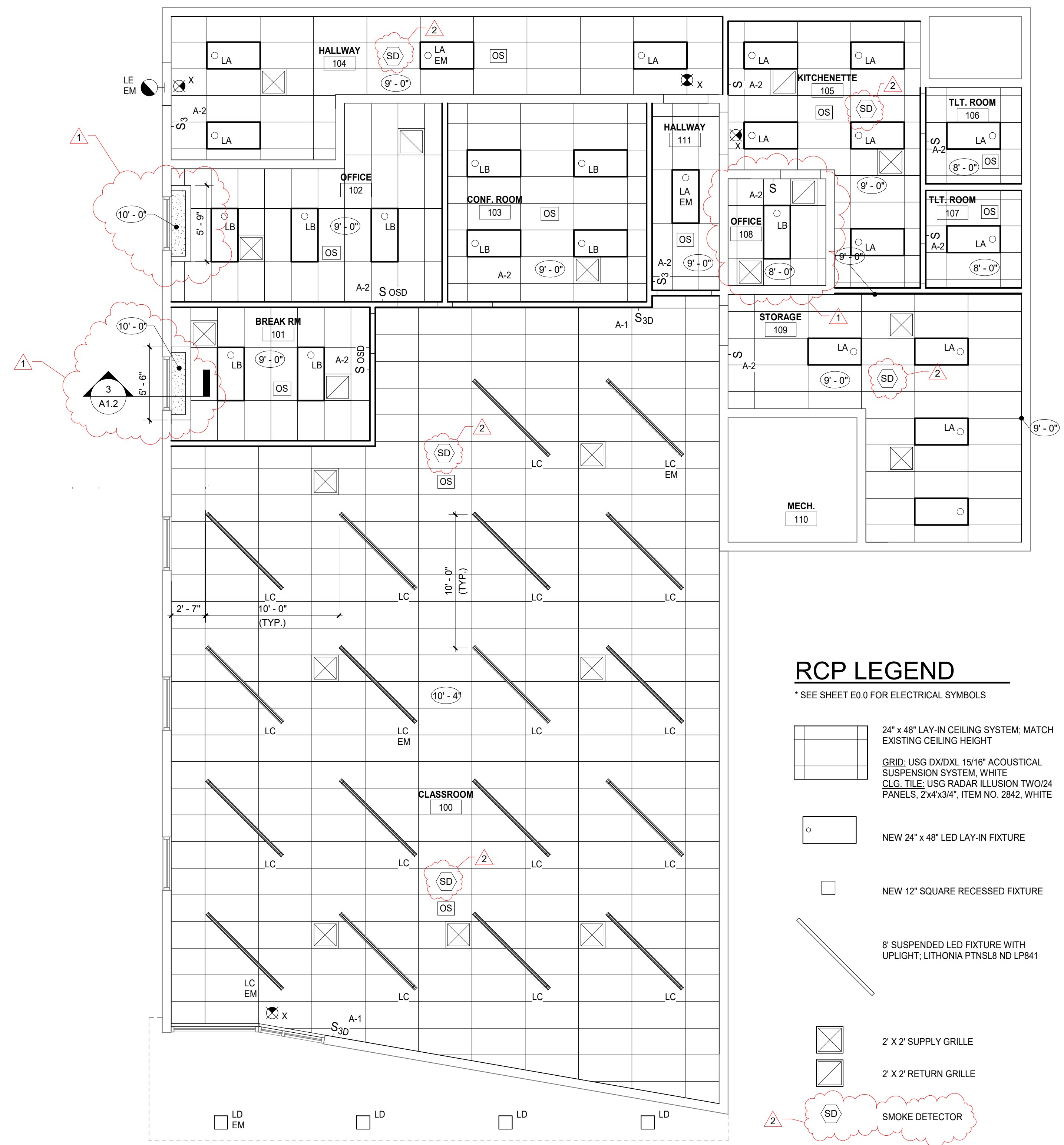
148 N. MIDLAND ST
 MERRILL, MICHIGAN

NO.	ISSUED	DATE
1	ADDENDUM 1	12-11-2020
2	ADDENDUM 2	12-29-2020

DATE	7 DECEMBER 2020
PROJECT #	2020.007
DRAWN BY	CDG
CHECKED BY	TCL

RCP & TOILET ROOM PLANS

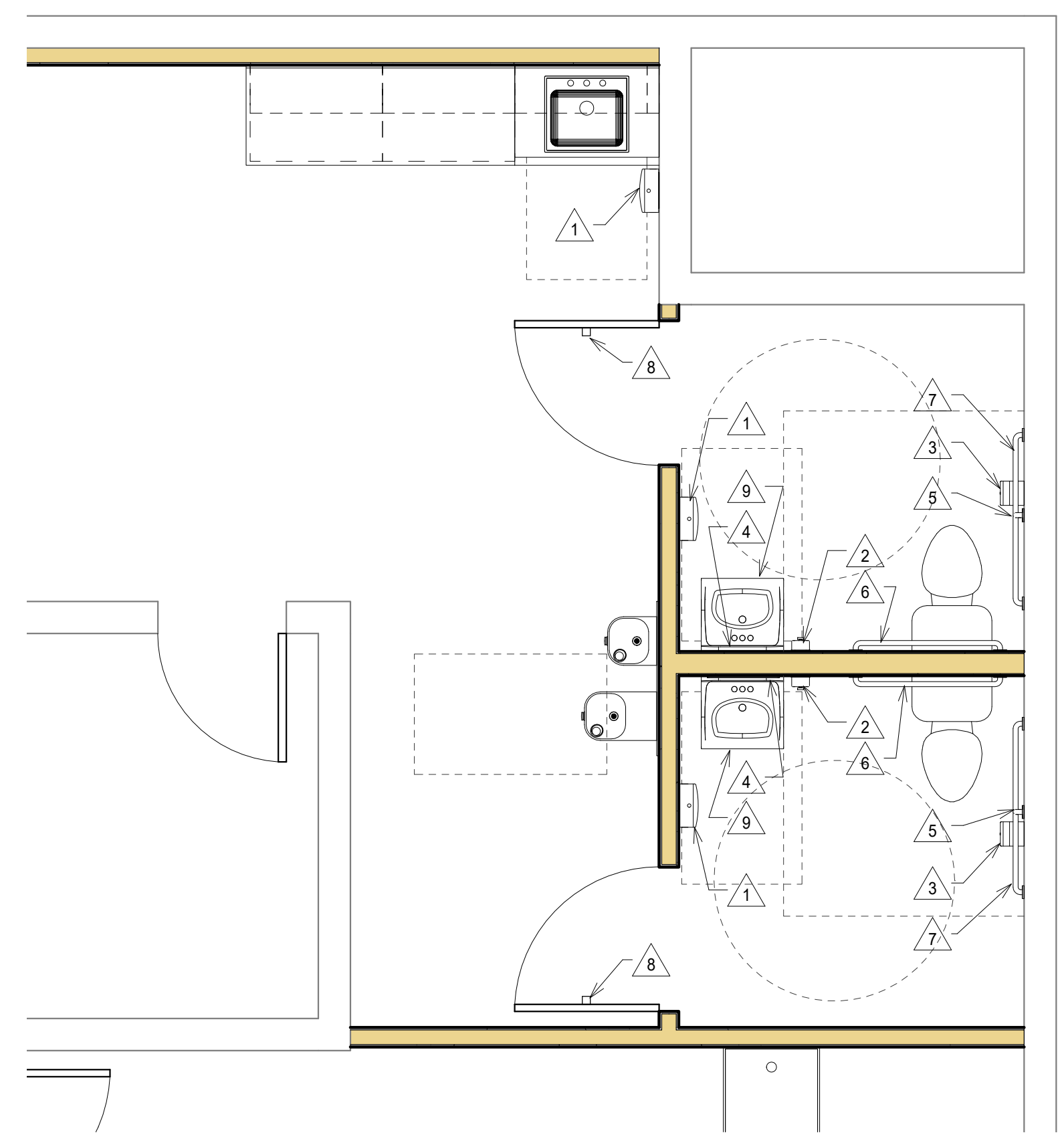
A1.2



2 REFLECTED CEILING PLAN
 3/16" = 1'-0"

RCP LEGEND

- * SEE SHEET E0.0 FOR ELECTRICAL SYMBOLS
- 24" x 48" LAY-IN CEILING SYSTEM; MATCH EXISTING CEILING HEIGHT
- GRID: USG DX/DXL 15/16" ACOUSTICAL SUSPENSION SYSTEM, WHITE
 CLG. TILE: USG RADAR ILLUSION TWO/24 PANELS, 2'x4'x3/4", ITEM NO. 2842, WHITE
- NEW 24" x 48" LED LAY-IN FIXTURE
- NEW 12" SQUARE RECESSED FIXTURE
- 8" SUSPENDED LED FIXTURE WITH UPLIGHT; LITHONIA PTNSL8 ND LP841
- 2' X 2' SUPPLY GRILLE
- 2' X 2' RETURN GRILLE
- SMOKE DETECTOR



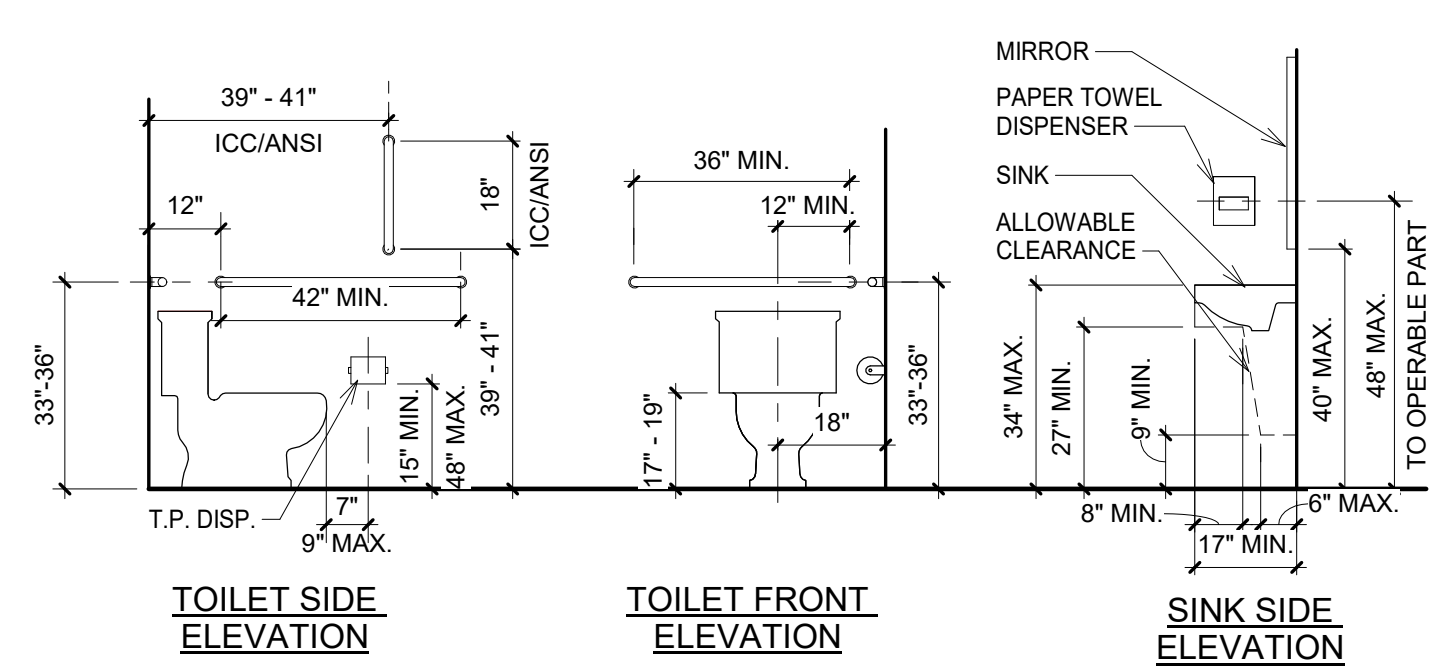
1 ENLARGED TOILET ROOMS & KITCHENETTE
 3/8" = 1'-0"

GENERAL LIGHTING NOTES

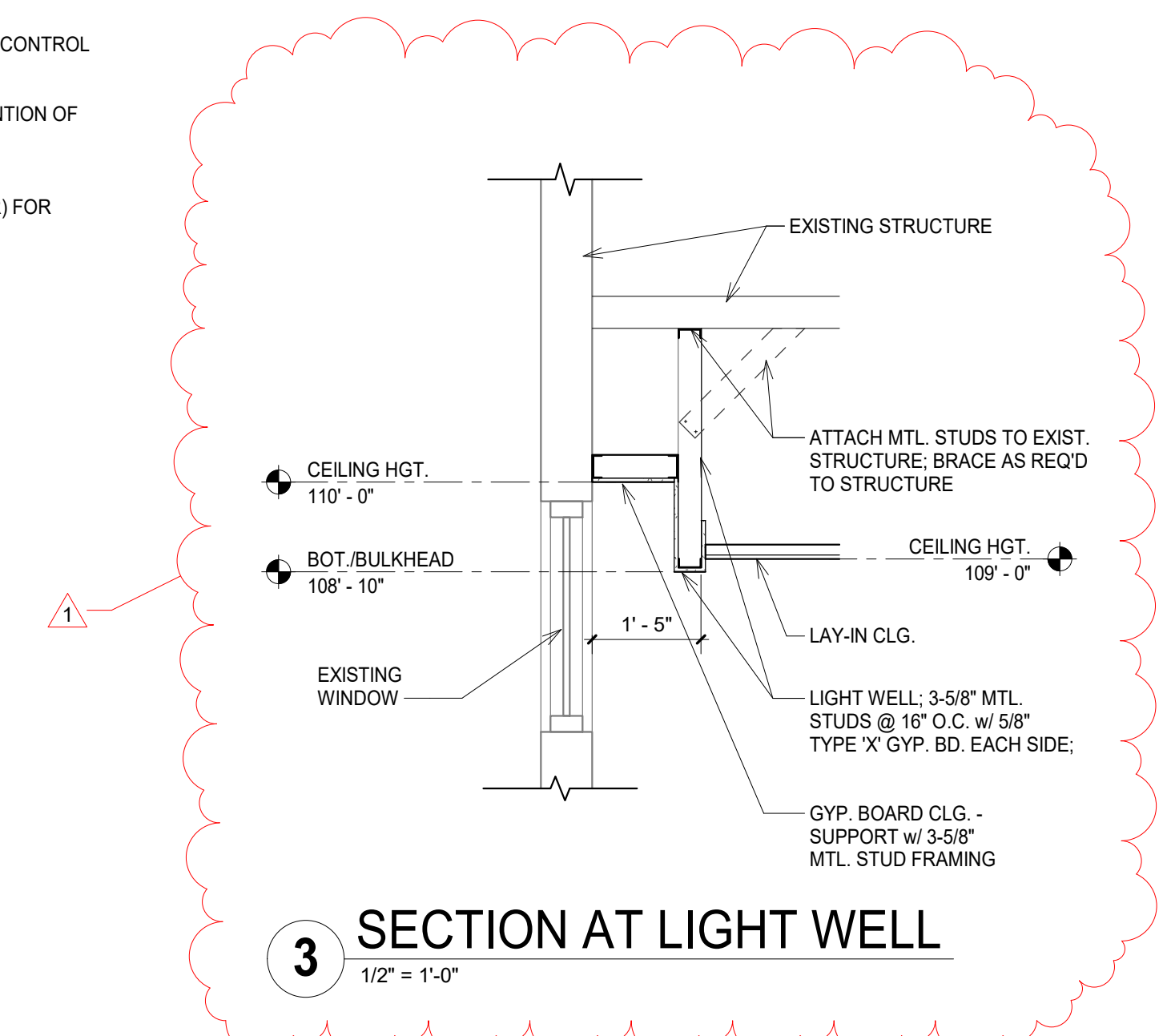
- FOR LUMINAIRES INFORMATION, REFER TO LUMINAIRES SCHEDULE UNLESS OTHERWISE NOTED.
- SEE ARCHITECTURAL REFLECTED CEILING PLAN FOR EXACT LOCATION OF LUMINAIRES PRIOR TO INSTALLATION. COORDINATE ALL CEILING TRIMS AND MOUNTING HARDWARE WITH ARCHITECTURAL AND STRUCTURAL TRADES.
- REFER TO ARCHITECTURAL DETAILS FOR ALL MOUNTING HEIGHTS OF LUMINAIRES IN EXPOSED CEILING AREAS. COORDINATE EXACT LOCATION AND MOUNTING HEIGHTS TO AVOID INTERFERENCE WITH MECHANICAL DUCTWORK, PIPING AND STRUCTURAL STEEL.
- ALL EMERGENCY AND EXIT LIGHTS SHALL BE CONNECTED TO LOCAL LIGHTING CIRCUIT AHEAD OF CONTROLS, UNLESS OTHERWISE STATED. FOR LUMINAIRES SHOWN AS EMERGENCY (EM ONLY), POWER LOSS SENSING LEAD TO BE CONNECTED AHEAD OF CONTROL AND LUMINAIRES TO BE SWITCHED.
- LUMINAIRES SHOWN AS NIGHT LIGHTS (NL ONLY) SHALL REMAIN ON 24 HOURS AND SHALL BE CONNECTED TO LOCAL CIRCUIT AHEAD OF CONTROL (UNLESS OTHERWISE NOTED).
- LUMINAIRES SHOWN AS NL/EM OR EM/NL SHALL BE WIRED WITH EMERGENCY BALLAST AND SHALL REMAIN ON 24 HOURS CONNECTED TO LOCAL CIRCUIT AHEAD OF CONTROL (UNLESS OTHERWISE NOTED).
- WHERE LIGHTING CONTROLLERS (LC) ARE SHOWN, REFER TO LIGHTING CONTROL DIAGRAM FOR WIRING REQUIREMENTS.
- LUMINAIRES USING 4' FLUORESCENT LAMPS SHALL BE INCLUDED WITH 2, 3, OR 4 LAMP BALLASTS. WHERE DUAL LEVEL SWITCHING IS SHOWN, LUMINAIRES SHALL BE WIRED IN TANDEM TO REDUCE THE NUMBER OF REQUIRED BALLASTS. SINGLE LAMP BALLASTS WILL NOT BE ALLOWED UNLESS THERE IS ONLY ONE LUMINAIRE IN A ROOM.
- WHERE LUMINAIRES ARE SHOWN WITH MULTIPLE SWITCHING, ONE SWITCH SHALL CONTROL OUTER TWO (2) LAMPS, AND ONE SWITCH SHALL CONTROL INNER LAMP(S).
- ALL DISCREPANCIES WITH THESE DOCUMENTS SHALL BE BROUGHT TO THE ATTENTION OF THE ENGINEER FOR CLARIFICATION PRIOR TO BIDS. IN OTHERWISE DOING SO, THE ELECTRICAL CONTRACTOR SHALL BE LIABLE FOR ANY REQUIRED REVISIONS.
- ALL ITEMS SHOWN ON PLAN ARE NEW UNLESS MARKED AS (E) FOR EXISTING OR (R) FOR RELOCATED.

TOILET ACCESSORIES KEY

- NOTE: "B" MODEL NUMBERS REFER TO BOBRICK
- SURFACE MOUNTED PAPER TOWEL DISPENSER (PROVIDED BY OWNER, INSTALLED BY G.C.)
 - SURFACE MOUNTED SOAP DISPENSER (PROVIDED BY OWNER, INSTALLED BY G.C.)
 - SURFACE MOUNTED MULTI-ROLL TOILET TISSUE DISPENSER (PROVIDED BY OWNER, INSTALLED BY G.C.)
 - B165-1836: 18" WIDE x 36" HIGH MIRROR WITH STAINLESS STEEL CHANNEL FRAME
 - B-5806x18: 18" STAINLESS STEEL GRAB BAR (INSTALL VERTICALLY)
 - B-5806x36: 36" STAINLESS STEEL GRAB BAR
 - B-5806x42: 42" STAINLESS STEEL GRAB BAR
 - B-671: SINGLE ROBE HOOK, STAINLESS STEEL
 - ADA COMPLIANT UNDERSINK PIPING COVER



TYPICAL ADA RESTROOM FIXTURE ELEVATIONS
 NOT TO SCALE



3 SECTION AT LIGHT WELL
 1/2" = 1'-0"