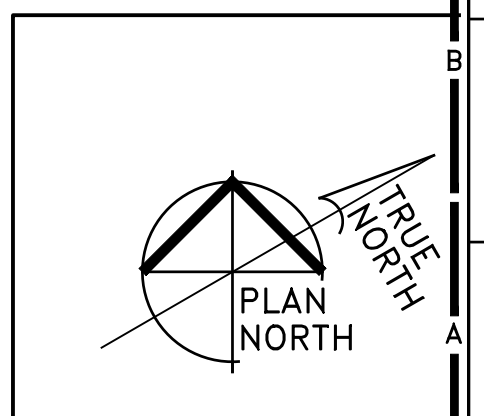


NORTH
FOUNDATION PLAN
 1/4"=1'-0"

- LEGEND**
- F1 - FOOTING - SEE SCHEDULE SHEET S3.1
 - MP1 - MASONRY PIER - SEE SCHEDULE SHEET S3.1
 - C1 - COLUMN - SEE SCHEDULE SHEET S3.1
 - WC1 - WOOD COLUMN - SEE SCHEDULE SHEET S3.1
 - CJ - CONTROL/CONSTRUCTION JOINT - SEE DETAILS 1/SS.1
 - 0'-0" - BOTTOM OF FOOTING ELEVATION
 - ↑ - STEPPED FOOTING - SEE DETAIL S4/SS.1
- SEE SHEET S3.1 FOR NOTES



NEW RESIDENCE FOR
 KATHLEEN BADER
 5007 NURMI DRIVE
 MIDLAND MICHIGAN

FOUNDATION PLAN

ISSUE
 BIDS AND PERMITS
 August 2, 2021
 Revised
 ADDENDUM No. 4
 August 20, 2021
 ADDENDUM No. 6
 August 27, 2021

SCALE:
 AS NOTED

PROJECT NO.
 20201000

DRAWING NO.
S2.1

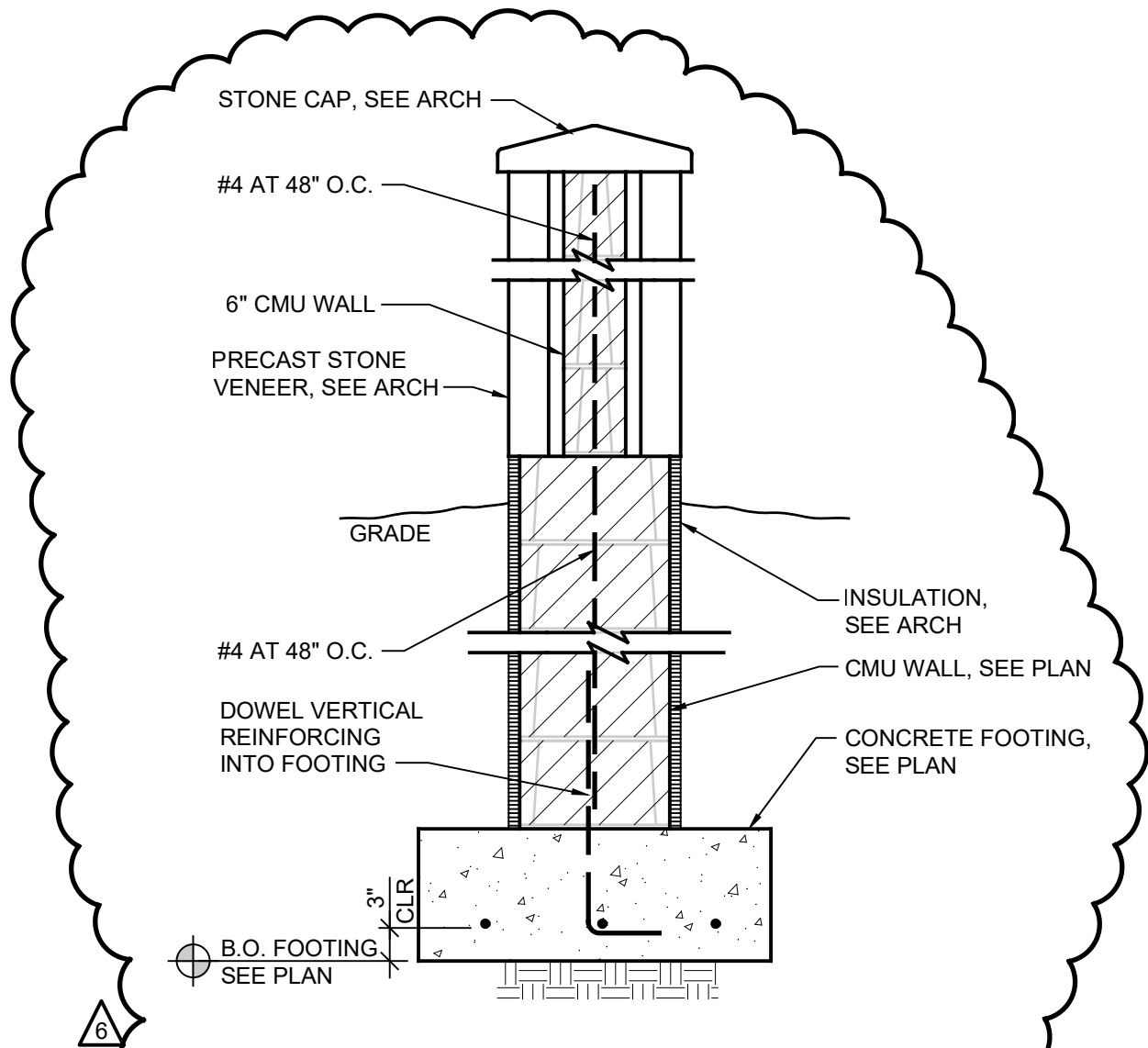
MASONRY PIER SCHEDULE

Fm = 2000 psi
Fy = 60 ksi

MARK	SIZE	VERT REINF	TIES	REMARKS
MP1	16"x16"	(4) #4	#3 AT 8" O.C.	GROUT SOLID, TOP OF PIER = 99'-4"
MP2	24"x32"	(10) #4	#3 AT 8" O.C.	GROUT SOLID, TOP OF PIER = 99'-4"
MP3	16"x24"	(6) #4	#3 AT 8" O.C.	GROUT SOLID, BOTTOM OF PIER = 99'-4"

2021-2901-SCH 2 PIER.dwg

6



6

1 EXTERIOR GARDEN WALL
SSK-1 3/4"=1'-0" 2021.2901-A13.dwg

MACMILLAN ASSOCIATES
CONSULTING ENGINEERS
714 EAST MIDLAND STREET • BAY CITY, MICHIGAN 48706
(989) 894-4300 F (989) 894-9930 WWW.MACMILLANASSOCIATES.COM

BADER RESIDENCE
MIDLAND, MICHIGAN

CHECKED BY
JAG

DRAWN BY
CKT

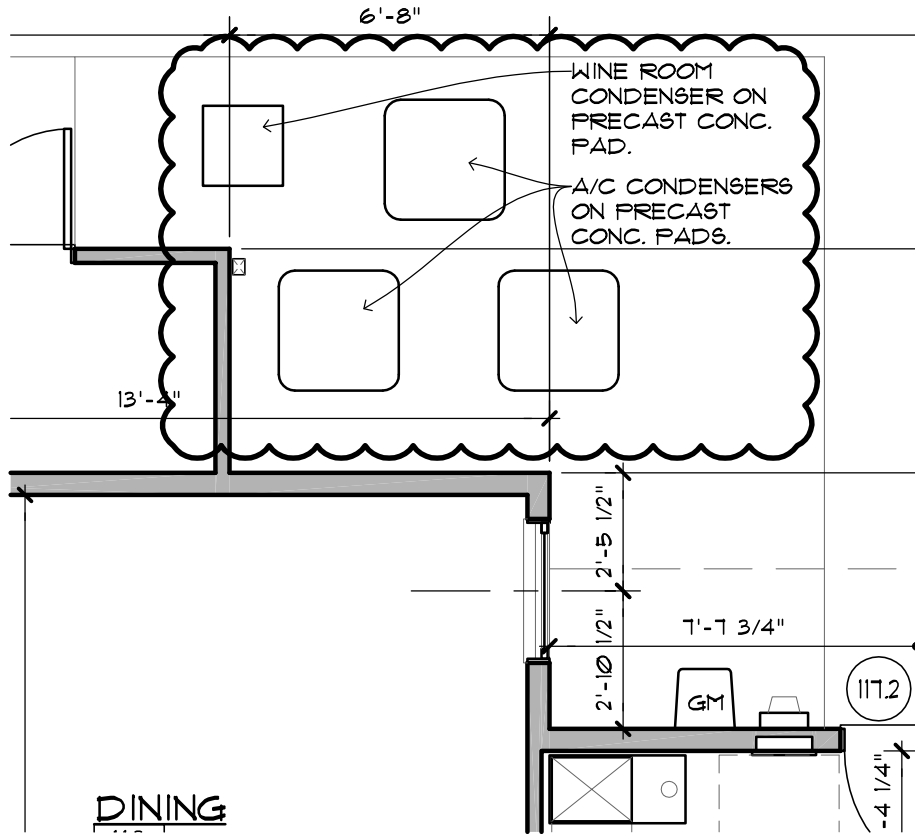
DATE
8/27/21

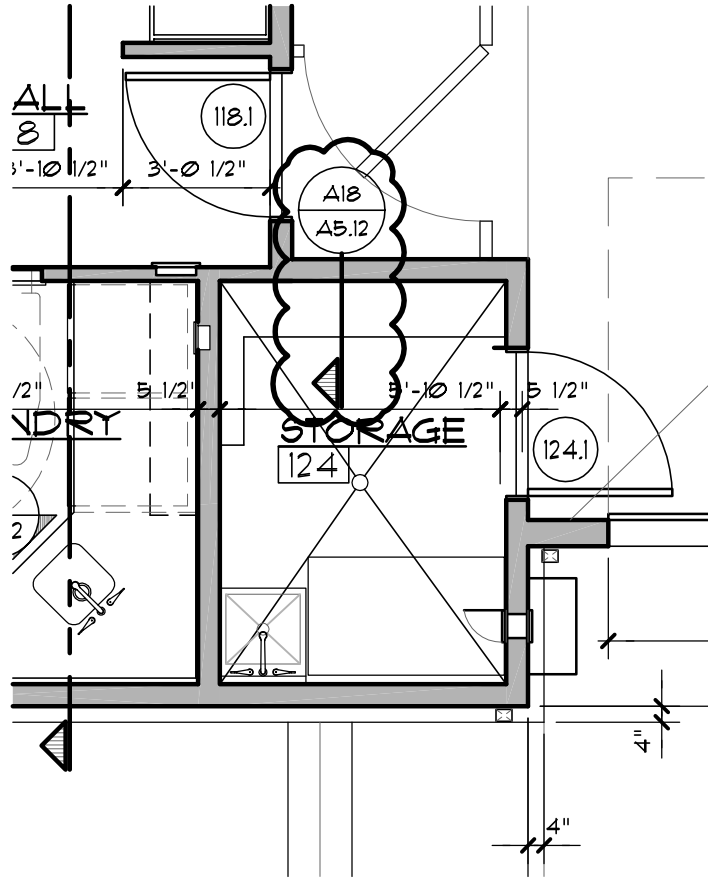
JOB NO.
20212901

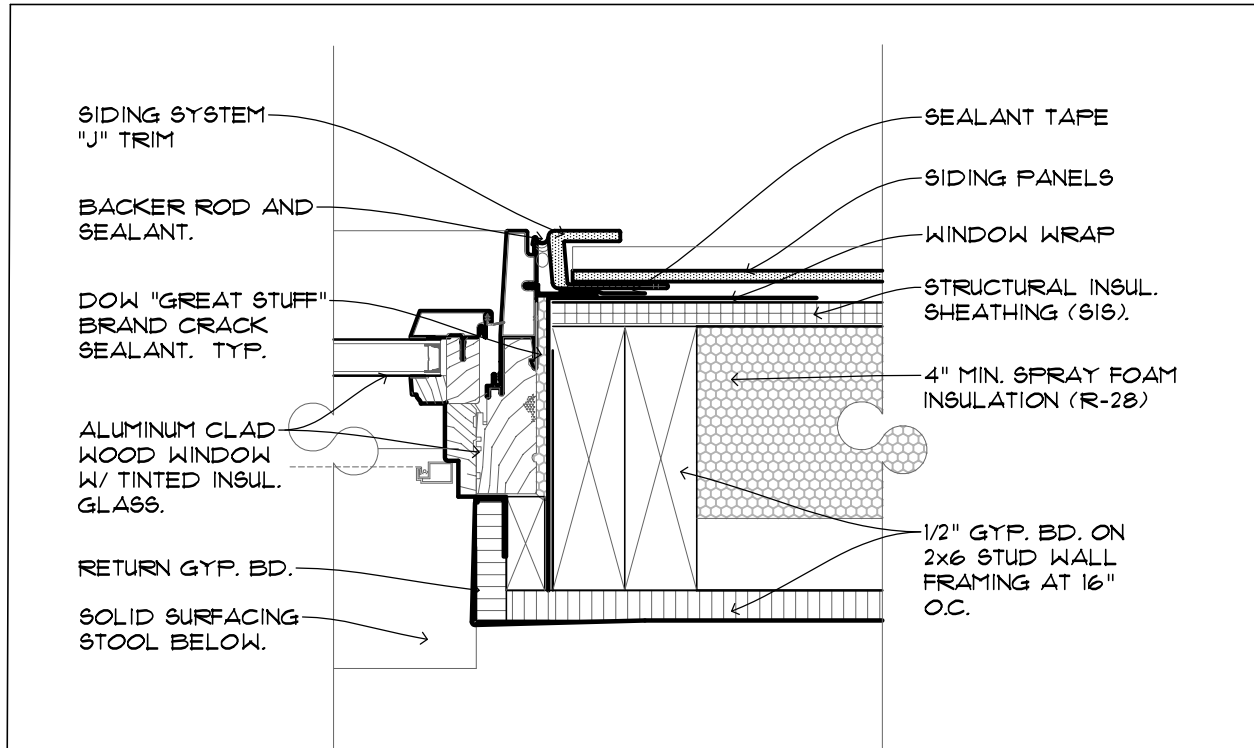
SHEET
ADD. 6

SSK-1

OF .



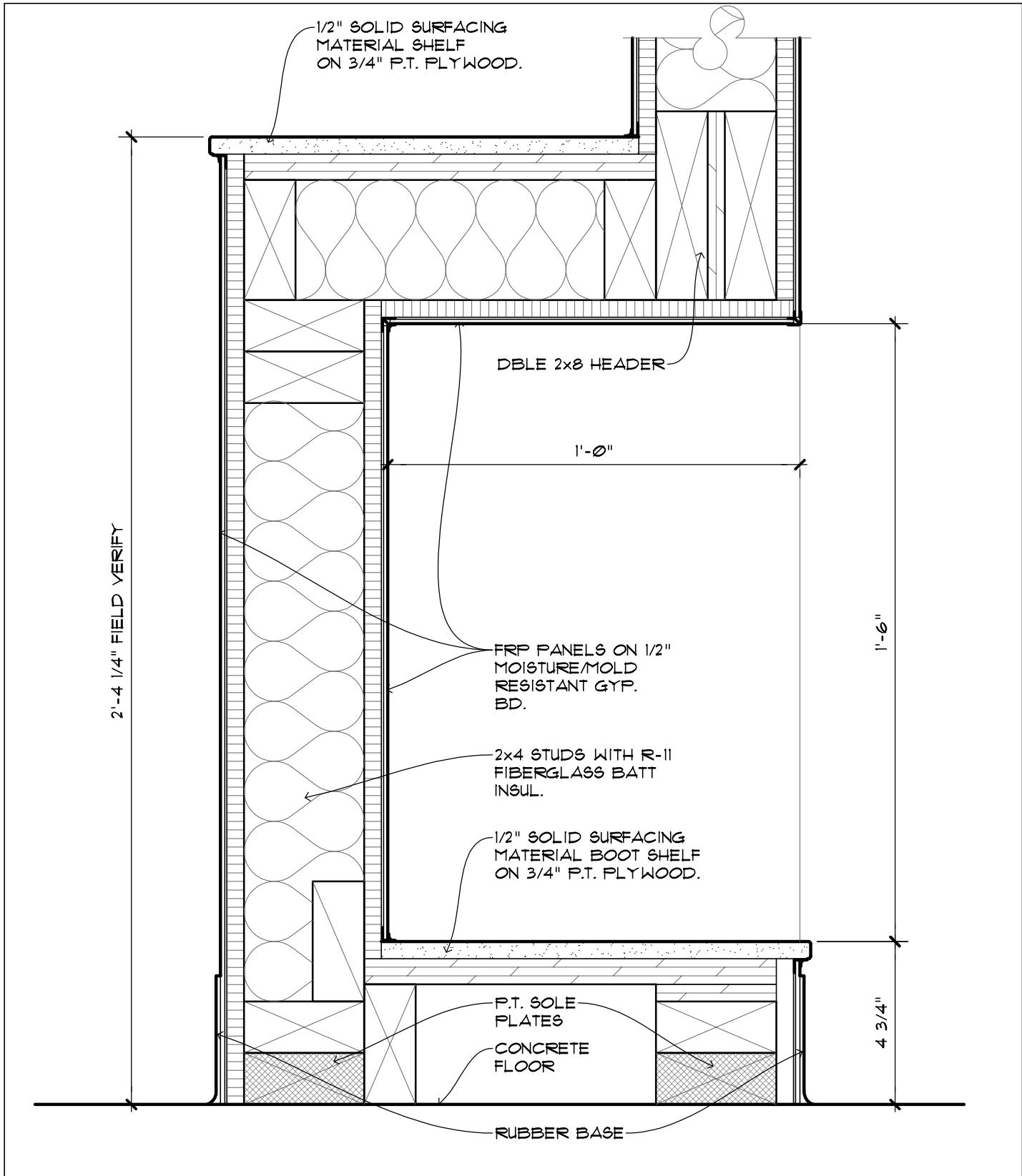




A5

WINDOW JAMB PLAN DETAIL

3" = 1'-0"



A18 BOOT SHELF DETAIL

3" = 1'-0"