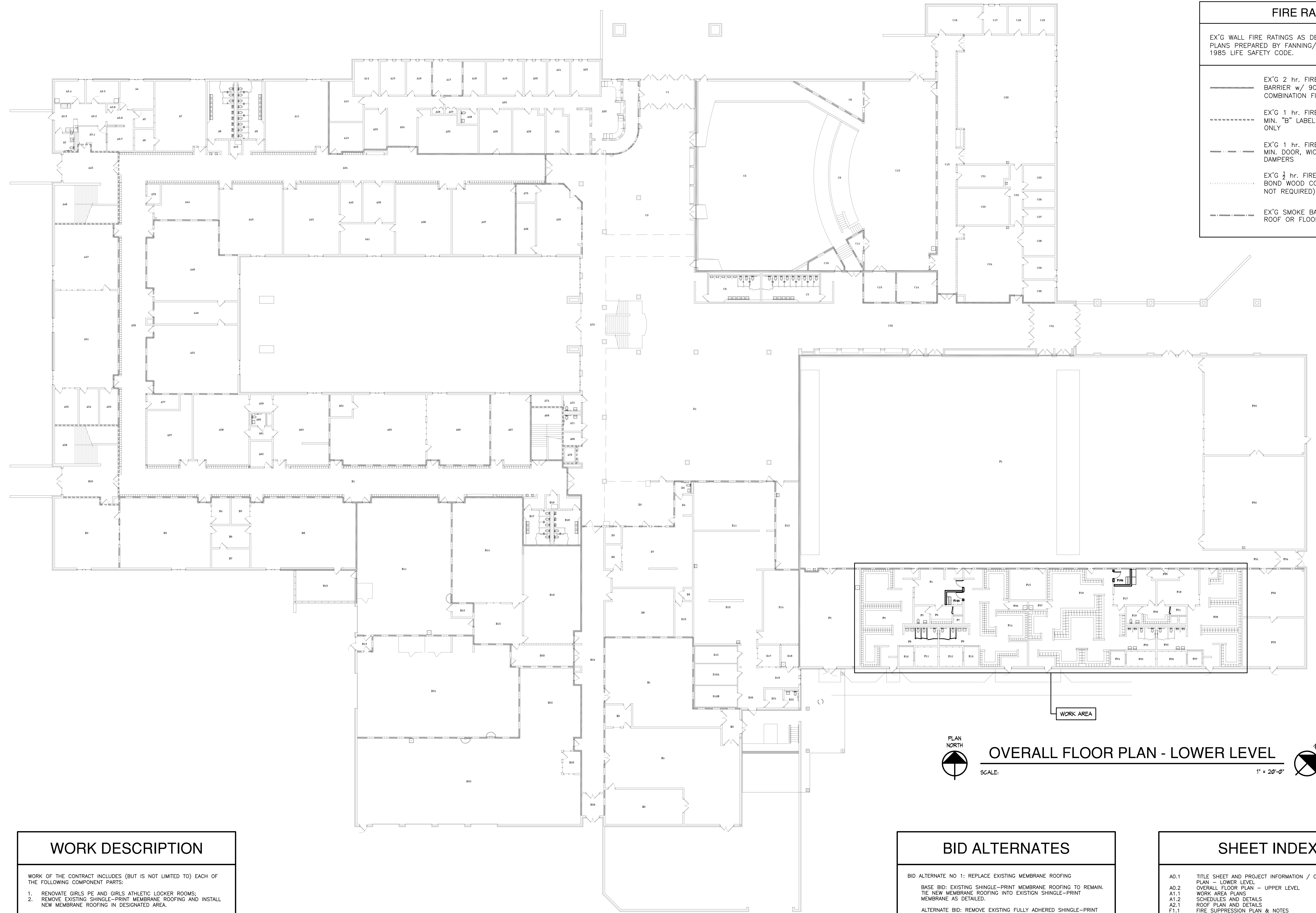


GAYLORD COMMUNITY SCHOOLS PROJECT SF3.8 BID PACKAGE NO. 1 GAYLORD HIGH SCHOOL ROOF AND LOCKER ROOM RENOVATION

90 LIVINGSTON BLVD., GAYLORD, MI 49735



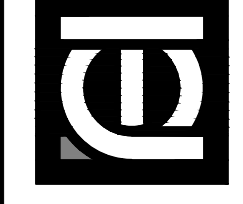
FIRE RATING LEGEND	
EX'G WALL FIRE RATINGS AS DESIGNATED ON ORIGINAL CONSTRUCTION PLANS PREPARED BY FANNING/HOWEY ASSOCIATES, INC. BASED ON 1985 LIFE SAFETY CODE.	
—	EX'G 2 hr. FIRE RATED SEPARATION WALL/SMOKE BARRIER w/ 90 MIN. "B" LABEL DOOR, FRAME, AND COMBINATION FIRE/SMOKE DAMPERS
- - - - -	EX'G 1 hr. FIRE RATED FIRE/SMOKE BARRIER w/ 60 MIN. "B" LABEL DOOR, FRAME, AND SMOKE DAMPER ONLY
- · - · - · -	EX'G 1 hr. FIRE RATED FIRE/SMOKE BARRIER w/ 45 MIN. DOOR, WIRE GLASS, FRAME, AND SMOKE DAMPERS
· · · · ·	EX'G 1/2 hr. FIRE RATED FIRE BARRIER 1 3/4" SOLID BOND WOOD CORE DOORS (DAMPERS AND CLOSERS NOT REQUIRED)
- - - - -	EX'G SMOKE BARRIER — EXTEND TO UNDERSIDE OF ROOF OR FLOOR DECK ABOVE

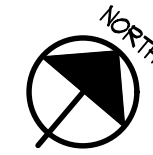
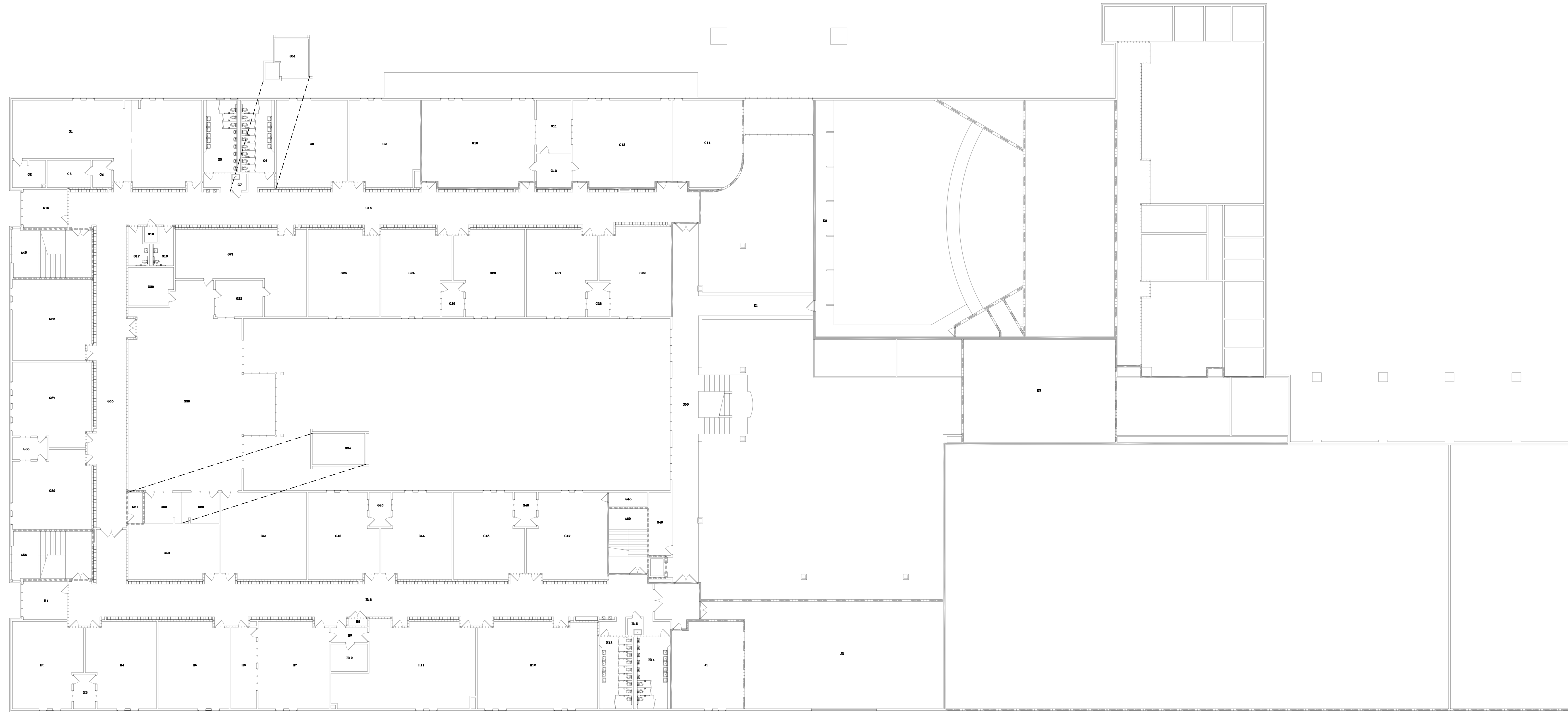
WORK DESCRIPTION
WORK OF THE CONTRACT INCLUDES (BUT IS NOT LIMITED TO) EACH OF THE FOLLOWING COMPONENT PARTS:
1. RENOVATE GIRLS PE AND GIRLS ATHLETIC LOCKER ROOMS;
2. REMOVE EXISTING SHINGLE-PRINT MEMBRANE ROOFING AND INSTALL NEW MEMBRANE ROOFING IN DESIGNATED AREA.

BID ALTERNATES
BID ALTERNATE NO 1: REPLACE EXISTING MEMBRANE ROOFING
BASE BID: EXISTING SHINGLE-PRINT MEMBRANE ROOFING TO REMAIN. THE NEW MEMBRANE ROOFING INTO EXISTING SHINGLE-PRINT MEMBRANE AS DETAILED.
ALTERNATE BID: REMOVE EXISTING FULLY ADHERED SHINGLE-PRINT MEMBRANE AND INSTALL NEW MEMBRANE ROOFING AND ACCESSORIES.

SHEET INDEX
A0.1 TITLE SHEET AND PROJECT INFORMATION / OVERALL FLOOR PLAN - LOWER LEVEL
A0.2 OVERALL FLOOR PLAN - UPPER LEVEL
A1.1 WORK AREA PLANS
A1.2 SCHEDULES AND DETAILS
A2.1 ROOF PLAN AND DETAILS
F1.1 FIRE SUPPRESSION PLAN & NOTES
E1.1 ELECTRICAL TILE SHEET & LIGHTING PLANS
E1.2 ELECTRICAL POWER PLANS & DETAILS

STATE OF MICHIGAN
 REGISTRATION

 ANTHONY P. ESSON ARCHITECT PO BOX 479 GAYLORD, MICHIGAN TELEPHONE: (989) 732-0585	DRAWING TITLE	PROJECT TITLE	PROJECT NO.	DATE	SHEET
	TITLE SHEET AND PROJECT INFORMATION OVERALL FLOOR PLAN - LOWER LEVEL	GAYLORD COMMUNITY SCHOOLS PROJECT SF3.8 - 2024 SINKING FUND PROJECT'S GHS ROOF AND LOCKER ROOM RENOVATIONS GAYLORD, MICHIGAN	284-20H.4	MARCH 1, 2024	A0.1



OVERALL FLOOR PLAN - UPPER LEVEL

SCALE: 1" = 20'-0"

ROOM LEGEND - UNIT A

- A2 TOILET
- A3 WAITING
- A3.2 WAITING
- A3.3 LAB
- A4 EXAM 1
- A3.5 EXAM 2
- A3.6 RECEPTION
- A3.7 RECEPTION
- A4 OFFICE
- A5 OFFICE/CONFERENCE
- A6 OFFICE
- A7 CLASSROOM
- A8 MEN'S TOILET
- A9 WOMEN'S TOILET
- A10 JANITOR
- A11 CLASSROOM
- A12 CONFERENCE
- A13 STUDENT GOVERNMENT
- A14 OFFICE
- A15 OFFICE
- A16 OFFICE
- A17 RECEPTION
- A18 STORAGE
- A19 CONFERENCE
- A20 ASSISTANT PRINCIPAL
- A21 ASSISTANT PRINCIPAL
- A22 PRINCIPAL
- A23 OFFICE
- A24 RECEPTION
- A25 CAREER EDUCATION
- A26 CLOSET
- A27 CLOSET
- A28 TOILET
- A29 WORK ROOM
- A30 WORK ROOM
- A31 ATHLETIC DIRECTOR
- A32 RECEPTION/SECRETARY
- A33 CORRIDOR
- A34 CORRIDOR
- A35 DISTRIBUTIVE EDUCATION
- A36 CLASSROOM
- A37 CLASSROOM
- A38 SPECIAL EDUCATION LEARNING CENTER
- A39 STORAGE
- A40 TESTING
- A41 CONFERENCE
- A42 SPECIAL EDUCATION LEARNING CENTER
- A43 CLASSROOM
- A44 SCIENCE OFFICE
- A45 VESTIBULE
- A46 STAIR
- A47 CLASSROOM
- A48 GENERAL SCIENCE
- A49 PREPARATION/STORAGE
- A50 CORRIDOR
- A51 PHYSICS
- A52 GENERAL SCIENCE
- A53 STORAGE
- A54 PROJECTS
- A55 PREPARATION
- A56 STAIR
- A57 MATHEMATICS OFFICE
- A58 SPECIAL EDUCATION CATEGORICAL
- A59 TIME OUT
- A60 OFFICE
- A61 COATS
- A62 OFFICE
- A63 SPECIAL EDUCATION CATEGORICAL
- A64 STORAGE
- A65 ELECTRONICS
- A66 CLASSROOM
- A67 FACILITY USING
- A68 ELEVATOR EQUIPMENT
- A69 STAIR
- A70 ELEVATOR
- A71 FACILITY TOILET
- A72 FACILITY TOILET
- A73 COMMON CORRIDOR
- A74 ELECTRICAL
- A75 OFFICE
- A76 ELECTRICAL
- A77 ELECTRICAL

ROOM LEGEND - UNIT B

- B1 CORRIDOR
- B2 CLASSROOM
- B3 CHEMISTRY
- B4 PROJECTS
- B5 PROJECTS
- B6 PREPARATION
- B7 STORAGE
- B8 BIOLOGY LABORATORY
- B9 CLOSET
- B10 OFFICE/CONFERENCE
- B11 OFFICE
- B12 VESTIBULE
- B13 KITCHEN
- B14 DRAFTING AND DESIGN
- B15 OFFICE
- B16 JANITOR
- B17 WOMEN'S TOILET
- B18 MEN'S TOILET
- B19 CONFERENCE
- B20 INDUSTRIAL TECHNOLOGY
- B21 OFFICE
- B22 CONSTRUCTION TRADES
- B23 CLASSROOM
- B24 TRANSPORTATION SERVICES TECHNOLOGY
- B25 CORRIDOR
- B26 VESTIBULE
- B27 VESTIBULE
- B28 OFFICE

ROOM LEGEND - UNIT C

- C1 VESTIBULE
- C2 WORK ROOM
- C3 CORRIDOR
- C4 ATHLETIC DIRECTOR
- C5 MEN'S TOILET
- C6 WOMEN'S TOILET
- C7 STORAGE
- C8 STORAGE
- C9 ORCHESTRA PIT
- C10 STORAGE
- C11 STORAGE
- C12 STAGE
- C13 STORAGE
- C14 MUSICIANS
- C15 CORRIDOR
- C16 ENTRY/WORK AREA
- C17 OFFICE
- C18 INSTRUMENT REPAIR
- C19 PERCUSSION STORAGE
- C20 BAND
- C21 UNIFORM STORAGE
- C22 STORAGE
- C23 CORRIDOR
- C24 CHORAL
- C25 PRACTICE
- C26 PRACTICE
- C27 PRACTICE
- C28 REHEARSAL
- C29 MUSIC LIBRARY
- C30 OFFICE
- C31 VESTIBULE
- C32 VESTIBULE
- C33 CORRIDOR

ROOM LEGEND - UNIT D

- D1 DINING ROOM
- D2 CLASSROOM
- D3 TABLE
- D4 LOCKERS
- D5 STORAGE
- D6 OFFICE
- D7 TEACHING KITCHEN
- D8 CLASSROOM
- D9 JANITOR
- D10 STORAGE
- D11 WAREHOUSE
- D12 WAREHOUSE
- D13 KITCHEN
- D14 DRY FOOD STORAGE
- D15 COOLER
- D16 FREEZER
- D18 FREEZER
- D19 LAUNDRY/JANITOR
- D20 BREAK ROOM
- D21 LOCKERS
- D22 TOILET

ROOM LEGEND - UNIT E

- E1 BUILDING MAINTENANCE AND STORAGE
- E2 OFFICE
- E3 MECHANICAL
- E4 MECHANICAL
- E5 ELECTRICAL

ROOM LEGEND - UNIT F

- F1 DINING ROOM
- F2 CLASSROOM
- F3 TABLE
- F4 LOCKERS
- F5 STORAGE
- F6 OFFICE
- F7 TEACHING KITCHEN
- F8 CLASSROOM
- F9 JANITOR
- F10 STORAGE
- F11 WAREHOUSE
- F12 WAREHOUSE
- F13 KITCHEN
- F14 ATHLETIC LOCKER ROOM
- F15 COOLER
- F16 FREEZER
- F18 FREEZER
- F19 LAUNDRY/JANITOR
- F20 BREAK ROOM
- F21 LOCKERS
- F22 TOILET
- F23 BOYS PHYSICAL EDUCATION TOILET
- F24 BOYS ATHLETIC DRYING ROOM
- F25 BOYS ATHLETIC LOCKER ROOM
- F26 BOYS PHYSICAL EDUCATION SHOWER
- F27 BOYS PHYSICAL EDUCATION SHOWER
- F28 BOYS PHYSICAL EDUCATION SHOWER
- F29 BOYS PHYSICAL EDUCATION LOCKER ROOM
- F30 FOOTBALL STORAGE
- F31 ATHLETIC STORAGE
- F32 WEIGHT TRAINING
- F33 WESTLING
- F34 VESTIBULE
- F35 JANITOR
- F37 JANITOR

ROOM LEGEND - UNIT G

- G1 HEALTH OCCUPATIONS
- G2 HEALTH OCCUPATIONS LOCKERS
- G3 STORAGE
- G4 OFFICE
- G5 MEN'S TOILET
- G6 WOMEN'S TOILET
- G7 JANITOR
- G8 ENGLISH OFFICE
- G9 CLASSROOM
- G10 BUSINESS TECHNOLOGY
- G11 COMPUTER ROOM
- G12 COMPUTER ROOM
- G13 ACCOUNTING
- G14 CLASSROOM
- G15 CONFERENCE
- G16 CORRIDOR
- G17 TOILET
- G18 ELECTRICAL CLOSET
- G19 ELECTRICAL CLOSET
- G20 PERIODICALS
- G21 AUDIO VISUAL STORAGE
- G22 OFFICE/WORK ROOM
- G23 SUPPORT ROOM
- G24 CLASSROOM
- G25 TESTING
- G26 CLASSROOM
- G27 CLASSROOM
- G28 TESTING
- G29 CLASSROOM
- G30 TESTING
- G31 MECHANICAL ACCESS
- G32 CONFERENCE
- G33 CONFERENCE
- G34 MECHANICAL MEZZANINE
- G35 CORRIDOR
- G36 CLASSROOM
- G37 CLASSROOM
- G38 TESTING
- G39 TESTING
- G40 SOCIAL STUDIES OFFICE/STORAGE
- G41 COMPUTER LAB
- G42 CLASSROOM
- G43 TESTING
- G44 CLASSROOM
- G45 CLASSROOM
- G46 CLASSROOM
- G47 CLASSROOM
- G48 ELECTRICAL
- G49 STORAGE
- G50 CORRIDOR
- G51 MECHANICAL MEZZANINE

ROOM LEGEND - UNIT H

- H1 CONFERENCE
- H2 CLASSROOM
- H3 TESTING
- H4 CLASSROOM
- H5 CLASSROOM
- H6 JOURNAL
- H7 CLASSROOM
- H8 ELECTRICAL CLOSET
- H9 VESTIBULE
- H10 BARROOM
- H11 VISUAL IMAGING
- H12 ART
- H13 WOMEN'S TOILET
- H14 MEN'S TOILET
- H15 JANITOR
- H16 CORRIDOR

ROOM LEGEND - UNIT J

- J1 CLASSROOM
- J2 MECHANICAL ROOM

ROOM LEGEND - UNIT K

- K1 BRIDGE
- K2 SOUND AND LIGHT CONTROL MEZZANINE
- K3 MECHANICAL ROOM

FIRE RATING LEGEND

EX'G WALL FIRE RATINGS AS DESIGNATED ON ORIGINAL CONSTRUCTION PLANS PREPARED BY FANNING/HOWEY ASSOCIATES, INC. BASED ON 1985 LIFE SAFETY CODE.

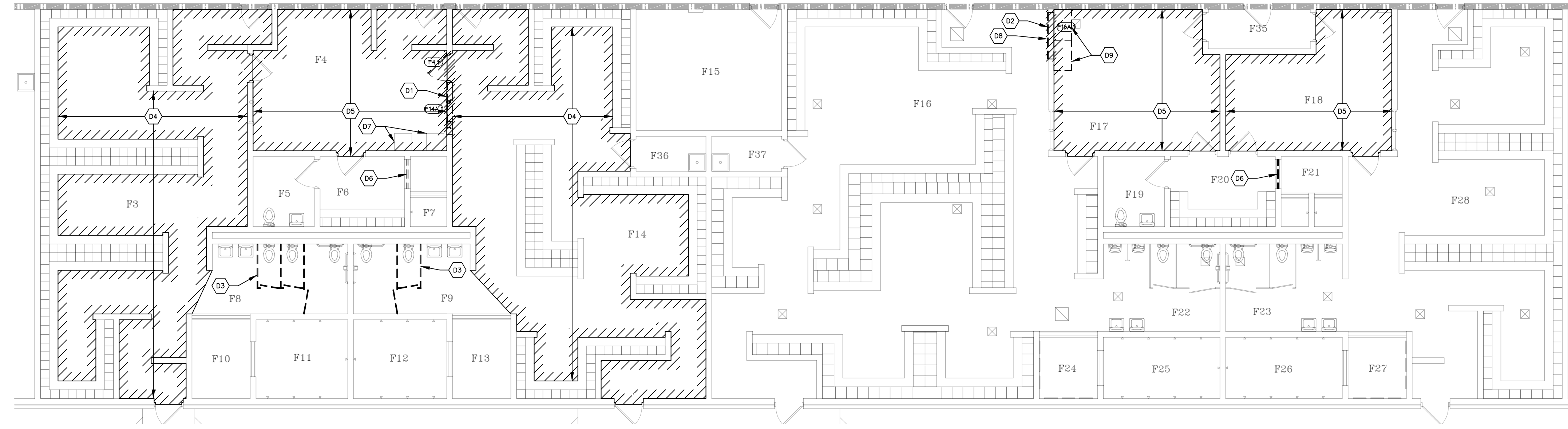
EX'G 2 hr. FIRE RATED SEPARATION WALL/SMOKE BARRIER w/ 90 MIN. "B" LABEL DOOR, FRAME, AND COMBINATION FIRE/SMOKE DAMPERS

EX'G 1 hr. FIRE RATED FIRE/SMOKE BARRIER w/ 60 MIN. "B" LABEL DOOR, FRAME, AND SMOKE DAMPER ONLY

EX'G 1 hr. FIRE RATED FIRE/SMOKE BARRIER w/ 45 MIN. DOOR, WIRE GLASS, FRAME, AND SMOKE DAMPERS

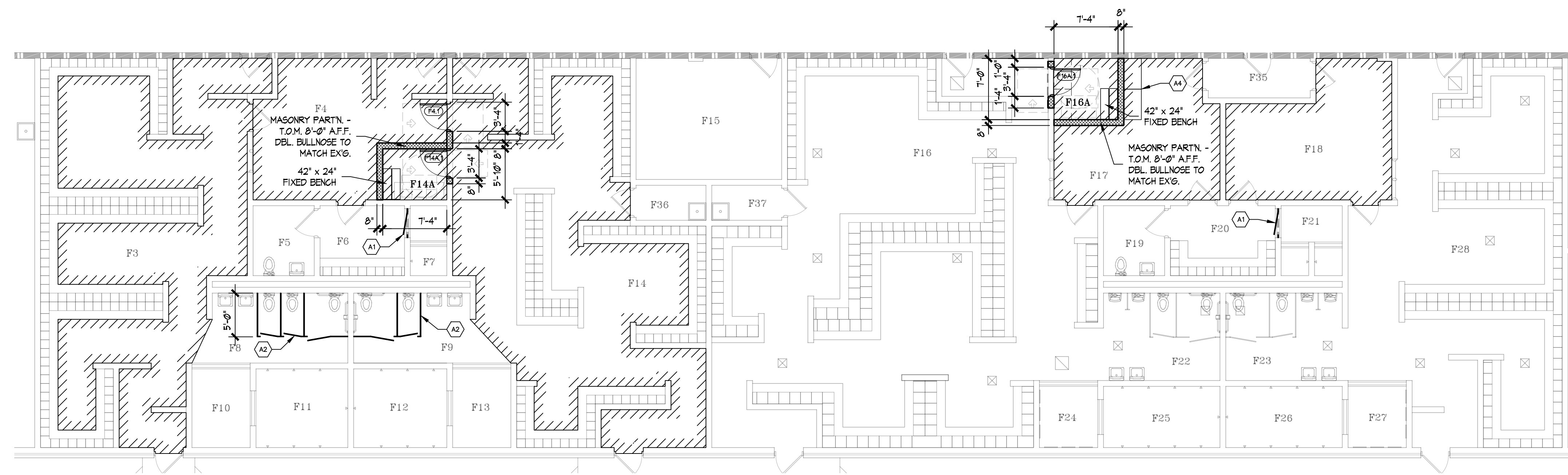
EX'G 1/2 hr. FIRE RATED FIRE BARRIER 1 1/4" SOLID BOND WOOD CORE DOORS (DAMPERS AND CLOSERS NOT REQUIRED)

EX'G SMOKE BARRIER - EXTEND TO UNDERSIDE OF ROOF OR FLOOR DECK ABOVE



WORK AREA PLAN - DEMOLITION

SCALE: 1/8" = 1'-0"



WORK AREA PLAN - NEW WORK

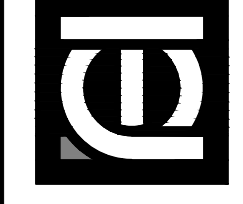
SCALE: 1/8" = 1'-0"

KEYED DEMOLITION NOTES

- D1 SALVAGE AND REMOVE EXISTING DOOR AND HARDWARE FOR REINSTALLATION IN NEW FRAME. REMOVE EX'G. GLAZING AND HM FRAME. SUPPORT MASONRY ABOVE AND ENLARGE EX'G. ROUGH OPENING TO ACCOMMODATE NEW DOOR AND FRAME. CUT EX'G. LINTEL BACK TO BEAR 8" ON MASONRY JAMBS AT DOOR F4.1. INSTALL NEW 8" CMU LINTEL w/ (2) #5 RODS BEARING 8" ON MASONRY JAMBS AT DOOR F14.1.
- D2 SUPPORT MASONRY ABOVE AND CREATE NEW ROUGH OPENING TO ACCOMMODATE NEW DOOR AND FRAME. INSTALL NEW 8" CMU LINTEL w/ (2) #5 RODS BEARING 8" ON MASONRY JAMBS AT DOOR F4.1.
- D3 SALVAGE AND REMOVE EX'G. PARTITION MOUNTED TOILET ACCESSORIES FOR REINSTALLATION ON NEW PARTITIONS. REMOVE EX'G. PARTITIONS.
- D4 REMOVE VINYL WALL BASE AND PREP EX'G. PAINTED CONCRETE FLOOR FOR NEW FLUID APPLIED FLOORING.
- D5 REMOVE VINYL WALL BASE AND CARPETING. PREP EX'G. CONCRETE SLAB FOR NEW FLUID APPLIED FLOORING.
- D6 REMOVE EX'G. SHOWER CURTAIN AND ROD.
- D7 EX'G. TELECOMMUNICATIONS TO REMAIN (PROTECT).
- D8 REMOVE EX'G. 4' x 4' TACK BOARD.
- D9 SALVAGE AND REMOVE EX'G. TALL STORAGE CABINETS. RELOCATE AND INSTALL AS DIRECTED BY THE OWNER.

KEYED CONSTRUCTION NOTES

- A1 INSTALL NEW PARTITION DOOR.
- A2 INSTALL NEW TOILET PARTITIONS. FIELD VERIFY FIXTURE LOCATIONS AND LOCATE SIDE PARTITIONS ACCORDINGLY. REINSTALL OWNER'S EXISTING SALVAGED TOILET TISSUE DISPENSERS AND FEMININE NAPKIN DISPOSALS.
- A3 INSTALL NEW FLUID APPLIED FLOORING AND VINYL BASE - SEE ROOM FINISH SCHEDULE.
- A4 INSTALL EX'G. SALVAGED TALL STORAGE CABINETS IN LOCATION AS DIRECTED BY OWNER.

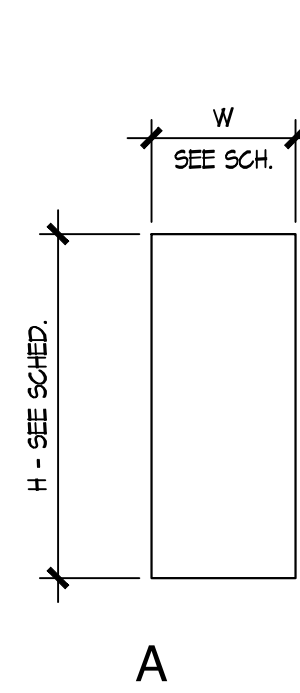


DOOR, FRAME AND HARDWARE SCHEDULE

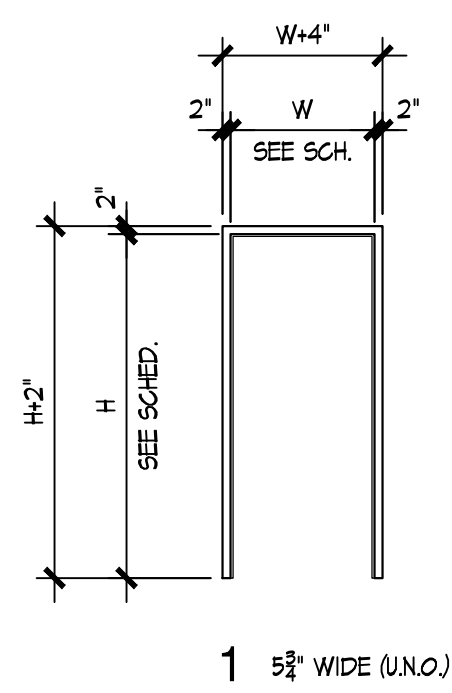
DOOR NO.	DOOR SIZE	DOOR DATA			FRAME DATA			DETAILS			ASSEMBLY FIRE RATINGS			HWDE SET	REMARKS
		MAT.	ELEV.	GLAZING	MAT.	ELEV.	GLAZING	HEAD	JAMB	SILL	DOOR	SIDELIGHT	WINDOW		
F4.1	3'-0" x 1'-2"	EXG	-	-	HM	1	-	H1	J1	-	-	-	-	1	
F14A.1	3'-0" x 1'-2"	WD	A	-	HM	1	-	H1	J1	-	-	-	-	2	
F16A.1	3'-0" x 1'-2"	WD	A	-	HM	1	-	H1	J1	-	-	-	-	2	

KEYED DOOR SCHEDULE NOTES:
 1. PAINT HM FRAME IPS-2 (ENAMEL)
 2. REUSE EXG. HARDWARE. FIELD VERIFY AND PREP FRAME ACCORDINGLY.

DOOR AND FRAME MATERIAL ABBREVIATIONS:
 HM HOLLOW METAL
 WD WOOD



DOOR ELEVATIONS
 SCALE: 1/2" = 1'-0"



DOOR FRAME ELEVATIONS
 SCALE: 1/2" = 1'-0"

ROOM FINISH SCHEDULE

ROOM NO.	ROOM NAME	FLOOR MAT.	WALL BASE	WALL MATERIAL / FINISH (PRIMARY SUBSTRATE / FINISH)				CEILING FINISH		REMARKS
				NORTH	EAST	SOUTH	WEST	MATERIAL / FINISH	HEIGHT	
F3	GIRL'S PE LOCKER RM.	FAF	V	E CMU (P) / ETR	E CMU (P) / ETR	E CMU (P) / ETR	E CMU (P) / ETR	ETR (SAT)	8'-0"	
F4	OFFICE	FAF	V	E CMU (P) / IPS-3 SEE NOTE 1	E CMU (P) / IPS-3 SEE NOTE 1	E CMU (P) / IPS-3 SEE NOTE 1	E CMU (P) / IPS-3 SEE NOTE 1	ETR (SAT)	8'-0"	
F8	LOCKERS	ETR (CT)	ETR (CT)	E CMU (P) / IPS-3 SEE NOTE 2	E CMU (P) / IPS-3 SEE NOTE 2	E CMU (P) / IPS-3 SEE NOTE 2	E CMU (P) / IPS-3 SEE NOTE 2	ETR (SAT)	8'-0"	
F8	GIRL'S PE TOILET	ETR (CT)	ETR (CT)	E CMU (P) / IPS-3 SEE NOTE 2	E CMU (P) / IPS-3 SEE NOTE 2	E CMU (P) / IPS-3 SEE NOTE 2	E CMU (P) / IPS-3 SEE NOTE 2	ETR (SAT)	8'-0"	
F9	GIRL'S ATHLETIC TOILET	ETR (CT)	ETR (CT)	E CMU (P) / IPS-3 SEE NOTE 2	E CMU (P) / IPS-3 SEE NOTE 2	E CMU (P) / IPS-3 SEE NOTE 2	E CMU (P) / IPS-3 SEE NOTE 2	ETR (SAT)	8'-0"	
F14	GIRL'S ATHLETIC LKR RM.	FAF	V	E CMU (P) / ETR	E CMU (P) / ETR	E CMU (P) / ETR	E CMU (P) / ETR	ETR (SAT)	8'-0"	
F14A	PRIVATE CHANGING	FAF	V	CMU / IPS-3 SEE NOTE 1	E CMU (P) / IPS-3 SEE NOTE 1	E CMU (P) / IPS-3 SEE NOTE 1	E CMU (P) / IPS-3 SEE NOTE 1	ETR (SAT)	8'-0"	
F16	BOY'S ATHLETIC LKR RM.	ETR (FAF)	ETR (V)	E CMU (P) / ETR	E CMU (P) / ETR	E CMU (P) / ETR	E CMU (P) / ETR	ETR (TEG)	8'-0"	
F16A	PRIVATE CHANGING	FAF	V	E CMU (P) / IPS-3 SEE NOTE 1	CMU / IPS-3 SEE NOTE 1	E CMU (P) / IPS-3 SEE NOTE 1	E CMU (P) / IPS-3 SEE NOTE 1	ETR (SAT)	8'-0"	
F17	OFFICE	FAF	V	E CMU (P) / IPS-3 SEE NOTE 1	E CMU (P) / IPS-3 SEE NOTE 1	E CMU (P) / IPS-3 SEE NOTE 1	E CMU (P) / IPS-3 SEE NOTE 1	ETR (SAT)	8'-0"	
F18	OFFICE	FAF	V	E CMU (P) / ETR	E CMU (P) / ETR	E CMU (P) / ETR	E CMU (P) / ETR	ETR (SAT)	8'-0"	
F20	LOCKERS	ETR (CT)	ETR (CT)	E CMU (P) / IPS-3 SEE NOTE 2	E CMU (P) / ETR	E CMU (P) / IPS-3 SEE NOTE 2	E CMU (P) / ETR	ETR (SAT)	8'-0"	

ROOM FINISH NOTES:
 1. PREP AND PAINT NEW AND EXISTING CMU WALL SURFACES.
 2. PATCH, PREP AND PAINT SHOWER OPENING JAMBS PRIOR TO INSTALLING NEW PARTITION DOOR.
 3. PATCH, PREP AND PAINT TOILET ROOM WALLS PRIOR TO INSTALLING NEW TOILET PARTITIONS.
 4. PREP AND PAINT NEW CMU WALL SURFACES TO MATCH EXISTING ADJACENT.

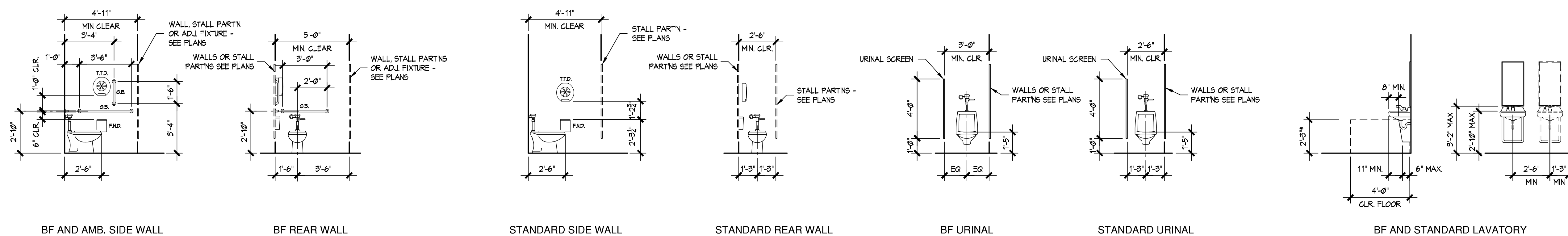
ROOM FINISH SCHEDULE ABBREVIATIONS:
 CMU CONCRETE MASONRY UNITS
 CT CERAMIC TILE
 E, EXG. EXISTING
 ETR EXISTING TO REMAIN
 IPS-# INTERIOR PAINT SYSTEM
 P PAINT
 SAT-# SUSPENDED ACOUSTICAL CEILING
 TEG TESSIM CEILING PANELS (DIRECT APPLIED)
 V VINYL WALL BASE

SCHEDULE CONVENTIONS - EXAMPLES:
 FLOORING AND WALL BASE = SCHEDULED MATERIAL OR FINISH
 ETR (FAF) = EXISTING TO REMAIN (FLUID APPLIED FLOORING)
 FAF = FLUID APPLIED FLOORING (NEW)

WALL MATERIAL / FINISH = MATERIAL OR SUBSTRATE / APPLIED FINISH
 E CMU (P) / IPS-# = EXISTING CMU (PAINTED) / NEW FINISH IPS AS SCHEDULED.
 E CMU (P) / ETR = EXISTING CMU (PAINTED) / ETR NO NEW APPLIED FINISH.

CEILING MATERIAL / FINISH = MATERIAL OR SUBSTRATE / APPLIED FINISH
 ETR (SAT) = EXISTING TO REMAIN (SUSPENDED ACOUSTICAL CEILING).
 SAT-1 = NEW SUSPENDED ACOUSTICAL CEILING AS SCHEDULED.

CEILING HEIGHTS LISTED IN SCHEDULE ARE ±

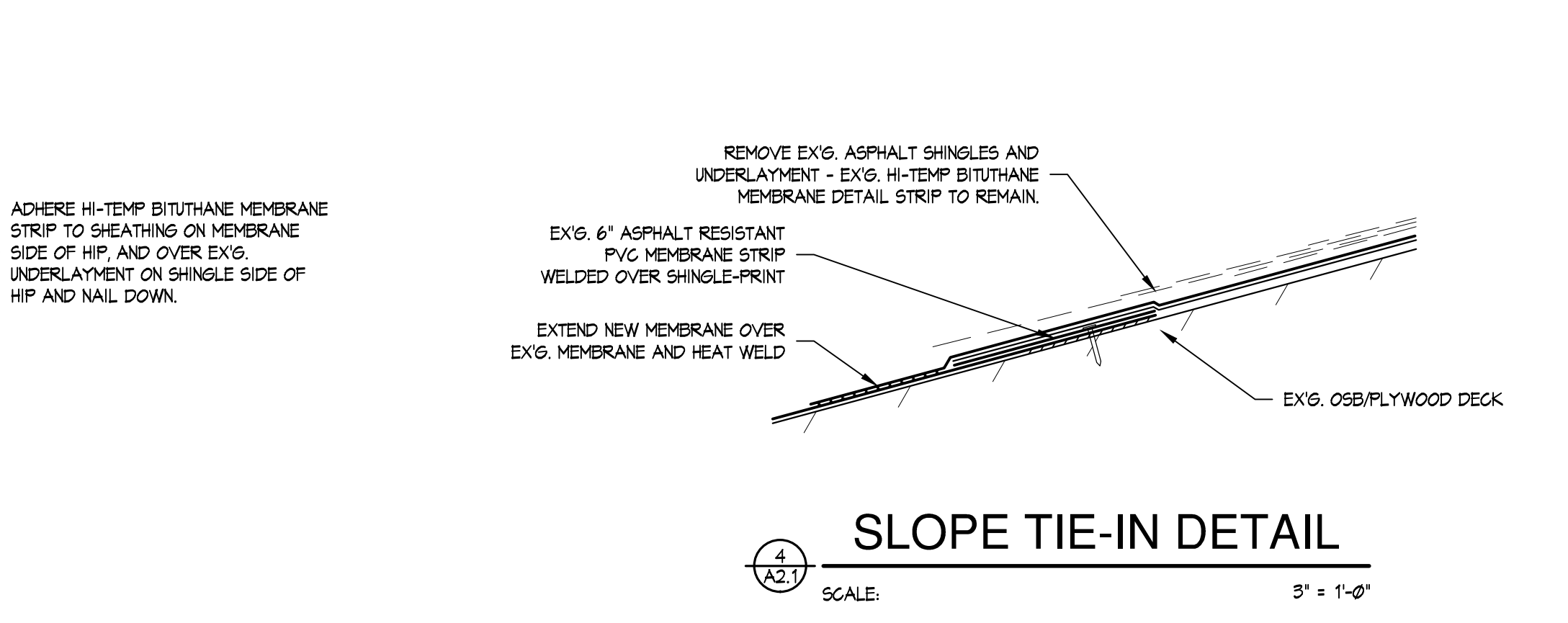
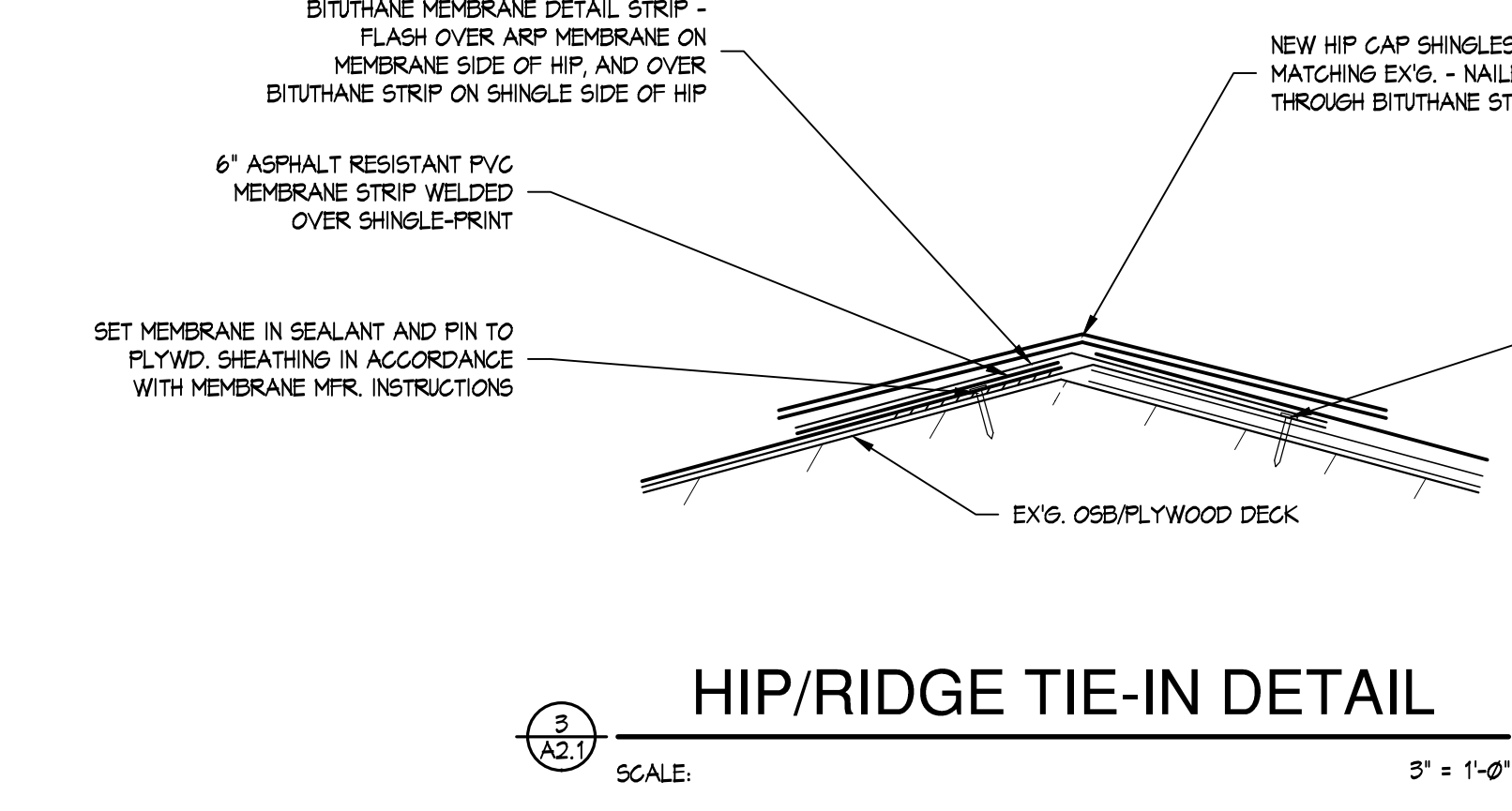
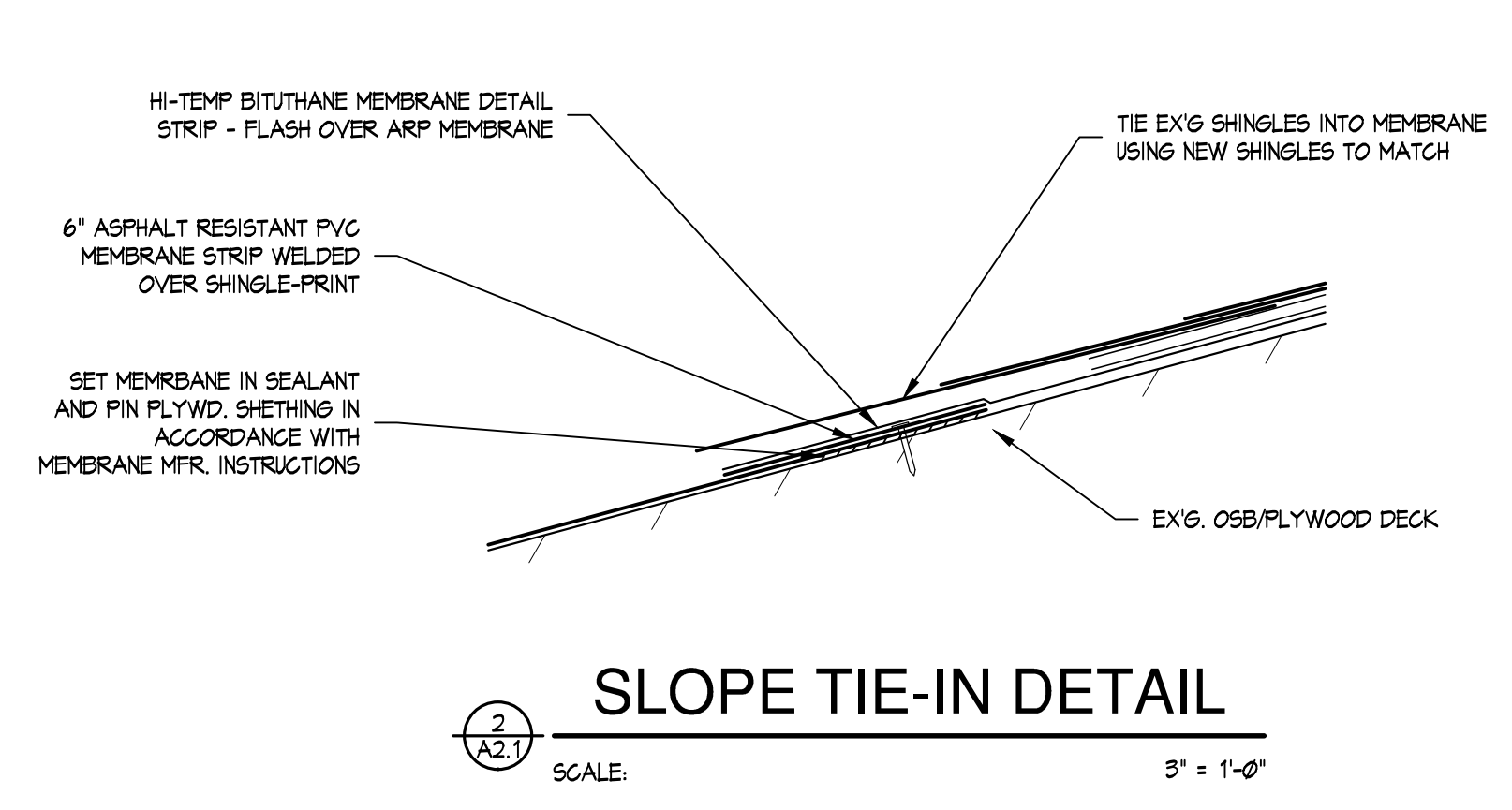
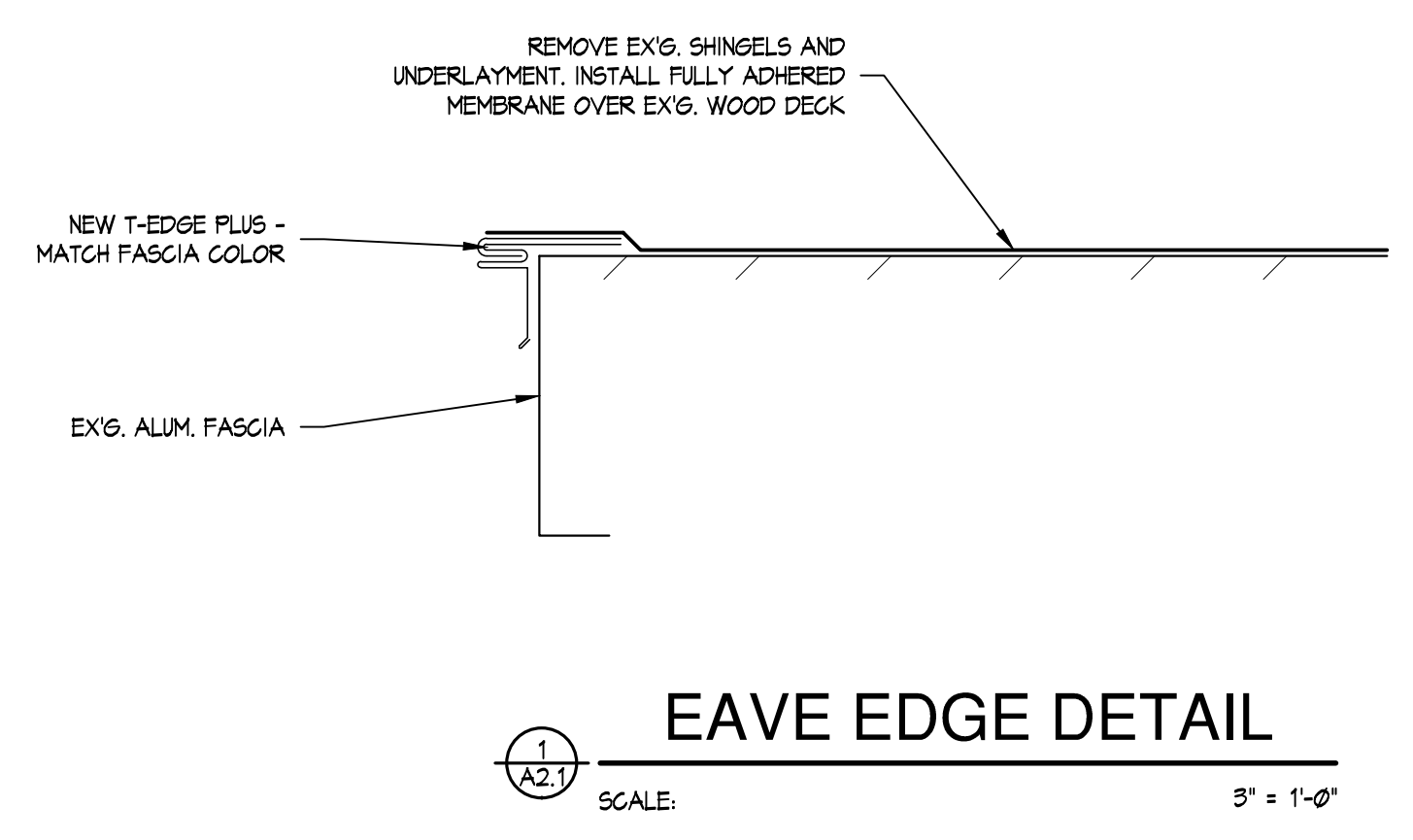
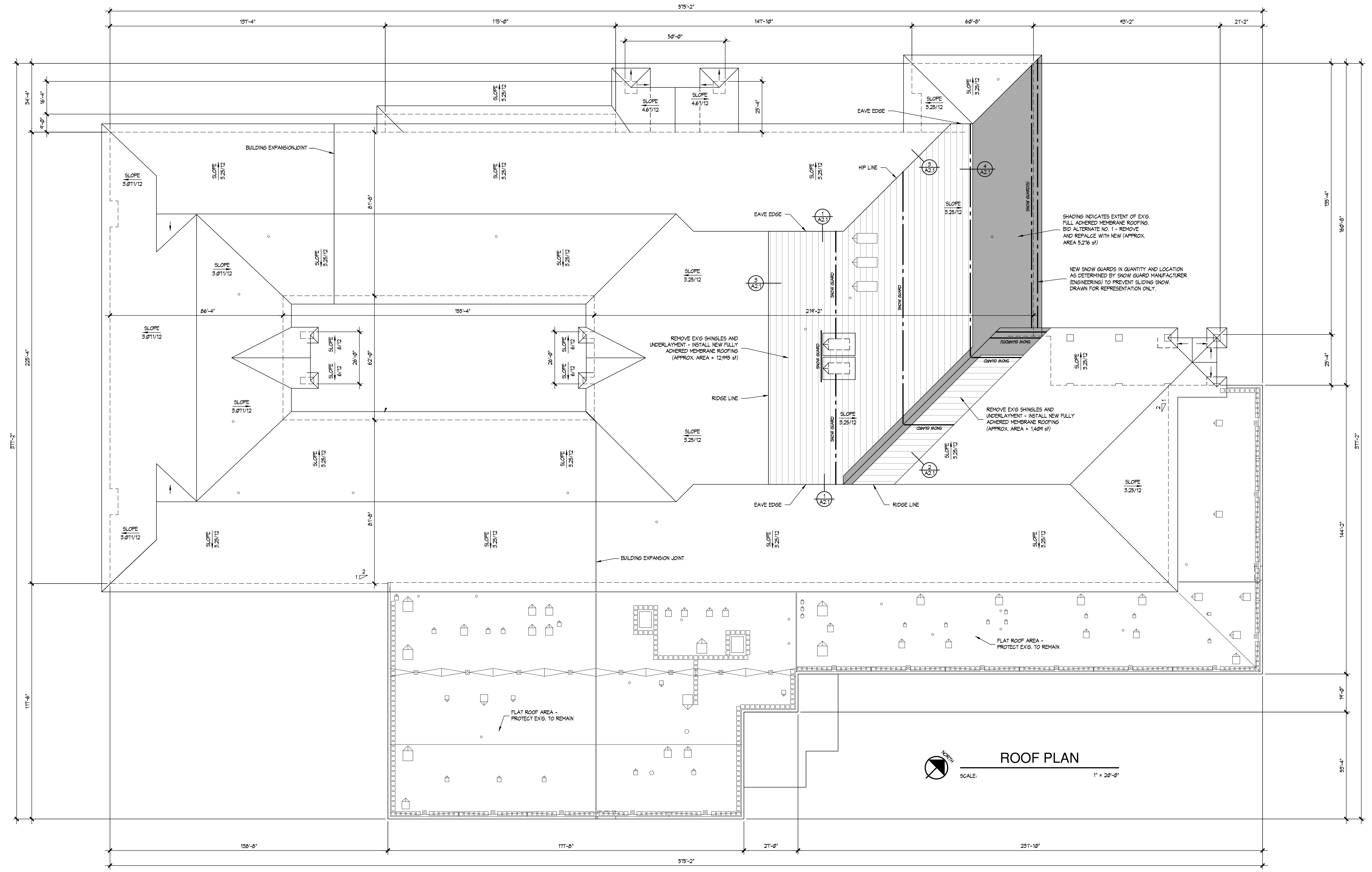


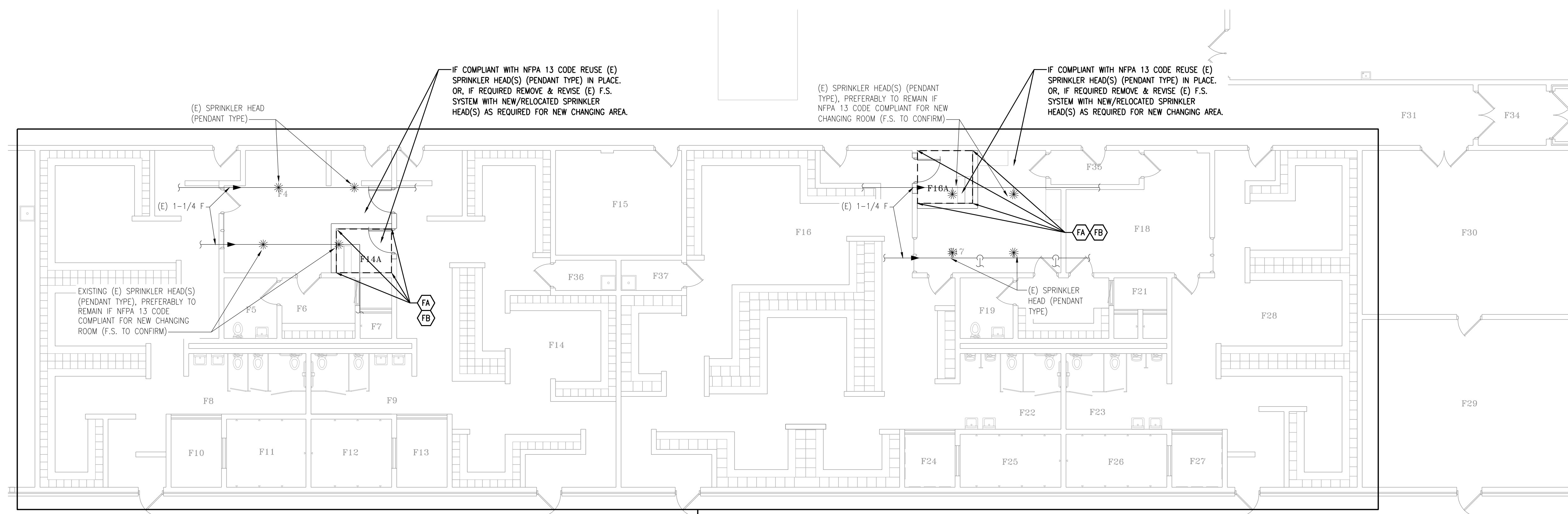
TYPICAL TOILET ROOM FIXTURE AND ACCESSORY LOCATIONS AND CLEARANCES

SCALE: 1/2" = 1'-0"

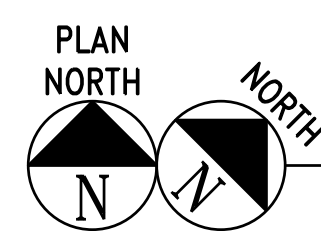
ELEVATION ABBREVIATIONS

X' G.B.	(LENGTH) GRAB BAR
E.H.D.	ELECTRIC HAND DRYER
E.H.R.D.	ELECTRIC HAIR DRYER
F.N.D.	FEMINE NAPKIN DISPOSAL
F.S.S.	FOLDING SHOWER SEAT
W.R.R.	WARRIOR
T.T.D.	TOILET TISSUE DISPENSER
T.H.	TOWEL HOOK





WORK AREA



"WORK AREA" FIRE SUPPRESSION PLAN
SCALE: 1/4" = 1'-0"

KEYED FIRE SUPPRESSION CONSTRUCTION NOTES:

(FA) FIRE SUPPRESSIONS CONTRACTOR (F.S.) SHALL REVISE/EXTEND THE EXISTING WET PIPE FIRE SUPPRESSION SYSTEM IF NEEDED? (F.S. TO CONFIRM) AS REQUIRED TO ACCOMMODATE A SPACE USE CHANGE FROM PROTECTING AN OFFICE AREA BY INTRODUCING A NEW #50 SQ.FT. CHANGING AREA INTO THE EXISTING SPACE. (A 8 FEET TALL PARTITION WALLS WITH 3 INCHES OF SPACE BETWEEN TOP OF PARTITION WALL AND THE EXISTING CEILING GRID/TILE @ 8'-7" AFF. REFER TO ARCHITECTURAL PLANS FOR SECTIONS/ELEVATIONS & CEILING HEIGHTS.

(FB) PREFERENCE IS TO REUSE EXISTING (E) SPRINKLER HEADS IN THEIR CURRENT LOCATIONS IF POSSIBLE. F.S. SHALL CONFIRM PER NFPA-13 WITH CALCULATIONS DURING LAYOUT/SHOP DRAWING PHASE.
IF REQUIRED EITHER RELOCATE (E) SPRINKLER HEAD(S), OR PROVIDE NEW SPRINKLER HEAD(S), AND EXTEND (E) FIRE SUPPRESSION PIPING AS REQUIRED TO ACCOMMODATE THE NEW CHANGING AREA PARTITION WALLS WITHIN EXISTING COACHES OFFICE SPACE.

GENERAL FIRE PROTECTION/SUPPRESSION DEMOLITION NOTES:

- THESE DRAWINGS ARE DIAGRAMMATIC AND INDICATE THE GENERAL EXTENT OF THE WORK. THE EXTENT OF DEMOLITION WORK SHALL BE AS REQUIRED BY THE NEW WORK.
- THE CONTRACTOR SHALL VISIT THE SITE AND FAMILIARIZE THEMSELVES WITH THE EXISTING SYSTEMS/EQUIPMENT PRIOR TO ISSUING HIS BID. ALL EXISTING PIPE SIZES AND ROUTINGS/LOCATIONS SHOWN ARE APPROXIMATE AND SHALL BE FIELD VERIFIED BY CONTRACTOR.
- ALL FIRE SUPPRESSION ITEMS TO BE REMOVED SHALL BE REMOVED COMPLETE WITH ALL RELATED ITEMS INCLUDING, BUT NOT LIMITED TO, HANGERS, SUPPORTS, CONTROLS, ETC. REMOVED ITEMS SHALL BE LEGALLY DISPOSED OF OFF SITE. CAP ALL OPEN ENDED PIPING AND DUCTWORK.
- ANY INTERRUPTION OF EXISTING SERVICES AND/OR EQUIPMENT SHALL BE PERFORMED AT A TIME APPROVED, BY THE OWNER OR OWNER'S REPRESENTATIVE, AT LEAST (7) DAYS IN ADVANCE SO AS NOT TO INTERFERE WITH THE PRESENT BUILDING OPERATION.
- WHERE DEMOLITION OF EXISTING SERVICES ARE REQUIRED TO ACCOMMODATE THE PROJECT PHASING/SCHEDULING, AND SERVICES ARE TO BE INTERRUPTED IN AREAS THAT ARE REMAINING OCCUPIED, THE CONTRACTOR SHALL PROVIDE TEMPORARY SERVICES AND/OR CONNECTIONS TO THE OCCUPIED AREAS TO MAINTAIN ITS PRESENT OPERATION. IF SYSTEM SHUT DOWNS ARE REQUIRED, THE CONTRACTOR SHALL SCHEDULE WORK TO BE PERFORMED AT UNOCCUPIED HOURS.
- ALL ITEMS TO BE REMOVED AND/OR RELOCATED SHALL BE REMOVED AND/OR RELOCATED TOGETHER WITH ALL RELATED ITEMS AS REQUIRED BY THE NEW WORK TO BE PERFORMED.
- COORDINATE ALL REMOVAL AND/OR RELOCATION OF EXISTING FIRE SUPPRESSION EQUIPMENT/SYSTEMS WITH THE EXTENT OF THE NEW WORK AND WITH ALL OTHER TRADES INVOLVED.
- UNLESS NOTED OTHERWISE, EACH SUBCONTRACTOR SHALL BE RESPONSIBLE FOR ALL CUTTING, CORING, PATCHING ASSOCIATED WITH THEIR WORK. CUTTING, CORING, PATCHING WORK SHALL BE PERFORMED BY A QUALIFIED SUB-CRONTACTOR AND MATCH EXISTING OR NEW FINISHES.

GENERAL FIRE PROTECTION/SUPPRESSION NOTES:

- THESE DRAWINGS ARE DIAGRAMMATIC AND INDICATE THE GENERAL SCOPE OF WORK. CONTRACTOR SHALL PROVIDE DESIGN & BUILD OF FIRE PROTECTION/SUPPRESSION SYSTEMS AND RELATED EQUIPMENT COMPLETE AND INCLUDE ALL NECESSARY OFFSETS, FITTINGS, AND OTHER COMPONENTS REQUIRED DUE TO INTERFERENCES, SPACE CONSTRAINTS, ETC... THE FIRE SUPPRESSION CONTRACTOR (F.S.) SHALL DESIGN & BUILD NEW FIRE SUPPRESSION SYSTEMS AND/OR RENOVATE EXISTING (E) FIRE SUPPRESSION SYSTEMS COMPLETE, PER APPLICABLE BUILDING CODES, PER NATIONAL FIRE PROTECTION ASSOCIATION (NFPA), PER OWNER'S INSURANCE REQUIREMENTS, AND PER REQUIREMENTS OF AUTHORITIES HAVING JURISDICTION (AHJ). REFER TO DIVISION 21000 SPECIFICATIONS FOR ADDITIONAL REQUIREMENTS.
- THE CONTRACTOR SHALL VISIT THE SITE AND FAMILIARIZE THEMSELVES WITH THE EXISTING SYSTEMS/EQUIPMENT PRIOR TO ISSUING HIS BID. ALL EXISTING PIPE SIZES AND ROUTINGS/LOCATIONS SHOWN ARE APPROXIMATE AND SHALL BE FIELD VERIFIED BY CONTRACTOR.
- FIRE PROTECTION/SUPPRESSION SYSTEMS SHALL BE DESIGNED & BUILT PER NFPA 13 AND APPLICABLE BUILDING CODES (I.E. MICHIGAN BUILDING CODES, NFPA CODES, ETC.).
- DESIGN & BUILD FIRE PROTECTION/SUPPRESSION SUB-CRONTACTOR (F.S.) SHALL PROVIDE REVISION TO EXISTING BUILDING'S AUTOMATIC WET PIPE SPRINKLER SYSTEM INCLUDING ALL PIPING, OFFSETS, FITTINGS, VALVES, DRAINS, TEST CONNECTIONS, SPRINKLER HEADS, WIRE GUARDS, ETC. AS REQUIRED TO PROTECT THE PROJECT WORK AREA INCLUDING: NEW GHS COMMONS STORAGE ROOM BELOW EXISTING STAIR LANDING.
- F.S. SHALL PREPARE SHOP DRAWINGS, INCLUDING HYDRAULIC CALCULATIONS, SIGNED/SEALED BY A LICENSED PROFESSIONAL ENGINEER EXPERIENCED IN FIRE PROTECTION SYSTEM DESIGN, AND SUBMIT TO AHJ FOR APPROVAL PRIOR TO CONSTRUCTION. VERIFY AVAILABLE WATER PRESSURE/FLOW WITH LOCAL MUNICIPAL WATER UTILITY. VERIFY OCCUPANCY TYPES WITH ARCHITECTURAL PLANS.
- COORDINATE THE INSTALLATION OF FIRE SUPPRESSION WORK WITH ALL OTHER TRADES. CONTRACTOR SHALL VERIFY ALL MECHANICAL PLUMBING AND ELECTRICAL CLEARANCES PRIOR TO FABRICATION OF ANY NEW WORK. PIPING SHALL NOT BE LOCATED DIRECTLY OVER ELECTRICAL EQUIPMENT AND PANELS, OR INTERFERE WITH ELECTRICAL/MECHANICAL EQUIPMENT CLEARANCE SPACES. COORDINATE EQUIPMENT CLEARANCES WITH OTHER TRADES. LOCATE SPRINKLER HEADS CENTERED IN CEILING TILES IN (2) DIRECTIONS UNLESS NOTED OTHERWISE. REFER TO ARCHITECTURAL REFLECTED CEILING PLAN FOR CEILING TYPES.
- REFER TO ARCHITECTURAL PLANS FOR INFORMATION ON LOCATION/TYPE OF FIRE RATED ASSEMBLIES AND TO REFLECTED CEILING PLANS FOR CEILING TYPES AND HEIGHTS.
- PROVIDE ALL MISCELLANEOUS SUPPORTING STEEL, HANGERS, ETC., FOR THE PROPER INSTALLATION OF ALL FIRE SUPPRESSION SYSTEMS. PIPING SHALL NOT BE SUPPORTED FROM/BY EQUIPMENT OR EQUIPMENT CONNECTIONS.
- COORDINATE ALL FLOOR, WALL, AND ROOF PENETRATIONS, ETC. WITH ARCHITECTURAL/STRUCTURAL TRADES PRIOR TO ROUGH-IN.
- UNLESS OTHERWISE NOTED, EACH SUBCONTRACTOR SHALL BE RESPONSIBLE FOR SEALING ALL NEW PENETRATIONS THROUGH ALL WALLS WITH FIRE CAULK IN ACCORDANCE WITH CURRENT BUILDING CODE REQUIREMENTS.

FIRE SUPPRESSION ABBREVIATION LIST

ABBREVIATION	DESCRIPTION
AFF	ABOVE FINISHED FLOOR
ASR	AUTOMATIC SPRINKLER RISER
BFP	BACKFLOW PREVENTER
CONT	CONTINUATION OR CONTINUED
CONTR	CONTRACTOR
COORD	COORDINATE
DN	DOWN
(E)	EXISTING
E.C.	ELECTRICAL CONTRACTOR
ELEC	ELECTRICAL
ELEV	ELEVATION
F	FIRE SUPPRESSION PIPING
(F)	FUTURE
F.A.	FIRE ALARM SUBCONTRACTOR
FLR	FLOOR
F.S.	FIRE SUPPRESSION SUBCONTRACTOR
FT	FEET
GPH	GALLONS PER HOUR
GPM	GALLONS PER MINUTE
IN (")	INCHES
INL	INLET
MAX	MAXIMUM
MFR	MANUFACTURER
MIN	MINIMUM
MISC	MISCELLANEOUS
NC	NORMALLY CLOSED
NIC	NOT IN CONTRACT
NO	NORMALLY OPEN
NOM	NOMINAL
OC	ON CENTER/CENTER TO CENTER
PRI	PRIOR TO ROUGH-IN
PSIA	POUNDS PER SQUARE INCH (ABSOLUTE)
PSIG	POUNDS PER SQUARE INCH (GAUGE)
(R)	RELOCATED
SPHD	SPRINKLER HEAD
SPKR	SPRINKLER
SqFt	SQUARE FOOT/SQUARE FEET
TYP	TYPICAL
UON	UNLESS OTHERWISE NOTED
WG	WIRE GUARD

FIRE SUPPRESSION SYMBOL LIST

SYMBOL	DESCRIPTION
	PIPE ELBOW UP
	PIPE ELBOW DOWN
	DIRECTION OF FLOW
	UNION
	CONCENTRIC REDUCER
	ECCENTRIC REDUCER
	SPRINKLER HEAD
	PIPE CAP OR PLUG
	ISOLATION VALVE
	FIRE PROTECTION/SUPPRESSION PIPING

METHODS OF NOTATION

	CONSTRUCTION KEYED NOTE NUMBER
	DEMOLITION KEYED NOTE NUMBER
	EXISTING SYSTEM COMPONENT TO BE REMOVED
	NEW SYSTEM COMPONENT
	EXISTING SYSTEM COMPONENT TO REMAIN
	POINT OF NEW CONNECTION

FIRE PROTECTION/SUPPRESSION DRAWING INDEX

F1.1 - FIRE SUPPRESSION PLAN & NOTES

JLK Engineering
Project Number:
AEA 2401-01

The Drawing is Copyright
© J.L.K. Engineering, PLLC
5706 Cataract Ct., Gaylord, MI 49735 | P 989-448-4631
www.jlkeengineering.com

JLK ENGINEERING
Mechanical | Electrical | Plumbing

ANTHONY P. ESSON
ARCHITECT
PO BOX 479
GAYLORD, MICHIGAN
TELEPHONE: (989) 732-0585

DRAWING TITLE
FIRE SUPPRESSION PLAN & NOTES

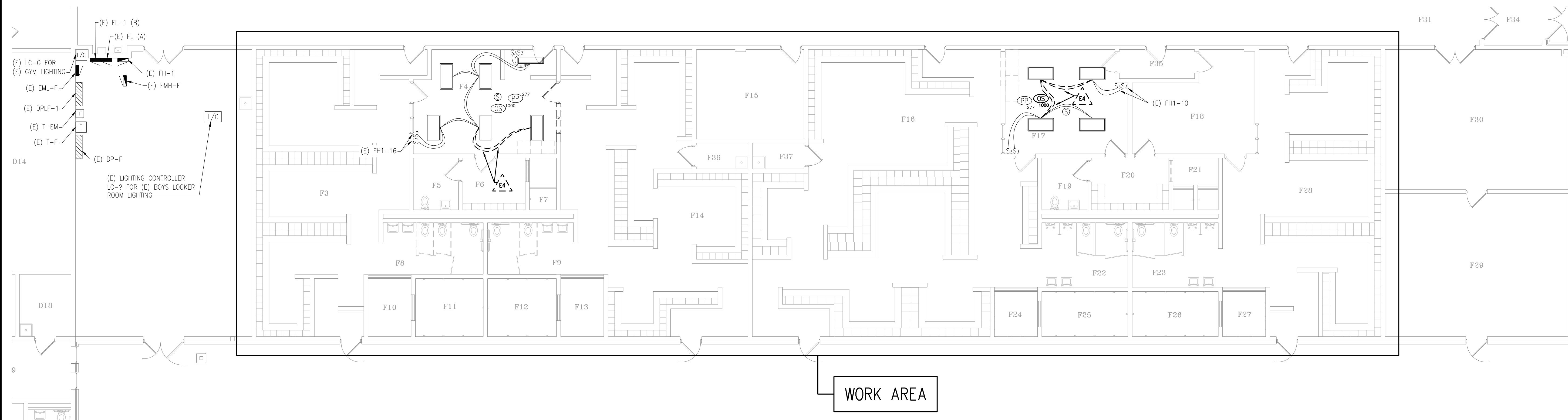
PROJECT TITLE
GAYLORD COMMUNITY SCHOOLS PROJECT SIES3.8 - 2024 SINKING FUND PROJECT'S
GHS ROOF AND LOCKER ROOM RENOVATIONS
GAYLORD, MICHIGAN

PROJECT NO.
284-20H-4

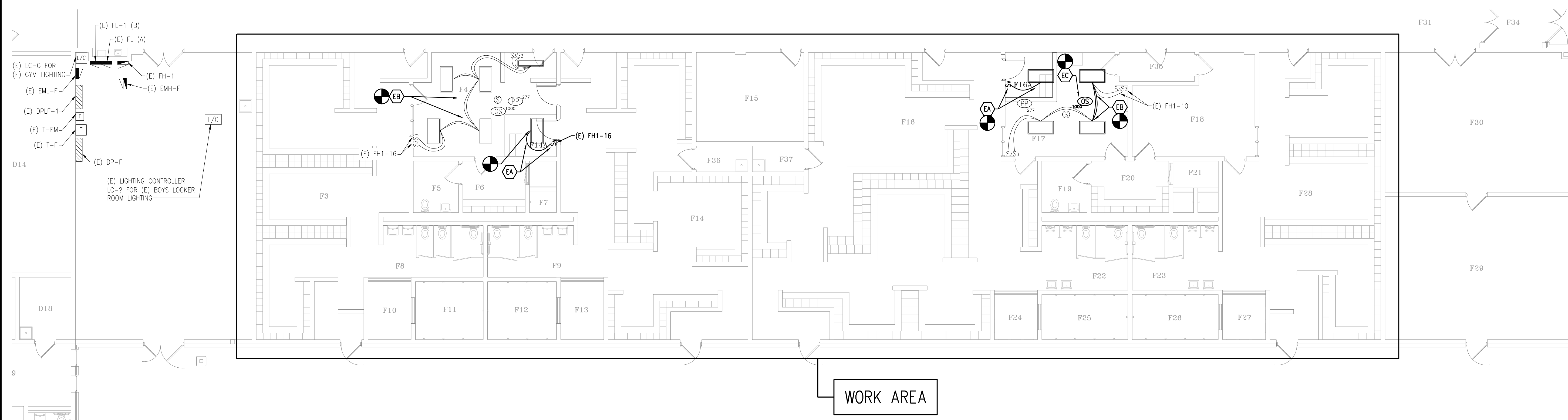
DATE
MARCH 1, 2024

SHEET
F1.1

JLK Engineering 5706 Cataract Ct., Gaylord, MI 49735 | P 989-448-4631 | www.jlkeengineering.com



PLAN NORTH NORTH
ELECTRICAL LIGHTING DEMOLITION PLAN
 SCALE: 1/8" = 1'-0"



PLAN NORTH NORTH
ELECTRICAL LIGHTING NEW WORK PLAN
 SCALE: 1/8" = 1'-0"

- KEYED ELECTRICAL DEMOLITION NOTES:**
- EA REMOVE (E) RECEPTACLE AND MODIFY (E) CIRCUITING AS REQUIRED TO ACCOMMODATE NEW CHANGING PARTITIONS, REFER TO NEW WORK POWER PLAN.
 - EB EXISTING (E) TELECOM/DATA OUTLETS/WIRING (BEING REMOVED/RELOCATED BY OWNER) AND COVER WITH NEW STAINLESS STEEL COVERPLATES.
 - EC CAREFULLY REMOVE (E) CLOCK (RECESSED IN EXISTING CMU WALL) AND PREPARE TO RELOCATE (R) AS REQUIRED TO ACCOMMODATE THE NEW CHANGING PARTITIONS, REFER TO NEW WORK POWER PLAN.
 - ED REMOVE EXISTING (E) LIGHTING CIRCUITING AS REQUIRED TO ACCOMMODATE NEW SWITCH FOR NEW CHANGING PARTITIONS, REFER TO NEW WORK LIGHTING PLAN.

- KEYED ELECTRICAL CONSTRUCTION NOTES:**
- EA NEW VACANCY WALL SWITCH TO CONTROL (E) TROFFER LIGHT FIXTURE, FEED FROM (E) LIGHTING CKT (277V).
 - EB RECONNECT (E) LIGHTING CKT (277V) TO (E) LIGHT FIXTURES AS REQUIRED TO ACCOMMODATE THE NEW PARTITIONS.
 - EC RELOCATE (E) CEILING MOUNTED OCCUPANCY SENSOR (OS) AS REQUIRED TO ACCOMMODATE THE NEW PARTITIONS.
 - ED RELOCATE (E) CLOCK (RECESSED TYPE) & EXTEND/RECONNECT TO (E) CLOCK CKTING AS REQUIRED TO ACCOMMODATE THE NEW PARTITIONS. COORDINATE NOTCHING OUT (E) CMU WALL WITH MASONRY TRADES.

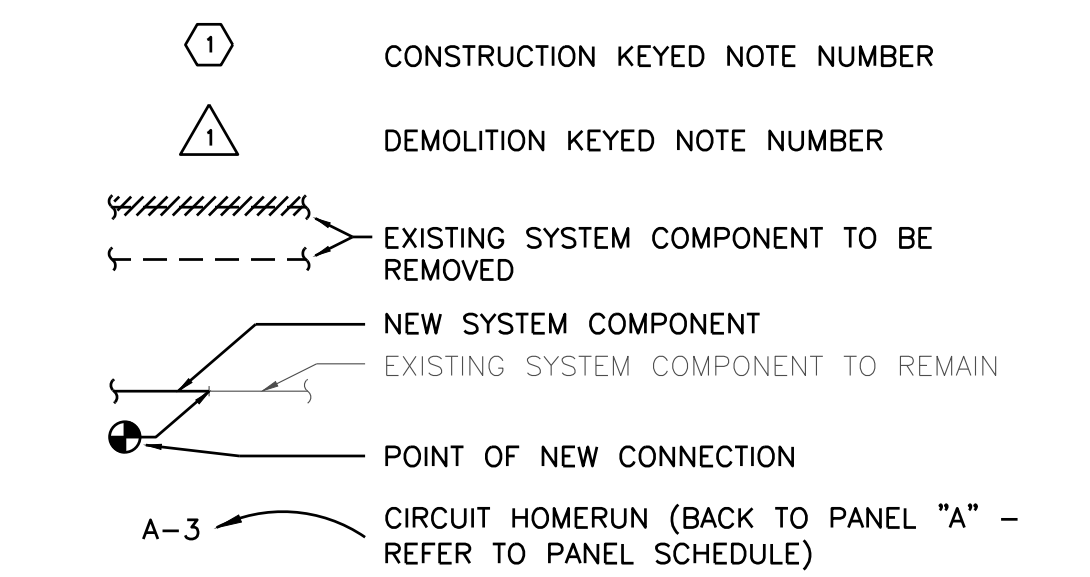
ELECTRICAL ABBREVIATION LIST

ABBREVIATION	DESCRIPTION	ABBREVIATION	DESCRIPTION
A	AMPS	LC	LIGHTING CONTROLLER
AFF	ABOVE FINISHED FLOOR	LP	LIGHTING PANEL
BKR	BREAKER	M.C.	MECHANICAL CONTRACTOR
C	CONDUIT	MCA	MINIMUM CIRCUIT AMPS
CB	CIRCUIT BREAKER	MDP	MAIN DISTRIBUTION PANEL
CKT	CIRCUIT	MFS	MAX FUSE SIZE
COORD	COORDINATE	MLO	MAIN LUGS ONLY
DISC	DISCONNECT	MTD	MOUNTED
DP	DISTRIBUTION PANEL	MTR	MOTOR
DWG	DRAWING	N.E.C.	NATIONAL ELECTRIC CODE
(E)	EXISTING	NTS	NOT TO SCALE
E.C.	ELECTRICAL CONTRACTOR	P-A	PANEL "A"
EF	EXHAUST FAN	P.C.	PLUMBING CONTRACTOR
EML	EMERGENCY LIGHT	PRI	PRIOR TO ROUGH-IN
EMT	ELECTRICAL METALLIC TUBING	(R)	RELOCATED
(F)	FUTURE	RECEPT	RECEPTACLE
F.A.	FIRE ALARM SUBCONTRACTOR	SD	SMOKE DETECTOR
F.C.	FIRE SUPPRESSION SUBCONTRACTOR	SPEC	SPECIFICATION
FLA	FULL LOAD AMPS	SW	SWITCH
FU	FUSE	TELECOM	TELECOMMUNICATIONS
GFI	GROUND FAULT INTERRUPTER	TYP	TYPICAL
GRD	GROUND	UON	UNLESS OTHERWISE NOTED
GRS	GALVANIZED RIGID STEEL	U/G	UNDERGROUND (BELOW GRADE)
HOA	HAND-OFF-AUTO	V	VOLTS
HP	HORSEPOWER	W	WATTS
HZ	HERTZ	WG	WIRE GUARD
IG	ISOLATED GROUND	WP	WEATHERPROOF
JB	JUNCTION BOX	XFMR	TRANSFORMER
KVA	KILO VOLT-AMPERES		
KW	KILOWATT		

STANDARD MOUNTING HEIGHTS

- CONVENIENCE AND SPECIAL PURPOSE RECEPTACLE OUTLETS, TELE/DATA AND COMMUNICATIONS OUTLETS, NOT OTHERWISE SPECIFIED:
- 18" AFF TO THE MIDDLE OF BOX
 - 16" AFF TO BOTTOM OF BOX IN CMU WALLS
- LIGHT SWITCHES, MOTOR CONTROL DEVICES, AND FIRE ALARM PULL STATIONS, NOT OTHERWISE SPECIFIED:
- 48" AFF TO THE MIDDLE OF BOX
 - 48" AFF TO THE TOP OF BOX IN CMU WALLS
- T-STATS, TEMP. SENSORS, CO2 SENSORS, NOT OTHERWISE SPECIFIED:
- 48" AFF TO THE MIDDLE OF BOX
 - 48" AFF TO THE TOP OF BOX IN CMU WALLS
- FIRE ALARM HORNS, SPEAKERS, STROBES, AND COMBINATION DEVICES, NOT OTHERWISE SPECIFIED:
- 96" AFF (TO TOP OF BOX) OR 6" BELOW CEILING, WHICHEVER IS LESS - BUT NO LOWER THAN 80" AFF.
- GFI RECEPTACLES IN TOILET ROOMS AND JANITOR CLOSETS, NOT OTHERWISE SPECIFIED:
- 48" AFF TO TOP OF BOX.
- CLOCKS:
- COORDINATE WITH ARCHITECTURAL ELEVATIONS.

METHODS OF NOTATION



ELECTRICAL DRAWING INDEX

- E1.1 ELECTRICAL TITLE SHEET & LIGHTING PLANS
- E1.2 ELECTRICAL POWER PLANS & DETAILS

JLK Engineering
 Project Number: AEA 2401-01
 Mechanical | Electrical | Plumbing
 5766 Calumet Ct., Gaylord, MI 49735 | P: 989-448-4831
 www.jlkeengineering.com

ANTHONY P. ESSON
 ARCHITECT
 PO BOX 479
 GAYLORD, MICHIGAN
 TELEPHONE: (989) 732-0585

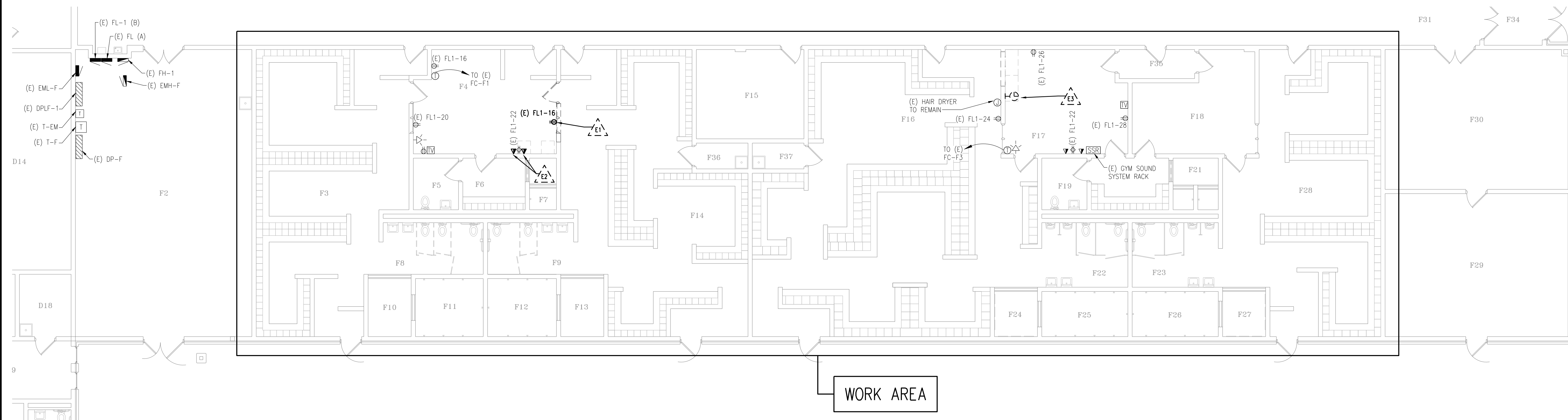
DRAWING TITLE
ELECTRICAL TITLE SHEET & LIGHTING PLANS

PROJECT TITLE
 GAYLORD COMMUNITY SCHOOLS PROJECT SF3.8 - 2024 SINKING FUND PROJECT'S
GHS ROOF AND LOCKER ROOM RENOVATIONS
 GAYLORD, MICHIGAN

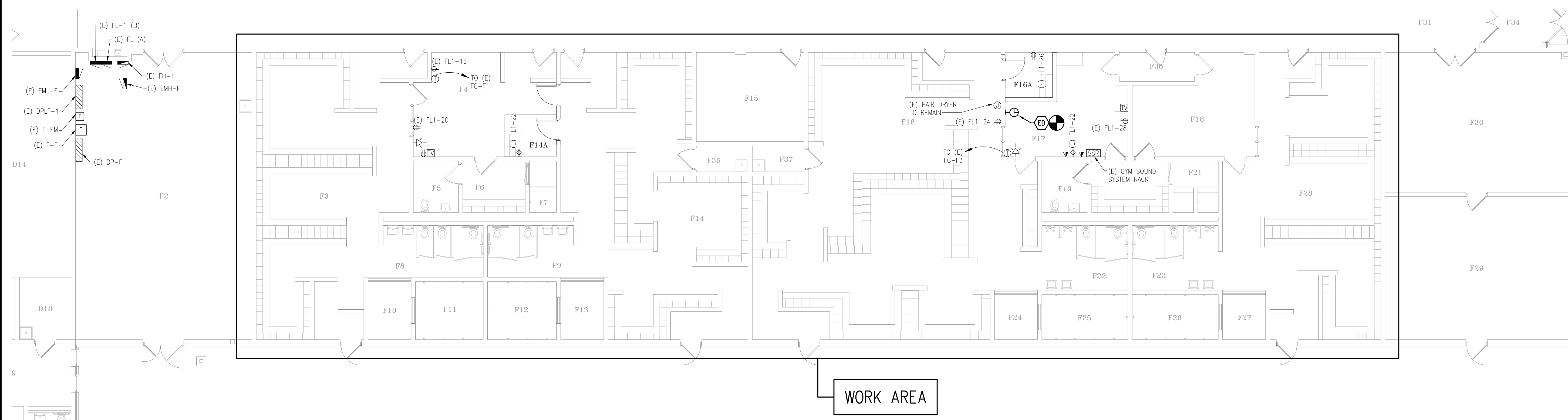
PROJECT NO.
284-20H-4

DATE
 MARCH 1, 2024

SHEET
E1.1



PLAN NORTH NORTH
ELECTRICAL POWER DEMOLITION PLAN
 SCALE: 1/8" = 1'-0"



PLAN NORTH NORTH
ELECTRICAL POWER NEW WORK PLAN
 SCALE: 1/8" = 1'-0"

- GENERAL ELECTRICAL POWER, AUXILIARY, & LIGHTING NOTES:**
- THESE DRAWINGS ARE DIAGRAMMATIC AND INDICATE THE GENERAL EXTENT OF WORK. THE CONTRACTOR SHALL PROVIDE AND INSTALL ALL MATERIALS (I.E. CONDUIT, WIRE, PULL BOXES, FIXTURES, ETC.) REQUIRED FOR A COMPLETE AND FUNCTIONAL SYSTEM.
 - ALL ELECTRICAL SYSTEMS SHALL BE PROVIDED/INSTALLED TO MEET APPLICABLE BUILDING CODES: MICHIGAN BUILDING CODE, MICHIGAN ELECTRICAL CODE, N.E.C., LIFE SAFETY CODE NFPA 101, MICHIGAN ENERGY CODE, ETC.
 - COORDINATE LOCATIONS AND MOUNTING HEIGHTS OF ALL OUTLETS WITH LOCATIONS/HEIGHTS OF FURNITURE, CABINETS, ETC. WITH ARCHITECTURAL ELEVATIONS AND OTHER TRADES.
 - COORDINATE THE INSTALLATION OF ELECTRICAL WORK WITH ALL OTHER TRADES. CONTRACTOR SHALL VERIFY ALL FIRE SUPPRESSION AND ELECTRICAL CLEARANCES PRIOR TO FABRICATION OF ANY NEW WORK. ELECTRICAL EQUIPMENT, WIRING, ETC. SHALL NOT INTERFERE WITH MECHANICAL EQUIPMENT CLEARANCE SPACES.
 - FIRE ALARM SYSTEM, WIRING, DEVICES, ETC. SHOWN ARE DIAGRAMMATIC AND INDICATE THE GENERAL SCOPE OF WORK. THE FIRE ALARM SYSTEM SHALL BE DESIGNED AND INSTALLED BY A CERTIFIED FIRE ALARM CONTRACTOR PER THE SPECIFICATIONS.
 - ALL CIRCUITS FOR POWER, LIGHTING, FIRE ALARM, ETC. SHALL BE INSTALLED IN CONDUIT AS SPECIFIED. ALL CIRCUITS SHALL BE CONCEALED IN WALLS, INCLUDING (E) WALLS. SURFACE MOUNTED RACEWAY SHALL NOT BE USED UNLESS NOTED OTHERWISE. APPROVAL FROM ARCHITECT/ENGINEER MUST BE OBTAINED PRIOR TO USING SURFACE MOUNTED CONDUIT.
 - COORDINATE EXACT FIXTURE LOCATIONS WITH ARCHITECTURAL PLANS (REFLECTED CEILING PLANS, BUILDING ELEVATIONS ETC.).
 - ELECTRICAL CONTRACTOR (E.C.) SHALL PROVIDE ALL ROUGH-INS (E.G. BOXES, CONDUIT, ETC.) FOR AUXILIARY ELECTRICAL SYSTEMS (E.G. FIRE ALARM, TELECOM, SECURITY, ETC.). COORDINATE REQUIREMENTS WITH AUXILIARY ELECTRICAL SUB-CONTRACTORS AND VERIFY WORK REQUIRED. ALL CONDUIT ROUGH-INS SHALL TERMINATE AT ACCESSIBLE LOCATIONS (I.E. ABOVE LAY-IN CEILINGS, IT ROOMS, ETC.).
 - PROVIDE WIRE GUARDS FOR CLOCKS, FIRE ALARM DEVICES, AND OTHER ITEMS SUBJECT TO ABUSE IN LOCKER ROOMS, STORAGE ROOMS, AND OTHER HIGH ABUSE AREAS.
 - EACH SUBCONTRACTOR IS RESPONSIBLE FOR REMOVING AND REPLACING ANY/ALL CEILING TILES AND/OR GRID ASSOCIATED WITH THEIR WORK. THE RESPONSIBLE CONTRACTOR SHALL REPLACE/REPAIR ALL CEILING TILES AND/OR GRID DAMAGED DURING THE CONSTRUCTION WITH NEW CEILING TILES.
 - UNLESS OTHERWISE NOTED, EACH SUBCONTRACTOR SHALL BE RESPONSIBLE FOR SEALING ALL NEW PENETRATIONS THROUGH ALL WALLS WITH FIRE CAULK IN ACCORDANCE WITH CURRENT BUILDING CODE REQUIREMENTS.
 - UNLESS OTHERWISE NOTED, EACH SUBCONTRACTOR SHALL BE RESPONSIBLE FOR ALL CUTTING, CORING, PATCHING ASSOCIATED WITH THEIR WORK. CUTTING, CORING, PATCHING WORK SHALL BE PERFORMED BY A QUALIFIED CONTRACTOR AND MATCH EXISTING OR NEW FINISHES.
 - ALL NIGHT LIGHTS, EMERGENCY LIGHTS, AND EXIT LIGHTS SHALL BE CIRCUITED TO UNSWITCHED/HOT LEG OF THE GENERAL LIGHTING CIRCUIT OF THE AREA SERVED BY THE NIGHT/EMERGENCY/EXIT LIGHTS.
 - CONTRACTOR SHALL DESIGN/PROVIDE/INSTALL LIGHTING CONTROLS (I.E. OCCUPANCY/VACANCY SENSORS, DAYLIGHT SENSORS, LIGHTING RELAY CONTROL PANELS, OVERRIDE SWITCHES, ETC.) AS REQUIRED TO MEET THE MICHIGAN ENERGY CODE (CHAPTER 9 OF ANSI/ASHRAE/IESNA STANDARD 90.1-2013).

- GENERAL ELECTRICAL DEMOLITION NOTES:**
- THESE DRAWINGS ARE DIAGRAMMATIC AND INDICATE THE GENERAL EXTENT OF THE WORK. THE EXTENT OF DEMOLITION WORK SHALL BE AS REQUIRED BY THE NEW WORK.
 - CONTRACTOR SHALL VISIT THE SITE AND FAMILIARIZE THEMSELVES WITH THE EXISTING SYSTEMS/EQUIPMENT PRIOR TO ISSUING HIS BID. ALL EXISTING PANEL/WIRE/LIGHT SIZES AND ROUTINGS SHOWN ARE APPROXIMATE AND SHOULD BE FIELD VERIFIED.
 - ALL ELECTRICAL ITEMS TO BE REMOVED SHALL BE REMOVED COMPLETE WITH ALL RELATED ITEMS INCLUDING, BUT NOT LIMITED TO, WIRES, CONDUITS, SUPPORTS, FIXTURES, LAMPS, ETC. REMOVED ITEMS SHALL BE LEGALLY DISPOSED OF OFF SITE.
 - ANY INTERRUPTION OF EXISTING SERVICES AND/OR EQUIPMENT SHALL BE PERFORMED AT A TIME APPROVED, BY THE OWNER OR OWNER'S REPRESENTATIVE, AT LEAST (7) DAYS IN ADVANCE SO AS NOT TO INTERFERE WITH THE PRESENT BUILDING OPERATION.
 - CONTRACTOR SHALL COORDINATE ALL REMOVAL AND/OR RELOCATION WITH THE EXTENT OF THE NEW WORK AND WITH ALL OTHER TRADES INVOLVED.
 - INSTALL STAINLESS STEEL BLANK COVER PLATES AT ALL LOCATIONS WHERE DEVICES (SWITCHES, RECEPTACLES, FIRE ALARM, ETC.) ARE TO BE REMOVED.
 - EACH SUBCONTRACTOR IS RESPONSIBLE FOR REMOVING AND REPLACING ANY/ALL CEILING TILES AND/OR GRID ASSOCIATED WITH THEIR WORK. THE RESPONSIBLE CONTRACTOR SHALL REPLACE/REPAIR ALL CEILING TILES AND/OR GRID DAMAGED DURING THE CONSTRUCTION WITH NEW CEILING TILES.
 - EACH SUBCONTRACTOR SHALL BE RESPONSIBLE FOR ALL CUTTING, CORING, PATCHING ASSOCIATED WITH THEIR WORK. CUTTING, CORING/PATCHING WORK SHALL BE PERFORMED BY A QUALIFIED CONTRACTOR AND MATCH EXISTING OR NEW FINISHES.

SYMBOL	DESCRIPTION	SYMBOL	DESCRIPTION	SYMBOL	DESCRIPTION
(FA)	FIXTURE TYPE	(M)	SINGLE PHASE MOTOR	(CB)	CIRCUIT BREAKER
(RL)	RECESSED LIGHT FIXTURE (2x4)	(3M)	THREE PHASE MOTOR	(SW)	SWITCH
(RE)	RECESSED EMERGENCY LIGHT FIXTURE (2x4)	(NF)	NON-FUSABLE DISCONNECT SWITCH	(ND)	NODE
(SM)	SURFACE MOUNTED LIGHT FIXTURE (2x4)	(FD)	FUSIBLE DISCONNECT SWITCH	(G)	GROUND
(SE)	SURFACE MOUNTED EMERGENCY LIGHT FIXTURE (2x4)	(HRS)	HORSE POWER RATED SWITCH	(A-3)	CIRCUIT HOMERUN TO PANEL "A" CIRCUIT #3
S	SINGLE POLE TOGGLE SWITCH	(J)	JUNCTION BOX	(LP)	LIGHTING PANEL (LP = <240V)
S2	TWO POLE TOGGLE SWITCH	(HP)	HARD WIRE POWER CONNECTION	(PP)	POWER PANEL (PP = >480V)
S3	3-WAY TOGGLE SWITCH	(CU)	CONDUIT UP	(DP)	DISTRIBUTION PANEL
S4	4-WAY TOGGLE SWITCH	(CD)	CONDUIT DOWN	(MCC)	MOTOR CONTROL CENTER OR SWITCHBOARD
SV	VACANCY SENSOR WALL SWITCH	(R)	RECEPTACLE	(T)	TRANSFORMER
LC	LIGHTING CONTROLLER/CONTACTOR	(48")	DUPLEX RECEPTACLE MOUNTED AT 48" ABOVE FLOOR (UNLESS NOTED OTHERWISE) - SIMILAR FOR ISOLATED GROUND, EMERGENCY AND GFI RECEPTACLES	(T-STAT)	T-STAT (BY OTHERS) ROUGHED IN BY E.C. @ 52" AFF WITH CONDUIT PATHWAY TO EQUIPMENT CONTROLS CONNECTION - COORD. WITH MECHANICAL TRADES
OC	Ceiling or wall mounted occupancy sensor	(GFI)	DUPLEX RECEPTACLE - GROUND FAULT INTERRUPTER	(T-STAT)	TEMPERATURE SENSOR (BY OTHERS) ROUGHED IN BY E.C. @ 52" AFF WITH CONDUIT PATHWAY TO EQUIPMENT CONTROLS CONNECTION - COORD. WITH MECHANICAL TRADES
VP	Vacancy sensor power pack	(S)	DUPLEX RECEPTACLE ISOLATED GROUND	(S)	SPEAKER - CEILING MOUNTED
		(TV)	TELEVISION OUTLET - ROUGH-IN ONLY	(T)	TELEVISION OUTLET - WALL MOUNTED
		(F)	MANUAL FIRE ALARM STATION	(S)	FIRE ALARM STROBE - WALL MOUNTED (xx CANDELA)
		(SB)	SMOKE DETECTOR	(S)	FIRE ALARM STROBE - CEILING MOUNTED (xx CANDELA)
		(IC)	FIRE ALARM CONTROL PANEL	(S)	FIRE ALARM HORN/STROBE - WALL MOUNTED (xx CANDELA)
		(SSR)	SOUND SYSTEM RACK	(S)	FIRE ALARM HORN/STROBE - CEILING MOUNTED (xx CANDELA)

- KEYED ELECTRICAL DEMOLITION NOTES:**
- (E) REMOVE (E) RECEPTACLE AND MODIFY (E) CIRCUITING AS REQUIRED TO ACCOMMODATE NEW CHANGING PARTITIONS, REFER TO NEW WORK POWER PLAN.
 - (E) EXISTING (E) TELECOM/DATA OUTLETS/WIRING (BEING REMOVED/RELOCATED BY OWNER) AND COVER WITH NEW STAINLESS STEEL COVERPLATES.
 - (E) CAREFULLY REMOVE (E) CLOCK (RECESSED IN EXISTING CMU WALL) AND PREPARE TO RELOCATE (R) AS REQUIRED TO ACCOMMODATE THE NEW CHANGING PARTITIONS, REFER TO NEW WORK POWER PLAN.
 - (E) REMOVE EXISTING (E) LIGHTING CIRCUITING AS REQUIRED TO ACCOMMODATE NEW SWITCH FOR NEW CHANGING PARTITIONS, REFER TO NEW WORK LIGHTING PLAN.

- KEYED ELECTRICAL CONSTRUCTION NOTES:**
- (EA) NEW VACANCY WALL SWITCH TO CONTROL (E) TROFFER LIGHT FIXTURE, FEED FROM (E) LIGHTING CKT (277V).
 - (EB) RECONNECT (E) LIGHTING CKT (277V) TO (E) LIGHT FIXTURES AS REQUIRED TO ACCOMMODATE THE NEW PARTITIONS.
 - (EC) RELOCATE (E) CEILING MOUNTED OCCUPANCY SENSOR (OS) AS REQUIRED TO ACCOMMODATE THE NEW PARTITIONS.
 - (ED) RELOCATE (E) CLOCK (RECESSED TYPE) & EXTEND/RECONNECT TO (E) CLOCK CKTING AS REQUIRED TO ACCOMMODATE THE NEW PARTITIONS. COORDINATE NOTCHING OUT (E) CMU WALL WITH MASONRY TRADES.

JLK Engineering
 Project Number: AEA 2401-01
 Mechanical | Electrical | Plumbing
 5706 Calumet Ct., Gaylord, MI 49735 | P 989-448-4631
 www.jlkeengineering.com

ANTHONY P. ESSON
 ARCHITECT
 PO BOX 479
 GAYLORD, MICHIGAN
 TELEPHONE: (989) 732-0585

DRAWING TITLE
ELECTRICAL POWER PLANS & DETAILS

PROJECT TITLE
 GAYLORD COMMUNITY SCHOOLS PROJECT SFS3.8 - 2024 SINKING FUND PROJECT'S
GHS ROOF AND LOCKER ROOM RENOVATIONS
 GAYLORD, MICHIGAN

PROJECT NO.
 284-20H-4

DATE
 MARCH 1, 2024

SHEET
E1.2