

Telephone: 989-790-9120  
Facsimile: 989-790-9063



---

## Addendum #3

---

Attn: Estimator	Date: June 5, 2020
From: Lisa Donahue, Project Administrator	Pages: 10 (including cover page)
Re: Harrison Community Schools 2017 Bond Projects – Series 2	Project: Larson Elementary Addition and Renovations
CC:	Proj. #: A19912

---

Architect's Addendum	8 Page
Bid Division Clarifications	1 Page

**PLEASE NOTE THE ADDRESS FOR BID SUBMISSIONS BELOW IS CORRECT. THE ADDRESS IN THE INSTRUCTIONS TO BIDDERS AND THE PROPOSAL FORM IN THE SPECIFICATIONS IS INCORRECT.**

**Bid Date is still scheduled for:**

**June 16<sup>th</sup> at 2:00 pm**

Harrison Community Schools  
Administration Office  
Rick Foote, Superintendent  
**224 W. Main Street  
Harrison, MI 48625**

## Bid Division Clarifications

### **Clarification by Bid Division:**

1. 021000 – Selective and Structural Demolition: The slab demolition for the new sanitary lines in the existing building area is located on drawing S1.0. This drawing will be updated in Addendum #4 to reflect some required changes in the sanitary piping and to align with the revised plumbing drawings to be issued in Addendum #4.
2. 030100 – Concrete: Project Inclusions note #13 refers to the depressed slab area indicated by keynote #8 on drawing S1.0 and keynote #13 on drawing S1.1.
3. 060000 – Carpentry: This bid division is responsible to furnish and install the 5/8" sheathing on the canopy framing as indicated on detail 6 on drawing A9.0.

1021 West Baraga Avenue,  
Marquette, Michigan 49855  
Phone (906) 228-4480 Fax (906) 228-7524

8571 W. Grand River Ave., Suite 600  
Brighton, Michigan 48816  
Phone: (810) 229-2701 Fax: (810) 229-6767

---

No:	3	Project Number:	15-555
Project:	Harrison Community Schools (2018 School Bond Projects – Series 2)	Date:	6/5/20

---

The contractor shall acknowledge receipt of all addenda by listing the number where indicated on the bid form.

Drawings, specifications, and / or proposals are herein amended, expanded, and / or modified, and become a part of the Contract Documents with the same effect as if incorporated in the original documents. Any contrary provisions contained, or referred to, in Drawings and / or Specifications, shall remain applicable unless overridden by this Addendum. Revised provisions herein shall include all labor, materials, methods, modifications, etc. required for the completion of the Work.

---

General:

1. Sheet P4.0 shall be removed from index. Sheet does not exist.
2. Controls contractors wanting to bid an approved "open" Tridium system that is compatible with KMC controls that currently exist within school campus, can provide written request for approval to engineer with statement proving that proposed controls will integrate using only one head-end and IP address, or secure controls (SC) access.

Specifications:

1. 087100 (Door Hardware)
  - a. Noted by other section 087113 (not included), Record Automatic Doors is approved manufacturer/product for Auto Door openers for project.
2. 101400 (Signage) – Clarification that cast plaques, project construction sign, and interior cut letters are not part of project scope, and should be omitted from this section.
3. 105113 (Metal Lockers) – Clarification that combo door locks are required for all lockers in project.
4. 106000 (Folding Partition Door) – Added Specification Section
5. 283100 (Fire Detection and Mass Notification)
  - a. Add Vigilant by G.E. as acceptable system and manufacturer.
  - b. Emergency light fixtures indicated on plans shall bypass any switching or sensors and go to full brightness upon initiation of fire alarm per NFPA101 2018 Section 7.8.1.2.2, Item 5.
6. 275100 (Integrated Electronic Communication and Clock Network)
  - a. Add Bogen Communications IP E7000 Intercom System as equal to Rauland Telecenter.
  - b. Add Primex Clocks as equal to Rauland Clocks.
  - c. Add Valcom gen 6 IP Intercom System as equal to Rauland Telecenter.
  - d. Clocks in classrooms and offices shall be secondary 13" analog.
  - e. Corridor clocks shall be secondary dual or single face 13" analog see plans for location of dual faced clock locations in corridors.
  - f. Multi-purpose and gym clocks shall be secondary 16" analog.
7. 271323 (Fiber Optic Cable)

- a. Provide 12 strand SM with LC connections between the MDF and IDF racks.

Drawings:

1. Sheet A2.1 (New Work Floor Plan – Area “B”)
  - a. Door 137.0 is noted on the door schedule, but is not noted on the floor plan. To clarify Door 137.0 is the left set of double doors next to the right set of double doors 137.1 shown on plan.
  - b. Door 208.1 is noted on the door schedule, but not labeled on the floor plan. To clarify, Door 208.1 is the single man door between Staff Work Room (208) and Conference Room.
2. Sheet A2.3 (Enlarged Toilet Room plans) – Omit sanitary napkin disposal in Men’s Toilet Room 130.
3. Sheet A4.0 (Door Hardware Schedule) – Door 102.0 on the door schedule is shown with multiple door hardware sets, to clarify, Hardware Set (01) is the correct hardware set for this door.
4. Sheet E3.0 – Power & Communication Plan – Area ‘A’ (New Work)
  - a. Provide two (2) 2x2 ceiling tile drop-in style 70 Volt mono speakers per classroom with a 70 Volt amplifier located at teaching station location. Provide speaker wiring as required between amplifier and each speaker location
  - b. Keynote #13 – Exterior rated IP cameras shall be Axis # P3367-VE with pendant and mount to match existing in district. Cameras shall be provided and installed by Cabling bid division contractor per Addendum #2.
  - c. Keynote #14 – Interior IP cameras shall be Axis # M3066-V to match existing in district. Cameras shall be provided and installed by Cabling bid division contractor per Addendum #2.
  - d. Keynote #3 – Mounting plate is to be provided and installed by Electrical Contractor. Owner is providing projector and mounting projector to mounting plate.
  - e. Keynote #26 – Provide Honeywell #OM31BHOND mini mullion mount card reader, 13.56mhz & 125khz to match existing system in district in lieu of previously specified.
  - f. Keynote #27 – Provide Honeywell # NX1MPS one door, metal enclosure, battery & power supply to match existing system in district in lieu of previously specified
5. Sheet E3.1 – Power & Communication Plan – Area ‘B’ (New Work)
  - a. Provide two (2) 2x2 ceiling tile drop-in style 70 Volt mono speakers per classroom with a 70 Volt amplifier located at teaching station location. Provide speaker wiring as required between amplifier and each speaker location.
  - b. Keynote #21 – Exterior rated IP cameras shall be Exterior rated IP cameras shall be Axis # P3367-VE with pendant and mount to match existing in district. Cameras shall be provided and installed by Cabling bid division contractor per Addendum #2.
  - c. Keynote #22 – Interior IP cameras shall be Axis # M3066-V to match existing in district. Cameras shall be provided and installed by Cabling bid division contractor per Addendum #2.
  - d. Keynote #26 – See attached speaker mounting detail.
  - e. Keynote #3 – Mounting plate is to be provided and installed by Electrical Contractor. Owner is providing projector and mounting projector to mounting plate.
  - f. Keynote #40 – Provide Honeywell #OM31BHOND mini mullion mount card reader, 13.56mhz & 125khz to match existing system in district in lieu of previously specified.
  - g. Keynote #41 – Provide Honeywell # NX1MPS 1 door, metal enclosure, battery & power supply to match existing system in district in lieu of previously specified
  - h. Keynote #42 – Provide Honeywell #OM31BHOND mini mullion mount card reader, 13.56mhz & 125khz to match existing system in district in lieu of previously specified.
  - i. Keynote #43 – Provide Honeywell # NX1MPS one door, metal enclosure, battery & power supply and #NXD2 two door add on board to match existing system in district in lieu of previously specified.
6. Sheet ES1.0 – Electrical Site Plan
  - a. Keynote #2 – Existing fiber optic line shall be relocated by owner, under separate contract,

see also Keynote #13 for new route.

- b. Keynote #12 – Existing phone line shall remain.
- c. Keynote #14 – Delete Keynote and new phone line shown. Existing phone line shall remain.
- d. Keynote #11 – Provide 6" conduit out from transformer pad to utility pole for utility company primary cable installation. See Power Riser Diagram on sheet E5.0 for secondary feeder requirements between utility transformer and main distribution panel (MDP).

7. Sheet ES1.0 – Larson Elementary Schedules

- a. Lighting Fixture Schedule, All fixture models to be provided with emergency transfer relays shall include dry contact on transfer relay so that fixtures can be connected to building fire alarm system. Emergency fixtures shall bypass any switching or sensors and go to full brightness upon initiation of fire alarm per NFPA101 2018 Section 7.8.1.2.2, Item 5.

Attachments: Speaker Mounting Detail, 106000 Folding Door Partition

END OF ADDENDUM

---

**SECTION 106000  
FOLDING PARTITION DOOR**

**PART 1 – GENERAL**

1.01 DESCRIPTION

A. General

1. Furnish and install operable partitions and suspension system. Provide all labor, materials, tools, equipment, and services for operable walls in accordance with provisions of contract documents.

1.02 RELATED WORK BY OTHERS

- A. Preparation of opening will be by General Contractor. Any deviation of site conditions contrary to approved shop drawings must be called to the attention of the architect.
- B. All header, blocking, support structures, jambs, track enclosures, surrounding insulation, and sound baffles as required in 1.04 Quality Assurance.
- C. Prepunching of support structure in accordance with approved shop drawings.
- D. Paint or otherwise finishing all trim and other materials adjoining head and jamb of operable partitions.

1.03 SUBMITTALS

- A. Complete shop drawings are to be provided prior to fabrication indicating construction and installation details. Shop drawings must be submitted within 60 days after receipt of signed contract.

1.04 QUALITY ASSURANCE

- A. Preparation of the opening shall conform to the criteria set forth per ASTM E557 Standard Practice for Architectural Application and Installation of Operable Partitions
- B. The partition STC (Sound Transmission Classification) shall be achieved per the standard test methods ASTM E90.
- C. Noise isolation classifications shall be achieved per the standard test methods ASTM E336 and ASTM E413.
- D. Noise Reduction Coefficient (NRC) ratings shall be per ASTM C423.
- E. Rack testing for 10 years. (tensional strength stress test)
- F. The manufacturer shall have a quality system that is registered to the ISO 9001 standards.

1.05 PRODUCT DELIVERY, STORAGE, AND HANDLING

- A. Proper storage of partitions before installation and continued protection during and after installation will be the responsibility of the General Contractor.

1.06 WARRANTY

- A. Partition system shall be guaranteed for a period of two years against defects in material and workmanship, excluding abuse.

**PART 2 – PRODUCTS**

2.01 ACCEPTABLE MANUFACTURERS

- A. Upon compliance with all of the criteria specified in this section, Manufacturers wishing to bid products equal to the product specified must submit to the architect 10 days prior to bidding complete data in support of compliance and a list of three past installations of products similar to those listed. The submitting manufacturer guarantees the proposed substituted product complies with the performance items specified and as detailed on the drawings.

## 2.02 MATERIALS

- A. Product to be top supported Series 631 individual, omni-directional panels as manufactured by Hufcor Inc.
1. Panels shall be nominally 3" [76] thick and to 48" [1219] in width.
  2. Panel faces shall be laminated to appropriate substrate to meet the STC requirement in 2.04 Acoustical Performance.
    - a. Optional substrate material (Not all substrates are available for all STC ratings. Consult your Hufcor Distributor for more information):
      - Steel
      - Non-steel
      - Medium Density Fiberboard
    - b. Horizontal Splice: Heights over 16'3" [4953] with non-steel faces require a structural splice placed at approximately 12'3" [3734] from the floor.
  3. Frames shall be of 16 gauge [1.42mm] painted steel with integral factory applied aluminum vertical edge and face protection. Optional: Face finish shall wrap around the vertical panel edges and provide no protective vertical face trim.
  4. Vertical sound seals shall be of tongue and groove configuration, ensure panel-to-panel alignment and prevent sound leaks between panels.
  5. Horizontal top seals shall be fixed continuous contact dual 4-finger vinyl and bottom seals. Not available with automatic bottom seals.)
  6. Horizontal bottom seals shall be retractable, provide up to 2" [50] nominal perating clearance, and exert downward force when extended. Optional Seals:
    - a. Horizontal bottom seals shall be automatic and provide up to 2" [50] nominal operating clearance. Consult your Hufcor Distributor for more information.)
    - b. Horizontal bottom seals shall be fixed continuous contact dual 4-finger vinyl.
  7. Horizontal trim shall be of aluminum.
- B. Weight of the panels shall be 5.7-10.2 lbs. per sq. ft. [27.8-49.8kg/sq.m] based on options selected.
- C. Suspension system:
1. Track shall be of clear anodized architectural grade extruded aluminum alloy 6063-T6. Track design shall provide precise alignment at the trolley running surfaces and provide integral support for adjoining ceiling, soffit, or plenum sound barrier. Track shall be connected to the structural support by pairs of minimum 3/8" [10] dia. threaded steel hanger rods. Pairs of rods are directly attached to the track, no single point attachment allowed. L, T, or X intersections shall be factory assembled and welded.
    - a. Each panel shall be supported by two 2-wheeled counter-rotating horizontal carriers. Wheels to be of precision ground steel ball bearings

with heat treated and hardened races encased with molded polymer tires.

- (1) Optional Type 38 (for X, L, or T intersections and panels weighing up to 400 lbs. [182 kg]): Each panel shall be supported by two 1-wheel horizontal rotating carriers. Wheel to be of precision ground steel ball bearings with heat treated and hardened races encased with molded polymer tires.
  - (2) Optional Type 38 (for curves and diverts and panels weighing up to 600 lbs. [272 kg]): Each panel shall be supported by two 4-wheel carriers.
2. Plenum closure (by others): Design of plenum closure must permit lifting out of header panels to adjust track height. Plenum closure required for optimum sound control of partition.
  3. Option (available for select layouts-consult your Hufcor Distributor): The panels shall be supported by the Unispan pre-engineered truss and post system fabricated of steel and aluminum. Unispan is attached to the building structure for lateral support only. The load of the truss and partition is supported by end columns. The columns are connected to floor plates that distribute the load of the system at the floor.

D. Finishes

1. Face finish shall be:
  - a. Factory applied reinforced vinyl fabric with woven backing, weighing not less than 20 oz. per lineal yard [620 g/m]. Color shall be selected from manufacturer's standard color selectors.
  - b.
2. Exposed metal trim and seal color shall be (select from Hufcor's Standard Trim selector):
  - c. Gray (standard)
3. Aluminum track shall be clear anodized

E. Available Accessories/Options: N/A

2.03 OPERATION

- A. Panels are manually moved from the storage area, positioned in the opening, and seals set.
- B. Retractable Horizontal Seals
  1. Retractable horizontal seals shall be activated by a removable quick-set operating handle located approximately 42" [1067] from the floor in the panel edge. Seal activation requires approximately 15 lbs. [6.8 kg] of force per panel and approximately a 190 degree turn of the removable handle. Top and bottom retractable seals on each panel shall be operated simultaneously.



- C. Automatic Floor Seals
  - 1. Horizontal seals shall be activated by pressing the edge of the panel into the edge of the adjacent panel or wall.
  - 2. Seal activation requires approximately 15 lbs. [6.8 kg] of force per panel.
- D. Final partition closure to be by (select one):
  - 1. Lever closure panel with expanding jamb which compensates for minor wall irregularities and provides a minimum of 250 lbs. [113.4 kg] seal force against the adjacent wall for optimum sound control. The jamb activator shall be located approximately 45" [1143] from the floor in the panel face and be accessed from either side of the panel. The jamb is equipped with a mechanical rack and pinion gear drive mechanism and shall extend 4"-6" [100-152] by turning the removable operating handle.

#### 2.04 ACOUSTICAL PERFORMANCE

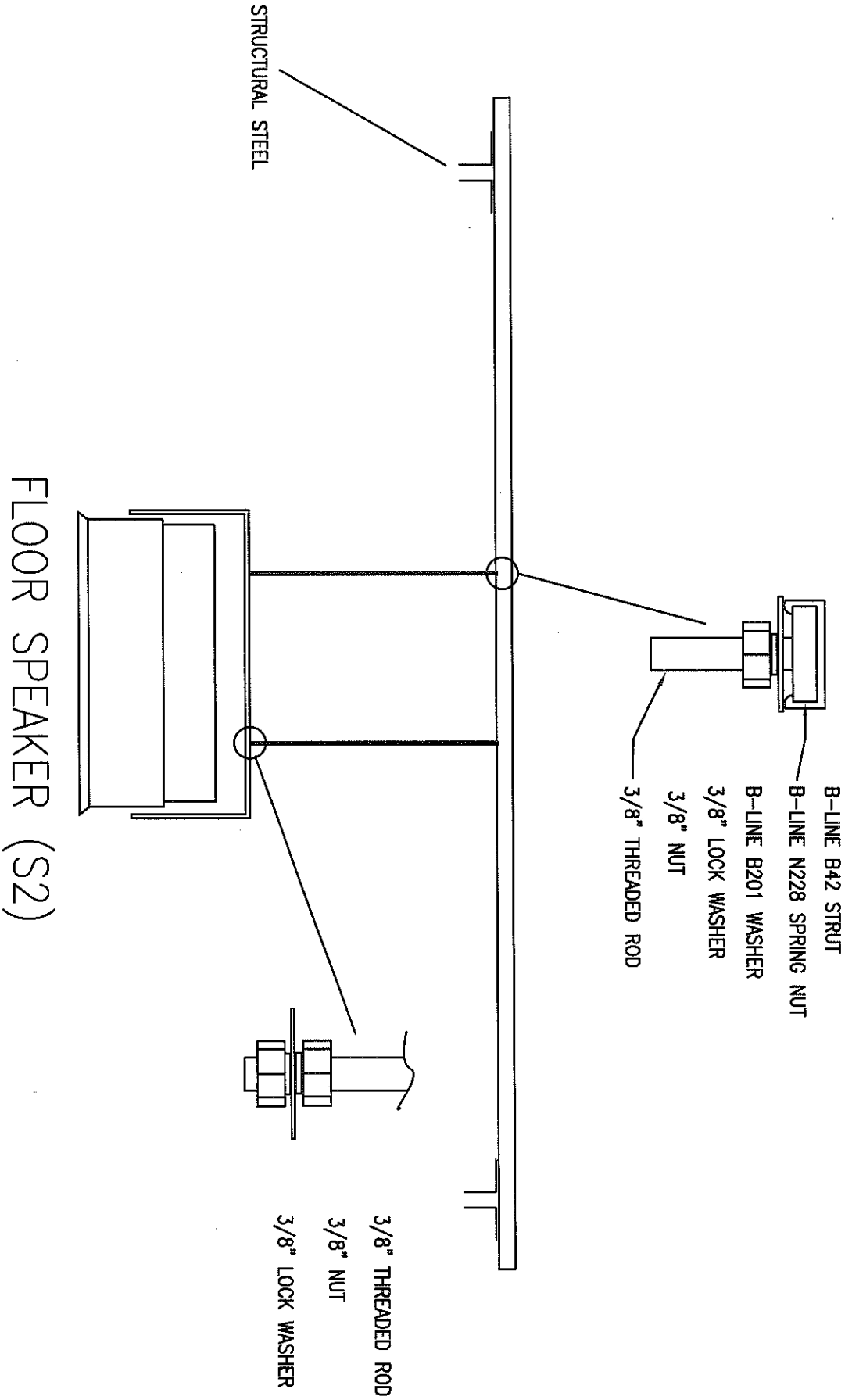
- A. Acoustical performance shall be tested at a laboratory accredited by the National Voluntary Laboratory Accreditation Program (NVLAP) and in accordance with ASTM E90 Test Standards. Standard panel construction shall have obtained an STC rating of 47
  - 1. Complete, unaltered written test report is to be made available upon request.

### PART 3 – EXECUTION

#### 3.01 EXECUTION

- A. Installation. The complete installation of the operable wall system shall be by an authorized factory-trained installer and be in strict accordance with the approved shop drawings and manufacturer's standard printed specifications, instructions, and recommendations.
- B. Cleaning
  - 1. All track and panel surfaces shall be wiped clean and free of handprints, grease, and soil.
  - 2. Cartoning and other installation debris shall be removed to onsite waste collection area, provided by others.
- C. Training
  - 1. Installer shall demonstrate proper operation and maintenance procedures to owner's representative.
  - 2. Operating handle and owners manuals shall be provided to owner's representative.

END OF SECTION



**GYMNASIUM/MULTI-PURPOSE SPEAKER MOUNTING DETAIL**

N.T.S.