



Executive Offices

Executive One Building
4835 Towne Centre Road
Suite 203
Saginaw, MI 48604

Phone: (989) 790-9120
Fax: (989) 790-9053

Corporate Services

Field Operations
Professional Services
Restoration Services

1494 North Graham Road
Freeland, MI 48623

Phone: (989) 790-9120
Fax: (989) 781-0748

West Michigan Office

4403 Cascade Rod, SE
Suite 5
Grand Rapids, MI 49546

Phone: (616) 949-6868
Fax: (616) 949-4477

www.wolgastcorporation.com

ADDENDUM #2

Oscoda Area Schools 2024 Bond Projects

March 24, 2025

Bid Package No. 2 – New Community Center REBID General Trades, Roofing,
Flooring & Fire Suppression

Contents:

1. The Collaborative Addendum #2 Write-up
2. Please note that the addendums from when this project originally bid have been added to the bid documents for your reference.
3. Clarification on the pre-bid meeting. It will be held on March 25, 2025 at 11:00 virtually. Link is included in the bid files on BuildingConnected.
4. Bid Clarifications
 - RFI 26 – Fieldhouse Sports Floor
 - RFI 27 – Alternate #2 Wall Padding
 - RFI 29 – Wood Ceiling
5. If you would like to attend the bid opening virtually and have any issues opening the link in the bid documents email Christie @ chuver@wolgast.com. Link is on word document included in the bid documents files as well.
6. The bid due date & time is unchanged.
7. Be sure to note receipt of this Addendum on your bid form.

RFI detail

#26 Fieldhouse Sport Floor



Status Closed

Created on Mar 7, 2025 by **Matt Moser** (WOLGAST CORPORATION)

RFI type Default RFI workflow

Ball in court **Matt Moser** (WOLGAST CORPORATION)

Answered Mar 18, 2025 by **Dustin DeWitt** (The Collaborative)

Question

Could Duraflex Elite be considered for a alternate product in the fieldhouse for the sports flooring?

Official response

Dustin DeWitt (The Collaborative): Duraflex Elite has been added to the acceptable manufactures list for the rebidding of the sports flooring documentation.

By Dustin DeWitt (The Collaborative) - Mar 18, 2025, 1:54 PM EDT

Impact

Cost impact -

Schedule impact -

Other attributes

Priority Normal

Discipline -

Category -

Location -

Location details -

External id -

Co-reviewer(s)

Spec Section -

Construction Phase Pre-Bid

RFI detail

#27 Alternate A2 Wall Padding



Status	Closed
Created on	Mar 20, 2025 by Matt Moser (WOLGAST CORPORATION)
RFI type	Default RFI workflow
Ball in court	Matt Moser (WOLGAST CORPORATION)
Answered	Mar 20, 2025 by Matt Moser (WOLGAST CORPORATION)

Question

Addendum 2 from the previous bid calls for the General Trades contractor to install the wall padding in the field house. Section 116000 which includes the wall padding is the responsibility of Bid Division 116000 Recreation Equipment. General Trades would need to hire the contractor who is awarded Bid Division 116000 in order to perform this work.

Suggested answer

The alternate A2 will be removed in Pre-Bid Addendum # 1.

Official response

Matt Moser (WOLGAST CORPORATION): Alternate A2 will be removed in Pre-Bid Addendum # 1.

By Matt Moser (WOLGAST CORPORATION) - Mar 20, 2025, 11:26 AM EDT

Impact

Cost impact -

Schedule impact -

Other attributes

Priority Normal

Discipline -

Category -

Location -

Location details -

External id -

Co-reviewer(s)

-  **Christie Huver** (WOLGAST CORPORATION)
-  **Clinton Clark** (WOLGAST CORPORATION)
-  **Patrick Fritz** (WOLGAST CORPORATION)

Spec Section -

Construction Phase Pre-Bid

RFI detail

#29 Wood Ceiling



Status	Closed
Created on	Mar 21, 2025 by Matt Moser (WOLGAST CORPORATION)
RFI type	Default RFI workflow
Ball in court	Matt Moser (WOLGAST CORPORATION)
Answered	Mar 21, 2025 by Matt Moser (WOLGAST CORPORATION)

Question

Detail (4) on drawing A7.11 refers to a wood ceiling IWD1. On drawing A7.21 it is called out as Nydree, Maple T&G. We don't see a specification for it nor is it clear which trade is furnishing and installing it. Is it Division 060000 or 091000?

Official response

Matt Moser (WOLGAST CORPORATION): The wood ceiling will be the responsibility of General Trades.

By **Matt Moser** (WOLGAST CORPORATION) - Mar 21, 2025, 11:02 AM EDT

Official response attachments

[SUGAR CONST RFI #3.PDF](#), Mar 21, 2025, 11:02 AM EDT

Impact

Cost impact -

Schedule impact -

Other attributes

Priority Normal

Discipline -

Category -

Location -

Location details -

External id -

Co-reviewer(s)

Spec Section -

Construction Phase Pre-Bid

THE
COLLAB
ORATIVE

03/21/2025

ADDENDUM NO. 02

To the Drawings and Specifications for:

Oscoda Area Schools Community Center

107253

Owner Name: Oscoda Area Schools

Prepared By:

The Collaborative

Telephone: (419) 242-7405

Fax: (419) 242-7400

TO ALL BIDDERS:

This addendum supplements and amends the original drawings and specifications, and shall be taken into account in preparing proposals, and shall become a part of the contract documents. Receipt of this Addendum must be acknowledged in the Bid Form.

GENERAL

Question 01:

Answer 01:

Clarifications

- a. Resilient Athletic Flooring in the Fieldhouse has been changed to a poured product. See reissued spec section for acceptable manufactures
- b. All linework has been changed to be painted, see reissued finish plans

Specifications

Division 09:

Section 096566 - Resilient Athletic Flooring

Drawings

Architectural Drawings

Drawing A2.00

Item #1: Reduced heights of most doors

Drawing A7.20

Item #1: Keynotes for Sports Floor (SF) has been changed to a BOD Connor Sports poured floor product.

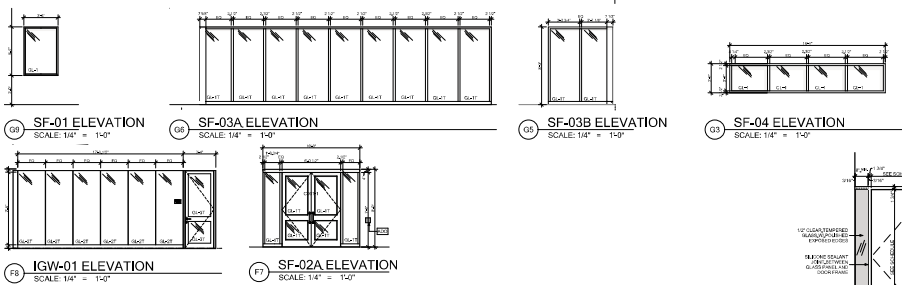
Item #2: Updated keynotes for all sports floor lines

Item #3: Updated restroom floor finishes

Drawing A7.21

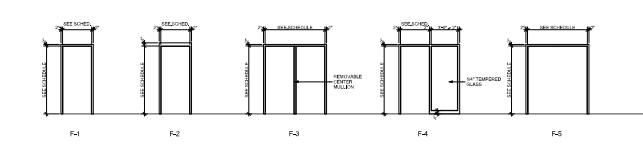
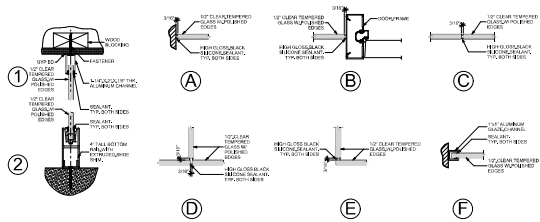
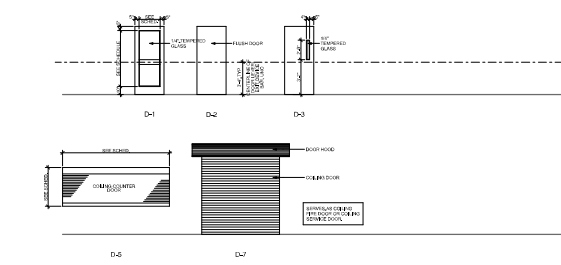
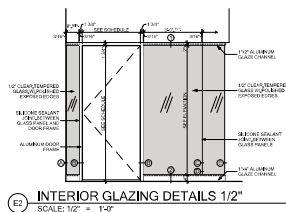
Item #1: Updated bathroom pattern fills to match updated floor finishes.

END OF ADDENDUM #21 (02 Written Pages, 03 Re-Issued Drawings, 01 Specification Section)



GLAZING GENERAL NOTES:

1. FILL GLAZING UNLESS CALLED OUT OTHERWISE
2. REFER TO SPECIFICATIONS FOR PERFORMANCE REQUIREMENTS
3. GLASS CLASSIFICATION:
 - GLASS 1: FILL GLAZING UNLESS OTHERWISE NOTED
 - GLASS 2: CLEAR GLAZING UNLESS OTHERWISE NOTED
 - GLASS 3: CLEAR GLAZING UNLESS OTHERWISE NOTED
 - GLASS 4: CLEAR GLAZING UNLESS OTHERWISE NOTED

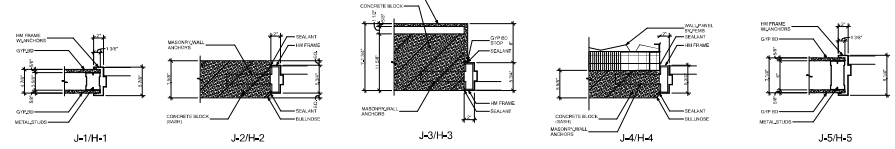


E1 INTERIOR GLAZING DETAILS 3"
SCALE: 3" = 1'-0"

DOOR SCHEDULE

NO.	SIZE	DOOR	FRAME			H	L	FINISH	TYPE PARTING	REMARKS
			SW	SL	HL					
D01	30	SW	SW	SW	SW	30	60	1	+	
D02	30	SW	SW	SW	SW	30	60	1	+	
D03	30	SW	SW	SW	SW	30	60	1	+	
D04	30	SW	SW	SW	SW	30	60	1	+	
D05	30	SW	SW	SW	SW	30	60	1	+	
D06	30	SW	SW	SW	SW	30	60	1	+	
D07	30	SW	SW	SW	SW	30	60	1	+	
D08	30	SW	SW	SW	SW	30	60	1	+	
D09	30	SW	SW	SW	SW	30	60	1	+	
D10	30	SW	SW	SW	SW	30	60	1	+	
D11	30	SW	SW	SW	SW	30	60	1	+	
D12	30	SW	SW	SW	SW	30	60	1	+	
D13	30	SW	SW	SW	SW	30	60	1	+	
D14	30	SW	SW	SW	SW	30	60	1	+	
D15	30	SW	SW	SW	SW	30	60	1	+	
D16	30	SW	SW	SW	SW	30	60	1	+	
D17	30	SW	SW	SW	SW	30	60	1	+	
D18	30	SW	SW	SW	SW	30	60	1	+	
D19	30	SW	SW	SW	SW	30	60	1	+	
D20	30	SW	SW	SW	SW	30	60	1	+	
D21	30	SW	SW	SW	SW	30	60	1	+	
D22	30	SW	SW	SW	SW	30	60	1	+	
D23	30	SW	SW	SW	SW	30	60	1	+	
D24	30	SW	SW	SW	SW	30	60	1	+	
D25	30	SW	SW	SW	SW	30	60	1	+	
D26	30	SW	SW	SW	SW	30	60	1	+	
D27	30	SW	SW	SW	SW	30	60	1	+	
D28	30	SW	SW	SW	SW	30	60	1	+	
D29	30	SW	SW	SW	SW	30	60	1	+	
D30	30	SW	SW	SW	SW	30	60	1	+	
D31	30	SW	SW	SW	SW	30	60	1	+	
D32	30	SW	SW	SW	SW	30	60	1	+	
D33	30	SW	SW	SW	SW	30	60	1	+	
D34	30	SW	SW	SW	SW	30	60	1	+	
D35	30	SW	SW	SW	SW	30	60	1	+	
D36	30	SW	SW	SW	SW	30	60	1	+	
D37	30	SW	SW	SW	SW	30	60	1	+	
D38	30	SW	SW	SW	SW	30	60	1	+	
D39	30	SW	SW	SW	SW	30	60	1	+	
D40	30	SW	SW	SW	SW	30	60	1	+	
D41	30	SW	SW	SW	SW	30	60	1	+	
D42	30	SW	SW	SW	SW	30	60	1	+	
D43	30	SW	SW	SW	SW	30	60	1	+	
D44	30	SW	SW	SW	SW	30	60	1	+	
D45	30	SW	SW	SW	SW	30	60	1	+	
D46	30	SW	SW	SW	SW	30	60	1	+	
D47	30	SW	SW	SW	SW	30	60	1	+	
D48	30	SW	SW	SW	SW	30	60	1	+	
D49	30	SW	SW	SW	SW	30	60	1	+	
D50	30	SW	SW	SW	SW	30	60	1	+	
D51	30	SW	SW	SW	SW	30	60	1	+	
D52	30	SW	SW	SW	SW	30	60	1	+	
D53	30	SW	SW	SW	SW	30	60	1	+	
D54	30	SW	SW	SW	SW	30	60	1	+	
D55	30	SW	SW	SW	SW	30	60	1	+	
D56	30	SW	SW	SW	SW	30	60	1	+	
D57	30	SW	SW	SW	SW	30	60	1	+	
D58	30	SW	SW	SW	SW	30	60	1	+	
D59	30	SW	SW	SW	SW	30	60	1	+	
D60	30	SW	SW	SW	SW	30	60	1	+	

A2 DOOR ELEVATIONS
SCALE: 1/4" = 1'-0"



A3 DOOR JAMB DETAILS
SCALE: 1/16" = 1'-0"

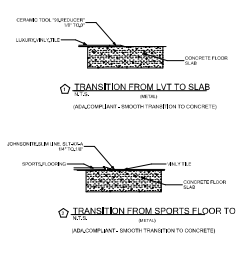
PROJECT SITE
OSCODA AREA SCHOOLS

NEW COMMUNITY CENTER
3550 E River Rd
OSHTON, MI 48750

DESIGNED BY
ARCHITECT
ENGINEER
INTERIOR DESIGNER
LANDSCAPE ARCHITECT
PLUMBER
ELECTRICIAN
MECHANICAL ENGINEER
PAINTER
ROOFER
SPECIALTY CONTRACTOR
GLAZIERS

SHEET TITLE
DOOR SCHEDULE/
WINDOW ELEVATIONS

SHEET NO.
A2.00

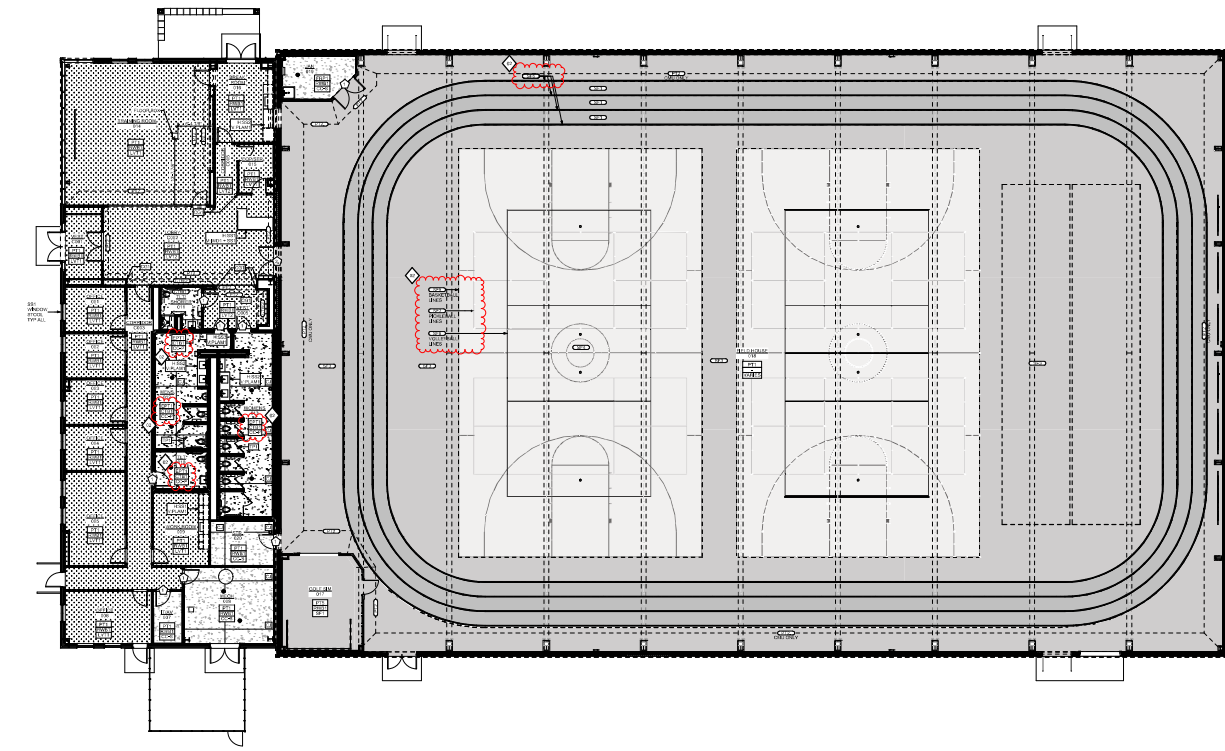
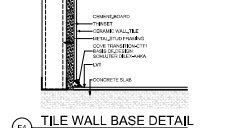
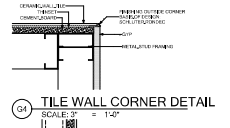


CLOUD MOUNTAIN COLOR CODE
SCALE: 1" = 1'-0"

FINISH	DESCRIPTION	UNIT	QTY
F2	SHOWER CURB	sq ft	100
F3	TILE WALL BASE	sq ft	120
F4	TILE WALL CORNER	sq ft	80
F5	TILE WALL	sq ft	2000
F6	SHOWER FLOOR	sq ft	1000
F7	TILE FLOOR	sq ft	30000

DELTA OSCODA BLUE COLOR CODE
SCALE: 1" = 1'-0"

FINISH	DESCRIPTION	UNIT	QTY
F8	TILE FLOOR	sq ft	30000
F9	TILE WALL	sq ft	2000
F10	TILE WALL BASE	sq ft	120
F11	TILE WALL CORNER	sq ft	80
F12	SHOWER CURB	sq ft	100
F13	SHOWER FLOOR	sq ft	1000



FINISHES GENERAL NOTES

- FINISHES SHALL BE AS SHOWN UNLESS NOTED OTHERWISE.
- FINISHES SHALL BE APPLIED TO THE SURFACE AS SHOWN UNLESS NOTED OTHERWISE.
- FINISHES SHALL BE APPLIED TO THE SURFACE AS SHOWN UNLESS NOTED OTHERWISE.
- FINISHES SHALL BE APPLIED TO THE SURFACE AS SHOWN UNLESS NOTED OTHERWISE.
- FINISHES SHALL BE APPLIED TO THE SURFACE AS SHOWN UNLESS NOTED OTHERWISE.
- FINISHES SHALL BE APPLIED TO THE SURFACE AS SHOWN UNLESS NOTED OTHERWISE.
- FINISHES SHALL BE APPLIED TO THE SURFACE AS SHOWN UNLESS NOTED OTHERWISE.
- FINISHES SHALL BE APPLIED TO THE SURFACE AS SHOWN UNLESS NOTED OTHERWISE.
- FINISHES SHALL BE APPLIED TO THE SURFACE AS SHOWN UNLESS NOTED OTHERWISE.
- FINISHES SHALL BE APPLIED TO THE SURFACE AS SHOWN UNLESS NOTED OTHERWISE.

FINISHES SYMBOL LEGEND

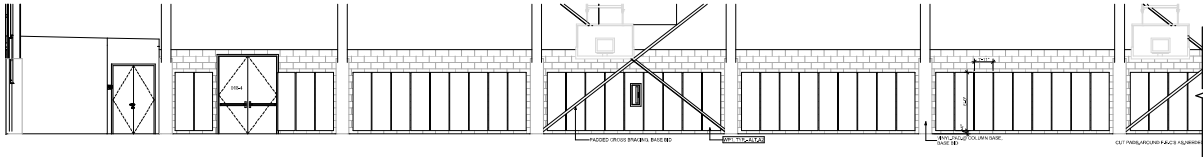
- SHOWER CURB
- TILE WALL BASE
- TILE WALL CORNER
- TILE WALL
- SHOWER FLOOR
- TILE FLOOR

FLOORING MATERIAL LEGEND

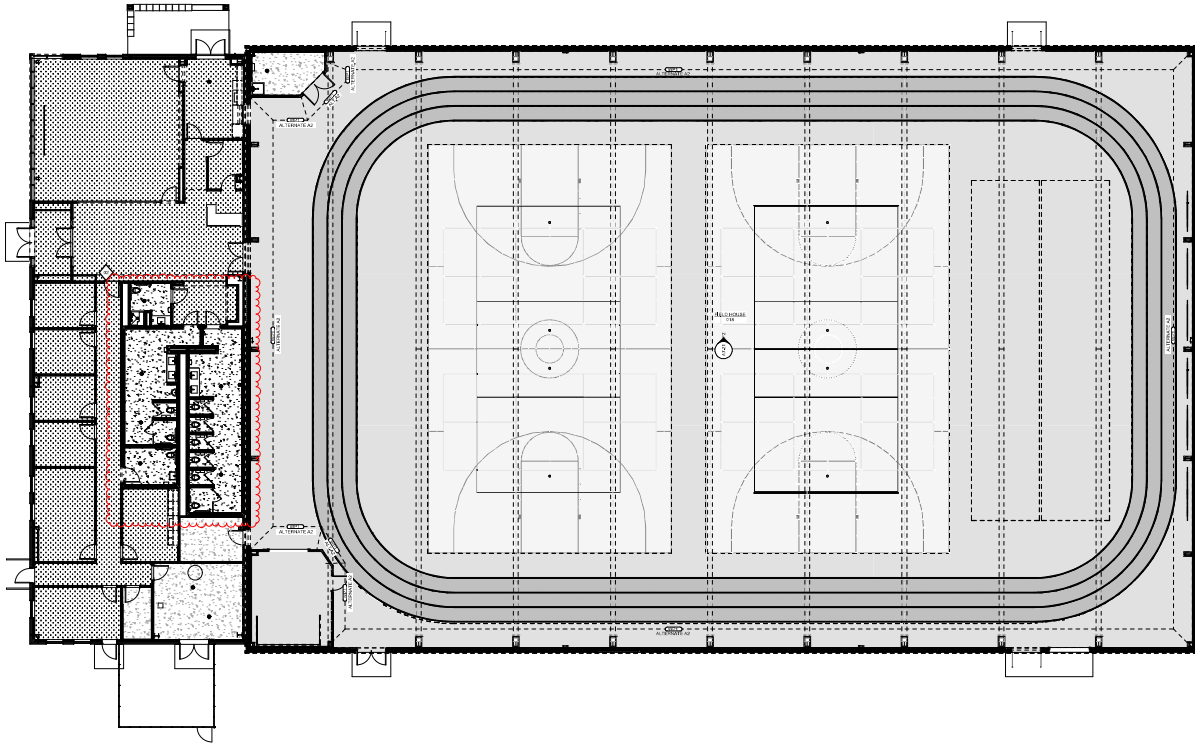
- CARPET
- HARDWOOD
- CONCRETE
- WOOD GROUT
- CONCRETE GROUT
- CONCRETE FINISH

FINISH SCHEDULE

FINISH	DESCRIPTION	UNIT	QTY
F2	SHOWER CURB	sq ft	100
F3	TILE WALL BASE	sq ft	120
F4	TILE WALL CORNER	sq ft	80
F5	TILE WALL	sq ft	2000
F6	SHOWER FLOOR	sq ft	1000
F7	TILE FLOOR	sq ft	30000



F2 FIELDHOUSE 018 - PARTIAL EAST ELEVATION - ALT A2
SCALE: 1/4" = 1'-0"



A1 FIRST FLOOR FINISH PLAN - ALTERNATE A3
SCALE: 1/8" = 1'-0"

FINISHES GENERAL NOTES

1. FINISHES SHALL BE AS SHOWN UNLESS OTHERWISE NOTED.
2. FINISHES SHALL BE APPLIED TO ALL EXPOSED SURFACES UNLESS OTHERWISE NOTED.
3. FINISHES SHALL BE APPLIED TO ALL EXPOSED SURFACES UNLESS OTHERWISE NOTED.
4. FINISHES SHALL BE APPLIED TO ALL EXPOSED SURFACES UNLESS OTHERWISE NOTED.
5. FINISHES SHALL BE APPLIED TO ALL EXPOSED SURFACES UNLESS OTHERWISE NOTED.
6. FINISHES SHALL BE APPLIED TO ALL EXPOSED SURFACES UNLESS OTHERWISE NOTED.
7. FINISHES SHALL BE APPLIED TO ALL EXPOSED SURFACES UNLESS OTHERWISE NOTED.
8. FINISHES SHALL BE APPLIED TO ALL EXPOSED SURFACES UNLESS OTHERWISE NOTED.
9. FINISHES SHALL BE APPLIED TO ALL EXPOSED SURFACES UNLESS OTHERWISE NOTED.
10. FINISHES SHALL BE APPLIED TO ALL EXPOSED SURFACES UNLESS OTHERWISE NOTED.

FINISHES SYMBOL LEGEND

- CONCRETE
- POLYURETHANE
- POLYURETHANE
- POLYURETHANE
- POLYURETHANE
- POLYURETHANE
- POLYURETHANE
- POLYURETHANE
- POLYURETHANE
- POLYURETHANE

FLOORING MATERIAL LEGEND

- CARPET
- POLYURETHANE
- POLYURETHANE
- POLYURETHANE
- POLYURETHANE
- POLYURETHANE
- POLYURETHANE
- POLYURETHANE
- POLYURETHANE
- POLYURETHANE

FINISH SCHEDULE

NO.	FINISH	DESCRIPTION
1	CONCRETE	CONCRETE
2	POLYURETHANE	POLYURETHANE
3	POLYURETHANE	POLYURETHANE
4	POLYURETHANE	POLYURETHANE
5	POLYURETHANE	POLYURETHANE
6	POLYURETHANE	POLYURETHANE
7	POLYURETHANE	POLYURETHANE
8	POLYURETHANE	POLYURETHANE
9	POLYURETHANE	POLYURETHANE
10	POLYURETHANE	POLYURETHANE
11	POLYURETHANE	POLYURETHANE
12	POLYURETHANE	POLYURETHANE
13	POLYURETHANE	POLYURETHANE
14	POLYURETHANE	POLYURETHANE
15	POLYURETHANE	POLYURETHANE
16	POLYURETHANE	POLYURETHANE
17	POLYURETHANE	POLYURETHANE
18	POLYURETHANE	POLYURETHANE
19	POLYURETHANE	POLYURETHANE
20	POLYURETHANE	POLYURETHANE
21	POLYURETHANE	POLYURETHANE
22	POLYURETHANE	POLYURETHANE
23	POLYURETHANE	POLYURETHANE
24	POLYURETHANE	POLYURETHANE
25	POLYURETHANE	POLYURETHANE
26	POLYURETHANE	POLYURETHANE
27	POLYURETHANE	POLYURETHANE
28	POLYURETHANE	POLYURETHANE
29	POLYURETHANE	POLYURETHANE
30	POLYURETHANE	POLYURETHANE
31	POLYURETHANE	POLYURETHANE
32	POLYURETHANE	POLYURETHANE
33	POLYURETHANE	POLYURETHANE
34	POLYURETHANE	POLYURETHANE
35	POLYURETHANE	POLYURETHANE
36	POLYURETHANE	POLYURETHANE
37	POLYURETHANE	POLYURETHANE
38	POLYURETHANE	POLYURETHANE
39	POLYURETHANE	POLYURETHANE
40	POLYURETHANE	POLYURETHANE
41	POLYURETHANE	POLYURETHANE
42	POLYURETHANE	POLYURETHANE
43	POLYURETHANE	POLYURETHANE
44	POLYURETHANE	POLYURETHANE
45	POLYURETHANE	POLYURETHANE
46	POLYURETHANE	POLYURETHANE
47	POLYURETHANE	POLYURETHANE
48	POLYURETHANE	POLYURETHANE
49	POLYURETHANE	POLYURETHANE
50	POLYURETHANE	POLYURETHANE

PROJECT SITE
OSCODA AREA SCHOOLS

NEW COMMUNITY CENTER
3550 E River Rd
Oscoda, MI 49856

NO.	FINISH	DESCRIPTION
1	CONCRETE	CONCRETE
2	POLYURETHANE	POLYURETHANE
3	POLYURETHANE	POLYURETHANE
4	POLYURETHANE	POLYURETHANE
5	POLYURETHANE	POLYURETHANE
6	POLYURETHANE	POLYURETHANE
7	POLYURETHANE	POLYURETHANE
8	POLYURETHANE	POLYURETHANE
9	POLYURETHANE	POLYURETHANE
10	POLYURETHANE	POLYURETHANE
11	POLYURETHANE	POLYURETHANE
12	POLYURETHANE	POLYURETHANE
13	POLYURETHANE	POLYURETHANE
14	POLYURETHANE	POLYURETHANE
15	POLYURETHANE	POLYURETHANE
16	POLYURETHANE	POLYURETHANE
17	POLYURETHANE	POLYURETHANE
18	POLYURETHANE	POLYURETHANE
19	POLYURETHANE	POLYURETHANE
20	POLYURETHANE	POLYURETHANE
21	POLYURETHANE	POLYURETHANE
22	POLYURETHANE	POLYURETHANE
23	POLYURETHANE	POLYURETHANE
24	POLYURETHANE	POLYURETHANE
25	POLYURETHANE	POLYURETHANE
26	POLYURETHANE	POLYURETHANE
27	POLYURETHANE	POLYURETHANE
28	POLYURETHANE	POLYURETHANE
29	POLYURETHANE	POLYURETHANE
30	POLYURETHANE	POLYURETHANE
31	POLYURETHANE	POLYURETHANE
32	POLYURETHANE	POLYURETHANE
33	POLYURETHANE	POLYURETHANE
34	POLYURETHANE	POLYURETHANE
35	POLYURETHANE	POLYURETHANE
36	POLYURETHANE	POLYURETHANE
37	POLYURETHANE	POLYURETHANE
38	POLYURETHANE	POLYURETHANE
39	POLYURETHANE	POLYURETHANE
40	POLYURETHANE	POLYURETHANE
41	POLYURETHANE	POLYURETHANE
42	POLYURETHANE	POLYURETHANE
43	POLYURETHANE	POLYURETHANE
44	POLYURETHANE	POLYURETHANE
45	POLYURETHANE	POLYURETHANE
46	POLYURETHANE	POLYURETHANE
47	POLYURETHANE	POLYURETHANE
48	POLYURETHANE	POLYURETHANE
49	POLYURETHANE	POLYURETHANE
50	POLYURETHANE	POLYURETHANE

SHEET TITLE
FINISH PLAN - ALTERNATE A2 - WALL PADS

SHEET NO.
A7.21

SECTION 096566 - RESILIENT ATHLETIC FLOORING

PART 1 GENERAL

1.1 SECTION INCLUDES

- A. Fluid-applied polyurethane flooring over rubberized base mat.

1.2 RELATED REQUIREMENTS

- A. Section 090561 - Common Work Results For Flooring Preparation: Concrete slab moisture and alkalinity testing and remediation procedures.

1.3 REFERENCE STANDARDS

- A. ASTM D412 - Standard Test Methods for Vulcanized Rubber and Thermoplastic Elastomers--Tension; 2016 (Reapproved 2021).
- B. ASTM D2240 - Standard Test Method for Rubber Property--Durometer Hardness; 2015 (Reapproved 2021).

1.4 ADMINISTRATIVE REQUIREMENTS

- A. Preinstallation Meeting: Convene a preinstallation meeting one week before starting work of this section; require attendance by all affected installers; review preparation and installation procedures and coordination and scheduling necessary for related work.

1.5 SUBMITTALS

- A. See Section 013000 - Administrative Requirements, for submittal procedures.
- B. Product Data: Manufacturer's printed data sheets for products specified.
- C. Shop Drawings: Fabrication and installation details, and layout, colors, and widths of game lines and equipment locations.
- D. Selection Samples: Manufacturer's color charts for flooring materials specified and game line paints, indicating full range of colors and textures available.
- E. Verification Samples: Actual flooring material specified, not less than 12 inch square, mounted on solid backing.
- F. Concrete Subfloor Test Report: Submit a copy of the moisture and alkalinity (pH) test reports.

1.6 QUALITY ASSURANCE

- A. Manufacturer Qualifications: Company specializing in manufacturing products specified in this section, with at least three years of documented experience.

- B. Installer Qualifications: Company specializing in performing work of the type specified and with at least three years of documented experience.
- C. Basis of Design: Specifications for flooring products are based on systems by the specified basis of design manufacturer. Flooring types manufactured by other acceptable manufacturers are permitted, subject to compliance with all performance requirements; and provided that deviations in composition and coloration are minor, and do not detract substantially from the indicated design intent.

1.7 DELIVERY, STORAGE, AND HANDLING

- A. Deliver materials to project site in unopened containers clearly labeled with manufacturer's name and identification of contents.
- B. Store materials in dry and clean location until needed for installation. During installation, handle in a manner that will prevent marring and soiling of finished surfaces.

1.8 FIELD CONDITIONS

- A. Install resilient flooring and accessories after other finishing operations, including painting have been completed.
- B. Do not install resilient flooring over concrete slabs until slabs have been fully cured for at least 30 days, and are sufficiently dry to achieve proper bond as determined by flooring manufacturer's recommended bond and moisture test.
- C. Maintain temperature in spaces to receive adhesively installed resilient flooring within range of 70 to 95 degrees F for not less than 48 hours before the beginning of installation and for not less than 48 hours after installation has been completed. Subsequently, do not allow temperature in installed spaces to drop below 50 degrees F or to go above 100 degrees F.

1.9 WARRANTY

- A. Resilient Flooring: Provide manufacturer's warranty, as follows:
 - 1. Materials: Minimum 2 years from date of purchase.
 - 2. Installation: Minimum 2 years from date of installation; warrant entire installation against loss of adhesion to substrates.

PART 2 PRODUCTS

2.1 FLUID-APPLIED ATHLETIC FLOORING

- A. Polyurethane Flooring Over Rubberized Base Mat:

1. Base Mat: Prefabricated rubber mat of recycled rubber granules in polyurethane binder.
 - a. Thickness: 7 mm.
 2. Sealer: Manufacturer's standard two-component polyurethane compound designed to seal base mat before application of resin topcoat.
 3. Resin: Two-component, solid, pigmented, self-leveling polyurethane without fillers, zero mercury formulation, with properties as follows:
 - a. Tensile strength: Minimum 1000 psi, per ASTM D412.
 - b. Durometer Hardness, Type A: Minimum of 70, when tested in accordance with ASTM D2240.
 - c. Ultimate Elongation: Minimum 100 percent, per ASTM D412.
 4. Finish: Manufacturer's standard pigmented two-component polyurethane topcoat, matte finish, in color as selected from manufacturer's standard range.
- B. Game Lines: Manufacturer's standard pigmented polyurethane paint.
1. Colors: As selected by Architect.
- C. Basis of Design:
1. Connor Sports; ElastiPlus: www.connorsports.com.
- D. Other Acceptable Manufacturers:
1. Kiefer USA; Duraflex Elite: www.kieferusa.com.
 2. Robbins Sports Surfaces: www.robbinsfloor.com

2.2 ACCESSORIES

- A. Leveling Compound: Latex-modified cement formulation as recommended by flooring manufacturer for substrate conditions.
1. Compressive Strength: 3000 psi, minimum, after 28 days, when tested in accordance with ASTM C109/C109M or ASTM C472, whichever is appropriate.
- B. Flooring Adhesive: Waterproof; types recommended by flooring manufacturer.

PART 3 EXECUTION

3.1 EXAMINATION

- A. Examine substrates for conditions detrimental to installation of athletic flooring. Proceed with installation only after unsatisfactory conditions have been corrected.

- B. Verify that surfaces are flat to tolerances acceptable to flooring manufacturer, free of cracks that might telegraph through flooring, clean, dry, and free of curing compounds, surface hardeners, and other chemicals that might interfere with bonding of athletic flooring to substrate.
- C. Cementitious Subfloor Surfaces: Verify that substrates are ready for resilient flooring installation by testing for moisture and alkalinity (pH).
 - 1. Test in accordance with Section 090561.
 - 2. Conduct tests by an independent testing agency acceptable to Owner.
 - a. See Section 090561.
 - 3. Obtain instructions if test results are not within limits recommended by resilient flooring manufacturer and adhesive materials manufacturer.
 - 4. Follow moisture and alkalinity remediation procedures in Section 090561.

3.2 PREPARATION

- A. Prepare floor substrates for installation of flooring in accordance with Section 090561.
- B. Prepare floor substrates as recommended by flooring and adhesive manufacturers.
- C. Concrete: Use leveling compound as necessary to achieve substrate flatness of plus or minus 1/8 inch within 10 ft radius.
- D. Remove coatings that are incompatible with flooring adhesives, using methods recommended by flooring manufacturer.
- E. Broom clean areas to receive athletic flooring immediately before beginning installation.

3.3 INSTALLATION

- A. Starting installation constitutes acceptance of subfloor conditions.
- B. Install in accordance with manufacturer's written instructions.
- C. Fluid-Applied Polyurethane Flooring Over Base Mat:
 - 1. Mix components in strict accordance with manufacturer's written instructions, and apply at manufacturer's recommended rates. Allow sufficient curing time between coatings.
 - 2. Unroll base mat and allow to relax before beginning installation.

3. Apply adhesive to substrate with notched trowel, and roll base mat into fresh adhesive. Do not allow compression fit at any seams. Roll mat with weighted linoleum roller immediately upon application of base mat and again after 45 minutes to insure that base mat is firmly adhered to substrate.
4. Thoroughly mix and apply seal coat to surface of base mat with steel trowel.
5. Apply resin wear layer in number of lifts recommended by manufacturer, applying wet-into-wet to achieve a seamless surface. Sand any imperfections in surface after wear layer has cured.
6. Thoroughly mix and apply finish coat with airless sprayer to achieve uniform appearance.
7. Lay out game lines using tape and taping machine approved by flooring manufacturer. Apply game line paint with roller, and allow to dry before removing tape.

3.4 CLEANING

- A. Clean flooring using methods recommended by manufacturer.

3.5 PROTECTION

- A. Protect finished athletic flooring from construction traffic to ensure that it is without damage upon Date of Substantial Completion.

END OF SECTION 096566