

Revisions:

06/22/98

08/20/98

Date: 12 MAY 1998

Scale: 1/8" = 1'-0"

Dwg By: D. H. BASS

Project No. 97012900

Sheet No.

A-3

MIDLAND COUNTY EDUCATIONAL SERVICE AGENCY

ELEVATOR ADDITION & RENOVATIONS

TO SUGNET SCHOOL BUILDING

3917 JEFFERSON MIDLAND MI

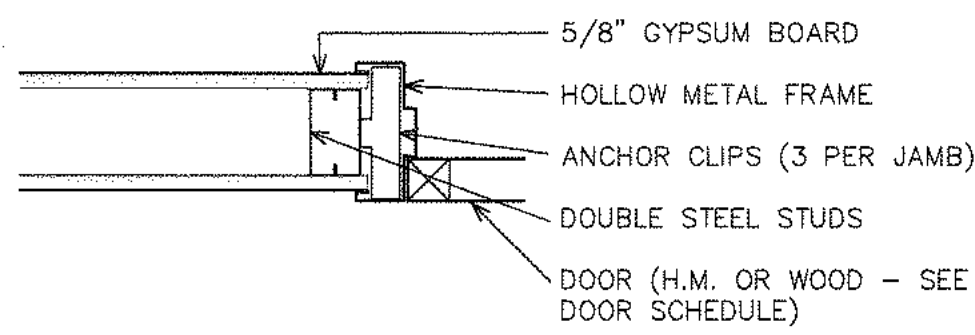
Malzahn Bass & Associates

Derwin H. Bass, AIA - Architect

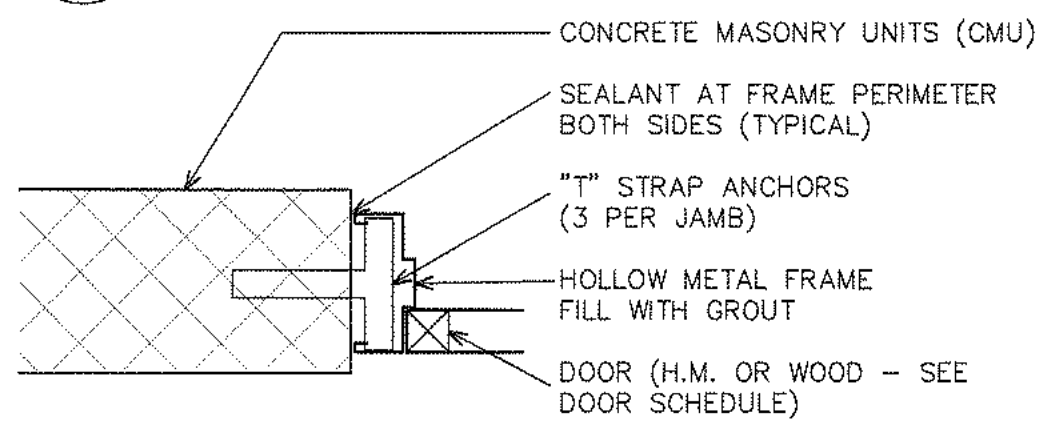
MI License No. 1301022997

PO Box 202 Midland MI 48640-0202

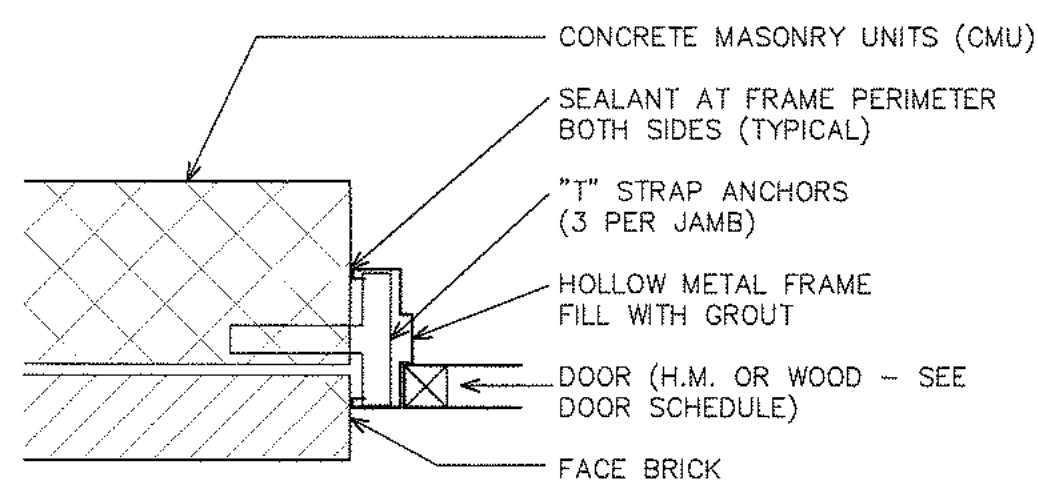
Phn: (517) 631-1253 Fax: (517) 631-1170



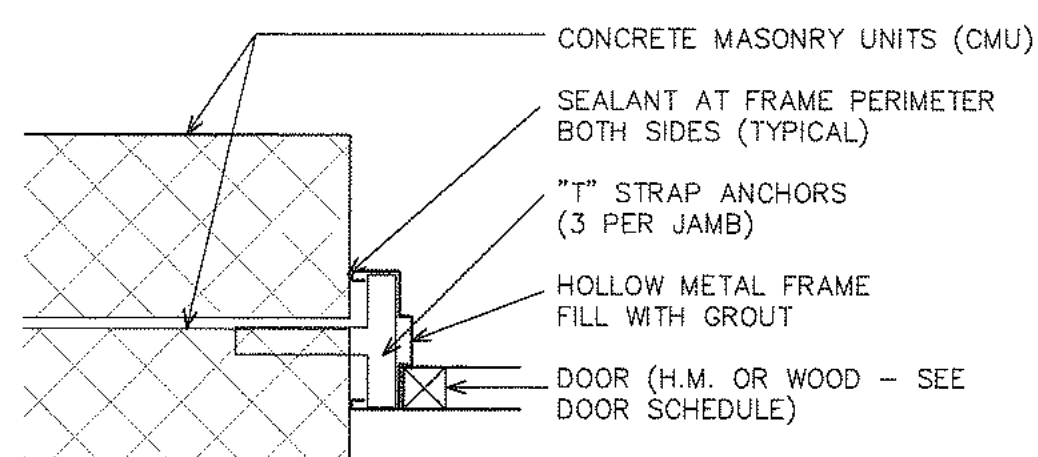
J-1 DOOR JAMB DETAIL
SCALE 1-1/2" = 1'-0"



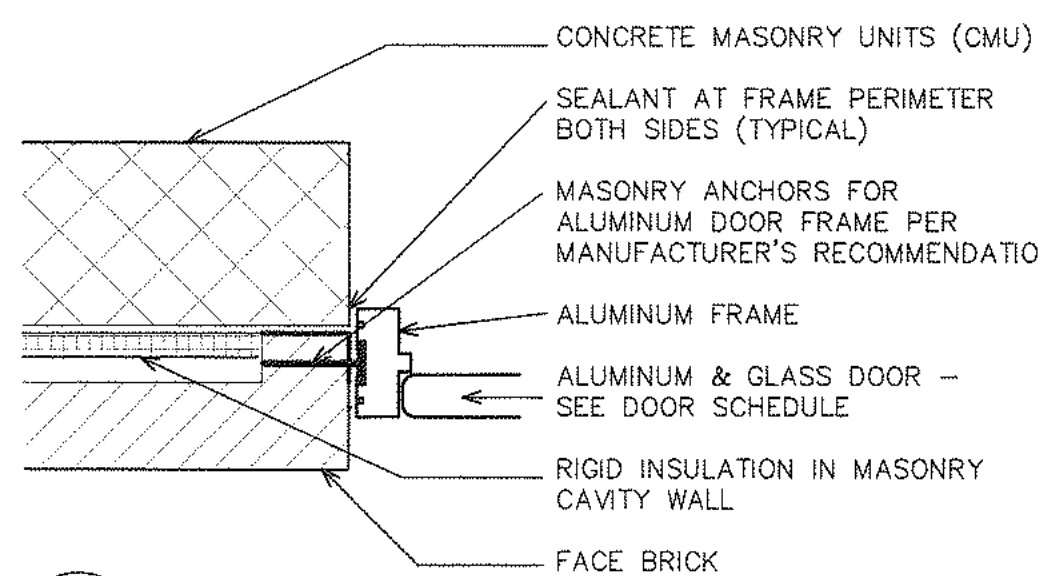
J-2 DOOR JAMB DETAIL
SCALE 1-1/2" = 1'-0"



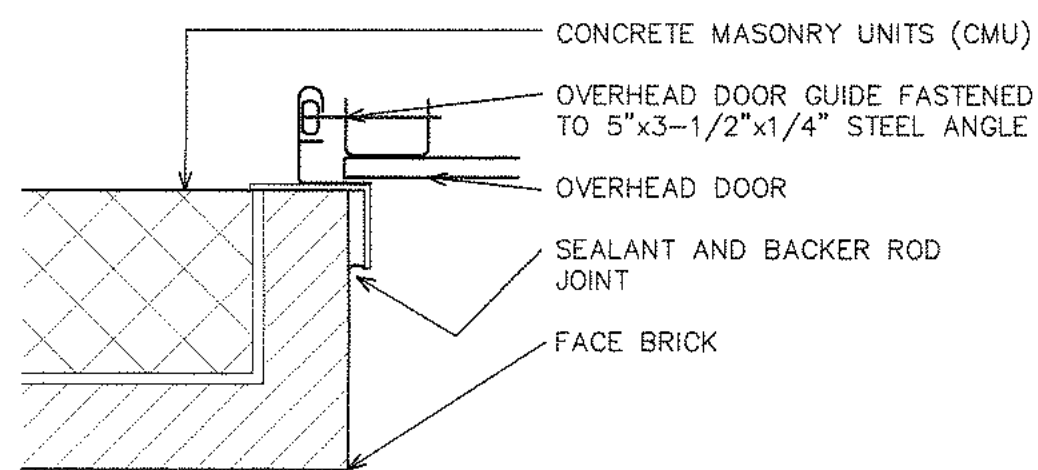
J-3 DOOR JAMB DETAIL
SCALE 1-1/2" = 1'-0"



J-4 DOOR JAMB DETAIL
SCALE 1-1/2" = 1'-0"

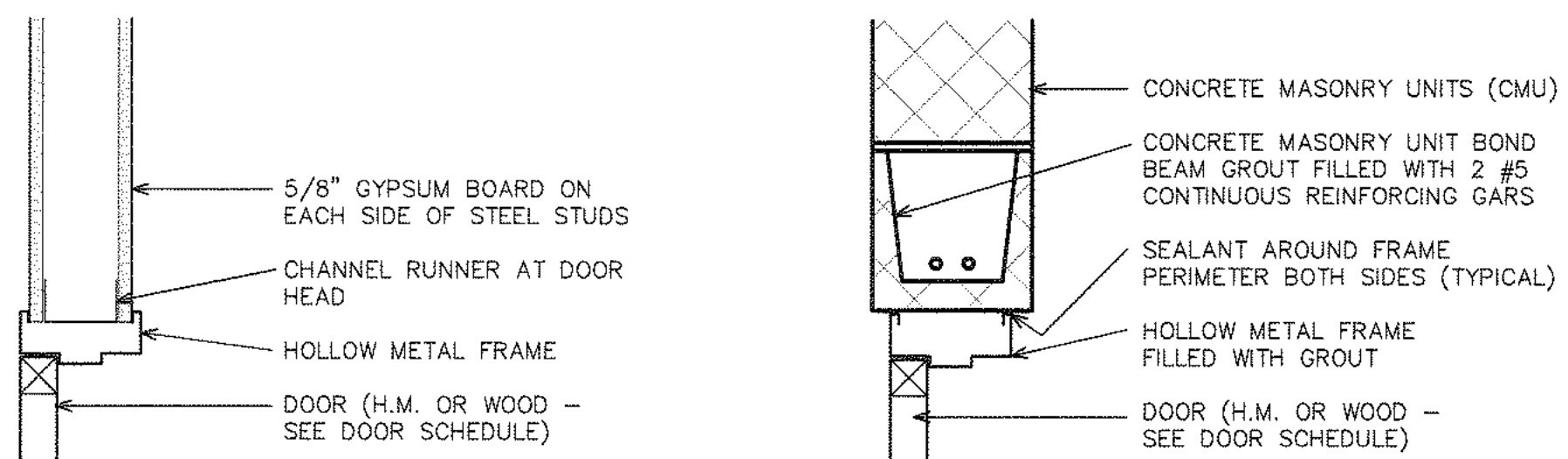
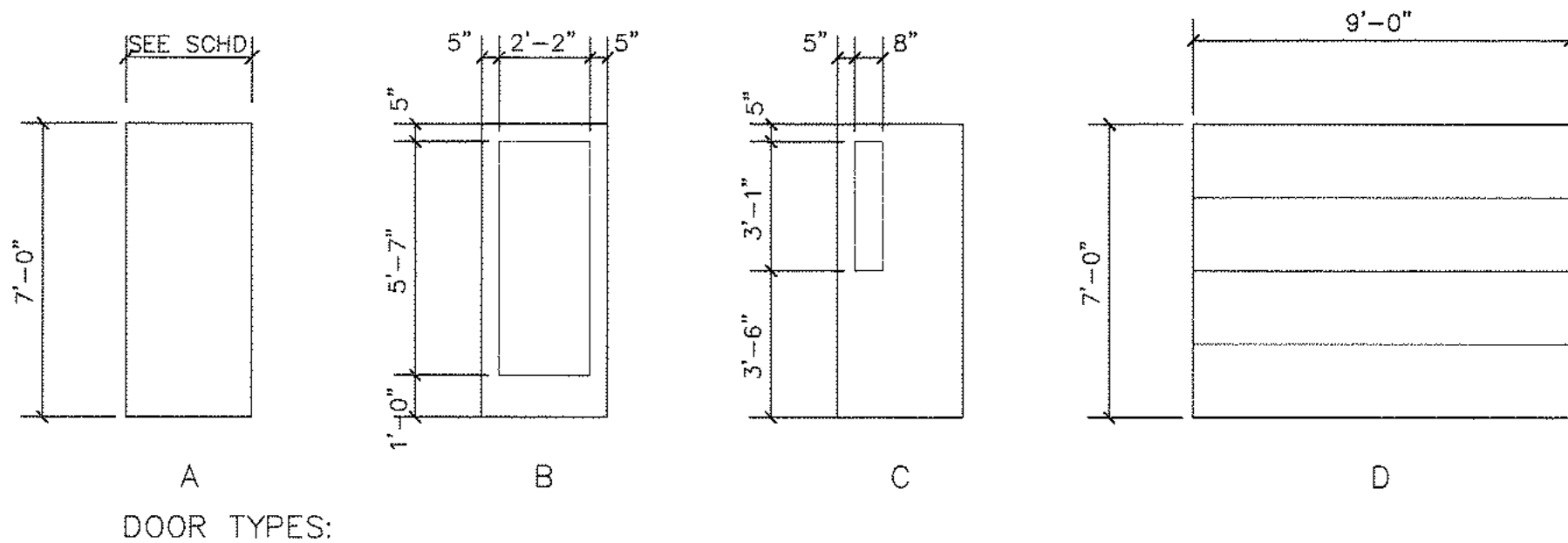


J-5 DOOR JAMB DETAIL
SCALE 1-1/2" = 1'-0"

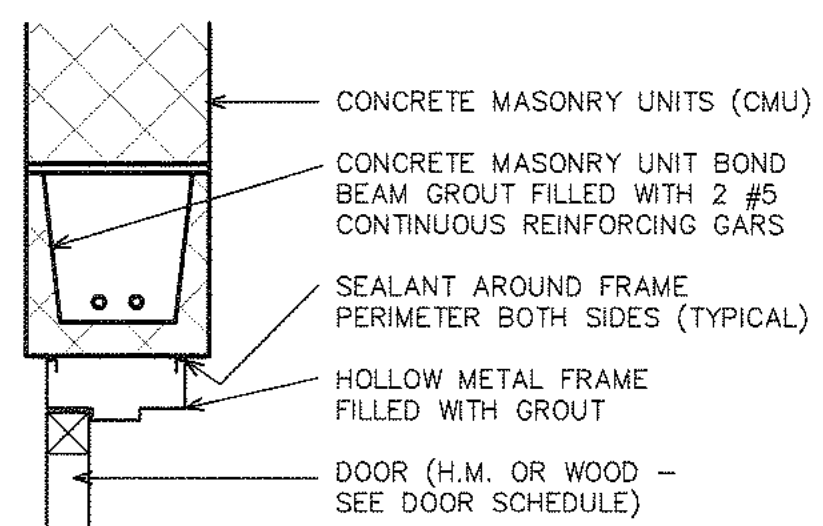


J-6 DOOR JAMB DETAIL
SCALE 1-1/2" = 1'-0"

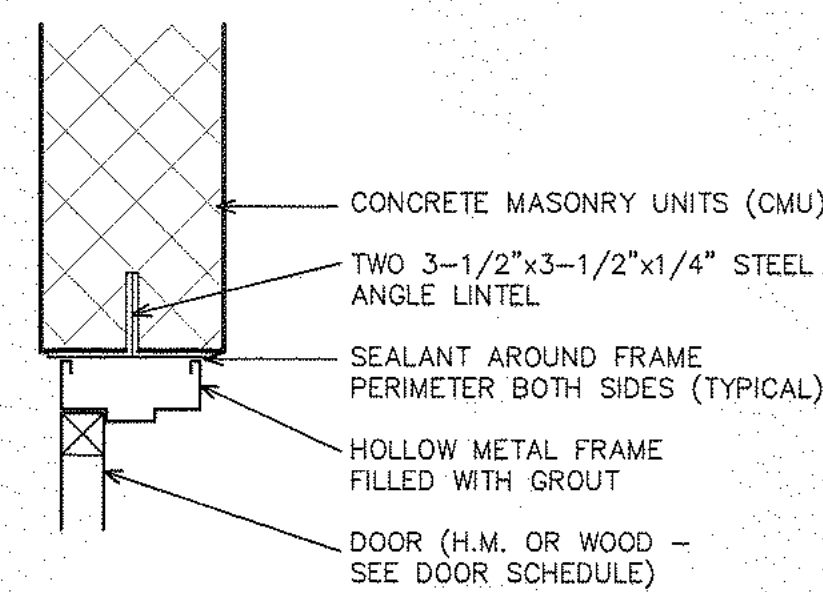
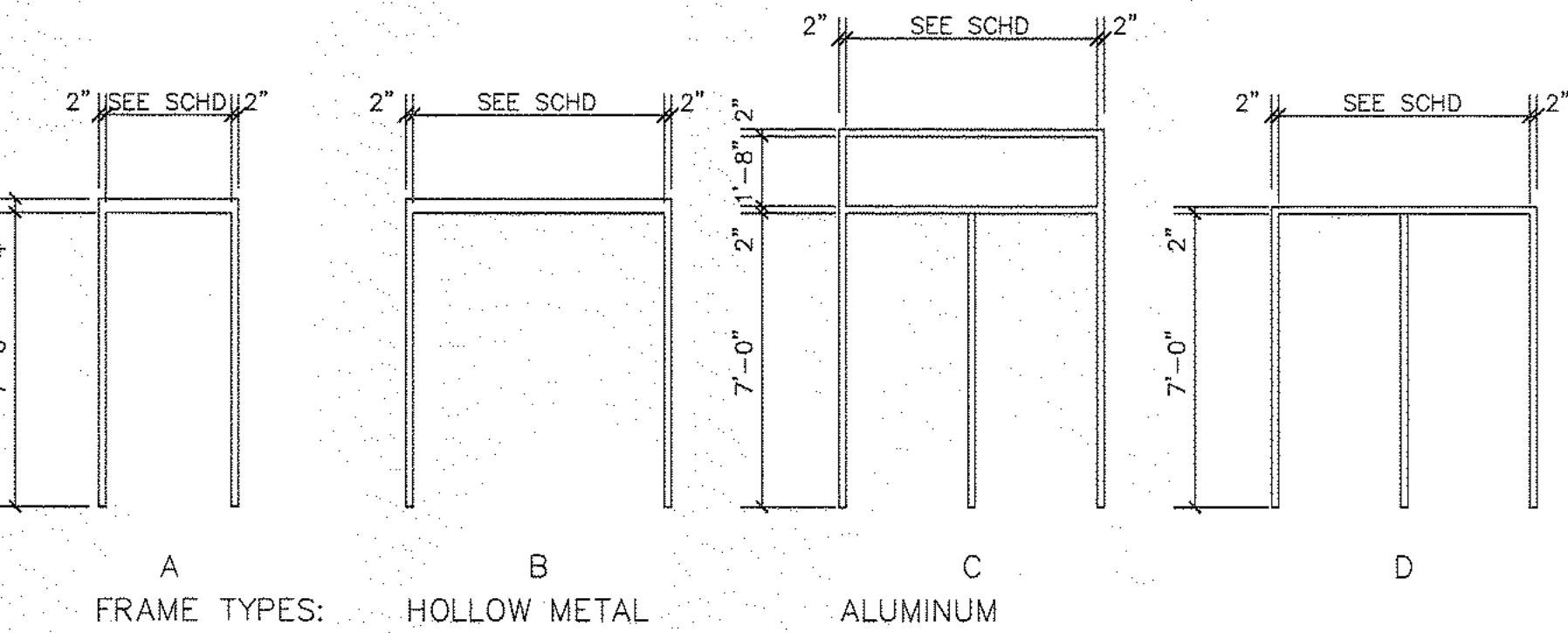
Room Finish Schedule												
Note: (room name) indicates former use of room.												
Bid Type	Room No	Room Name	Floor	Base	Wall North	Wall East	Wall South	Wall West	Wall Diagonal	Ceiling Material	Ceiling Finish	Ceiling Height
Base Bld	000	Existing Stairs	Res. Tile	4" Vinyl	Paint	Paint	Paint	Paint	N/A	No Chg.	Paint	Varies
	001	New Corridor	Res. Tile	4" Vinyl	Paint	Paint	Paint	Paint	Paint	Exposed Deck	Paint	8'-6"
	002	New Elevator Equipment Room	Sealed Concrete	None	Paint	Paint	Paint	Paint	Paint	Exposed Deck	Paint	16'-4"
	100	New Foyer	Tufted	4" Vinyl	Paint	Paint	Paint	Paint	Paint	Suspend	Ac. Tile	9'-0"
	101	Existing Stairs	Res. Tile	4" Vinyl	Paint	Paint	Paint	Paint	N/A	Suspend	Ac. Tile	Varies
	102	New Therapy (Boy's Locker)	Carpet	4" Vinyl	Paint	Paint	Paint	Paint	Paint	Suspend	Ac. Tile	8'-0"
	103	New Bath & Changing Room (Toilet & Shower)	Ceramic Tile	Ceramic Tile	Ceramic Tile	Ceramic Tile	Ceramic Tile	Ceramic Tile	N/A	Gyp. Bd.	Paint	8'-0"
	104	Existing Gym	No Chg.	No Chg.	Paint	No Chg.	No Chg.	No Chg.	N/A	No Chg.	No Chg.	Existing
	200	Existing Stairs	Res. Tile	4" Vinyl	Paint	Paint	Paint	Paint	N/A	Suspend	Ac. Tile	Varies
	201	New Corridor	Res. Tile	4" Vinyl	Paint	Paint	Paint	Paint	Paint	Suspend	Ac. Tile	16'-0"
Add Alt. A-1	300	Existing Stairs	Res. Tile	4" Vinyl	Paint	Paint	Paint	Paint	N/A	Suspend	Ac. Tile	9'-0"
	301	New Corridor	Res. Tile	4" Vinyl	Paint	Paint	Paint	Paint	N/A	Suspend	Ac. Tile	9'-0"
	302	New Closet	Res. Tile	4" Vinyl	Paint	Paint	Paint	Paint	N/A	Suspend	Ac. Tile	9'-0"
	303	New Office	Carpet	4" Vinyl	Paint	Paint	Paint	Paint	N/A	Suspend	Ac. Tile	9'-0"
	304	New Office	Carpet	4" Vinyl	Paint	Paint	Paint	Paint	N/A	Suspend	Ac. Tile	9'-0"
	305	Existing Corridor	No Chg.	No Chg.	Paint	No Chg.	No Chg.	No Chg.	N/A	No Chg.	No Chg.	Existing
	104	Existing Upper Gym	No Chg.	No Chg.	Paint	No Chg.	No Chg.	No Chg.	N/A	No Chg.	No Chg.	Existing
	108	New Access Stairs to Boiler Room	Sealed Concrete	None	Paint	Paint	Paint	Paint	N/A	Exposed Deck	Paint	Exposed
	105	Existing Physical Therapy (Library)	No Chg.	4" Vinyl (N. Wall)	Paint	No Chg.	No Chg.	No Chg.	N/A	No Chg.	No Chg.	10'-11"
	106	New Receptionist (Library Stage)	Carpet	4" Vinyl	Paint	Paint	Paint	Paint	N/A	Suspend	Ac. Tile	9'-0"
Add Alt. A-2	107	New Walling	Carpet	4" Vinyl	Paint	Paint	Paint	Paint	N/A	Suspend	Ac. Tile	9'-0"
	109	New Passage	Concrete	None	Paint	Paint	Paint	Paint	N/A	Exposed	Paint	Exposed
Add Alt. A-3	110	New Outdoor Storage	Concrete	None	Paint	Paint	Paint	Paint	N/A	Exposed	Paint	Exposed



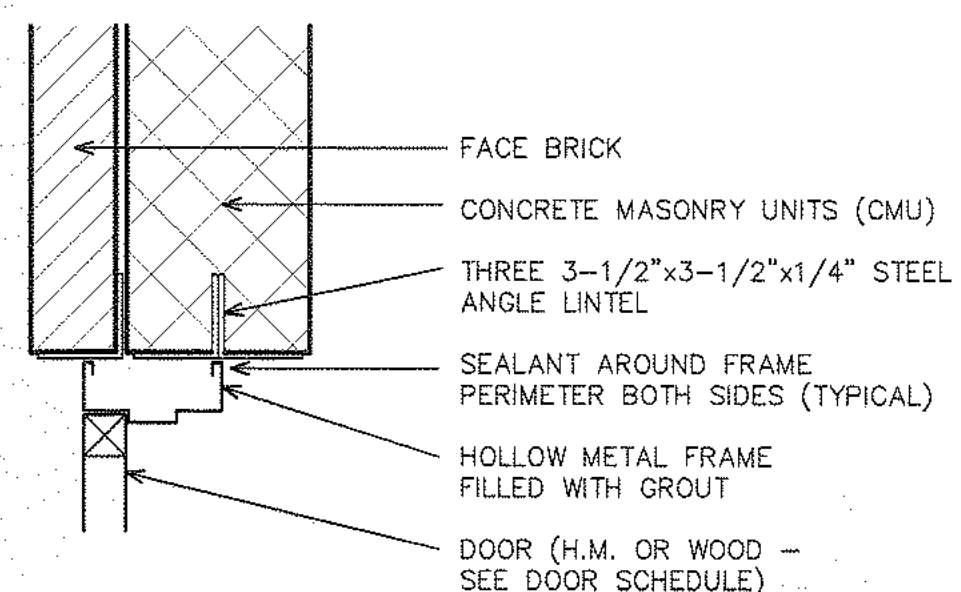
H-1 DOOR HEAD DETAIL
SCALE 1-1/2" = 1'-0"



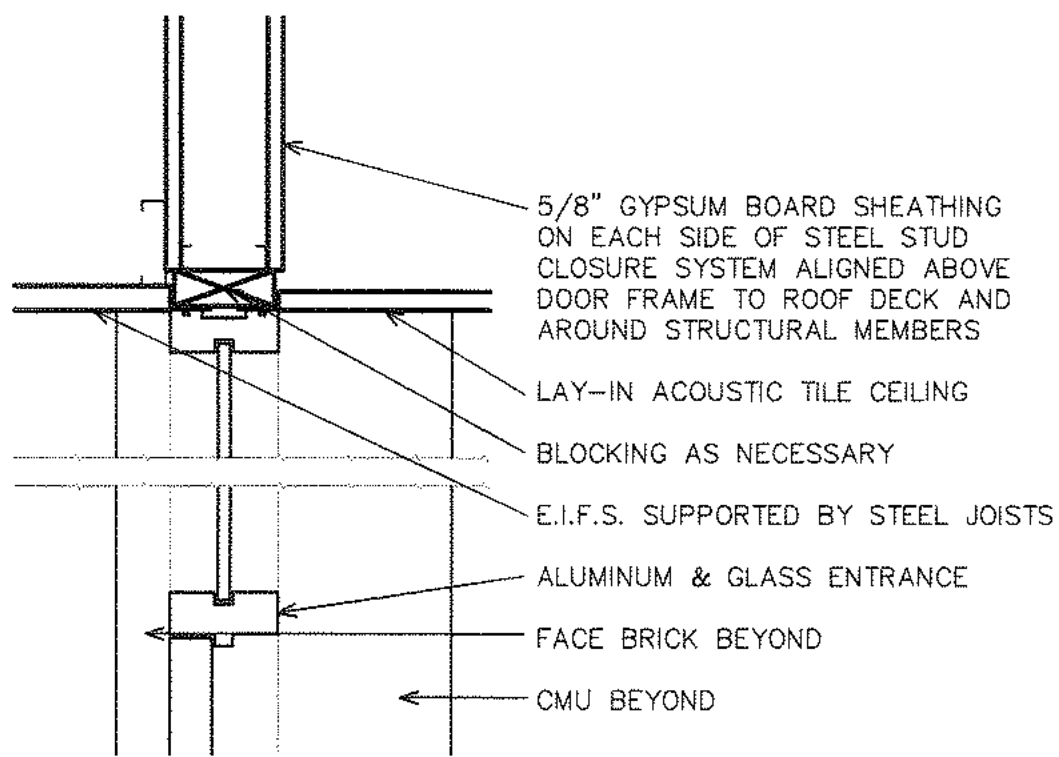
H-2 DOOR HEAD DETAIL
SCALE 1-1/2" = 1'-0"



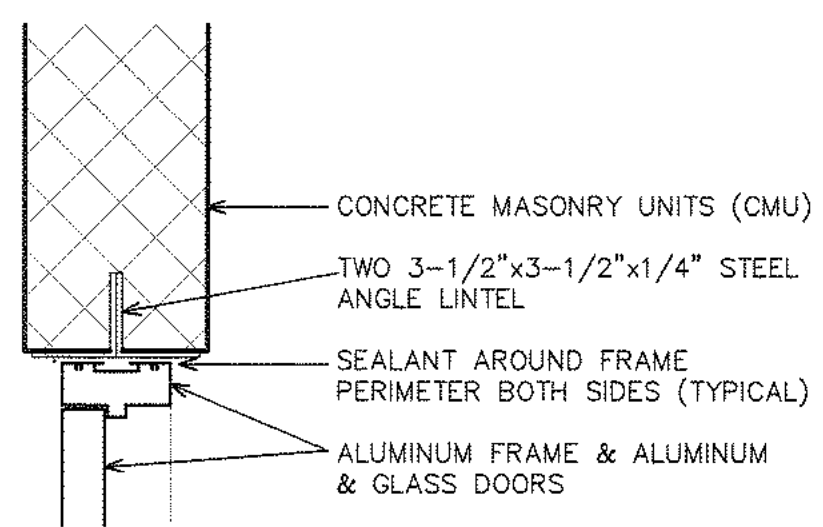
H-3 DOOR HEAD DETAIL
SCALE 1-1/2" = 1'-0"



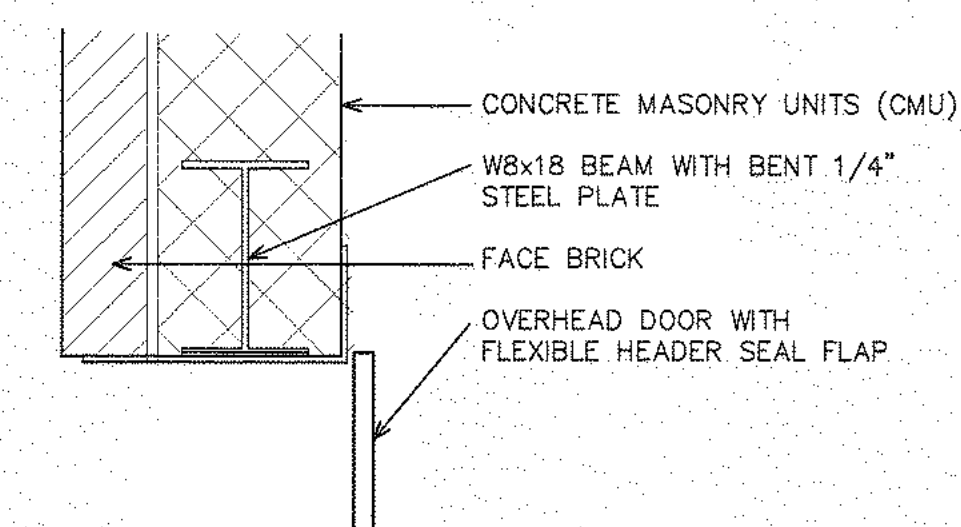
H-4 DOOR HEAD DETAIL
SCALE 1-1/2" = 1'-0"



H-5 DOOR HEAD DETAIL
SCALE 1-1/2" = 1'-0"



H-6 DOOR HEAD DETAIL
SCALE 1-1/2" = 1'-0"



H-7 DOOR HEAD DETAIL
SCALE 1-1/2" = 1'-0"

Door Schedule																
Bid Type	Door No	Door Size	Door Material	Door Type	Door Finish	Frame Material	Frame Type	Frame Finish	Howe Set	Head Detail	Jamb Detail	Floor Change	Label	Remarks		
Base Bld	000	Existing (No Chg.)	H.M.	Exist	Paint	H.M.	Exist	Paint	Exist	N/A	N/A	None	Exist			
	002	3'-0 x 7'-0 x 1 3/4"	Wood	A	Varnish	H.M.	A	Paint	4	H-4	J-4	RT-Conc	B			
	100	Pair: 3'-0 x 7'-0 x 1 3/4"	Alum & Glass	B	Clear Anodized	Alum	C	Clear Anodized	1	H-5	J-5	Conc-Tufted		Push Button Operated Automatic Door Opener on RHR Panel		
	101	Pair: 3'-0 x 7'-0 x 1 3/4"	Alum & Glass	B	Clear Anodized	Alum	C	Clear Anodized	3	H-6	J-5 (Similar)	Tufted-RT		Push Button Operated Automatic Door Opener on RHR Panel		
	102	Existing (No Chg.)	Wood	Exist	Varnish	H.M.	Exist	Paint	Exist	N/A	N/A	RT-Cpt	Exist			
	103	3'-0 x 7'-0 x 1 3/4"	H.M.	A	Paint	H.M.	A	Paint	7	H-3	J-2	Cpt-CT				
	104.1	Existing (No Chg.)	Wood	Exist	Varnish	H.M.	Exist	Paint	Exist	N/A	N/A	Cpt-Wd	Exist			
	104.2	Existing (No Chg.)	Wood	Exist	Varnish	H.M.	Exist	Paint	Exist	N/A	N/A	RT-Exist	Exist			
	105	Existing (No Chg.)	Alum & Glass	Exist	Clear Anodized	Alum	Exist	Clear Anodized	Exist	N/A	N/A	RT-Cpt	Exist			
	300	Existing (No Chg.)	H.M.	Exist	Paint	H.M.	Exist	Paint	Exist	N/A	N/A	RT-Exist	Exist			
Add Alt. A-1	301	3'-6 x 7'-0 x 1 3/4"	Wood	C	Varnish	H.M.	A	Paint	5	H-4	J-3	RT-Exist				
	302	Pair: 3'-0 x 7'-0 x 1 3/4"	Wood	A	Varnish	H.M.	A	Paint	6	H-3	J-2	RT-RT				
	303	3'-0 x 7'-0 x 1 3/4"	Wood	C	Varnish	H.M.	A	Paint	8	H-2	J-2	RT-Cpt				
	304	3'-0 x 7'-0 x 1 3/4"	Wood	C	Varnish	H.M.	A	Paint	8	H-2	J-2	RT-Cpt				
	108	3'-0 x 7'-0 x 1 3/4"	H.M.	A	Paint	H.M.	A	Paint	2	H-4	J-3	Conc-Steel Stairs				
	106	3'-0 x 7'-0 x 1 3/4"	Wood	C	Varnish	H.M.	A	Paint	8	H-1	J-1	Cpt-Cpt				
	107	3'-0 x 7'-0 x 1 3/4"	Wood	C	Varnish	H.M.	A	Paint	8	H-1	J-1	Cpt-Cpt				
	104.3	Existing (No Chg.)	H.M.	Exist	Paint	H.M.	Exist	Paint	Exist	N/A	N/A	Wd-Conc	Exist			
	109	3'-0 x 7'-0 x 1 3/4"	H.M.	A	Paint	H.M.	A	Paint	2	H-4	J-3	Conc-Conc				
	110.1	3'-0 x 7'-0 x 1 3/4"	H.M.	A	Paint	H.M.	A	Paint	4	H-3	J-2	Conc-Conc				
Add Alt. A-3	110.2	3'-0 x 7'-0 x 1 3/4"	H.M.	A	Paint	H.M.	A	Paint	2	H-4	J-3	Conc-Conc				
	110.3	Overhead Door: 9'-0 x 7'-0	Steel	D	Paint	Steel	N/A	Paint	Spec	H-7	J-6	Conc-Conc				

Hardware Sets				
Set 1				
Qty	Type	Description	Finish	Remarks
5	Hinges	4 1/2" x 4 1/2" Full Mortise Butts	US26D	
1	Elect Hinge	4 1/2" x 4 1/2" Full Mortise Butt	US26D	For Electric Retractable Latch
1	Lockset / Panic Bar	Entry Lockset, Square Bolt Exit Devise - LHR	US26D	
1	Lockset / Panic Bar	Entry Lockset, Electric, Square Bolt Exit Devise - RHR	US26D	Electric Retractable Latch
1	Closer	Regular Arm, ADA Delayed Closing - LHR	US26D	
1	Electric Opener	Automatic Door Opener, Non-sequential with second set of Doors - RHR	US26D	Push Button Activated
1	Mullion	Removable Center Mullion	Alum.	
2	Kickplates	0.050 x 10" x 34"	US26D	
1	Threshold	72" with Removable Mullion Fittings	Alum	
2	Sweeps	36" Weather Sweeps	Alum	
2	Seal Sets	36" x 84" Weather Seals	Alum	
2	Push Buttons	6" Round Button with ADA Barrier Free Logo	Alum	See Plans for Button Locations

Set 2				
Qty	Type	Description	Finish	Remarks
3	Hinges	4 1/2" x 4 1/2" Full Mortise Butts	US26D	
1	Lockset	Classroom, Grade 2 Cylindrical, Lever	US26D	
1	Sweep	36" Weather Sweeps	US26D	
1	Seal Set	36" x 84" Weather Seals	US26D	
1	Threshold	36"	Alum	
1	Rigid Arm	Hold-Open Arm/Handed	US26D	

Set 3				
Qty	Type	Description	Finish	Remarks
5	Hinges	4 1/2" x 4 1/2" Full Mortise Butts	US26D	
1	Elect Hinge	4 1/2" x 4 1/2" Full Mortise Butt	US26D	For Electric Retractable Latch
2	Pull Bars	1" dia x 18" x 3-3/4" projection, no offset	US26D	
2	Push Bars	1" dia x door width x 3-3/4" projection	US26D	
1	Closer	Regular Arm, ADA Delayed Closing - LHR	US26D	
1	Electric Opener	Automatic Door Opener, Non-sequential with second set of Doors - RHR	US26D	Push Button Activated
1	Mullion	Removable Center Mullion	Alum.	
2	Kickplates	0.050 x 10" x 34"	US26D	
2	Push Buttons	6" Round Button with ADA Barrier Free Logo	Alum	See Plans for Button Locations

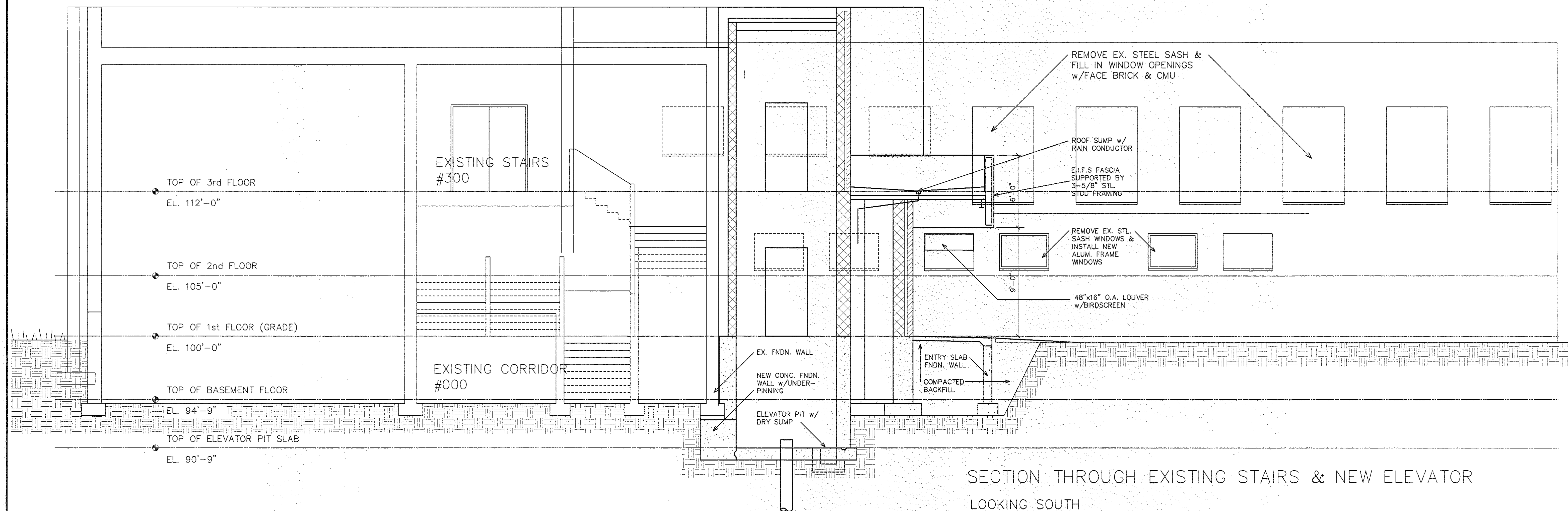
Set 4				
Qty	Type	Description	Finish	Remarks
3	Hinges	4 1/2" x 4 1/2" Full Mortise Butts	US26D	
1	Lockset	Classroom, Grade 2 Cylindrical, Lever	US26D	
1	Rigid Arm	Hold-Open Arm/Handed	US26D	

Set 5				
Qty	Type	Description	Finish	Remarks
4	Hinges	4 1/2" x 4 1/2" Full Mortise Butts	US26D	
1	Pull Bar	1" dia x 18" x 3-3/4" projection, no offset	US26D	
1	Push Bar	1" dia x door width x 3-3/4" projection	US26D	
1	Closer	Regular Arm, ADA Delayed Closing	US26D	
1	Kickplate	0.050 x 10" x 34"	US26D	

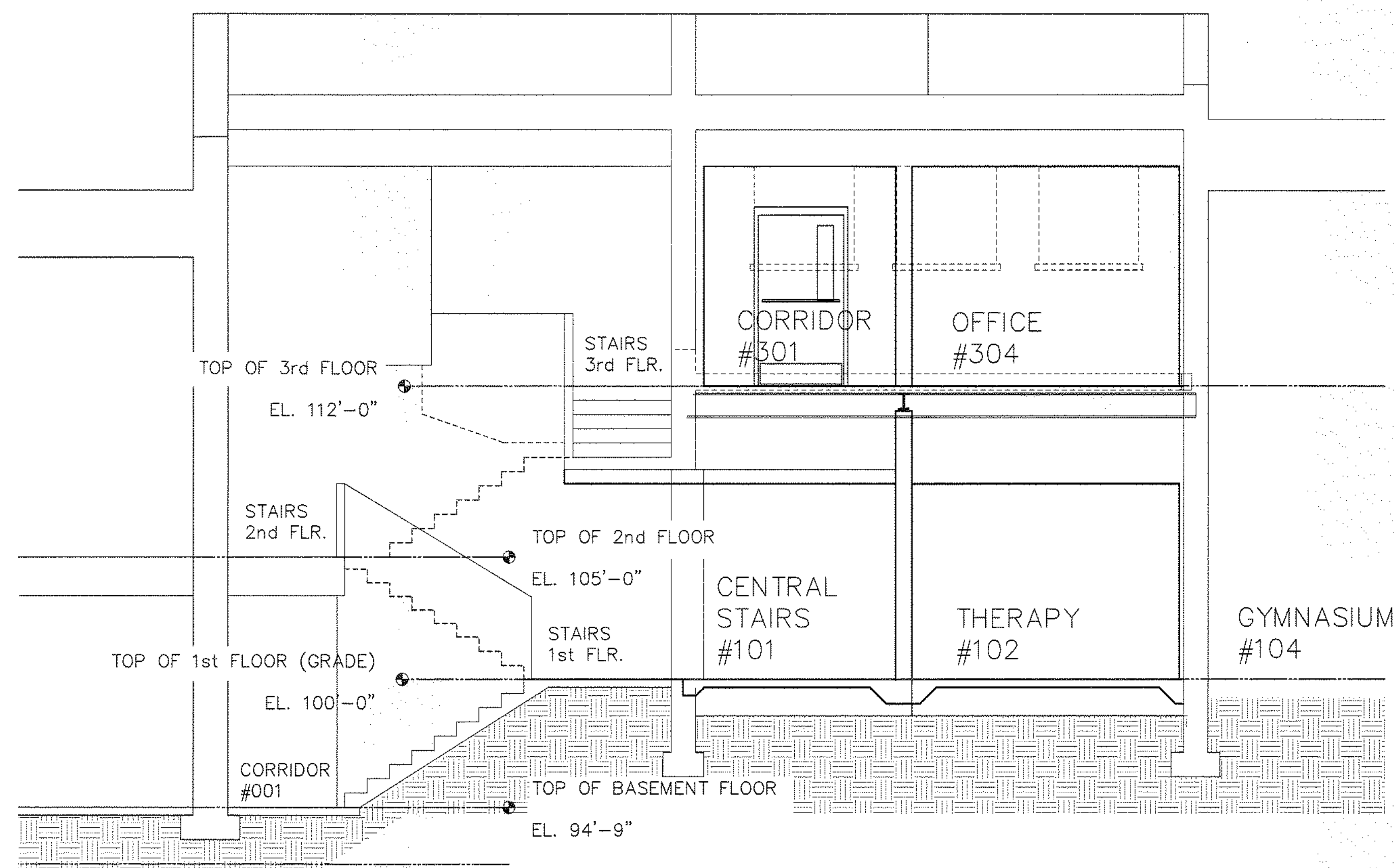
Set 6				
Qty	Type	Description	Finish	Remarks
6	Hinges	4 1/2" x 4 1/2" Full Mortise Butts	US26D	
1	Lockset	Classroom, Grade 2 Cylindrical, Lever - RHR	US26D	RHR Active Panel
1	Throw Bolt	Head Mounted Throw Bolt - LHR	US26D	LHR Fixed Panel with Strike
1	Stop	2 3/4" Wall Bumper, Concave	US32D	Mount at Latch Ht.

Set 7				
Qty	Type	Description	Finish	Remarks
3	Hinges	4 1/2" x 4 1/2" Full Mortise Butts	US26D	
1	Lockset	Passage, Grade 2 Cylindrical, Lever	US26D	
1	Stop	2 3/4" Wall Bumper, Concave	US32D	Mount at Latch Ht.

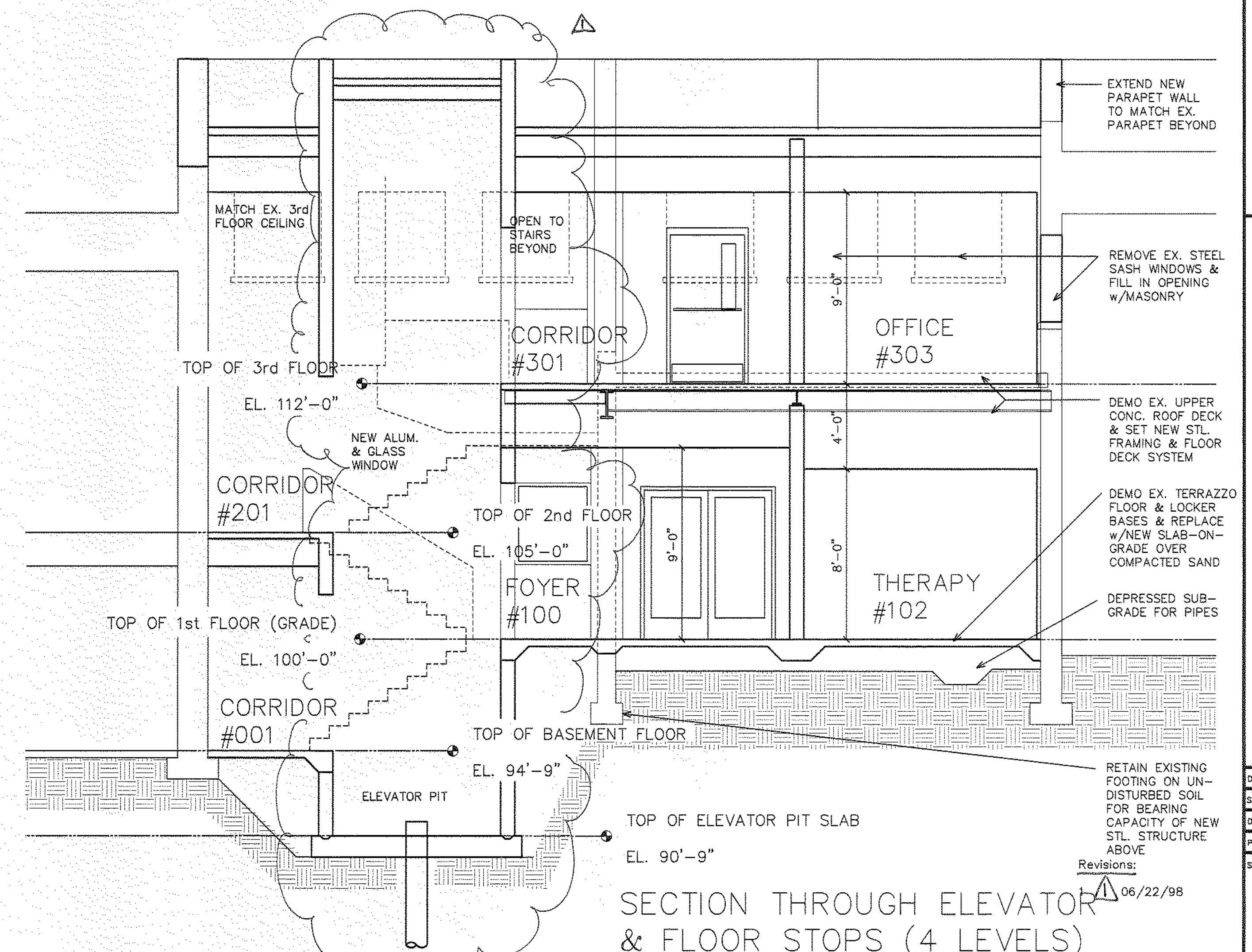
Set 8				
Qty	Type	Description	Finish	Remarks
3	Hinges	4 1/2" x 4 1/2" Full Mortise Butts	US26D	
1	Lockset	Classroom, Grade 2 Cylindrical, Lever	US26D	
1	Stop	2 3/4" Wall Bumper, Concave	US32D	Mount at Latch Ht.



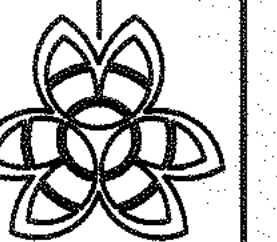
SECTION THROUGH EXISTING STAIRS & NEW ELEVATOR
LOOKING SOUTH

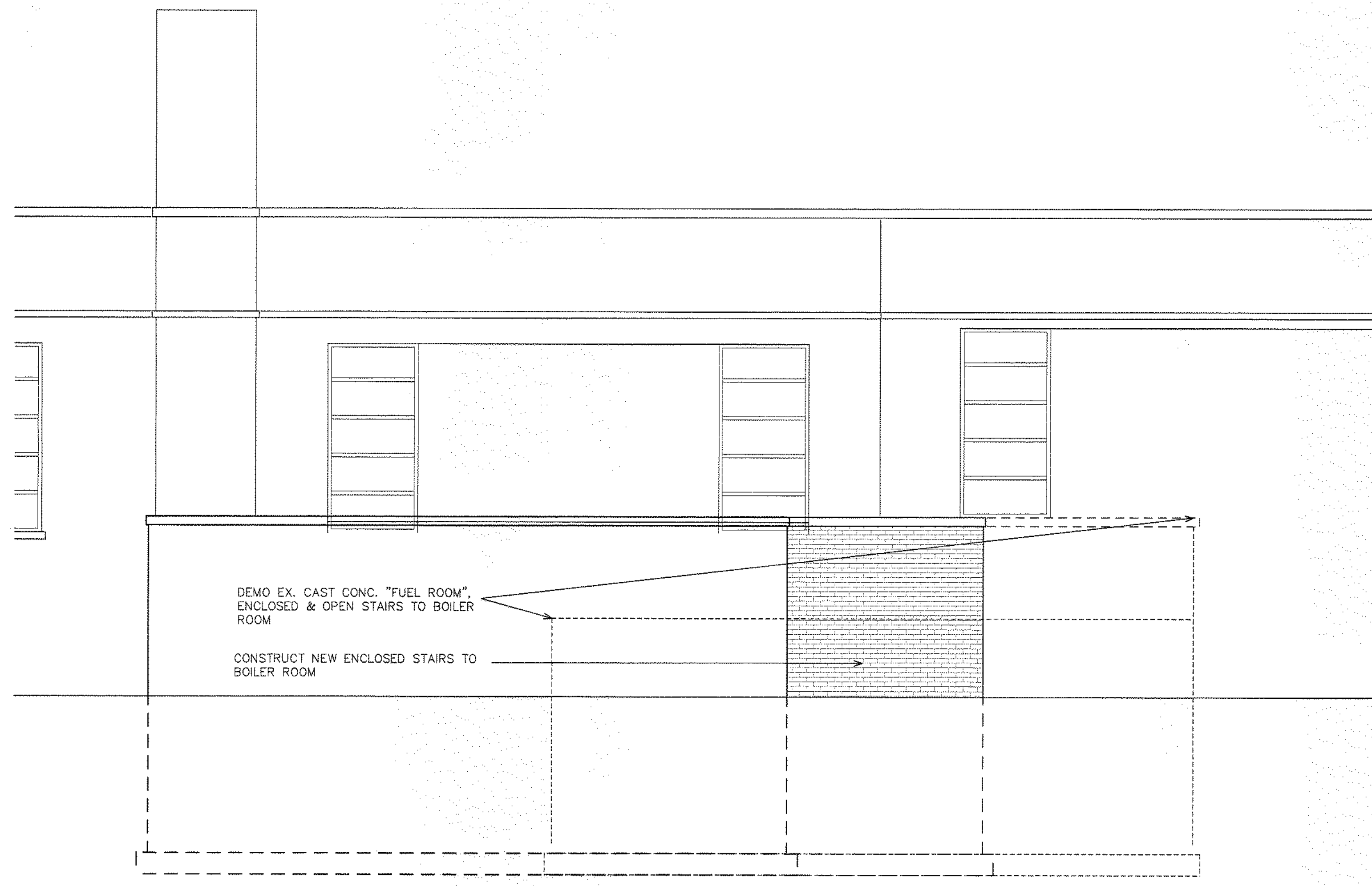


SECTION THROUGH EXISTING STAIRS &
RENOVATED THERAPY ROOM

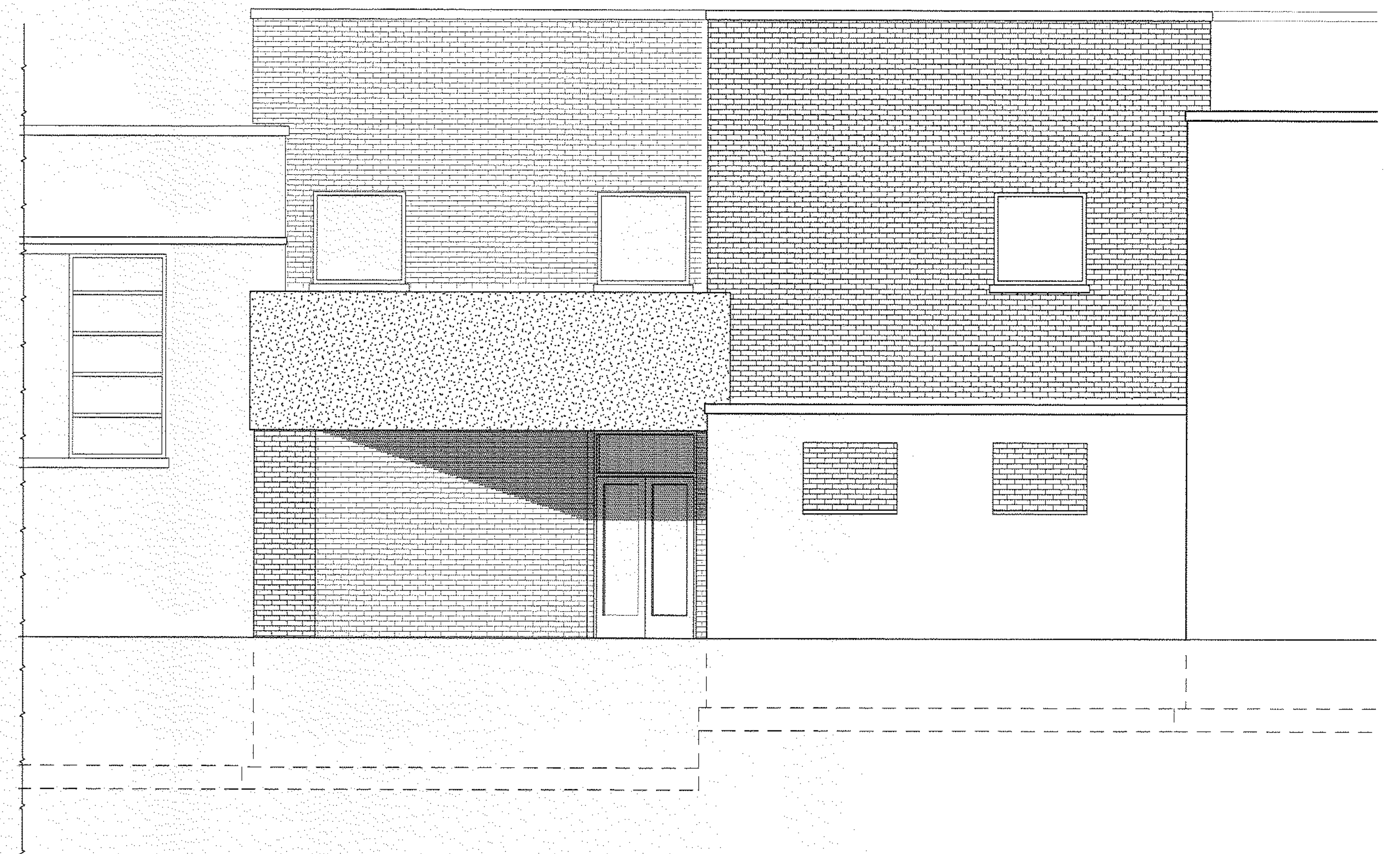


SECTION THROUGH ELEVATOR
& FLOOR STOPS (4 LEVELS)

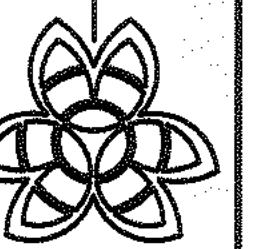




PARTIAL WEST ELEVATION OF
BOILER ROOM & NEW ACCESS STAIRS



PARTIAL WEST ELEVATION FO
NEW ENTRANCE & ELEVATOR



Malzahn Bass & Associates

Derwin H. Bass, AIA - Architect
PO Box 202 Midland MI 48640-0202
Phn: (517) 631-1253 Fax: (517) 631-1170

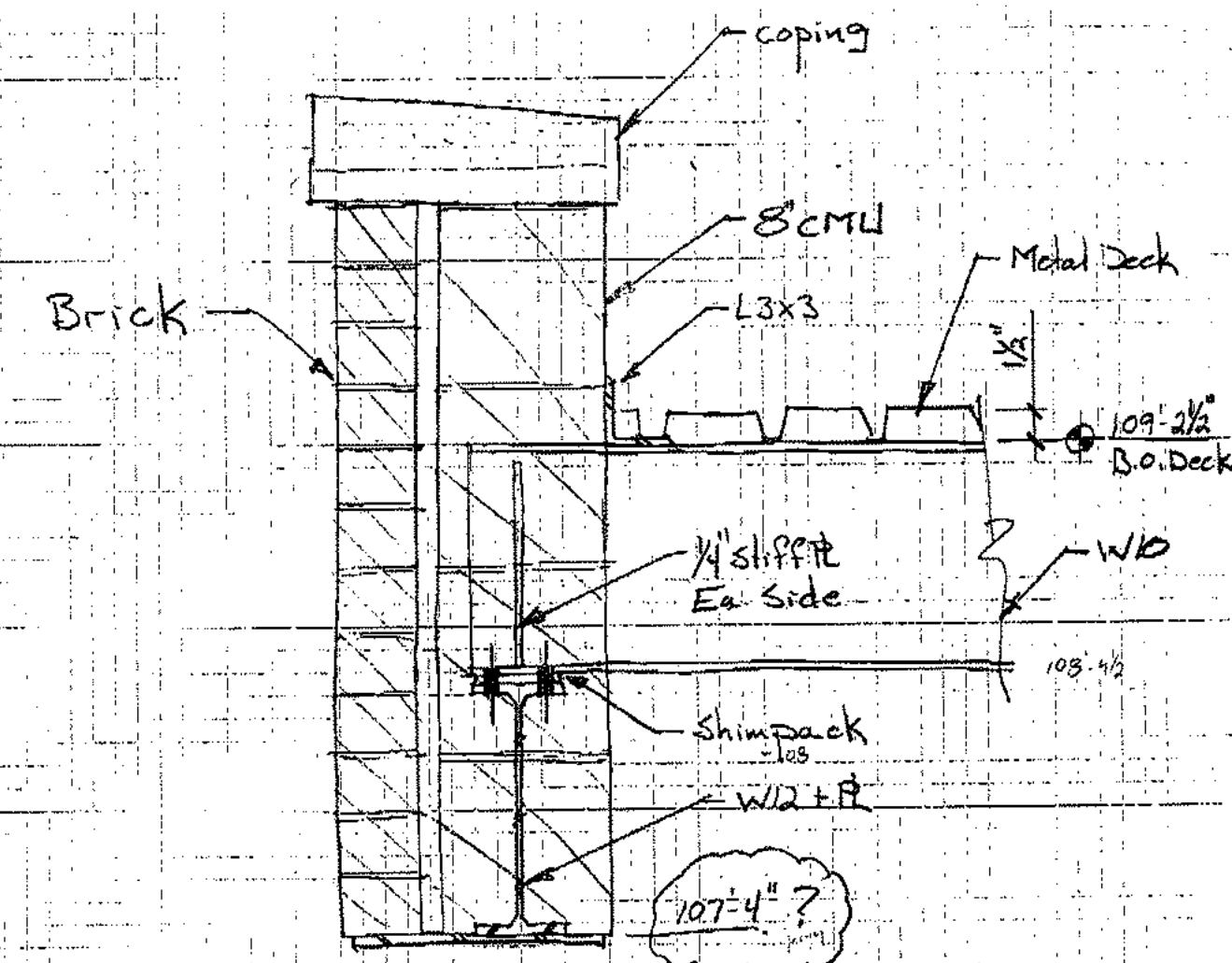
MIDLAND COUNTY EDUCATIONAL SERVICE AGENCY
ELEVATOR ADDITION & RENOVATIONS
TO SUGNET SCHOOL BUILDING
3917 JEFFERSON MIDLAND MI

EXTERIOR & INTERIOR
ELEVATIONS

Date: 12 MAY 1998
Scale: AS NOTED
Dwg By: D. H. BASS
Project No. 97012900
Sheet No.

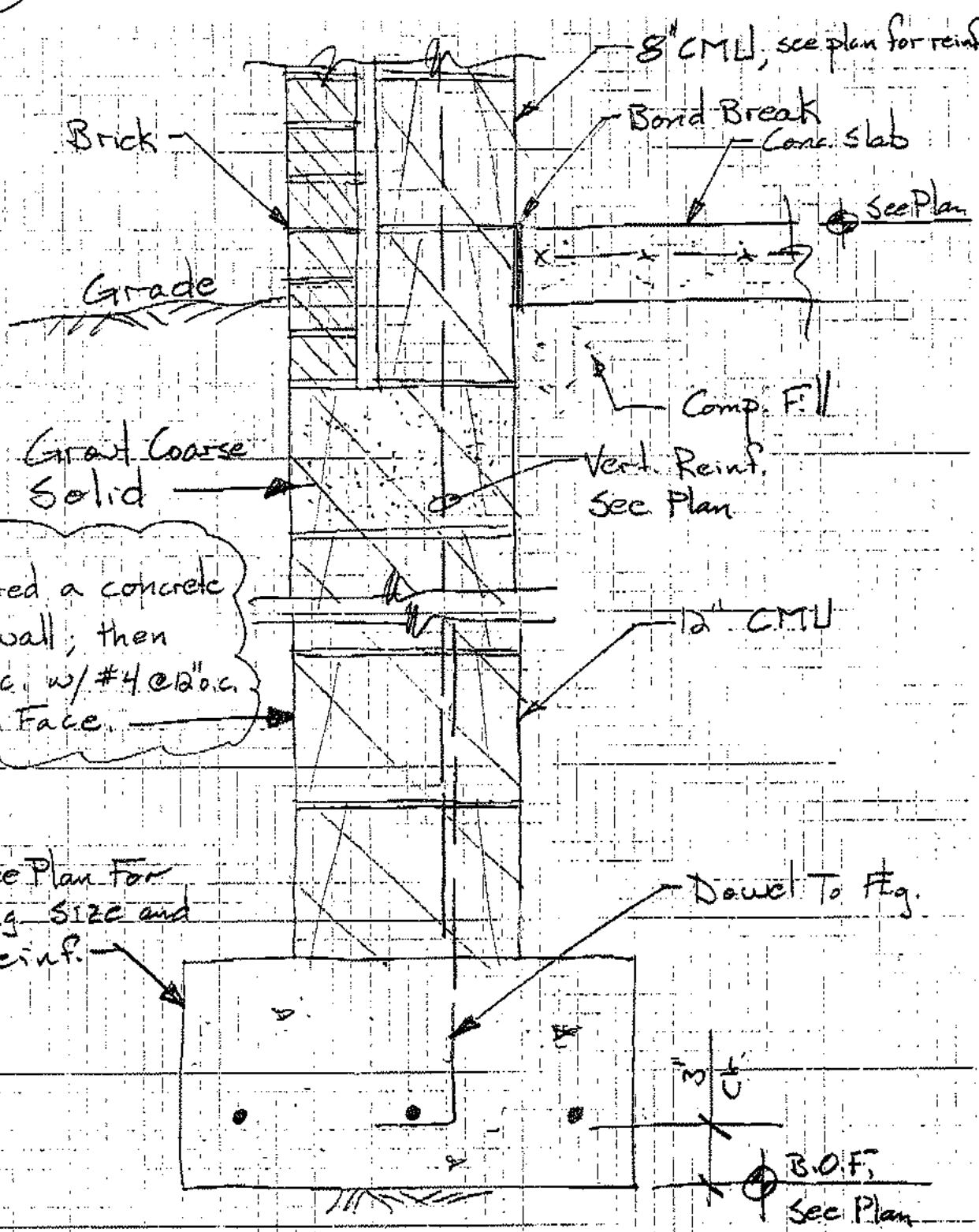
A-7

ADD ALT. A-3 DETAILS



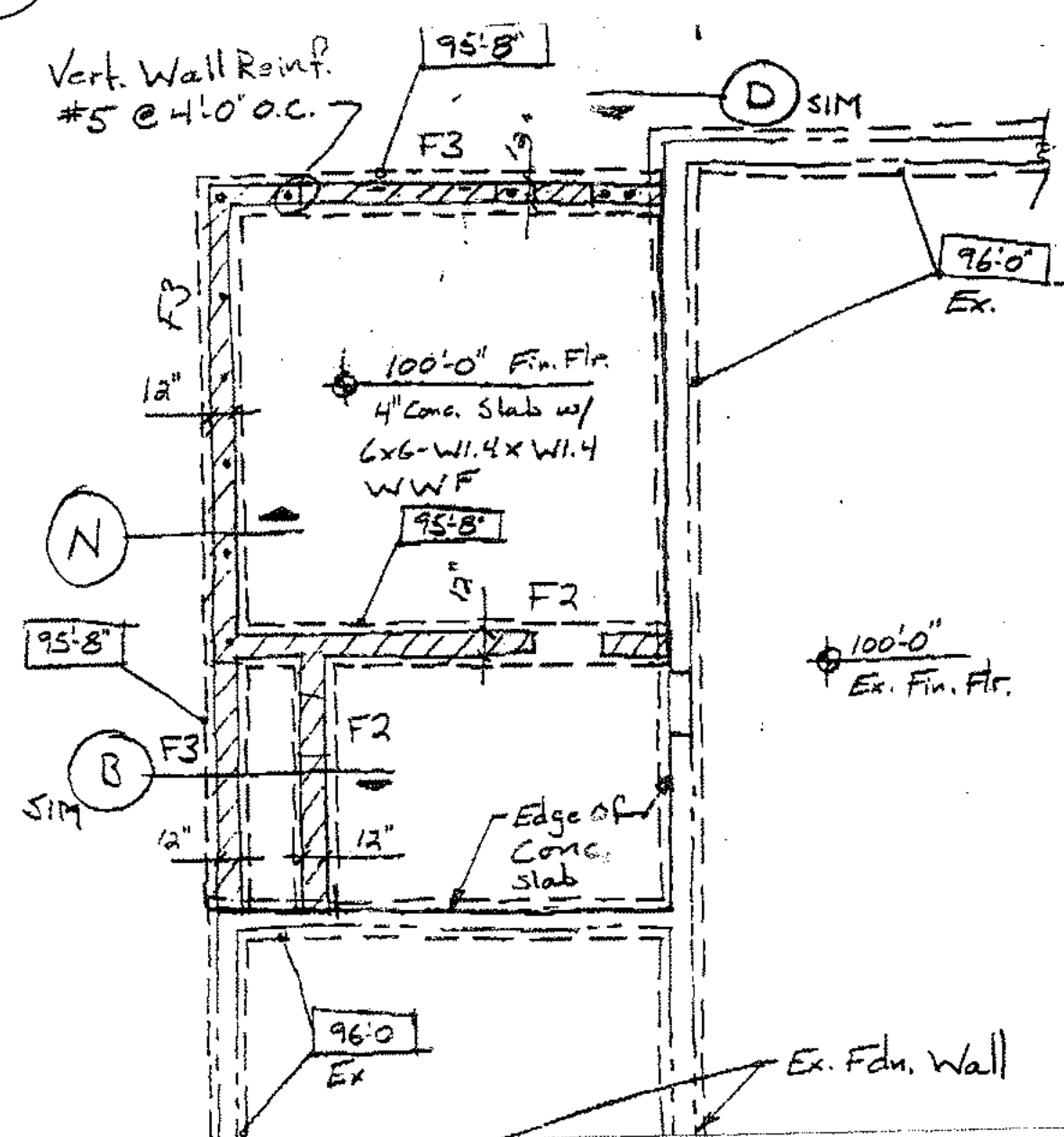
ROOF/OPENING DETAIL

SCALE 1/2" = 1'-0"



FOUNDATION / FLOOR

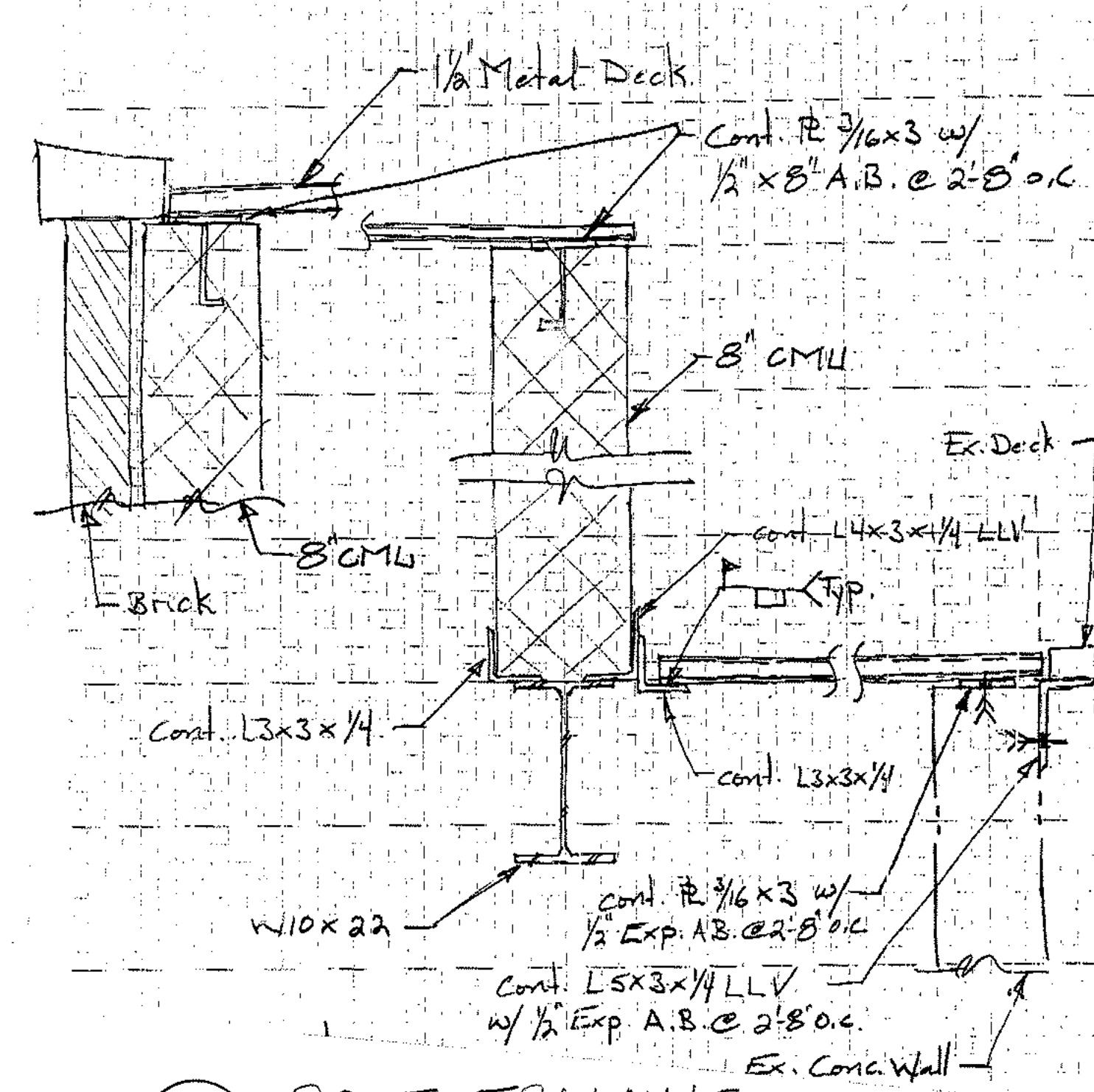
SCALE 1/2" = 1'-0"



FOUNDATION PLAN A-3

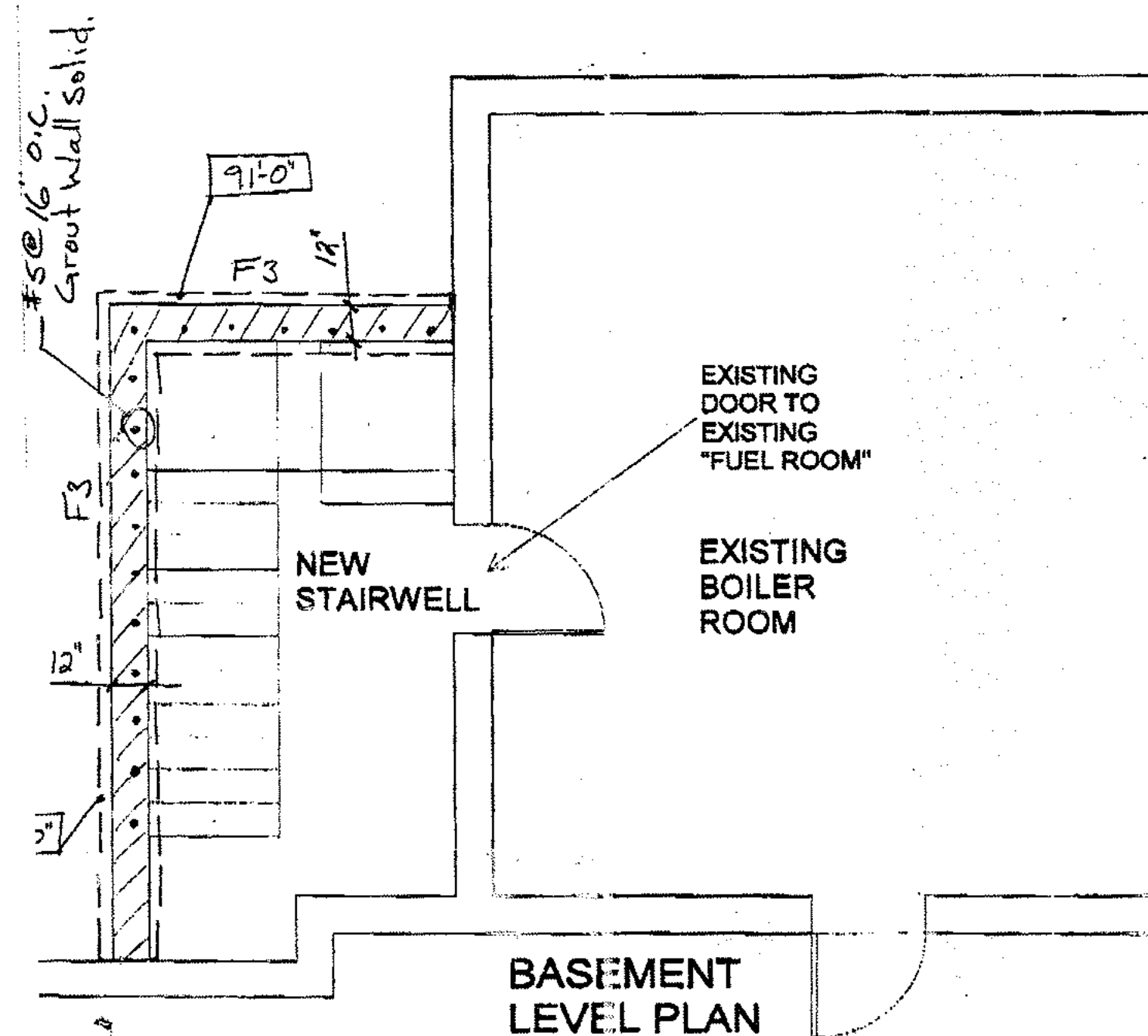
SCALE 1/8" = 1'-0"

ADD ALT. A-1 DETAILS



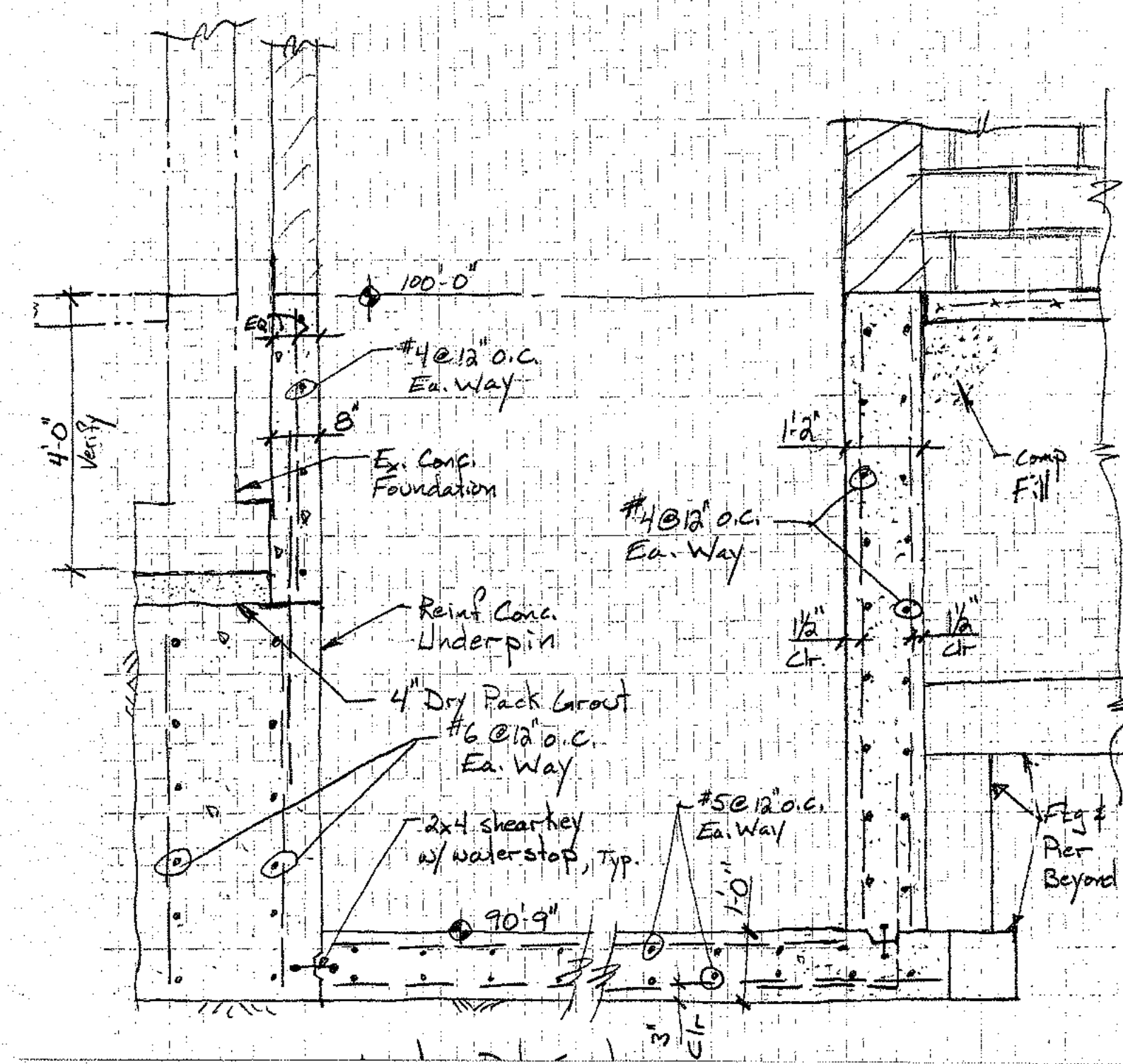
ROOF FRAMING

SCALE 1/2" = 1'-0"



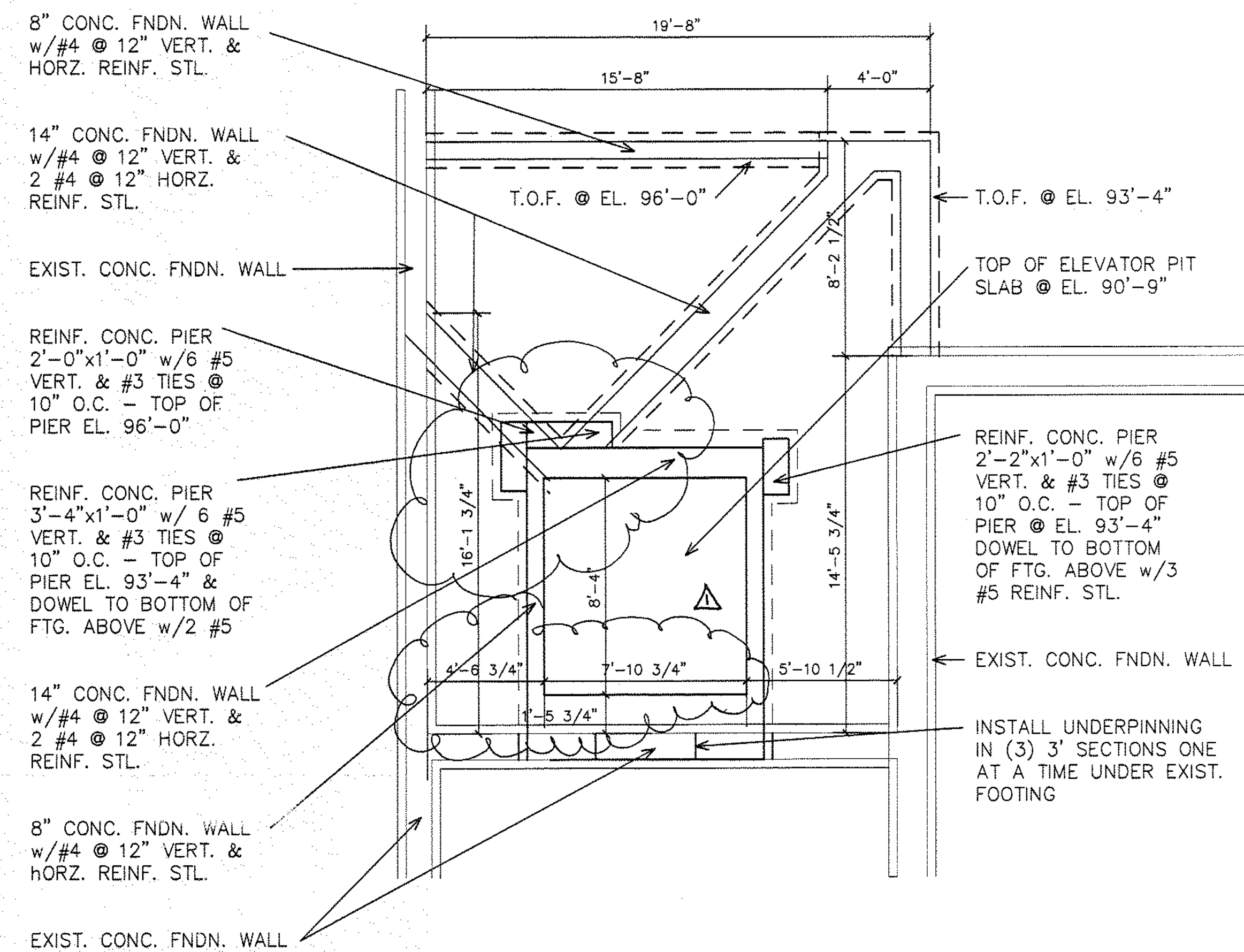
FOUNDATION PLAN A-1

SCALE 1/4" = 1'-0"



ELEVATOR PIT SECTION

SCALE 1/2" = 1'-0"



ELEVATOR FOUNDATION PLAN

SCALE: 1/4" = 1'-0"

Revisions:
1 06/22/98