



**September 14<sup>th</sup>, 2023**

**Midland ESA Additions & Renovations  
Addenda #3**

**TRC Narrative**

See updates for Midland ESA Addenda #3

**Bids Remain Due Tue, September 19<sup>th</sup>, 12pm**

**Documents Included**

- TRC Addenda #3 Narrative
- Revised 10 2113 Toilet Compartments Spec
- Pass thru window (slider window) basis of design
- Final RFI Log & Responses dated 9-14-23
- Masonry Interior Demo clarification

**Updates to Contractor Bid Packages**

All changes listed in Addenda shall apply to bid packages as described in TRC Project Manual under Multiple Contract Summary.

**Demo**

- Review masonry demo clarification attachment for interior scope.
- All interior demo not highlighted for demo by Masonry package shall be by Demo package.

**Masonry**

- Review masonry demo clarification attachment for interior scope.
- All interior demo not highlighted for demo by Masonry package shall be by Demo package.

**Steel**

- Shall fabricate & install custom doors at Enclosed playground and Mechanical Enclosure, refer to RFI #55

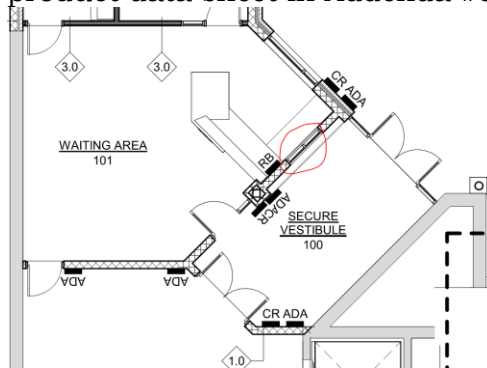
**General Trades**

- Should furnish & install patient lift systems in (3) locations per structural drawings, refer to RFI #56
- Should include door hardware & install for custom doors at exterior, refer to RFI #55
- Shall furnish & install Unistrut grid in Room 142 for owner provided Sensory Swings
- Doors listed as “phenolic” on door schedule shall be furnish & installed as phenolic toilet compartment doors, see revised Toilet Compartment spec.

**Continued on next page**

### **Glass-Glazing**

- Furnish & install pass thru slider window at new Secure Vestibule 100, see product data sheet in Addenda #3 attachment, and sketch below



### **Painting**

- Should include painting for exterior custom steel doors, refer to RFI #55

### **Flooring**

- Flooring contractors should plan for full skim coat at existing floor areas for prep work from removed flooring.

### **Electrical**

- Should include wiring & fire alarm for custom doors per RFI #55

**Brett Fales**

Senior Estimator

Three Rivers Corporation

Phone: 989.631.9726 (Ext. 1103)

Fax: 989.631.3026

Cell: 989.513.7528

[bfales@trccompany.com](mailto:bfales@trccompany.com)

[www.trccompany.com](http://www.trccompany.com)

**MORE THAN CONSTRUCTION**



**TRC**company.com

The 275 Low Profile window is a variation of the popular 275 model. It is the same overall frame size, but features a smaller header for more glass and less metal. The self-closing operating system is located in the header for a track-free service area.

This unit is ideal for use as a sliding reception window, interior pharmacy window, or office pass-through window.

Choose your mode of operation

### MANUAL OPEN / SELF CLOSE

Manual open, with patented hands-free gravity fed self-close. Economical and easy to maintain. Adjustable to manual open/manual close if preferred.

### MANUAL OPEN / ELECTRONIC RELEASE (MOER)

Electromagnetic “hold open” feature paired with a presence sensor offers the control of manual open with a gravity-fed close that won’t release while interacting with customers. Hands free interaction that is easy to maintain.

Locking Hardware



### STANDARD SIZES

- ◇ 47-1/2"W x 43-1/2"H (19"W x 39"H service opening)
- ◇ 47-1/2"W x 35-3/4"H (19"W x 31-1/4"H service opening)
- ◇ 35-3/4"W x 35-3/4"H (13-1/2"W x 31-1/4"H service opening)\*

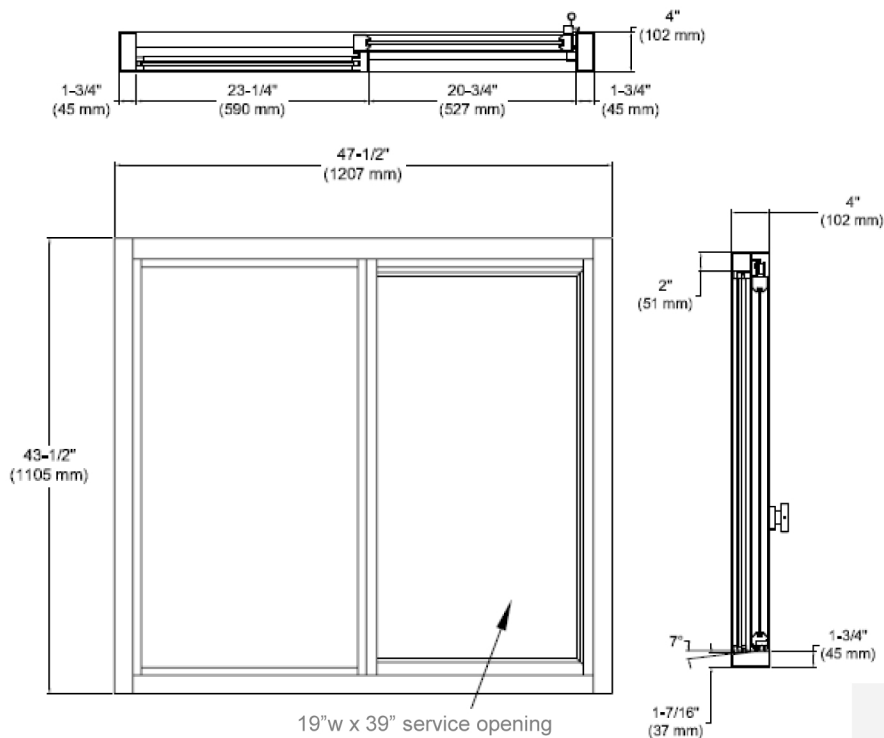
\* Meets CA restricted opening requirement—under 432 square inches

### STANDARD FEATURES:

- ◇ Anodized aluminum extrusions and stainless steel combine to give you an attractive window that will not rust, pit or weather
- ◇ Fully assembled, pre-glazed and ready to install
- ◇ 1/4" Clear Tempered Glass
- ◇ Dark Bronze or Clear Anodized Aluminum
- ◇ Self latches every time it closes. Also includes a thumb turn lock, and night locking bar
- ◇ Track free bottom sill provides for a contaminant free surface. Angled toward outside for drainage toward exterior
- ◇ One year parts & labor limited warranty
- ◇ On-staff tech support / stocked parts / nationwide network of service providers.

### OPTIONAL FEATURES

- ◇ Powder Coat Paint—Tiger Drylac
- ◇ Custom Size
- ◇ Tinted Glazing
- ◇ Low E Glass
- ◇ 5/16" Safety Glass
- ◇ Stainless Steel Shelf to extend sill inside or out (13 ga.)
- ◇ Telescoping Night Time Security Bar Set for additional security
- ◇ Solid Glass Transom
- ◇ Split Transom for AA100 Fly Fan
- ◇ AA300 Heated Air Curtain
- ◇ Restriction Panel or Screen



Specify R/L or L/R from exterior view

### ROUGH OPENING

#### 47-1/2" W x 43-1/2" H

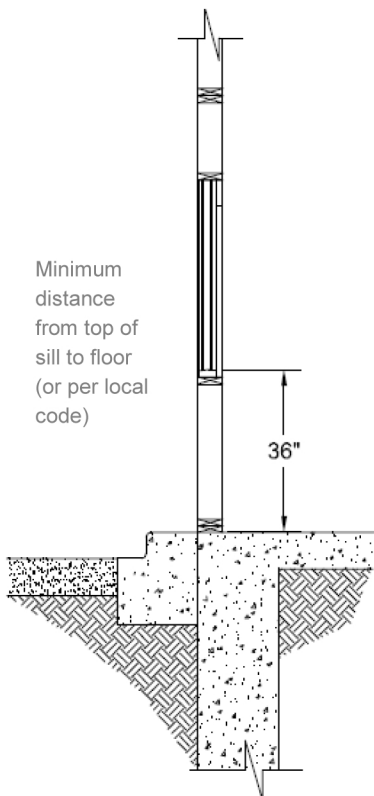
- ◇ Masonry Rough Opening –48"W (1219 mm) x 44"H (1118 mm)
- ◇ Glazing Rough Opening - 47-3/4"W (1213 mm) x 43 3/4"H (1111 mm)

#### 47-1/2" W x 35-3/4" H

- ◇ Masonry Rough Opening –48"W (1219 mm) x 36 1/4"H (921mm)
- ◇ Glazing Rough Opening - 47-3/4" W (1213 mm) x 36"H (914 mm)

#### 35-3/4" W x 35-3/4" H

- ◇ Masonry Rough Opening –36-1/4"H (921mm) x 36-1/4"H (921mm)
- ◇ Glazing Rough Opening - 36"H (914 mm) x 36"H (914 mm)



All windows are shipped completely pre-assembled, fully glazed and ready to install.

Installation / Owners manual can be retrieved online:

[www.ready-access.com](http://www.ready-access.com)

- ◇ Installation illustrations are for reference only. Construction conditions and local codes prevail.
- ◇ Must be installed level, square and plumb.

### ELECTRIC REQUIREMENTS

Run power to header on fixed panel side

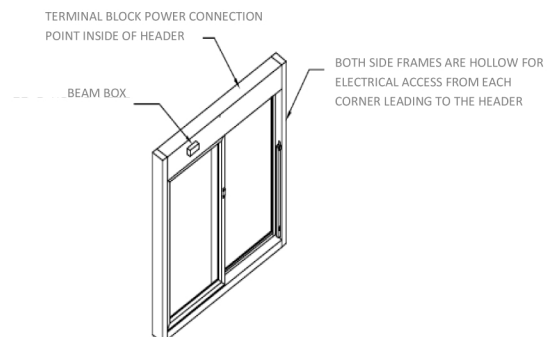
#### Manual Open / Self Close Window:

No Power Required

#### Manual Open / Electronic Release:

115 vac—60Hz with a 15 amp dedicated circuit

Window must be on a dedicated circuit



## SECTION 102113 - PLASTIC TOILET COMPARTMENTS

### PART 1 - GENERAL

#### 1.1 SUMMARY

- A. Section Includes:
  - 1. Solid-plastic toilet compartments and urinal screens.

#### 1.2 ACTION SUBMITTALS

- A. Product Data: For each type of product.
- B. Shop Drawings: For toilet compartments. Include plans, elevations, sections, details, and attachment details.
- C. Samples for each type of toilet compartment material indicated.

#### 1.3 CLOSEOUT SUBMITTALS

- A. Maintenance data.

### PART 2 - PRODUCTS

#### 2.1 PERFORMANCE REQUIREMENTS

- A. Surface-Burning Characteristics: Comply with ASTM E 84; testing by a qualified testing agency. Identify products with appropriate markings of applicable testing agency.
- B. Regulatory Requirements: Comply with applicable provisions in ICC A117.1 for toilet compartments designated as accessible.

#### 2.2 SOLID-PLASTIC TOILET COMPARTMENTS

- A. Manufacturers: Subject to compliance with requirements, provide products by one of the following:
  - 1. Basis-of-Design Product: Global Partitions Corp, an ASI Group Company; **Black Core Phenolic**.
  - 2. Substitutions: See Section 012500 - Product Requirements.
- B. Toilet-Enclosure Style: Floor anchored.
- C. Urinal-Screen Style: Wall hung.
- D. Door, Panel, and Pilaster Construction: Solid, **black core phenolic** panel material, not less than 1 inch (25 mm) thick, seamless, with eased edges, no-sightline system, and with homogenous color and pattern throughout thickness of material.
- E. Pilaster Shoes and Sleeves (Caps): Formed from stainless-steel sheet, not less than 0.031-inch (0.79-mm) nominal thickness and 3 inches (76 mm) high, finished to match hardware.
- F. Brackets (Fittings):
  - 1. Full-Height (Continuous) Type: Manufacturer's standard design; stainless steel.
- G. Panel Finish:
  - 1. Color and Pattern: As indicated on Drawings.

#### 2.3 FULL HEIGHT TOILET COMPARTMENT SYSTEM

- A. Basis of design: **ARIA Toilet Partitions as manufactured by and supplied by Scranton Products.**
  - 1. **Style: Full Height floor mounted overhead braced toilet compartments.**

2. Substitutions: See Section 012500 - Product Requirements.

B. System Construction:

1. System Specified Height: Terminate at ceiling.
2. Doors: 79 inches high. Mounted 1 inch above finished floor.
3. Wall brackets: 54" long heavy duty aluminum with bright hot dip anodized finish. Mount to masonry with ¾" long stainless steel tamper resistant Torx Head Screws.

C. System Design:

1. Door Design: Traditional Series; Model 1000
2. Color: As selected by Architect from Manufacturers full range.
3. Trim: Standard radiused edged 5 inches wide
4. Trim Color: As selected by Architect from Manufacturers full range.

2.4 HARDWARE AND ACCESSORIES

- A. Hardware and Accessories: Manufacturer's heavy-duty stainless steel operating hardware and accessories.
  1. Provide units that comply with regulatory requirements for accessibility at compartments designated as accessible.
  2. Provide continuous piano hinge at all door panels.
- B. Anchorages and Fasteners: Manufacturer's standard exposed fasteners of stainless steel, finished to match the items they are securing, with theft-resistant-type heads. Provide sex-type bolts for through-bolt applications. For concealed anchors, use stainless-steel, hot-dip galvanized-steel, or other rust-resistant, protective-coated steel compatible with related materials.
- C. Hardware for Full Height toilet compartment system listed below:
  1. Hinges: Helix style 78 inches (1.88mm) thick 304-2b stainless steel using a stainless steel pin in 0.234 inch diameter.
  2. Closing degree is minus 5 degrees. Hinge is designed to come to a full close on its own weight.
  3. Occupance Indicator Latch and Housing: Satin Stainless-steel green and red occupancy indicators.
    - a. Latch Housing: Satin Stainless Steel.
    - b. Slide bolt and button: Satin Stainless Steel,
    - c. Door Pulls: Satin Stainless Steel.
  4. Coat hook and Bumper:
    - a. Combination type, chrome plated.
    - b. Equip outswing handicapped doors with second door pull and door stop.

2.5 FABRICATION

- A. Fabrication, General: Fabricate toilet compartment components to sizes indicated. Coordinate requirements and provide cutouts for through-partition toilet accessories where required for attachment of toilet accessories.
- B. Floor-Anchored Units: Provide manufacturer's standard corrosion-resistant anchoring assemblies with leveling adjustment nuts at pilasters for structural connection to floor. Provide shoes at pilasters to conceal anchorage.
- C. Door Size and Swings: Unless otherwise indicated, provide 24-inch- (610-mm-) wide in-swinging doors for standard toilet compartments and 36-inch- (914-mm-) wide out-swinging doors with a minimum 32-inch- (813-mm-) wide clear opening for compartments designated as accessible.

### PART 3 - EXECUTION

#### 3.1 INSTALLATION

- A. General: Comply with manufacturer's written installation instructions. Install units rigid, straight, level, and plumb. Secure units in position with manufacturer's recommended anchoring devices.
  - 1. Maximum Clearances:
    - a. Pilasters and Panels: 1/2 inch (13 mm).
    - b. Panels and Walls: 1 inch (25 mm).
  - 2. Full-Height (Continuous) Brackets: Secure panels to walls and to pilasters with full-height brackets.
    - a. Locate bracket fasteners so holes for wall anchors occur in masonry or tile joints.
    - b. Align brackets at pilasters with brackets at walls.

#### 3.2 ADJUSTING

- A. Hardware Adjustment: Adjust and lubricate hardware according to hardware manufacturer's written instructions for proper operation. Set hinges on in-swinging doors to hold doors open approximately 30 degrees from closed position when unlatched. Set hinges on out-swinging doors to return doors to fully closed position.

END OF SECTION 102113

TRC		Midland ESA Additions & Renovations		Updated	9/14/23	Addenda #3
		Date	Questions & Responses			
1	Q	8/24/2023	When would the HMA paving be done on this project			
1	R	8/24/2023	Spring/Summer 2024			
2	Q	8/28/2023	Can you clarify with me who would be responsible for the scope of the flooring demolition, and who would be responsible for the scope of RESINOUS Flooring/epoxy? That should be Paint right?			
2	R	8/28/2023	Epoxy flooring is by the High Performance Coatings bid package			
3	Q	8/29/2023	Are the existing stone parapet caps to remain? There isn't any demo notes or restoration notes on A5.12, but they are called out on the exterior elevations (A5.10/A5.11)			
3	R	8/29/2023	Refer to Addenda #1, exterior elevations Keynote 32 on A5.10, this work shall be completed under the Masonry Restoration package.			
4	Q	8/29/2023	What's the intent of epoxy base at epoxy floor areas? No details available. Provide detail for epoxy wall base.			
4	R	9/5/2023	Epoxy cove base is to be installed at both new and existing areas as applicable per finish plans.			
5	Q	8/29/2023	Sunshades are shown on roof plan for existing building, but only showed on new windows on new addition per details. What is the intent and the correct scope of work?			
5	R	9/5/2023	Refer to Addendum No 1, keynotes on exterior elevations are shown to match Roof Plan and sunshades now.			
6	Q	8/29/2023	Are there any lighted display boards on the project? Listed on Equipment schedule but not found on drawings.			
6	R	9/5/2023	Lighted display boards tagged EQ-03A,B in Lower Level Makerspace, see Sheet A2.11			
7	Q	8/29/2023	Toilet Accessory schedule appears to not be complete, please clarify.			
7	R	9/5/2023	See Addendum No 1 for updates to Toilet Accessory Schedule			
8	Q	8/29/2023	Need to add outdoor enclosed playground door to door schedule for hardware/door notes, see Sheet A1.10 for hardware/door notes. And so other trades can coordinate, add to electrical sheet E2.10 for power & systems coordination.			
8	R	9/5/2023	This will be addressed in Addendum No. 2 forthcoming			
9	Q	8/29/2023	Have circuits for Mechanical VAB's (Variable air volume boxes) been accounted for on Electrical panels?			
			Yes, there are spares available.			
9	R	9/5/2023	EC is to provide the power & circuits for VAB's. Mechanical will provide transformers and any low voltage control wiring.			
10	Q	8/29/2023	Will there be any other times that I could do a job walk?			
10	R	8/29/2023	Yes, please contact Brett @ TRC and we will coordinate an additional site visit if we have enough interest.			
11	Q	8/29/2023	Who is the preferred or existing controls contractor or system?			
11	R	8/29/2023	Siemens APOGEE BMS is the existing BMS			
12	Q	8/29/2023	Who is the existing fire alarm vendor?			
12	R	8/29/2023	The existing fire alarm is a Simplex 4010 system.			
13	Q	8/29/2023	Are the existing brick walls being furred over and drywalled?			
13	R	8/29/2023	No, finish schedules call for paint on direct.			
14	Q	8/29/2023	Electrical workscope calls for pathways only for data/IT, drawings show otherwise on E4.05. Please clarify.			
14	R	8/29/2023	Clarification: Electrical to install all data cabline, terminate, and test. Owner will be responsible for all patch panel cabling.			
15	Q	8/29/2023	Are all ceiling going to be removed from the existing building?			
15	R	8/29/2023	All ceilings are to be removed within existing buidling. Where drop ceilings are shown on demo plans, antipcate there is also a layer of adhered ceiling tile to bottom of structure.			



16	Q	8/31/2023	There is a spec section for 144200 Wheelchair lifts, can't find any locations on the drawings. Please clarify
16	R	9/5/2023	There are no wheelchair lifts on this project.
17	Q	8/31/2023	Missing spec sections for Standing Seam Roofing & Suspended Metal Channel Grid System, please provide.
17	R	9/5/2023	These will be provided in Addendum No. 2
18	Q	8/31/2023	See spec section 074213.13 Formed Metal Wall Panels, 2.2, B, 1 it says Pac-Clad, but 2.a says 20 gauge, Pac Clad's min. GA is 22.
18	R	9/5/2023	22GA is acceptable, spec revision will come in Addendum No 2
19	Q	8/31/2023	See spec section 074213.13 Formed Metal Wall Panels, 2.2, B, 1, a, 1 says CENTRIA, but 2.d says 1", Centria's flush panel is 1 1/2" thick? med Metal Wall Panels, 2.2, B, 1 it says Pac-Clad, but 2.a says 20 gauge, Pac Clad's min. GA is 22.
19	R	9/5/2023	1.5" is Acceptable for Centria basis of design
20	Q	8/31/2023	See spec section 074213.13 Formed Metal Wall Panels, 2.2, B, 2, e says 3-coat finish, but sheet A3.00 MP-2 says Pac-Clad granite (which is a 2-coat finish), so are both MP-1 and MP-2 required to be 3-coat finishes, if so, that is going to add a lot of cost on the small quantities associated with this project.
20	R	9/5/2023	MP-2 can be a standard 2 coat finish. MP-1 is to be custom color to match ESA's branding and should plan on a 3 coat finish.
21	Q	8/31/2023	Can Morin's F-12-0 be approved for Formed Metal Wall Panels
21	R	9/5/2023	Yes, approved in 22GA, 3 coat finish
22	Q	9/1/2023	Will the ceiling in the gym be removed? Currently it is not called out to be removed but we will need it removed to install fire suppression etc. ?
22	R	9/1/2023	Yes, Gym ceiling will be removed, temporary floor protection will be performed by General Trades.
23	Q	9/5/2023	What type of ceiling will be reinstalled in the gym? Or will it remain exposed?
23	R	9/11/2023	New Tectum Lay in Ceiling. Refer to Addendum #2
24	Q	9/5/2023	1. Can it be clarified which windows (other than the sliding window at the reception desk) are receiving solid surface sills? Detail 8/A3.12 indicates some, but the only section view that includes this detail is 1/A7.04 for room 113; however in the Frame Details Sheets the windows in this room (W1D & W2D) indicate detail 13/A3.12 which does not include a solid surface sill.  2. Elevations 3,4,8-10,14,15/A8.03 all call for the casework to be PLAM-2, but there is no PLAM-2 listed in the Material Schedule; what laminate selection is PL-2?
24	R	9/5/2023	1. Refer to updated Sheet A3.11 in Addenda #2 for areas that receive solid surface sills 2. See Addenda #1 clarifications
25	Q	9/1/2023	1. Drawing E201, in IT003, there is a J3 fixture shown, there is no J3 on the lighting schedule 2. E202 in the center towards the bottom there are A8E fixtures shown, and not on the lighting schedule 3. Can you send the phased schedule I do not see it in the specs? 4. Drawing E205 there is an H Fixture shown in a room (The Hive 131) and no H on the lighting schedule
25	R	9/11/2023	1. Refer to Addendum #2, corrected to J2 Fixture 2. refer to updated Fixture Schedule in Addendum #2 3. See attached. And located within Addenda #1 4. Refer to Addenda #2, all fixtures have been changed for "The Hive 131"
26	Q	9/1/2023	The roof plan is vague on slope, it appears the new construction area is structurally sloped to the outer walls with us supplying crickets. Some places say match slope On existing is it a fill taper system? Are the drains on the old system in the middle? Do you have core samples on the old areas, so we know what we are to tear off? Any extra information would be appreciated.

26	R	9/5/2023	Correct, the new addition is structurally sloped, crickets & tapered insulation as required by Roofer. See pics attached for reference to existing roof conditions and drain locations There are no core samples available.
27	Q	9/5/2023	Please clarify the low voltage cabling scope. HDMI cabling and Data runs are indicated on the electrical plans. Low voltage is not indicated on the electrical scope. Who will be providing the equipment (racks, panels, Wap, etc), cabling, and terminations.
27	R	9/5/2023	Clarification, EC will provide all of these low voltage items, owner will perform final terminations at data rack.
28	Q	9/5/2023	Both Earthwork and Landscape Bid Packages mention Topsoil by others under exclusions?
28	R	9/5/2023	Clarification, Topsoil & rough grading by Earthwork package
29	Q	9/5/2023	Drywall spec mentions abuse resistant board, however I can't seem to find anything anywhere on the drawings requiring this?
29	R	9/11/2023	Utilize at wall type 2.2B up to 70". Remainder of wall height can be standard drywall.
30	Q	9/5/2023	There are two 42000 Unit Masonry Specs in the spec book?
30	R	9/5/2023	Disregard the 2nd Masonry Spec, it follows the first and is a draft, the B-2 brick is highlighted in the spec to be ignored.
31	Q	9/5/2023	Who is to provide the vertical dowels for masonry walls that protrude out of the concrete footings?
31	R	9/5/2023	Concrete contractors will provide all verticals out of the footing.
32	Q	9/5/2023	Masonry Flashing clarifications
32	R	9/5/2023	1. All (2) piece flashings will be provided by Roofing Contractor, and installed by Masonry Contractor, for reference refer to detail 9/A6.11. On existing structure areas, Masonry Restoration contractor will install. 2. Otherwise all flashings provided by Masonry Contractor or Masonry Restoration contractor.
33	Q	9/6/2023	In regards to the MP-1 custom color, 3 coat finish, do they have a color name we can use for this match for pricing?
33	R	9/13/2023	Not available at this time
34	Q	9/5/2023	Looking for the bid scopes where are they located?
34	R	9/5/2023	If you look in the TRC Project Manual under "Multiple Contract Summary" you will find general scopes for bid package as well as Trade Specific.
35	Q	9/6/2023	Drawing A3.01 shows finish RTF-9 in room #001 Corridor, not listed on the material schedule Drawing A3.03 show finish RTF-7 in room #130 Mat Room, not listed on the material schedule
35	R	9/11/2023	All RTF-9 & 7 were removed. Refer to Addendum #1 & 2 for corrections.
36	Q	9/6/2023	075419 PVC Roofing Spec calls out to mechanically fasten base layer insulation, and then adhesive bond additional layers, but then the roof membrane is called out as mechanically attached, Can you please clarify PVC Roofing spec as fully adhered membrane or mechanically attached? And all insulation layers, can they be mechanically attached?
36	R	9/12/2023	all insulation layers can be mechanically fastened, and fully adhere membrane layer
37	Q	9/6/2023	Lower Level Area B in the corridor between Classroom 116 and Classroom 114, walls are called out as 2.3(stud/drywall walls), but appear to be drawn on the plans as masonry walls? Please clarify what these walls are intended to be? Matching existing corridors (Wall 2.1?) or a new stud/gyp wall as noted 2.3
37	R	9/11/2023	Refer to Addendum #2 updated floor plans & wall tags
38	Q	9/6/2023	B-1 & B-2 Brick is listed as Modular size within 42000 Unit Masonry Spec but drawn at 4" tall queen on wall details, please clarify which is correct? Clarification of this brick size will also impact the 1.5" protrusion detail trying to match existing.
38	R	9/13/2023	For bid purposes follow the modular as listed in the spec.

39	Q	9/6/2023	Detail 8/A1.10 Section Enclosure Wall, calls out a B-3 brick, there is no B-3 in the spec or on the drawings on the finish plan. Please clarify? This detail is mentioned for Enclosed Outdoor Playground Room 185, as well as the new Mechanical Enclosure at Area B, outside of existing Storage Room 105D, as well as the Dumpster Enclosure.
39	R	9/11/2023	Refer to Add #2, it has been added to the finish schedule
40	Q	9/6/2023	Are (2) courses of 8" CMU acceptable in lieu of (1) 16" CMU for below grade foundation walls?
40	R	9/11/2023	Yes, this is acceptable
41	Q	9/6/2023	There are no bonding details called out any horizontal reinforcing for bond beams, top of wall conditions, etc? Please clarify if any of these are required.
41	R	9/11/2023	Refer to updated architectural wall details from Addenda #2
42	Q	9/6/2023	Wall detail type 1 on G0.01 calls out spray foam insulation, however Masonry spec 42000 calls out Cavity Wall insulation as EPS, please clarify
42	R	9/6/2023	Utilize the EPS per the masonry spec.
43	Q	9/6/2023	Detail 8/A3.10 calls out a bullnose brick & block jamb detail, this is only applicable to one opening on 103B.1 on the Door Schedule, which is an exterior door? Is this correct? Please clarify.
43	R	9/13/2023	Yes this is correct, include this detail for now as shown.
44	Q	9/6/2023	CSI Request for approval of ASI Visual Displays as approved manufacturer.
44	R	9/12/2023	approved
45	Q	9/6/2023	Toilet Rooms 104C and 104D called out as WFT-2, however elevations 15/A8.03 shows partial height wall tile, while 16/A8.03 shows full height wall tile. WFT-2 on Finish Schedule A3.00 calls out 6'5" wall tile. Please clarify which is correct and what detail we are to follow? Assuming we will be following all wall tags? Such as WFT-2.
45	R	9/11/2023	The type listed in the room finish tags are the majority of the room finish.
46	Q	9/7/2023	I noticed there were unit prices in the front end spec but not on the bid form , are these required?
46	R	9/7/2023	Yes, the bid form will be revised and re-released, include all unit prices as applicable per your trade.
47	Q	9/7/2023	Are the demo contractors to remove the existing windows? Since the building will be occupied and we'll be coordinating those window replacement areas with the owner and per the sequencing plan, our intent was to have Glass-Glazing responsible for removal & replacement so that we may be able to minimize temp openings etc. as much as possible.
47	R	9/7/2023	Glass-Glazing to remove & replace openings at the same time, keeps less multiple contractor coordination for easier transistions and flow of work.
48	Q	9/7/2023	Sheet M2.01 adjacent to restroom area says " reroute storm line in soffit" Any idea what size this is?
48	R	9/13/2023	unknown at this time, verify in field, qualify in your proposal what sizing you have included for this.
49	Q	9/7/2023	Is PVC acceptable for above grade sanitary storm and vent piping?
49	R	9/11/2023	Yes, PVC is acceptable
50	Q	9/8/2023	Is there any curb and gutter on this project? I didn't see anything noted on the drawings for this.
50	R	9/11/2023	As of right now, per the site plan , there's only a replacement section out at the new tie in on Jefferson Rd
51	Q	9/8/2023	Who is responsible for the solid surface window sills? Wouldn't this be something the casework division would need to include?
51	R	9/11/2023	Yes, Casework to furnish & install all solid surface window sills
52	Q	9/11/2023	When is this project supposed to start? See attached sequenced phasing plan included in bid documents
52	R	9/11/2023	The new main school addition starts this fall Then once we move inside to renovate a floor area (i.e. Lower Level A) we renovate & turn this area only over prior to moving to the next one.

53	Q	9/11/2023	Is a bid bond/ bid security required? Are prevailing wages required? Are background checks required?
53	R	9/11/2023	No to all 3 questions
54	Q	9/11/2023	Adjacent to Storage Room 105D there appears to be some walls & a door? They look new and are not located on the structural drawings?
54	R	9/11/2023	This is a new mechanical unit enclosure, Elevation tags on A2.12 refer to wall detail A1.10 w/ construction details
55	Q	9/11/2023	The door on the enclosed playground appears similar to the mechanical enclosure, and they are both not located on the door schedule.
55	R	9/11/2023	Scope clarifications on this item, refer to detail 5/A1.10 and other details on this sheet for reference to this scope. Structural & Misc. Steel package-Fabricate & install steel doors/frames/hinges etc per details. Include coordination & prep of door for hardware install. General Trades-Include hardware & installation on both these door locations. Painting-Include coating of steel at these locations Electrical-Include wiring to fire alarm system for egress during an alarm trip.
56	Q	9/12/2023	Reflected ceiling plan A9.12 shows the patient lift in rooms 130 and 134, while structural on S2.02 shows (3) locations, please clarify.
56	R	9/12/2023	Furnish & install for (3) locations per the structural drawings.
57	Q	9/12/2023	What light fixtures are we to use in the gym since the ceiling is being replaced and the fixtures won't be retrofitted
57	R	9/12/2023	"Type K will no longer be used as a retrofit as they are going to be putting in a new ceiling in the gym. See new part number for the LTHO light fixture.
58	Q	9/12/2023	any idea what the floor conditions are going to be ??? Trying to figure out how much floor prep to add in
58	R	9/12/2023	Plan on a skim coat , unless you can verify or assume otherwise from your site visits.
59	Q	9/11/2023	Where is the climbing wall located?
59	R	9/12/2023	Located in Room 142 from Addendum #2 drawings.
60	Q	9/12/2023	Are payment and performance bonds required?
60	R	9/12/2023	No, they are not required for bid packages
61	Q	9/12/2023	per the concrete work scope – it mentions to infill all interior floor slab from new underground plumbing. Nothing is noted on the architectural demo drawings or plumbing. Is there a standard trench size you and the architect desire?
61	R	9/12/2023	There some patching that will occur from new foundations in Area C Assume all plumbing trench infills to be 2' wide. There's nothing noted on architectural demo or structural drawings, however review the plumbing undergrounds and demo to see the new lines required and saw cutting (by demo package)
62	Q	9/13/2023	We still need to know if the existing roof system will be fully tapered ISO?
62	R	9/13/2023	Review pictures of existing roof provided in Addenda #1 for reference and verification of drain locations. Yes, include fully tapered ISO for existing roof areas

63 Q 9/13/2023 can specs be provided for the boot system hardware and for the phenolic doors?

1.<https://lockoutusa.com/the-boot/>  
Include standard storage box, strap for door, and floor sleeves.

63 R 9/13/2023 2. Price the doors you've located on the schedule as phenolic per the toilet partition doors, not as a HM frame & "phenolic" door.  
See revised toilet partition spec in Addenda #3 for reference.

64 Q 9/13/2023 Who is responsible for the unistruct channel ceiling ?  
Is there a spec for EQ-03B? lighted displays? Who is responsible for these

Unistrut for patient lifts systems if by General Trades  
Unistrut for any acoustical panels etc. to be included by Acoustical

64 R 9/13/2023 Lighted displays are found in the Visual Displays Spec.  
Visual Displays is a separate bid package, not to be included by General Trades.

65 Q 9/13/2023 Who is to provide the unistrut system in Room 142 for Sensory Swings support?

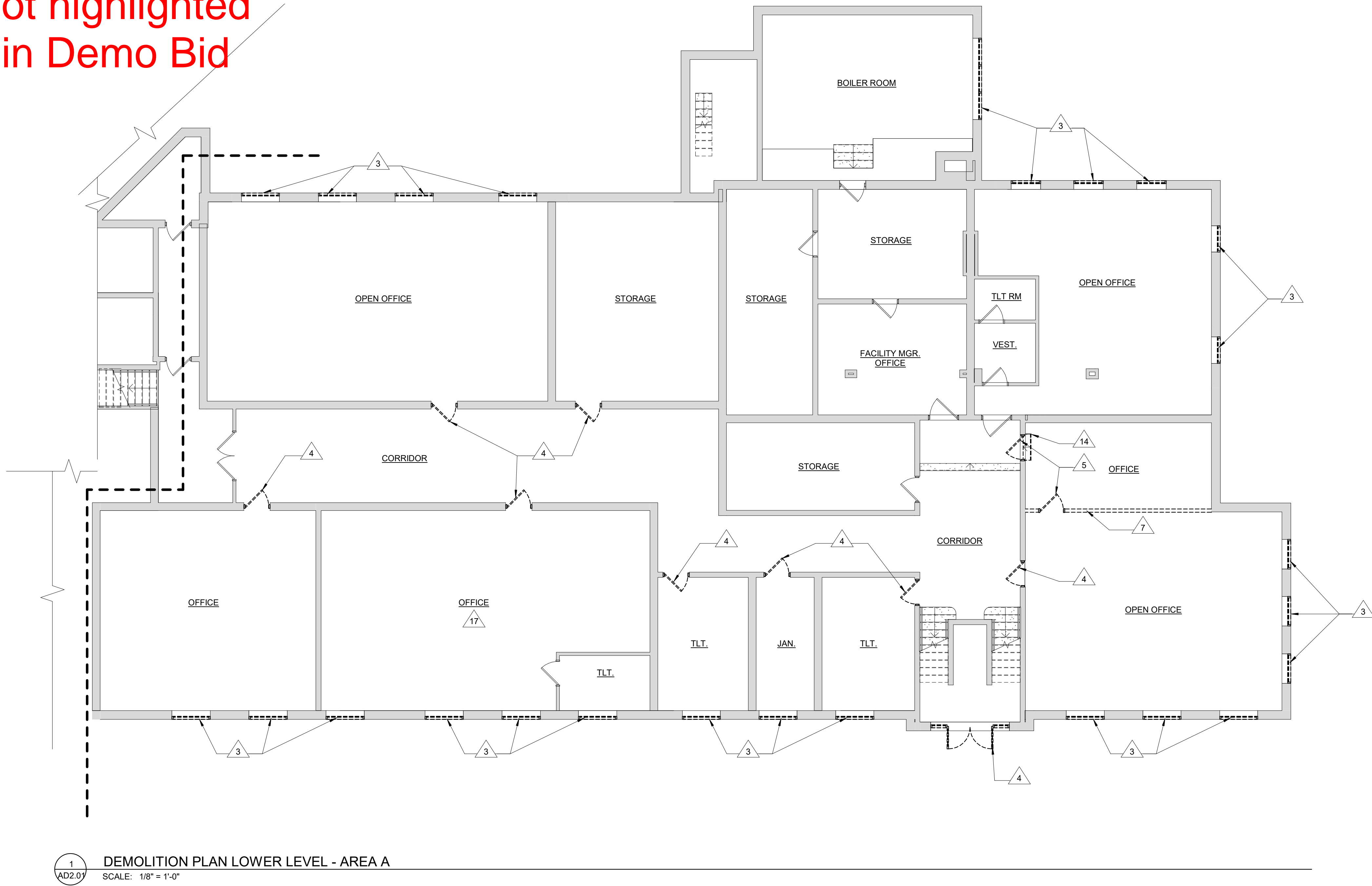
65 R 9/13/2023 General Trades shall furnish & install this unistrut grid.

Highlighted areas to be included by Masonry package for interior demo/toothing.

Not representative of all "infill" work , review wall details on floor plans for other masonry infill areas.

All other wall demo not highlighted is to be included within Demo Bid Package.

Masonry Demo clarification Reference only



DEMOLITION LEGEND:

- DEMOLITION
- EXISTING TO REMAIN
- PORTIONS OF EXISTING BUILDING TO BE DEMOLISHED - REFER TO PHASING PLAN FOR SCOPE OF DEMOLITION AT EACH PHASE
- PORTION OF SLAB AND FLOOR FRAMING TO BE REMOVED FOR NEW WORK - REFER TO STRUCTURAL DRAWINGS FOR ADDITIONAL INFORMATION

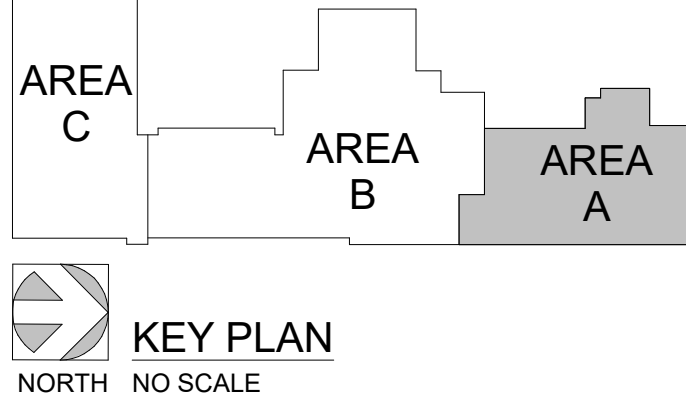
DEMOLITION GENERAL NOTES:

- ELEMENTS OR PORTIONS OF ELEMENTS TO BE REMOVED ARE SHOWN DASHED, REFER TO KEY NOTES FOR ADDITIONAL CLARIFICATION.
- VERIFY EXISTING CONDITIONS OF SPACE PRIOR TO DEMOLITION WORK.
- AREAS OF DEMOLITION ARE APPROXIMATE; GENERAL CONTRACTOR TO COORDINATE DEMOLITION WITH EXISTING CONDITIONS, NEW CONSTRUCTION, AND ADDITIONAL SCOPE OF WORK INCLUDED IN MECHANICAL, PLUMBING, AND ELECTRICAL DOCUMENTS.
- WALL DEMOLITION TO INCLUDE FRAMING, SHEATHING, FINISHES AND ALL ASSOCIATED COMPONENTS
- ANY HIDDEN STRUCTURAL COLUMNS OR SUPPORT TO BE BROUGHT TO THE ATTENTION OF THE ARCHITECT PRIOR TO REMOVAL. ANY BUILDING SUPPORT WHICH DEVIATES FROM THAT SHOWN OR IS IN QUESTION TO BE BROUGHT TO ARCHITECT'S ATTENTION IMMEDIATELY.
- SEE MECHANICAL, PLUMBING, AND ELECTRICAL DOCUMENTS FOR REMOVAL AND CAPPING OF SERVICES FOR ITEMS SHOWN TO BE REMOVED.

DEMOLITION KEYNOTES

- REMOVE CEILING AND PREP FOR NEW CEILING
- EXISTING SERVER TO BE RELOCATED, RE: ELECTRICAL
- REMOVE WINDOW AND FRAME, PREPARE OPENING TO RECEIVE NEW WINDOW
- REMOVE DOOR AND FRAME, PREPARE OPENING FOR NEW DOOR AND FRAME
- REMOVE DOOR AND FRAME, PREPARE OPENING FOR BRICK INFILL
- REMOVE PORTION OF EXISTING WALL FOR NEW OPENING OR DOOR AS SCHEDULED, RE: STRUCTURAL
- REMOVE EXISTING WALL CONSTRUCTION FROM FINISH FLOOR TO BOTTOM OF STRUCTURE
- REMOVE DOOR AND FRAME
- REMOVE EXISTING GATE
- REMOVE WINDOW AND FRAME, PREPARE OPENING FOR NEW BRICK INFILL TO MATCH ADJACENT BRICK
- REMOVE FOLDING PANEL PARTITION
- OPENINGS TO BE INFILLED
- REMOVE VENT AND PREP FOR BRICK INFILL
- REMOVE EXISTING STAIR STRUCTURE COMPLETE
- REMOVE EXISTING PLUMBING FIXTURES
- REMOVE EXISTING TOILET PARTITIONS AND ASSOCIATED HARDWARE
- REMOVE ALL EXISTING BUILT-IN CASEWORK IN THE ROOM.

	ISSUED FOR BID	08/23/
NO.	REVISION	DAT



WTA ARCHITECTS

100 S Jefferson Ave, Suite 601  
Saginaw, Michigan 48607  
989 752 8107

WTAARCH.COM

COPYRIGHT © 2023

PROJECT TITLE  
RENOVATION AND  
ADDITION:  
MIDLAND COUNTY ESA

MIDLAND, MICHIGAN

SHEET TITLE  
DEMOLITION PLAN -  
AREA A - LOWER LEVEL

PROJECT NUMBER 2022006.1	SHEET NUMBER
PROJECT DATE AUGUST 23, 2023	AD2.01
CHECKED BY JMJ	



Highlighted areas to be included by Masonry package for interior demo/toothing.

Not representative of all "infill" work , review wall details on floor plans for other masonry infill areas.

All other wall demo not highlighted is to be included within Demo Bid Package.

# Masonry Demo clarification Reference only



1  
AD2.02  
DEMOLITION PLAN MAIN LEVEL - AREA B  
SCALE: 1/8" = 1'-0"

DEMOLITION LEGEND:

- DEMOLITION
- EXISTING TO REMAIN
- PORTIONS OF EXISTING BUILDING TO BE DEMOLISHED - REFER TO PHASING PLAN FOR SCOPE OF DEMOLITION AT EACH PHASE
- PORTION OF SLAB AND FLOOR FRAMING TO BE REMOVED FOR NEW WORK - REFER TO STRUCTURAL DRAWINGS FOR ADDITIONAL INFORMATION

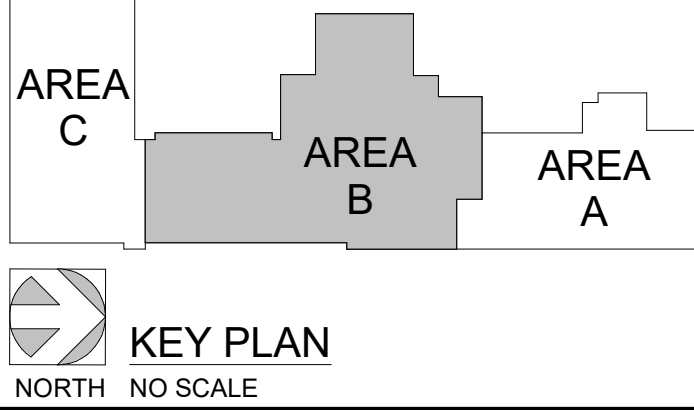
DEMOLITION GENERAL NOTES:

- ELEMENTS OR PORTIONS OF ELEMENTS TO BE REMOVED ARE SHOWN DASHED, REFER TO KEY NOTES FOR ADDITIONAL CLARIFICATION.
- VERIFY EXISTING CONDITIONS OF SPACE PRIOR TO DEMOLITION WORK.
- AREAS OF DEMOLITION ARE APPROXIMATE; GENERAL CONTRACTOR TO COORDINATE DEMOLITION WITH EXISTING CONDITIONS, NEW CONSTRUCTION, AND ADDITIONAL SCOPE OF WORK INCLUDED IN MECHANICAL, PLUMBING, AND ELECTRICAL DOCUMENTS.
- WALL DEMOLITION TO INCLUDE FRAMING, SHEATHING, FINISHES AND ALL ASSOCIATED COMPONENTS
- ANY HIDDEN STRUCTURAL COLUMNS OR SUPPORT TO BE BROUGHT TO THE ATTENTION OF THE ARCHITECT PRIOR TO REMOVAL. ANY BUILDING SUPPORT WHICH DEVIATES FROM THAT SHOWN OR IS IN QUESTION TO BE BROUGHT TO ARCHITECT'S ATTENTION IMMEDIATELY.
- SEE MECHANICAL, PLUMBING, AND ELECTRICAL DOCUMENTS FOR REMOVAL AND CAPPING OF SERVICES FOR ITEMS SHOWN TO BE REMOVED.

# DEMOLITION KEYNOTES

- REMOVE CEILING AND PREP FOR NEW CEILING
- EXISTING SERVER TO BE RELOCATED, RE: ELECTRICAL
- REMOVE WINDOW AND FRAME, PREPARE OPENING TO RECEIVE NEW WINDOW
- REMOVE DOOR AND FRAME, PREPARE OPENING FOR NEW DOOR AND FRAME
- REMOVE DOOR AND FRAME, PREPARE OPENING FOR BRICK INFILL
- REMOVE PORTION OF EXISTING WALL FOR NEW OPENING OR DOOR AS SCHEDULED, RE: STRUCTURAL
- REMOVE EXISTING WALL CONSTRUCTION FROM FINISH FLOOR TO BOTTOM OF STRUCTURE
- REMOVE DOOR AND FRAME
- REMOVE EXISTING GATE
- REMOVE WINDOW AND FRAME, PREPARE OPENING FOR NEW BRICK INFILL TO MATCH ADJACENT BRICK
- REMOVE FOLDING PANEL PARTITION
- OPENINGS TO BE INFILLED
- REMOVE VENT AND PREP FOR BRICK INFILL
- REMOVE EXISTING STAIR STRUCTURE COMPLETE
- REMOVE EXISTING PLUMBING FIXTURES
- REMOVE EXISTING TOILET PARTITIONS AND ASSOCIATED HARDWARE
- REMOVE ALL EXISTING BUILT-IN CASEWORK IN THE ROOM.

	ISSUED FOR BID	08/23/23
NO.	REVISION	DATE



WTA ARCHITECTS  
100 S Jefferson Ave, Suite 601  
Saginaw, Michigan 48607  
989 752 8107  
COPYRIGHT © 2023

PROJECT TITLE  
RENOVATION AND  
ADDITION:  
MIDLAND COUNTY ESA

MIDLAND, MICHIGAN

SHEET TITLE  
DEMOLITION PLAN -  
AREA B - MAIN LEVEL

PROJECT NUMBER 2022006.1	SHEET NUMBER
PROJECT DATE AUGUST 23, 2023	AD2.02
CHECKED BY JMJ	

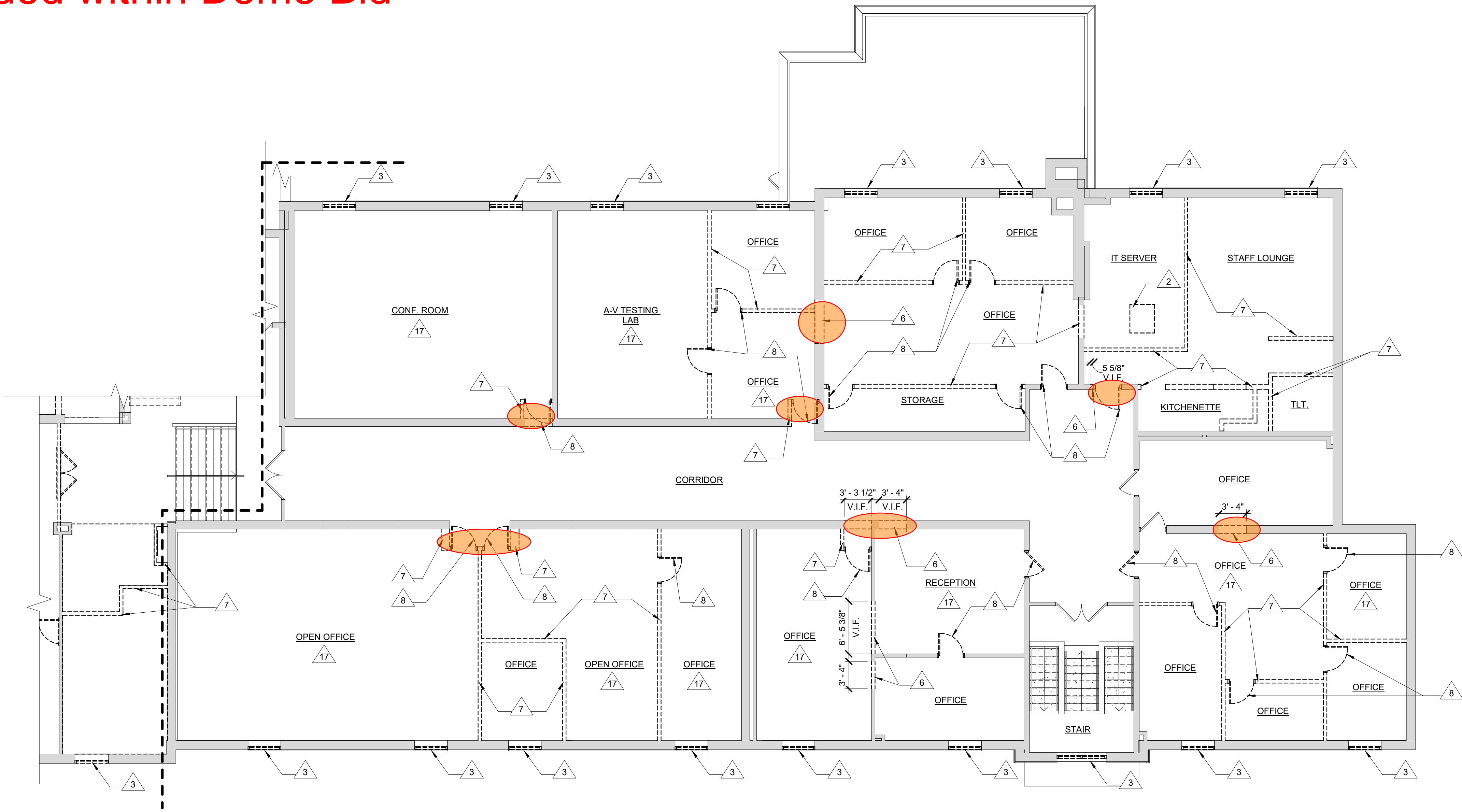


Highlighted areas to be included by Masonry package for interior demo/toothing.

Not representative of all "infill" work , review wall details on floor plans for other masonry infill areas.

All other wall demo not highlighted is to be included within Demo Bid Package.

Masonry Demo clarification Reference only



1  
AD2.03  
DEMOLITION PLAN UPPER LEVEL - AREA A  
SCALE: 1/8" = 1'-0"

DEMOLITION LEGEND:

- DEMOLITION
- EXISTING TO REMAIN
- PORTIONS OF EXISTING BUILDING TO BE DEMOLISHED - REFER TO PHASING PLAN FOR SCOPE OF DEMOLITION AT EACH PHASE
- PORTION OF SLAB AND FLOOR FRAMING TO BE REMOVED FOR NEW WORK - REFER TO STRUCTURAL DRAWINGS FOR ADDITIONAL INFORMATION

DEMOLITION GENERAL NOTES:

- ELEMENTS OR PORTIONS OF ELEMENTS TO BE REMOVED ARE SHOWN DASHED, REFER TO KEY NOTES FOR ADDITIONAL CLARIFICATION.
- VERIFY EXISTING CONDITIONS OF SPACE PRIOR TO DEMOLITION WORK.
- AREAS OF DEMOLITION ARE APPROXIMATE; GENERAL CONTRACTOR TO COORDINATE DEMOLITION WITH EXISTING CONDITIONS, NEW CONSTRUCTION, AND ADDITIONAL SCOPE OF WORK INCLUDED IN MECHANICAL, PLUMBING, AND ELECTRICAL DOCUMENTS.
- WALL DEMOLITION TO INCLUDE FRAMING, SHEATHING, FINISHES AND ALL ASSOCIATED COMPONENTS
- ANY HIDDEN STRUCTURAL COLUMNS OR SUPPORT TO BE BROUGHT TO THE ATTENTION OF THE ARCHITECT PRIOR TO REMOVAL. ANY BUILDING SUPPORT WHICH DEVIATES FROM THAT SHOWN OR IS IN QUESTION TO BE BROUGHT TO ARCHITECT'S ATTENTION IMMEDIATELY.
- SEE MECHANICAL, PLUMBING, AND ELECTRICAL DOCUMENTS FOR REMOVAL AND CAPPING OF SERVICES FOR ITEMS SHOWN TO BE REMOVED.

# DEMOLITION KEYNOTES

- REMOVE CEILING AND PREP FOR NEW CEILING
- EXISTING SERVER TO BE RELOCATED, RE: ELECTRICAL
- REMOVE WINDOW AND FRAME, PREPARE OPENING TO RECEIVE NEW WINDOW
- REMOVE DOOR AND FRAME, PREPARE OPENING FOR NEW DOOR AND FRAME
- REMOVE DOOR AND FRAME, PREPARE OPENING FOR BRICK INFILL
- REMOVE PORTION OF EXISTING WALL FOR NEW OPENING OR DOOR AS SCHEDULED, RE: STRUCTURAL
- REMOVE EXISTING WALL CONSTRUCTION FROM FINISH FLOOR TO BOTTOM OF STRUCTURE
- REMOVE DOOR AND FRAME
- REMOVE EXISTING GATE
- REMOVE WINDOW AND FRAME, PREPARE OPENING FOR NEW BRICK INFILL TO MATCH ADJACENT BRICK
- REMOVE FOLDING PANEL PARTITION
- OPENINGS TO BE INFILLED
- REMOVE VENT AND PREP FOR BRICK INFILL
- REMOVE EXISTING STAIR STRUCTURE COMPLETE
- REMOVE EXISTING PLUMBING FIXTURES
- REMOVE EXISTING TOILET PARTITIONS AND ASSOCIATED HARDWARE
- REMOVE ALL EXISTING BUILT-IN CASEWORK IN THE ROOM.

	ISSUED FOR BID	08/23/
NO.	REVISION	DAT

AREA C, AREA B, AREA A

KEY PLAN

NORTH NO SCALE

WTA ARCHITECTS

100 S Jefferson Ave, Suite 601  
Saginaw, Michigan 48607  
989 752 8107

WTAARCH.COM

COPYRIGHT © 2023

PROJECT TITLE  
RENOVATION AND  
ADDITION:  
MIDLAND COUNTY ESA

MIDLAND, MICHIGAN

SHEET TITLE  
DEMOLITION PLAN -  
AREA A - UPPER LEVEL 2

PROJECT NUMBER 2022006.1	SHEET NUMBER
PROJECT DATE AUGUST 23, 2023	AD2.03
CHECKED BY JMJ	

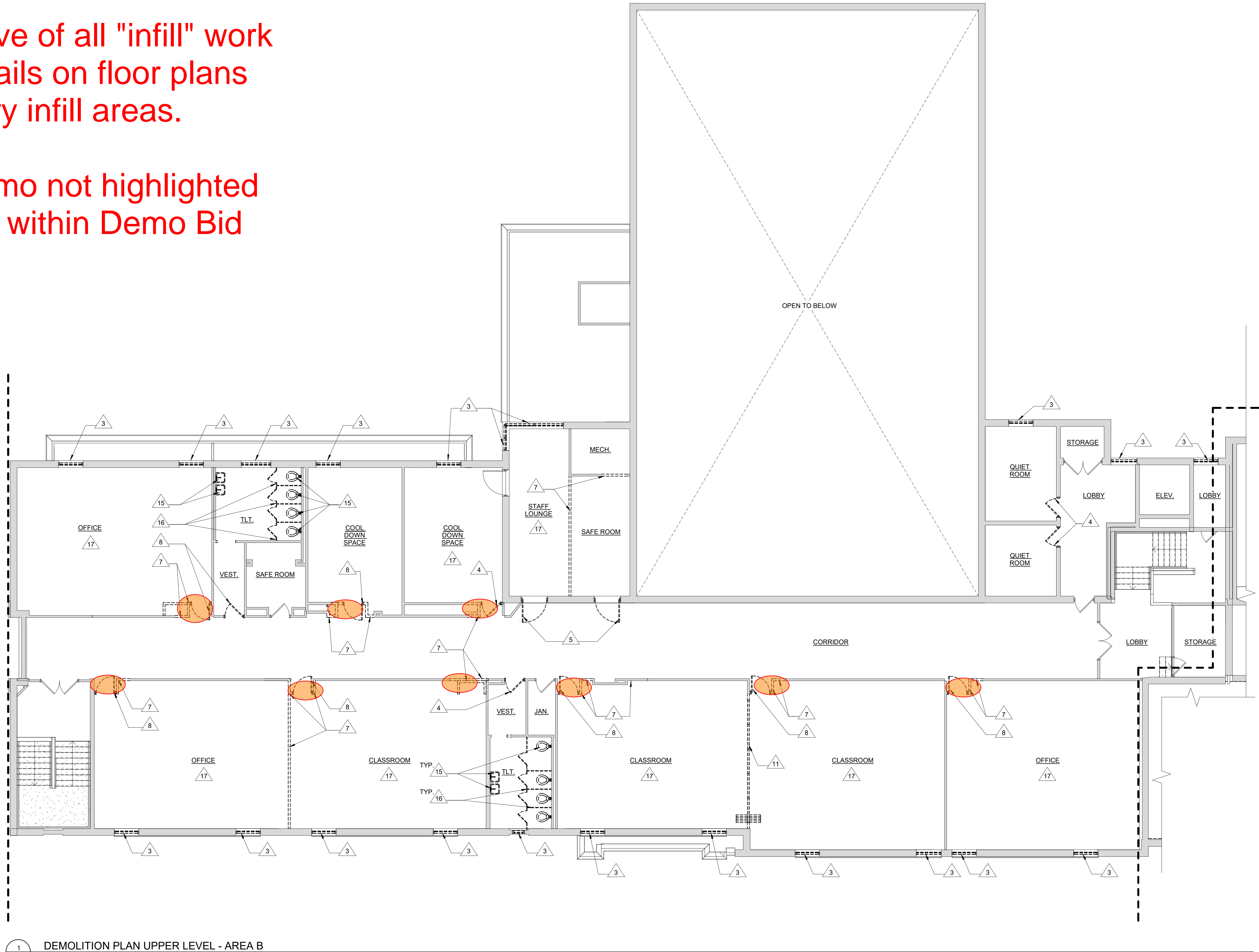


Masonry Demo clarification Reference only

Highlighted areas to be included by Masonry package for interior demo/toothing.

Not representative of all "infill" work , review wall details on floor plans for other masonry infill areas.

All other wall demo not highlighted is to be included within Demo Bid Package.



1 DEMOLITION PLAN UPPER LEVEL - AREA B  
AD2.04 SCALE: 1/8" = 1'-0"

DEMOLITION LEGEND:

- DEMOLITION
- EXISTING TO REMAIN
- PORTIONS OF EXISTING BUILDING TO BE DEMOLISHED - REFER TO PHASING PLAN FOR SCOPE OF DEMOLITION AT EACH PHASE
- PORTION OF SLAB AND FLOOR FRAMING TO BE REMOVED FOR NEW WORK - REFER TO STRUCTURAL DRAWINGS FOR ADDITIONAL INFORMATION

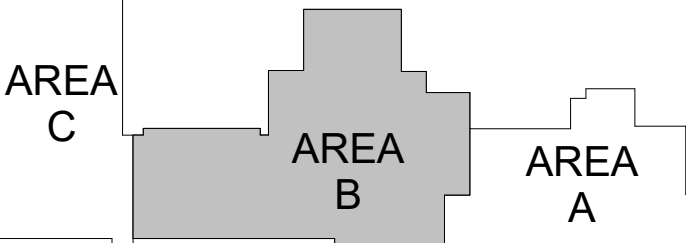
DEMOLITION GENERAL NOTES:

- ELEMENTS OR PORTIONS OF ELEMENTS TO BE REMOVED ARE SHOWN DASHED, REFER TO KEY NOTES FOR ADDITIONAL CLARIFICATION.
- VERIFY EXISTING CONDITIONS OF SPACE PRIOR TO DEMOLITION WORK.
- AREAS OF DEMOLITION ARE APPROXIMATE; GENERAL CONTRACTOR TO COORDINATE DEMOLITION WITH EXISTING CONDITIONS, NEW CONSTRUCTION, AND ADDITIONAL SCOPE OF WORK INCLUDED IN MECHANICAL, PLUMBING, AND ELECTRICAL DOCUMENTS.
- WALL DEMOLITION TO INCLUDE FRAMING, SHEATHING, FINISHES AND ALL ASSOCIATED COMPONENTS
- ANY HIDDEN STRUCTURAL COLUMNS OR SUPPORT TO BE BROUGHT TO THE ATTENTION OF THE ARCHITECT PRIOR TO REMOVAL. ANY BUILDING SUPPORT WHICH DEVIATES FROM THAT SHOWN OR IS IN QUESTION TO BE BROUGHT TO ARCHITECT'S ATTENTION IMMEDIATELY.
- SEE MECHANICAL, PLUMBING, AND ELECTRICAL DOCUMENTS FOR REMOVAL AND CAPPING OF SERVICES FOR ITEMS SHOWN TO BE REMOVED.

DEMOLITION KEYNOTES

- REMOVE CEILING AND PREP FOR NEW CEILING
- EXISTING SERVER TO BE RELOCATED, RE: ELECTRICAL
- REMOVE WINDOW AND FRAME, PREPARE OPENING TO RECEIVE NEW WINDOW
- REMOVE DOOR AND FRAME, PREPARE OPENING FOR NEW DOOR AND FRAME
- REMOVE DOOR AND FRAME, PREPARE OPENING FOR BRICK INFILL
- REMOVE PORTION OF EXISTING WALL FOR NEW OPENING OR DOOR AS SCHEDULED, RE: STRUCTURAL
- REMOVE EXISTING WALL CONSTRUCTION FROM FINISH FLOOR TO BOTTOM OF STRUCTURE
- REMOVE DOOR AND FRAME
- REMOVE EXISTING GATE
- REMOVE WINDOW AND FRAME, PREPARE OPENING FOR NEW BRICK INFILL TO MATCH ADJACENT BRICK
- REMOVE FOLDING PANEL PARTITION
- OPENINGS TO BE INFILLED
- REMOVE VENT AND PREP FOR BRICK INFILL
- REMOVE EXISTING STAIR STRUCTURE COMPLETE
- REMOVE EXISTING PLUMBING FIXTURES
- REMOVE EXISTING TOILET PARTITIONS AND ASSOCIATED HARDWARE
- REMOVE ALL EXISTING BUILT-IN CASEWORK IN THE ROOM.

	ISSUED FOR BID	08/23/
NO.	REVISION	DAT



KEY PLAN  
NORTH NO SCALE

WTA ARCHITECTS  
100 S Jefferson Ave, Suite 601  
Saginaw, Michigan 48607  
989 752 8107  
COPYRIGHT © 2023

PROJECT TITLE  
RENOVATION AND  
ADDITION:  
MIDLAND COUNTY ESA

MIDLAND, MICHIGAN

SHEET TITLE  
DEMOLITION PLAN -  
AREA B - UPPER LEVEL 3

PROJECT NUMBER 2022006.1	SHEET NUMBER
PROJECT DATE AUGUST 23, 2023	AD2.04
CHECKED BY JMJ	